

# Application

Note  
29

## Purge Trap for GC Analyses of Volatile Aromatic (BTEX) Compounds in Soils and Sediments

The BTEXTRAP purge trap was designed specifically for monitoring benzene, toluene, ethylbenzene, and the xylene isomers (BTEX compounds). The trap allows large amounts of methanol (used in the US EPA Method 5030 procedure for preparing soil and sediment samples) to pass through the adsorbent beds while retaining the analytes of interest. In evaluations of trap performance, relative analyte recovery was consistent for samples containing a low level and a high level of added methanol. (ChromFax No.: 394029)

### Key Words:

- BTEX compounds • volatile organic compounds
- purge and trap • soil analyses • sediment analyses

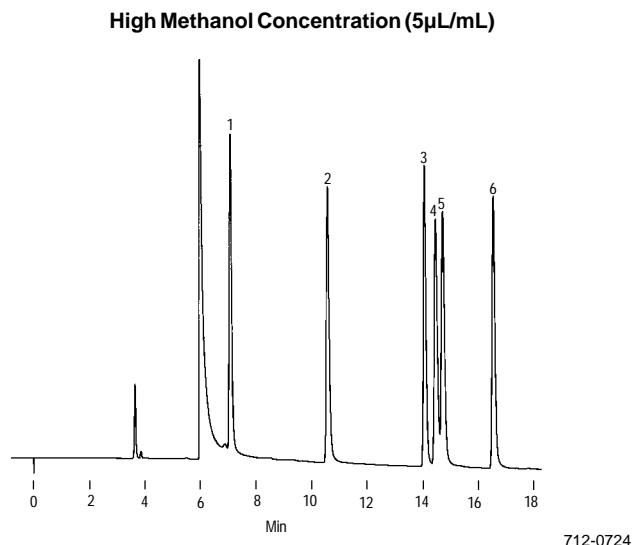
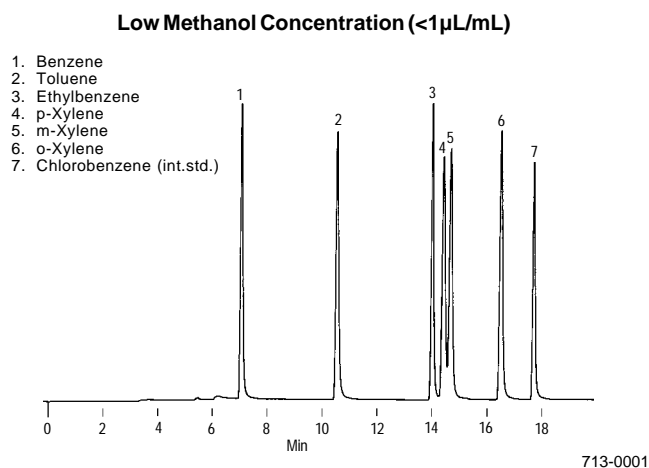
Analysts who monitor hazardous waste sites for volatile organic compounds (VOCs) under the requirements of the Resource Conservation and Recovery Act Method SW-846 must concentrate their samples prior to chromatographic analysis. Purge and trap is a widely used preparative procedure for the extraction and concentration of VOCs, including benzene, toluene, ethylbenzene and xylene (BTEX), in soil, sediment, and water matrices. For solid wastes, such as soils and sediments, the purge and trap method (US EPA Method 5030) requires that a portion of the sample be dispersed in methanol to dissolve the volatile organic constituents (1). The methanolic solution is diluted with water in a specially designed purging chamber, to obtain estimated analyte concentrations within 10 to 200ppb. It is then analyzed by purge-and-trap GC following the normal method for water — volatile compounds are purged from the water sample, trapped on an adsorbent trap, and delivered to the gas chromatographic column by thermal desorption.

This preparative method results in a large methanol concentration which is then purged with the analytes. If retained by the purge trap, the methanol will create a huge solvent peak that will interfere with the chromatographic analysis of benzene. This is especially evident when using a capillary column designed to separate the para- and meta-xylene isomers, and an FID detector. However, large volumes of methanol can also quench the signal of a PID detector.

The BTEXTRAP™ purge trap was developed specifically for monitoring benzene, toluene, ethylbenzene, and the xylene isomers. This unique purge trap allows large volumes of methanol to pass through the adsorbent beds during the purging process, while retaining the analytes of interest, making it ideal for monitoring these compounds in soil and sediment matrices.

Figure A. Volatile Aromatic Compounds Collected on a BTEXTRAP Purge Trap

Sample: A1 - 5mL, 10ng/mL each analyte  
A2 - 25µL methanol added  
Trap: BTEXTRAP  
Purge: 11 min  
Dry Purge: 5 min  
Purge Flow Rate: 40mL/min  
Desorb.: 260°C/6 min  
Bake: 270°C/4 min  
Column: SUPELCOWAX 10, 60m x 0.75mm ID, 1.0µm film  
Cat. No.: 23723  
Oven: 50°C (8 min) to 100°C at 4°C/min  
Carrier: helium, 10mL/min  
Det.: FID



The BTEXTRAP bed structure was designed for optimum performance under the standard operating parameters specified in many VOC purge and trap methods. These methods typically specify a sample volume of 5mL, a purge time of 11 minutes, and purge flow rates of 25 to 40mL/min. We limited drying time to 5 minutes to reduce analysis time. This drying time provides added removal of methanol after the purge is complete. Because the Carboxen™ adsorbents used are hydrophobic, water retention is not a concern.

A 30mg bed of Carboxen B is sufficient to fully retain benzene in the 11 minute purge and 5 minute dry times, yet does not retain significant amounts of methanol. A 300mg bed of Carboxen C is required to fully retain the other, larger compounds without allowing them to break through to the Carboxen B bed. The Carboxen C bed also prevents high molecular weight contaminants from being adsorbed on the Carboxen B bed. (For monitoring compounds more volatile than benzene, we recommend our VOCARB 3000 and VOCARB 4000 traps, which include an additional adsorbent, Carboxen™ -1000). The thermal stability of these advanced materials allows the use of higher temperatures in the desorption and baking cycles, for better focusing of analytes and elimination of analyte carryover to subsequent analyses.

Performance of the BTEXTRAP purge trap was evaluated using a mixture of volatile aromatic compounds containing methanol in low (<1µL/mL water) and high (5µL/mL water) concentrations (Figure A). We obtained excellent resolution of benzene, toluene, ethylbenzene and the xylene isomers with minimal solvent interference.

Three analyses were made at five analyte concentrations (Tables 1 and 2). The elevated methanol level had minimal effect on relative analyte recovery (RR) and relative standard deviation (RSD). Correlation coefficients, calculated from the average (three analyses) of the raw area counts at each level for the two methanol levels were, in all cases, greater than 0.9992, indicating that the higher methanol concentration did not appreciably affect linearity.

The BTEXTRAP purge trap is very effective in purge and trap analyses of BTEX compounds. It offers reproducible results and excellent linearity over a wide calibration range. Because its performance is not affected by high methanol concentrations, the BTEXTRAP is ideal for monitoring volatile aromatic compounds in soil in sediment matrices where methanol extraction is required.

## Ordering Information:

### BTEXTRAP Purge Traps

Instrument	Cat. No.
CDS Peakmaster	21158
Dynatech® "Dyna" models	21084
O.I. Analytical 4460	21145
O.I. Analytical 4560	24939
Tekmar® LSC-1, LSC-2, LSC-2000, 4000	21064
Tekmar 3000	24919

All traps constructed of 1/8" OD stainless steel and accurately produced to instrument manufacturer's specifications. Thermocouple included on Dynatech and O.I. Analytical traps.

### SUPELCOWAX™ 10 Borosilicate Glass Capillary Column

60m x 0.75mm ID, 1.0µm film **23723**

**BTEX Mix** 1mL **48026**

200µg/mL each component in methanol.

Benzene	Toluene	o-Xylene
Ethylbenzene	m-Xylene	p-Xylene

**Table 1. Reproducibility (%RSD) for Low Methanol Concentration (<1µL/mL)**

Compound	Analyte Concentration				
	1 ng/mL	5 ng/mL	10 ng/mL	50 ng/mL	100 ng/mL
Benzene	2.39	1.65	0.86	0.27	0.66
Toluene	0.33	2.36	0.78	1.08	0.85
Ethylbenzene	0.74	1.47	0.92	0.36	1.75
p-Xylene	0.47	1.69	1.24	0.28	1.29
m-Xylene	0.60	1.64	1.15	0.25	1.19
o-Xylene	0.51	0.96	1.79	0.20	0.73

Mean recovery normalized to chlorobenzene internal standard at same concentration (n=3 runs).

**Table 2. Reproducibility (%RSD) for High Methanol Concentration (5µL/mL)**

Compound	Analyte Concentration				
	1 ng/mL	5 ng/mL	10 ng/mL	50 ng/mL	100 ng/mL
Benzene	4.29	0.27	1.84	0.49	0.45
Toluene	2.77	1.06	1.37	0.33	0.14
Ethylbenzene	2.23	1.11	0.90	0.22	0.07
p-Xylene	2.58	0.87	1.44	0.29	0.12
m-Xylene	1.34	0.51	1.16	0.27	0.08
o-Xylene	1.30	0.70	2.06	0.30	0.07

Mean recovery normalized to chlorobenzene internal standard at same concentration (n=3 runs).

### Reference

1. Solid Waste Methods SW 846 — Purge and Trap (5030A). Available from National Technical Information Service, 5285 Port Royal Road, Springfield, VA 22161 USA, 703-487-4780.

### Trademarks

BTEXTRAP, Carboxen, Carboxen, SUPELCOWAX — Supelco, Inc.  
 Dynatech — Dynatech Precision Sampling Corp.  
 Tekmar — Tekmar Co.

Contact our Technical Service Department (phone 800-359-3041 or 814-359-3041, FAX 814-359-5468) for expert answers to your questions.

Note 29

For more information, or current prices, contact your nearest Supelco subsidiary listed below. To obtain further contact information, visit our website ([www.sigma-aldrich.com](http://www.sigma-aldrich.com)), see the Supelco catalog, or contact Supelco, Bellefonte, PA 16823-0048 USA.

ARGENTINA · Sigma-Aldrich de Argentina, S.A. · Buenos Aires 1119 AUSTRALIA · Sigma-Aldrich Pty. Ltd. · Castle Hill NSW 2154 AUSTRIA · Sigma-Aldrich Handels GmbH · A-1110 Wien  
 BELGIUM · Sigma-Aldrich N.V./S.A. · B-2880 Bornem BRAZIL · Sigma-Aldrich Química Brasil Ltda. · 01239-010 São Paulo, SP CANADA · Sigma-Aldrich Canada, Ltd. · 2149 Winston Park Dr., Oakville, ON L6H 6J8  
 CZECH REPUBLIC · Sigma-Aldrich s.r.o. · 186 00 Praha 8 DENMARK · Sigma-Aldrich Denmark A/S · DK-2665 Vallensbaek Strand FINLAND · Sigma-Aldrich Finland/YA-Kemia Oy · FIN-00700 Helsinki  
 FRANCE · Sigma-Aldrich Chimie · 38297 Saint-Quentin-Fallavier Cedex GERMANY · Sigma-Aldrich Chemie GmbH · D-82041 Deisenhofen GREECE · Sigma-Aldrich (o.m.) Ltd. · Ilioupoli 16346, Athens  
 HUNGARY · Sigma-Aldrich Kft. · H-1067 Budapest INDIA · Sigma-Aldrich Co. · Bangalore 560 048 IRELAND · Sigma-Aldrich Ireland Ltd. · Dublin 24 ISRAEL · Sigma Israel Chemicals Ltd. · Rehovot 76100  
 ITALY · Sigma-Aldrich s.r.l. · 20151 Milano JAPAN · Sigma-Aldrich Japan K.K. · Chuo-ku, Tokyo 103 KOREA · Sigma-Aldrich Korea · Seoul MALAYSIA · Sigma-Aldrich (M) Sdn. Bhd. · Selangor  
 MEXICO · Sigma-Aldrich Química S.A. de C.V. · 50200 Toluca NETHERLANDS · Sigma-Aldrich Chemie BV · 3330 AA Zwijndrecht NORWAY · Sigma-Aldrich Norway · Torshov · N-0401 Oslo  
 POLAND · Sigma-Aldrich Sp. z o.o. · 61-663 Poznań PORTUGAL · Sigma-Aldrich Química, S.A. · Sintra 2710 RUSSIA · Sigma-Aldrich Russia · Moscow 103062 SINGAPORE · Sigma-Aldrich Pte. Ltd.  
 SOUTH AFRICA · Sigma-Aldrich (pty) Ltd. · Jet Park 1459 SPAIN · Sigma-Aldrich Química, S.A. · 28100 Alcobendas, Madrid SWEDEN · Sigma-Aldrich Sweden AB · 135 70 Stockholm  
 SVITZERLAND · Supelco · CH-9471 Buchs UNITED KINGDOM · Sigma-Aldrich Company Ltd. · Poole, Dorset BH12 4QH  
 UNITED STATES · Supelco · Supelco Park · Bellefonte, PA 16823-0048 · Phone 800-247-6628 or 814-359-3441 · Fax 800-447-3044 or 814-359-3044 · email: [supelco@sial.com](mailto:supelco@sial.com)

H

Supelco is a member of the Sigma-Aldrich family. Supelco products are sold through Sigma-Aldrich, Inc. Sigma-Aldrich warrants that its products conform to the information contained in this and other Sigma-Aldrich publications. Purchaser must determine the suitability of the product for a particular use. Additional terms and conditions may apply. Please see the reverse side of the invoice or packing slip.