



## APPLICATION NOTE

### Gas Chromatography/ Mass Spectrometry

#### Authors

Lee Marotta  
Sr. Field Application Scientist

Andrew Tipler  
Senior Scientist

PerkinElmer, Inc.  
Shelton, CT 06484 USA

## Monitoring Volatile Organic Compounds in Beer Production Using the Clarus SQ 8 GC/MS and TurboMatrix Headspace Trap Systems

### Introduction

Beer is a popular beverage produced by the fermentation of hopped malt extracted from barley and other grains. Although simple in concept, beer is a highly complex mixture of many compounds including sugars, proteins, alcohols, esters, acids, ketones, acids and terpenes. Flavor is an important quality of any beer and the chemical content of the beer is obviously responsible for that flavor. Aroma is an extremely important part of the flavor and so there is a strong interest by brewers in the volatile organic compounds (VOCs) in beer that affect its aroma.

Some VOCs have a positive effect on aroma (attributes) and some have a negative effect (defects). The ability to characterize these in beer products before, during and after fermentation would be an important tool in process control, quality assurance and product development.

This application note describes a system comprising a headspace trap sampler to extract and concentrate VOCs from a beer sample and deliver them to a gas chromatograph/mass spectrometer (GC/MS) for separation, identification and quantification.

The purpose of our experiments is to demonstrate that attributes and defects can all be monitored using one detector and from a single injection with mass spectrometry (MS). The associated benefits include a quicker return on investment, enhanced productivity, more information from a single analysis, and less bench space requirements.

## Instrumentation

In this analysis, we utilized a headspace trap system for sample introduction to characterize the flavor of beer. This technique ensures that non-volatile material in beer does not enter the analytical system, which can cause system contamination. The headspace trap extracts the volatile components from a large sample and focuses them onto an inline adsorbent trap. It also facilitates very easy sample preparation – a volume of beer is dispensed into a vial and sealed. The subsequent analysis is then fully automated.

A PerkinElmer® TurboMatrix™ Headspace Trap connected to a PerkinElmer Clarus® SQ 8 GC/MS was used for these experiments. Using a headspace trap instead of the classical headspace technique enables up to 100 times improved detection limits over classical headspace methods.

A slightly-polar 60 m x 0.25 mm x 1.0 µm Elite 5 (5% phenyl-silicone) column was used. This thick-film column provided sufficient retention to separate the early-eluting most volatile components and provided the dynamic range necessary to chromatograph both high level and low level components in the beer.

## Experimental

### Overview

Several experiments were performed that are key to the brewing industry:

- Quantitation of dimethyl sulfide (DMS), 2,3-butanedione (diacetyl), 2,3-pentandione and t-2-nonanal.
- Characterization of several types of beers
- Fermentation profiling
- Analysis of raw materials
- Aging studies

### Analytical Method

The experimental conditions for this analysis are given in Tables 1 to 4.

**Table 1. HS Trap Conditions.**

Headspace System	TurboMatrix (40 or 110) HS Trap
Vial Equilibration	80 °C for 20 min
Needle	120 °C
Transfer Line	140 °C, long, 0.25 mm i.d. fused silica
Carrier Gas	Helium at 31 psig
Dry Purge	7 min
Trap	Air Toxics, 25 °C to 260 °C, hold for 7 min
Extraction Cycles	1 with 40 psig extraction pressure

**Table 2. GC Conditions.**

Gas Chromatograph/ Mass Spectrometer	Clarus SQ 8
Column	60 m x 0.25 mm x 1.0 µm Elite-5MS
Oven	35 °C for 5 min, then 6 °C/min to 245°
Injector	Programmable Split Splitless (PSS), 180 °C, Split OFF
Carrier Gas	Helium at 2.0 mL/min (28.6 psig initial pressure), HS Mode ON

**Table 3. MS Conditions.**

Scan Range	35 to 350 Daltons
Scan Time	0.1 s
Interscan Delay	0.06 s
Source Temp	180 °C
Inlet Line temp	200 °C
Multiplier	1700V

**Table 4. Sample Details.**

Sample preparation	5 mL of each sample was pipetted into a sample vial and sealed
Vial	Standard 22-mL vial with aluminum crimped cap with PTFE lined silicone septum

### Calibration

A 10-point calibration was prepared for four target 'defect' compounds. The detection limit goal was 5.0 parts per billion (ng/mL). The standards were acquired in simultaneous Full Scan and Single Ion Monitoring acquisitions (SIFI). Examples of the chromatographic peaks and their signal to noise ratios at the 5.0 ppb level are given in Figures 1 to 4.

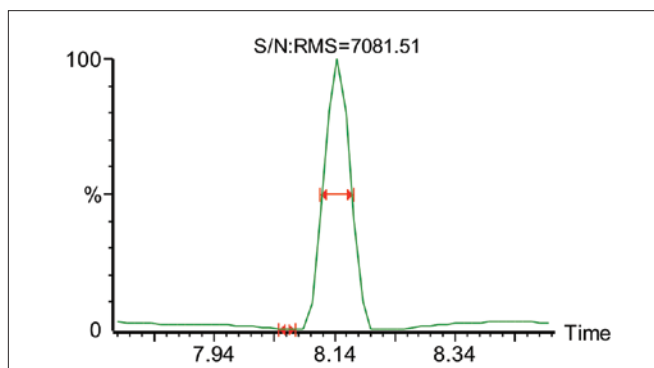


Figure 1. SIM chromatogram of dimethyl sulfide peak at 5.0 ppb.

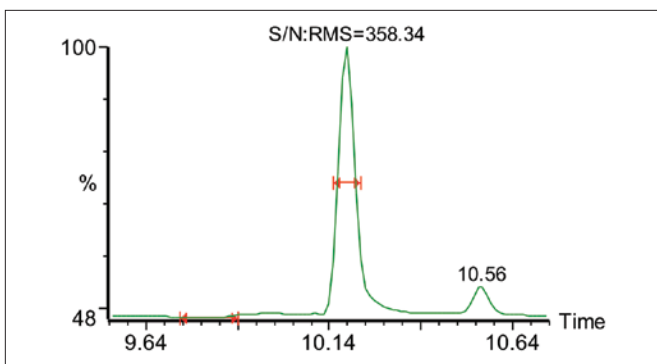


Figure 2. SIM chromatogram of 2,3-butanedione peak at 5.0 ppb.

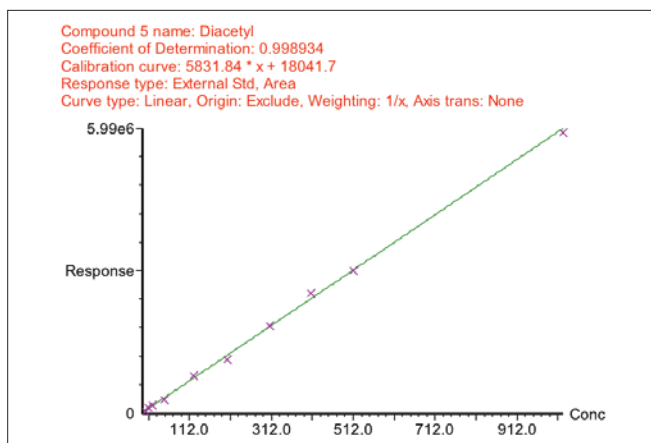


Figure 5. Calibration profile for 2,3-butanedione (diacetyl).

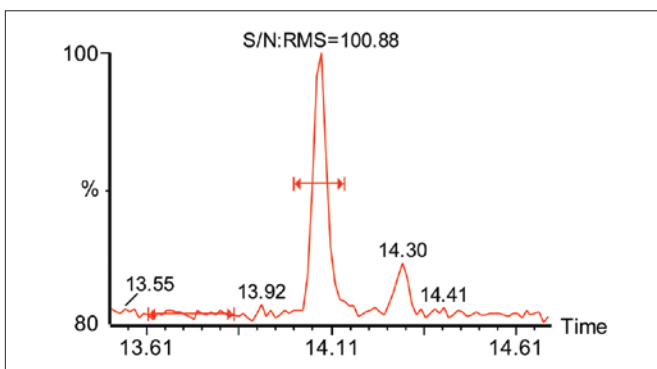


Figure 3. SIM chromatogram of 2,3-pentanedione peak at 5.0 ppb.

The calibration results are presented in Table 5. An example of one of the calibration plots is given in Figure 5. These data demonstrate a good linear response for these components in at low levels in a highly complex matrix.

### Characterization of Beer

The MS detector enables the identification of components in beer. Figure 6 is an example of such characterization that was analyzed in our research center in Shelton, CT. Figure 7 is a comparison of the component identities and responses found in two competitive products.

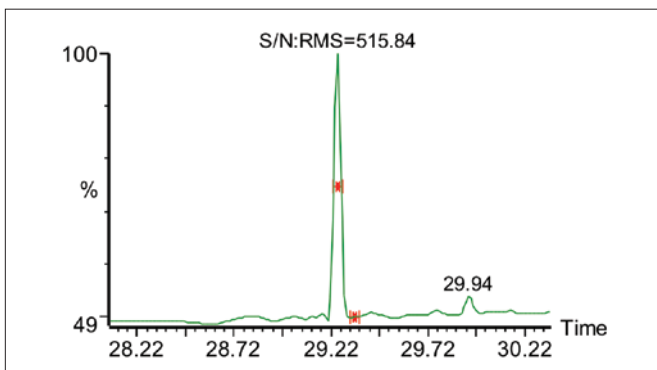


Figure 4. SIM chromatogram of t-2-nonenal peak at 5.0 ppb.

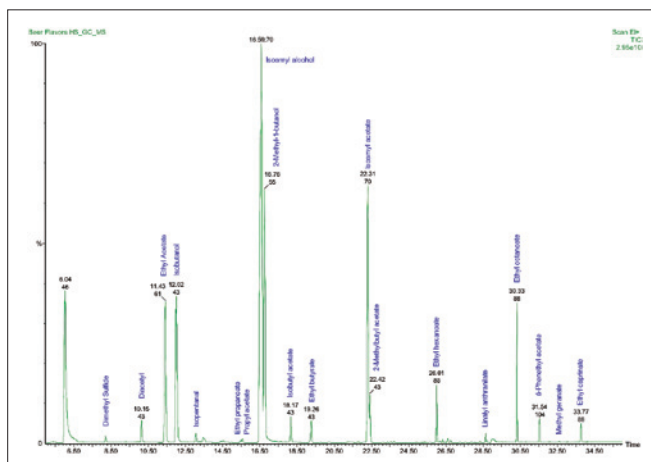


Figure 6. Typical chromatographic profile of volatile flavor compounds in an American pale ale.

Table 5. Calibration Data.

Component Name	Signal to Noise Ratio Ratio at 5 ng/mL	r <sup>2</sup> over range 5 to 1000 ng/mL	Signal to Noise Ratio Ratio at 5 ng/mL	r <sup>2</sup> over range 5 to 1000 ng/mL
Dimethyl Sulfide	821 to 1	0.9934	7081 to 1	0.9945*
2,3-Butanedione	12 to 1	0.9989	358 to 1	0.9943
2,3-Pentanedione	20 to 1	0.9975	470 to 1	0.9983
t-2-Nonenal	19 to 1	0.9958	516 to 1	0.9960

\*Reduced range due to overloading.

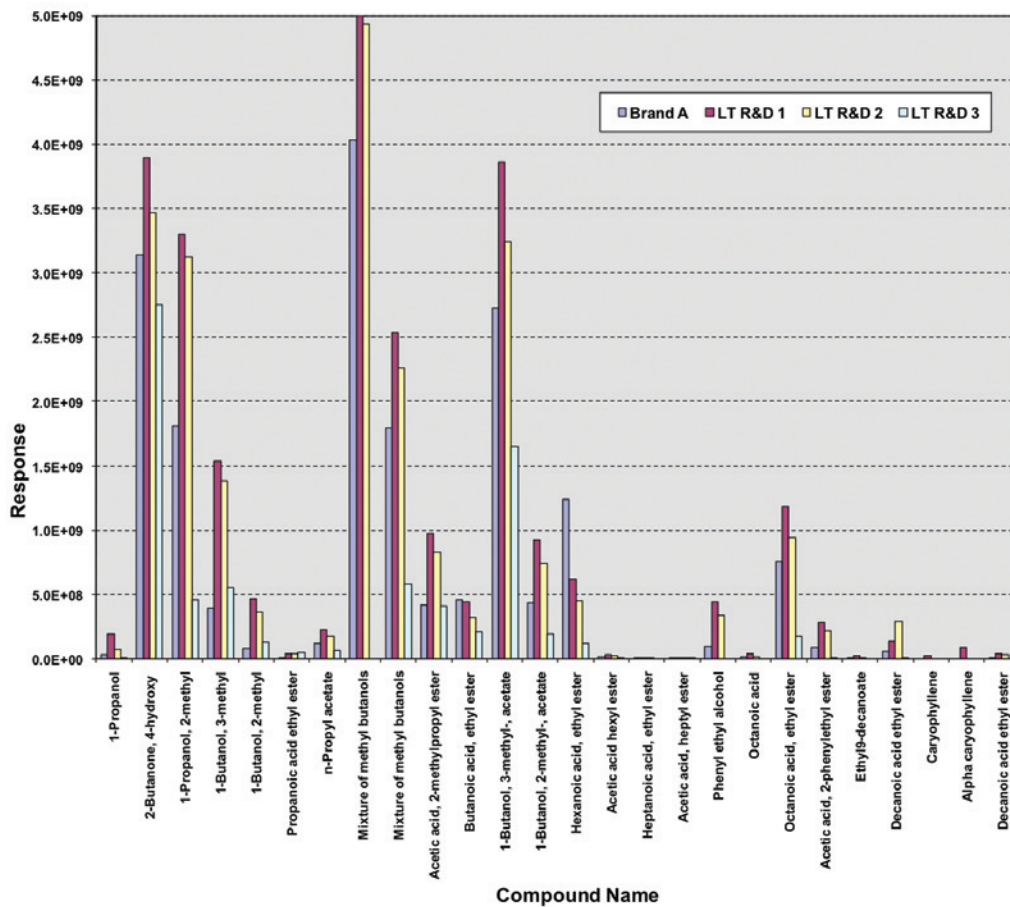


Figure 7. Comparison between two brands of beer (data courtesy of the Long Trail Brewing Company, Bridgewater Corners, Vermont).

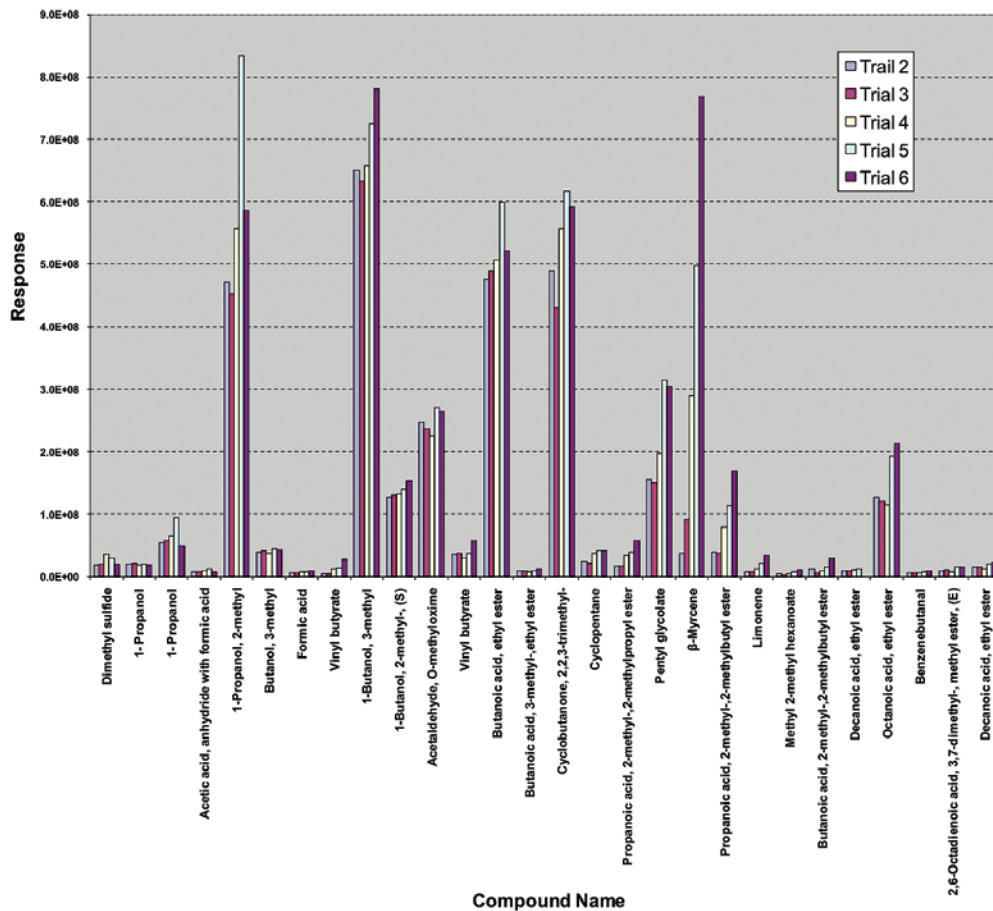


Figure 8. Comparison between different fermentations of the same beer type (data courtesy of the Long Trail Brewing Company, Bridgewater Corners, Vermont).



Figure 8 shows the results of a research study comparing the flavor profiles of a beer from five different fermentations.

### Fermentation Process

This analyzer provides the ability to obtain analytical results during the fermentation process.

An experimental batch of American pale ale was brewed and fermentation initiated. A sample was analyzed every eight hours starting with time zero and completing on day eight.

Specific gravity is often used as an indicator of the fermentation progress and is shown for this beer in Figure 9. The final gravity of 1.012 was achieved in about 100 hours.

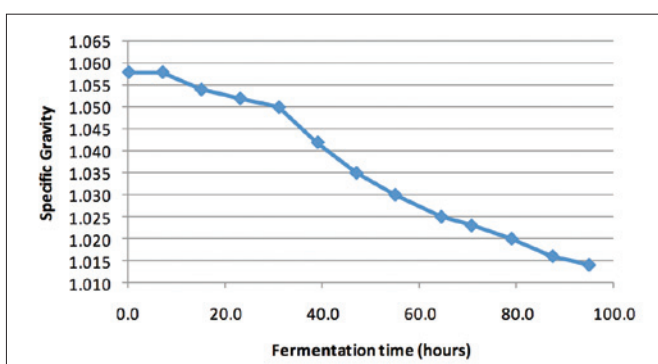


Figure 9. Specific gravity profile for the experimental beer during the fermentation process.

The concentrations of key components in the beer were checked during the fermentation process. The profiles of two key 'defects', 2,3-butanedione and dimethyl sulfide are shown in Figures 10 and 11 respectively. Trans-2-nonenal was not detected.

### Analysis of Raw Materials

Figure 12 displays the results of a study comparing the components of different hops in order to understand and to improve the taste of beer.

Some beers use adjuncts to impact special flavors. The same system may be used to characterize these. Figure 13 displays the results of a comparison between orange peel from different suppliers for use in Belgian-style beers.

### Aging Studies

Beer is a very complex matrix that ages over time due to chemical and biological activity so storage conditions are critical to its quality.

Exposure to air promotes the formation of aldehydes and other undesirable compounds that can impair the flavor of a good beer. The Clarus system is capable of monitoring such compounds. A compound of major concern is t-2-nonenal ('wet cardboard' flavor), which we monitored during the fermentation studies, yet was undetected.

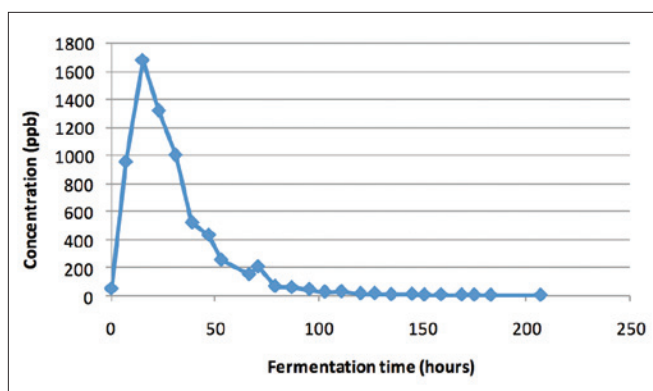


Figure 10. Concentration profile of 2,3-butanedione for the experimental beer during the fermentation process.

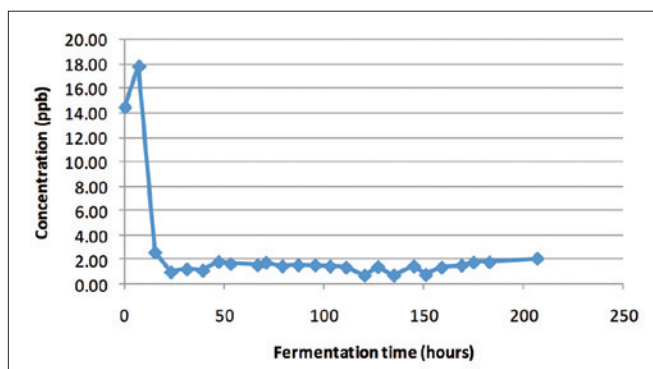


Figure 11. Concentration profile of dimethyl sulfide for the experimental beer during the fermentation process.

Another flavor concern is that bittering components (isohumulones) react to light and produce mercaptans and other volatile sulfur compounds giving a 'skunky' flavor to the beer. Figure 14 shows chromatograms of the same beer kept in the dark and also in bright sunlight. Major differences in the composition of the beer VOCs are apparent. Figure 15 identifies one of the sun-stuck components as an olefinic thiophene

### Conclusion

The combination of the TurboMatrix HS Trap extraction technology with the state of the art Clarus SQ 8 GC/MS is a very powerful, yet easy to use tool for investigating many aspects of the beer production process. Virtually anything that is volatile and organic can be monitored in beer using a single column and applied conditions. The system may be deployed for checking raw materials, monitoring fermentation, quality control testing of a final product, product development, aging studies and trouble shooting.

Traditionally, this work would have been performed by skilled tasters, which of course continues to be an important part of any brewing process. The opportunity to compliment taste and olfactory determinations with hard objective analytical data can only enhance the art of making quality beer.

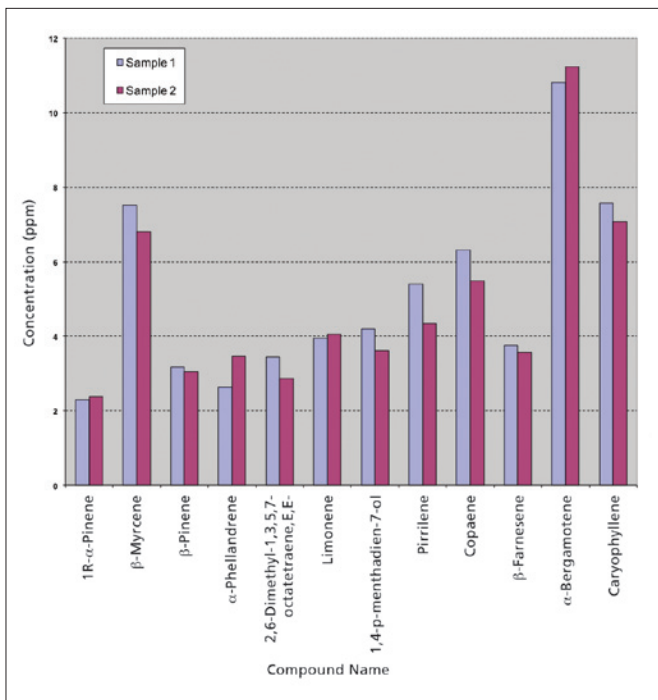


Figure 12. Hop VOC profiles (data courtesy of the Long Trail Brewing Company, Bridgewater Corners, Vermont).

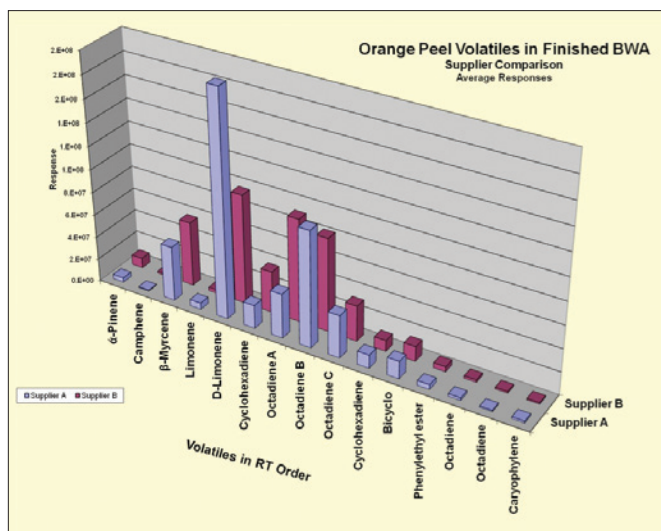


Figure 13. Flavor profiles in orange peel (data courtesy of the Long Trail Brewing Company, Bridgewater Corners, Vermont).

In this note, we have conducted many of the critical analyses relevant to beer brewing. We have shown good performance in determining levels of defects such as diacetyl and dimethyl sulfide. We have identified flavor components in the beer, hops and adjuncts.

All this is possible on a system that simply requires the beer to be sealed in a vial and placed on an autosampler tray. The system does the rest.

### Acknowledgement

We thank Bill Yawney, the QC Manager, from Long Trail Brewing Company for allowing us to use some of his data in this application note. In addition, Bill provided us with valuable expert advice on the brewing process and the analysis of beer.

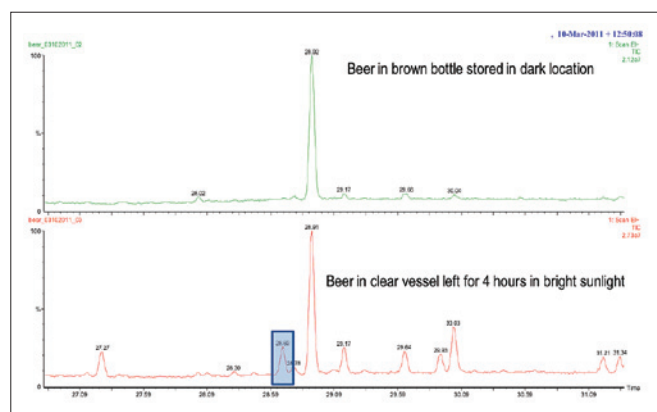


Figure 14. Effect of sunlight on beer volatiles.

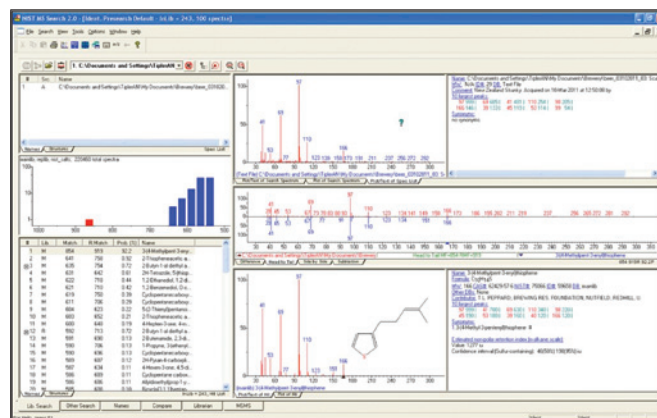


Figure 15. Library search on spectrum obtained from the peak highlighted in Figure 14.