

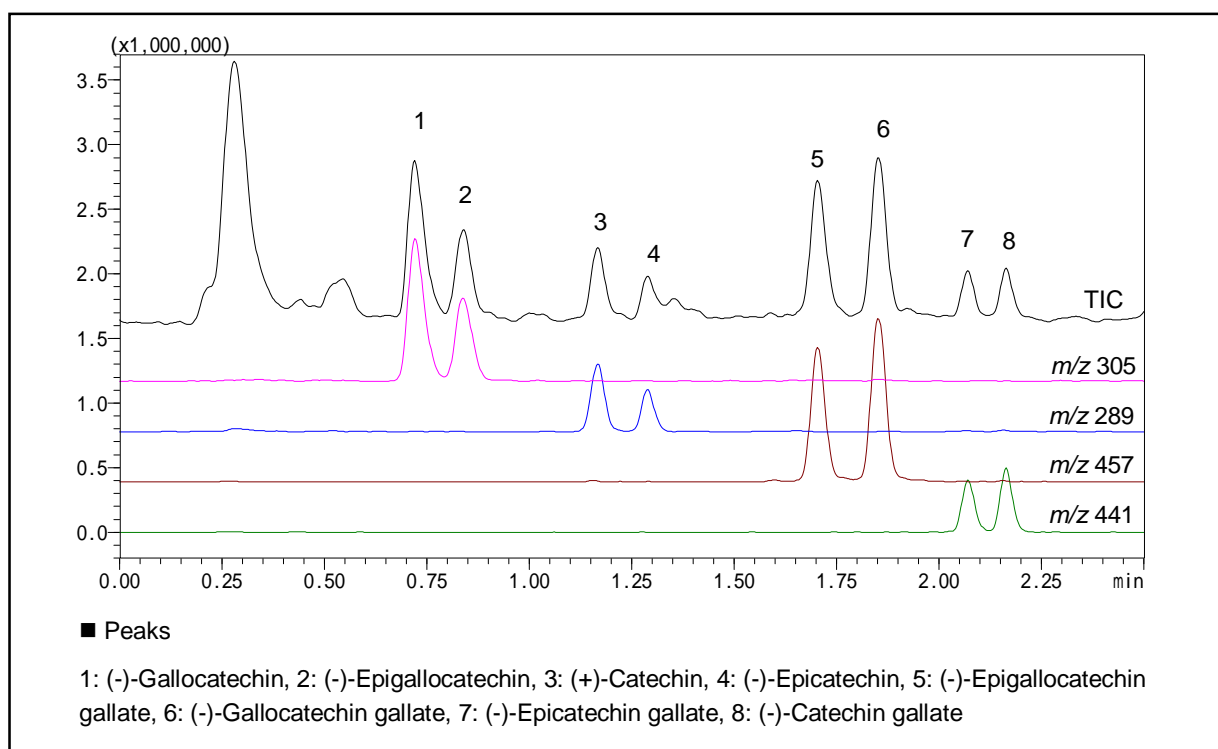
Application Data Sheet

High Performance Liquid Chromatography

No. 26

High-Speed Analysis of Catechins

Recently, polyphenol found in foods has received increased attention, and we used an LCMS to conduct the analysis of 8 types of catechins found in green tea. These catechins were detected as deprotonated molecules.



Analysis of Catechins in Green Tea

[Sample Preparation]

Green tea was filtered through a 0.45 μm membrane filter.

Analytical Conditions

Instrument	: Prominence UFLC system + LCMS-2010EV
Column	: Shim-pack XR-ODS (50 mm x 2.0 mm <i>i.d.</i>)
Mobile Phase	: A) 0.1% Formic acid / Tetrahydrofuran = 95 / 5 (v / v) B) Acetonitrile B.conc; 3% to 35% (0 to 2.5 min)
Flow Rate	: 0.5 mL/min
Column Temperature	: 50 °C
Detection	: MS; ESI-Negative, Scan
Sample Volume	: 1 μL