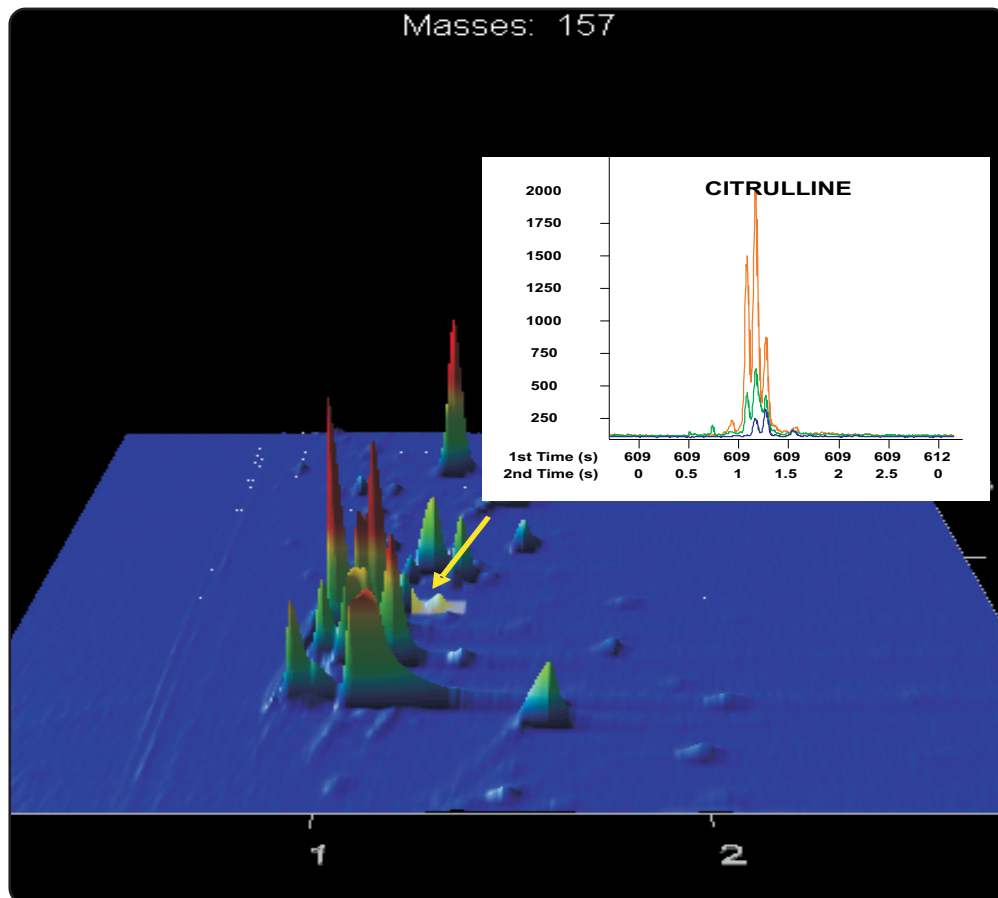


GCxGC-TOFMS of TMS Derivatized Blood Analysis Showing Trace Level of Citrulline

Life Science and Chemical Analysis Centre
LECO Corporation, Saint Joseph, Michigan USA

Application Snapshot



GCxGC-TOFMS analysis of blood plasma sample with clear separation and identification of trace concentration of Citrulline an α -amino acid.

Columns:

30 m x 0.25 mm x 0.25 μ m Rtx-1ms
1.3 m x 0.10 mm x 0.10 μ m BPX-50

TOFMS:

45 to 750 m/z @ 200 spectra/s

For questions on this analysis
e-mail us at: life_science@leco.com

For a complete listing of snapshots
and application notes visit us on the
web at www.leco.com



LECO