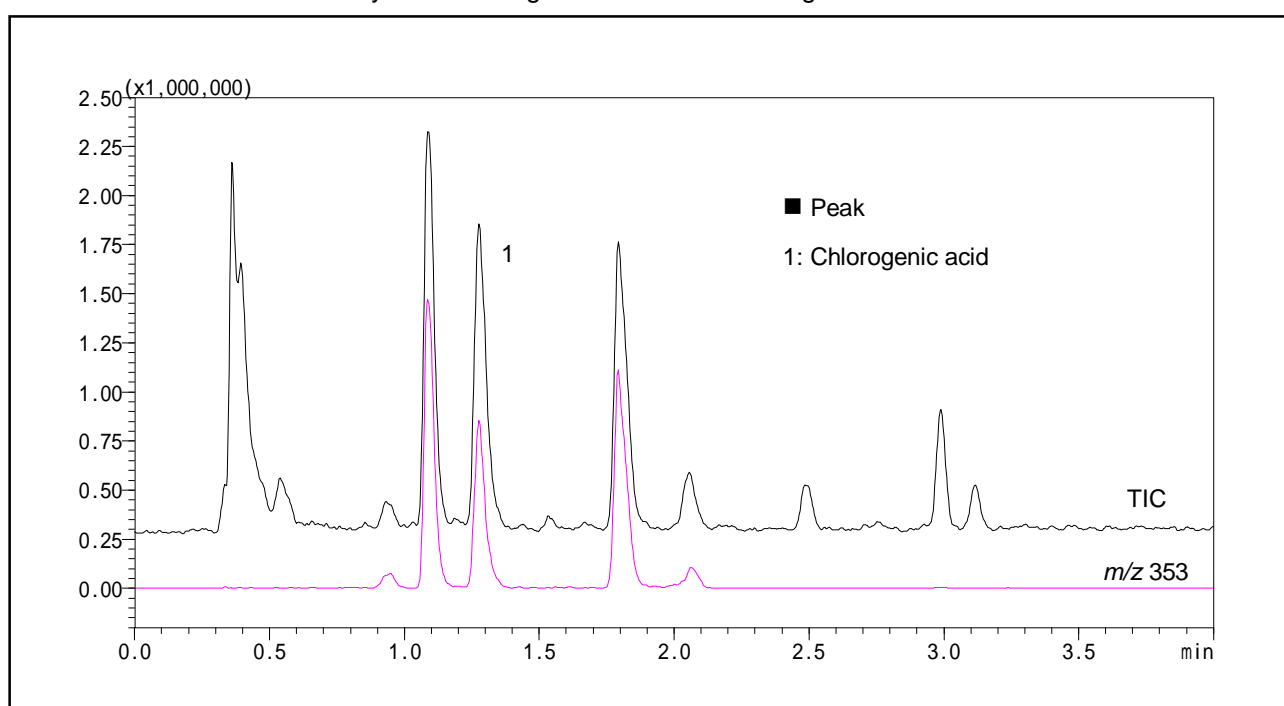


High-Speed Analysis of Chlorogenic Acid

Chlorogenic acid is one type of polyphenol and is understood to have an antioxidant effect. Here we used an LCMS to conduct the analysis of chlorogenic acid in coffee. Negative ions were detected.



Analysis of Chlorogenic Acid in Coffee

[Sample Preparation]

Coffee was filtered through a 0.45 μm membrane filter.

Analytical Conditions

Instrument	: Prominence UFLC system + LCMS-2010EV
Column	: Shim-pack XR-ODS (75 mm x 2.0 mm <i>i.d.</i>)
Mobile Phase	: A) 50 mmol/L ammonium acetate (pH 4.6) B) Acetonitrile B.conc; 5% to 15% (0 to 4 min)
Flow Rate	: 0.5 mL/min
Column Temperature	: 40 °C
Detection	: MS; ESI-Negative, Scan
Sample Volume	: 2 μL