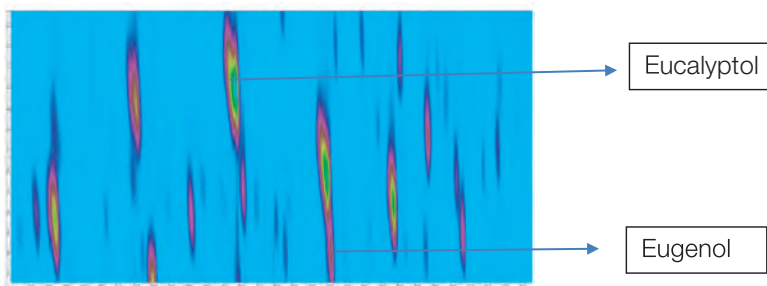
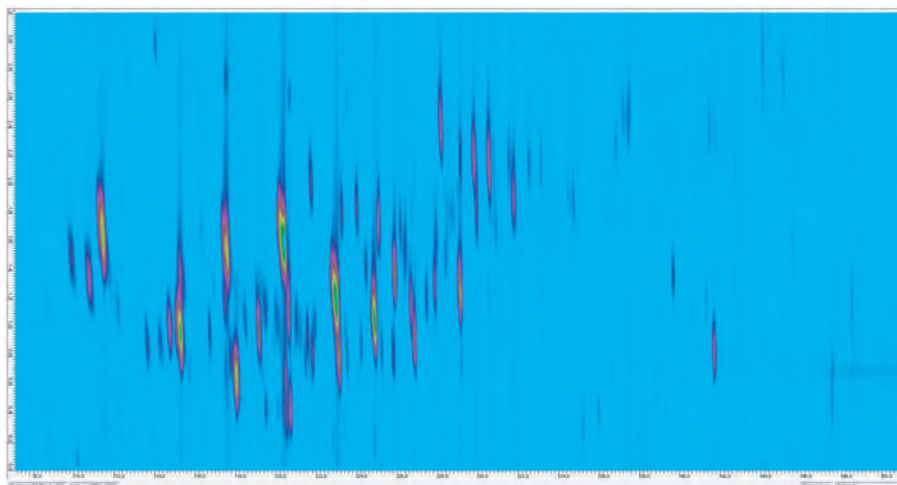


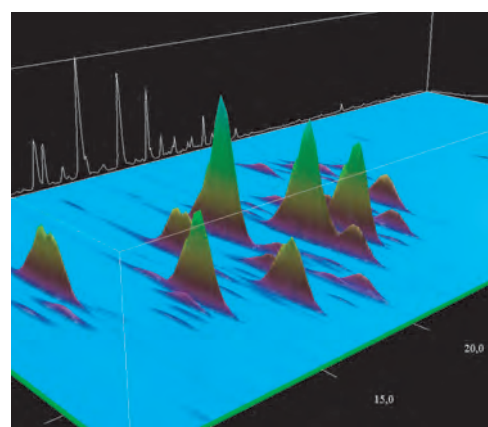
## Pyrolysis Oil of Spruce Lignin with GCXGC FID/MSD<sup>®</sup>

**Author Application Note: Mark van Lieshout, 2015**

In the research of renewable fuels, wood is considered to be one of the most promising material for such energy sources. Especially in the Nordic countries, where this material is widely available. In this application Spruce lignin is the material for investigation. The raw lignin fibers are rapidly heated up to 500°C under a continuous nitrogen flow. The volatile gas phase, methane/ethane is collected. Other less volatile gases are directly condensates and collected. The result is a pyrolysis oil. This oil is injected into an Agilent 7890 GC with FID detector as well as a MSD. The complexity of such sample shows that the used GCXGC technology is really the best choice for optimal separation of all the compounds. These compounds range from aliphatic to more polar phenol-like compounds. Typical compounds like Eucalyptol and Eugenol are also found.



Enlargement of details of the 2D plot



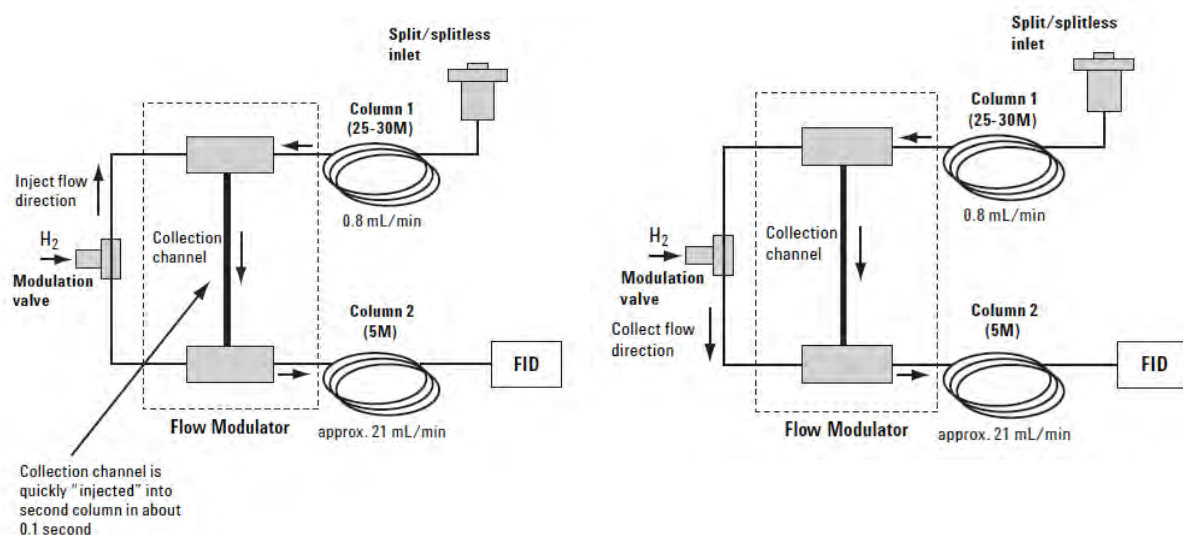
3D view of Spruce lignin Pyrolysis!

Instrument used: Agilent GC 7890 GC equipped with an FID and 5977 MSD.

The modulator is the Capillary Flow Modulator, CFT with a Np column set, non-polar in the first dimension and mid-polar in the second dimension. The CFT is using no mechanical valve in the sample flow line, but needs a high outlet flow to ensure a rapid transfer from the first dimension column to the second column. For the correct interface between the Flow modulation and the MSD, a 1:10 splitter is installed. The split flow is directed into the FID.



Agilent GC 7890 GC equipped with an FID and 5977 MSD.



JSB is supplier of Comprehensive Solutions on the Agilent GC – and MS platform.

*Acknowledgement: Samples were provided and run by Roman Tschentscher, Sintef Materials & Chemistry, Oslo Norway.*

#### Headquarters

JSB International  
Tramstraat 15  
5611 CM Eindhoven  
T +31 (0) 40 251 47 53  
F +31 (0) 40 251 47 58

Zoex Europe  
Tramstraat 15  
5611 CM Eindhoven  
T +31 (0) 40 257 39 72  
F +31 (0) 40 251 47 58

#### Sales and Service

Netherlands  
Apolloweg 2B  
8239 DA Lelystad  
T +31 (0) 320 87 00 18  
F +31 (0) 320 87 00 19

Belgium  
Grensstraat 7  
Box 3 1831 Diegem  
T +32 (0) 2 721 92 11  
F +32 (0) 2 720 76 22

Germany  
Max-Planck-Strasse 4  
D-47475 Kamp-Lintfort  
T +49 (0) 28 42 9280 799  
F +49 (0) 28 42 9732 638

UK & Ireland  
Cedar Court,  
Grove Park Business Est.  
White Waltham, Maidenhead  
Berks, SL6 3LW  
T +44 (0) 16 288 220 48  
F +44 (0) 70 394 006 78

info@go-jsb.com  
www.go-jsb.com

