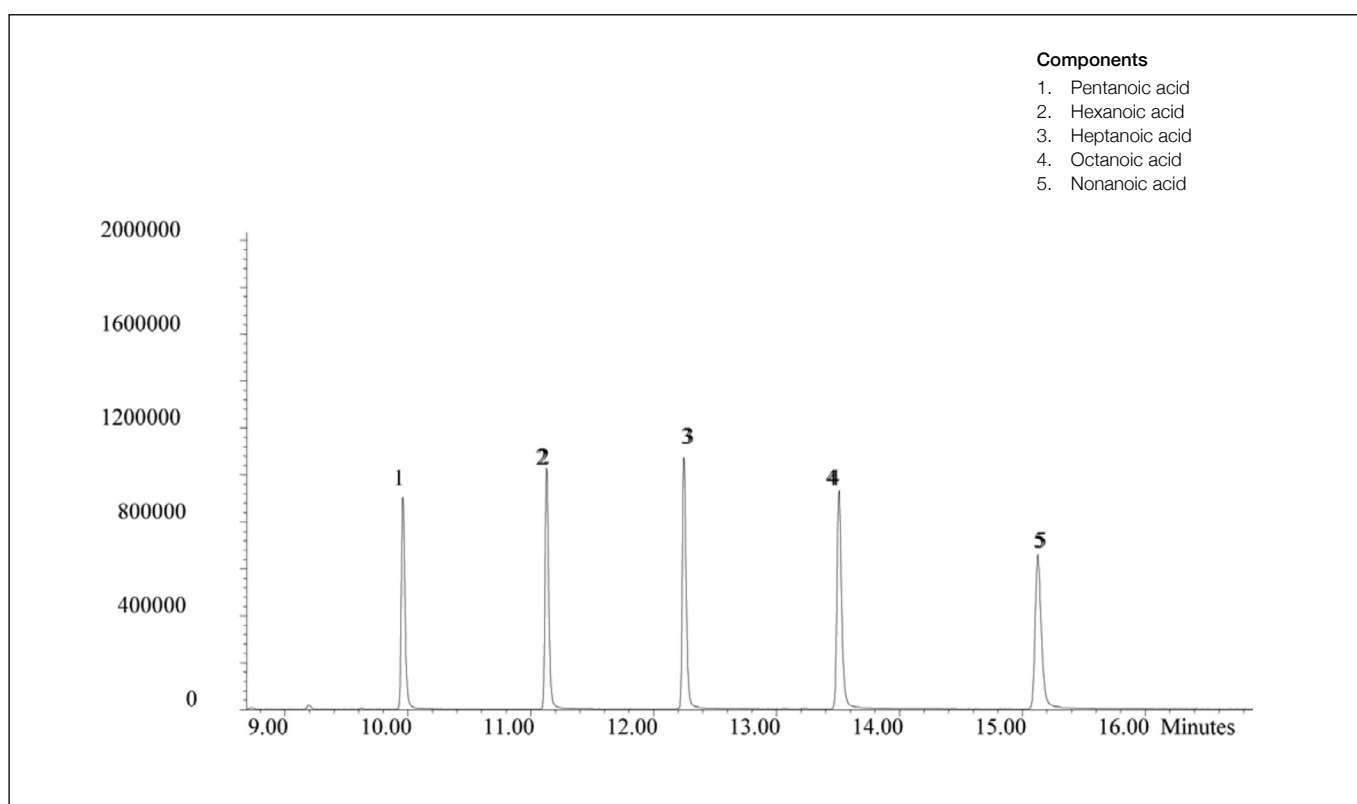


Analysis of organic acids C5-C9

SolGel-WAX™

Column part number	054796		
Phase	SolGel-WAX™	Carrier gas	He, 8.8 psi
Column	30 m x 0.25 mm x 0.25 µm	Carrier gas flow	1.0 mL/min
Sample	10 ng/µL Organic acids in dichloromethane	Constant flow	On
		Average linear velocity	37 cm/sec at 70°C
Initial temperature	70°C, 1 min	Injection mode	Split (100:1)
Rate	10°C to 180°C	Injection volume	0.1 µL
Final temperature	180°C, 5 min	Injection temperature	250°C
Detector	MS	Liner type	4 mm ID Double Taper



For more information visit www.trajanscimed.com or contact techsupport@trajanscimed.com