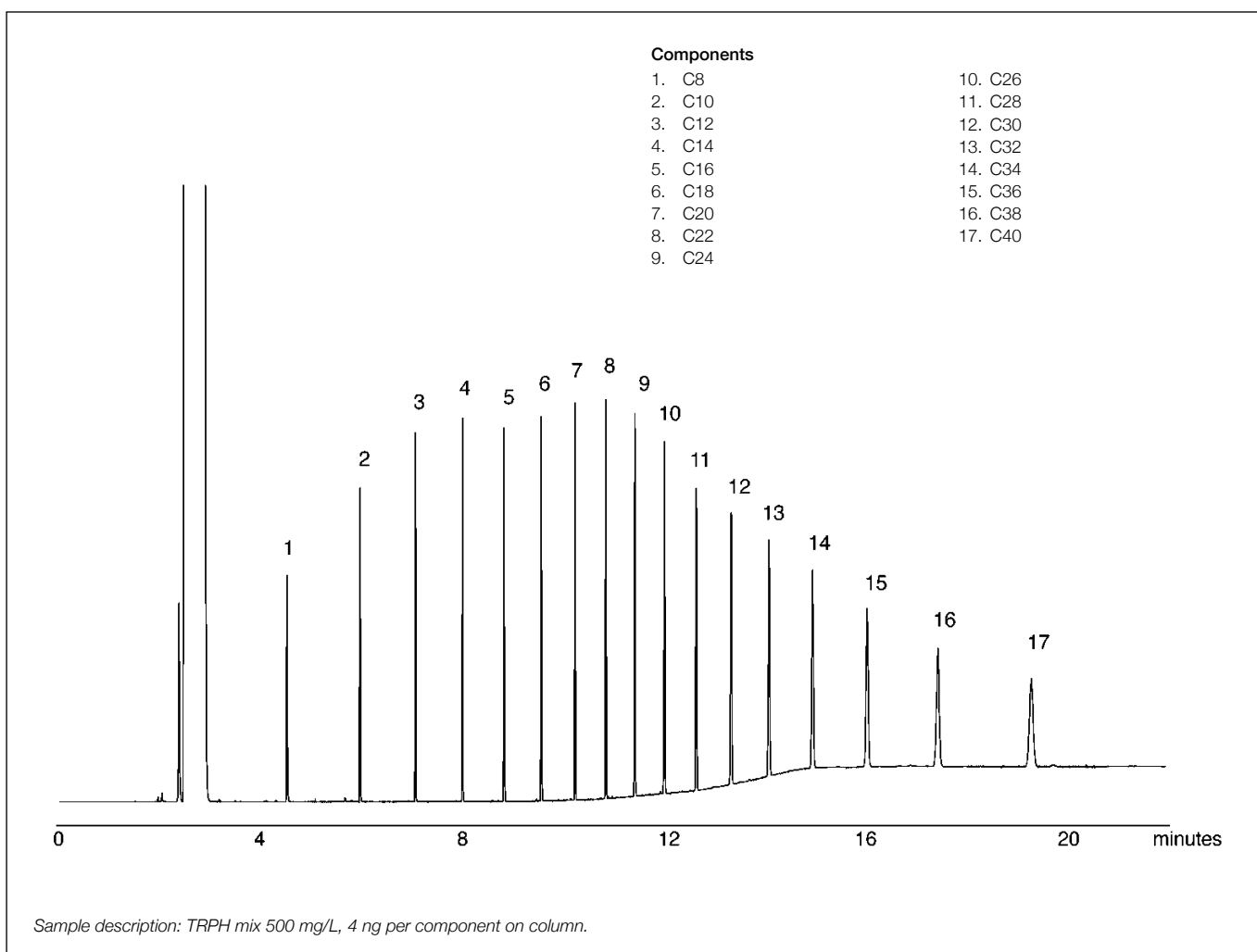


Total recoverable petroleum hydrocarbons (TRPH) C8-C40

SolGel-1ms™

Column part number	054795		
Phase	SolGel-1ms™	Detector	FID at 340°C
Column	30 m x 0.25 mm x 0.25 µm	Injection mode	Split (62.5:1)
Initial temperature	40°C, 2 min	Carrier gas	He, 16.6 psi, 35 cm/sec at 40°C
Rate 1	30°C/min to 310°C, 0 min	Injection volume	0.5 µL
Rate 2	10°C/min to 340°C	Liner type	Double taper
Final temperature	340°C, 0 min		


 For more information visit www.trajanscimed.com or contact techsupport@trajanscimed.com