

# SIMPLIFY YOUR STARTUP FOR UNTARGETED PESTICIDE SCREENING

## TOF and Q-TOF LC/MS Pesticide Application Kit

The Measure of Confidence



### Agilent LC/MS Application Kits

#### Screen samples quickly and easily using pretested methods and a Pesticide Accurate Mass Database and Library

Conventional multi-target pesticide screening methods are based upon triple quadrupole technology. However, these methods are limited to target compounds, and do not allow a retrospective analysis of collected data.

Packaging sensitive, high-performance TOF and Q-TOF instruments with Pesticide LC/MS Application Kits overcomes this limitation. Each user-friendly Application Kit combines pretested analysis methods with powerful software tools that, together, simplify the setup of screening applications. This enables even high-volume labs to perform truly comprehensive screening for large numbers of both target and non-target compounds.

#### Capture all the data, all the time

Using TOF and Q-TOF technology for your pesticides screening allows you to retain all spectral data, not just your original range of interest. That means you can refer back to your data anytime – without reruns – to investigate samples further.

#### The following components are included – saving you time and money:

- Agilent 1600-pesticide Accurate Mass Personal Compound Database (PCD) or Accurate Mass MS/MS Personal Compound Database and Library (PCDL) with Accurate Mass MS/MS spectra for more than 700 pesticides
- Comprehensive pesticide test mix with more than 250 pesticides
- Agilent LC columns ideally suited for Rapid Resolution Liquid Chromatography (RRLC) and Ultra High Pressure Liquid Chromatography (UHPLC) methods
- Quick-start guide and Application Note that show you how to run the test mixes and create screening methods
- CD-ROM with examples of easy-to-use screening methods, data files, and reports that demonstrate method setup and adaptation
- On site application-based training to assist with method setup for quick and effective startup



**Agilent Technologies**

Leading-edge technologies deliver speed, sensitivity, and powerful data mining tools that make broad screening accessible to your lab



A more than 1600-pesticide PCD or PCDL and Agilent MassHunter Data Acquisition and Analysis software let you quickly implement high quality screening methods, which can be modified to meet your future needs.



Industry-leading RRLC and UHPLC separations that enhance your results and productivity.



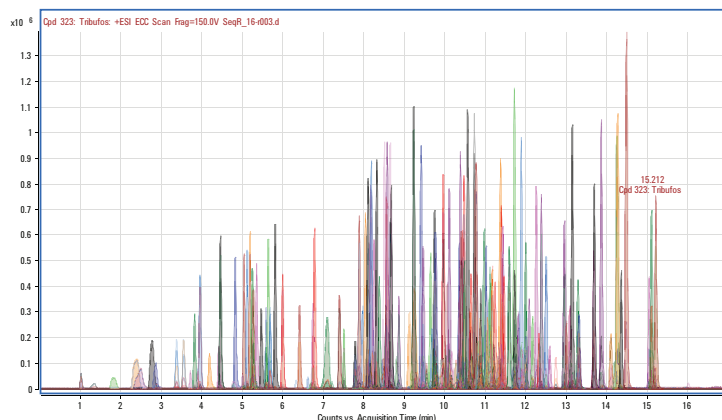
Agilent's Jet Stream Electro spray Ion Source lowers detection levels of pesticides in complex matrices.



Best-in-class MS and MS/MS mass accuracy: our TOF and Q-TOF Full Scan capability lets you access all the data, all the time, opening up endless possibilities for screening multiple analytes and non-target compounds.

## Pre-developed examples help you start screening for pesticides in a fraction of the time

To demonstrate its functionality, Agilent's TOF and Q-TOF Pesticide Application Kits include a comprehensive pesticide test mix for both positive and negative ion modes. A general pesticide screening method example is also provided.



Here you see an extracted chromatogram of 200 pesticides using the Agilent 1200 Series SL LC with the Agilent 6230 TOF.

Compound Name	Formula	Mass	Anion	Cation	RT (min)	CAS	ChemSpider	IUPAC Name	Num Spectra
Propene	CH182N5	229.1042			138.402	4368		6-Chloro-N,N-dimethyl-1,3,5-triazine-2,4-diamine	3
Methionium	C14H19N	229.11028			28720.178	21669		2,4,5-Trimethyl-Naphenyl-3-Lanamide	0
Picardine (Branco)	C12H22N	229.16779			119015.3	111359		Isolan-2-yl-2-(2-Hydroxyethyl)pyridine-1-carboxylate	3
Tetrahydrophenol	CH2040	229.08098			26167.643	33366		2,3,4,5-Tetrahydrophenol	0
Diazotium-O-methyl	CBH1503	230.02002			862.276	10772		O-(2-(Sulphuranyl)ethyl) O-O-dimethyl phosphorot.	0
Diazotium-S-methyl	CBH1503	230.02002			919.866	12038		S-(2-(Sulphuranyl)ethyl) O-O-dimethyl phosphorot.	3
Azulene	CBH1942	230.03613			3337.713	17707		Methyl [(4-aminophenyl)sulfonyl]carbamate	3
Difluoro acan	C10H16O	230.05304			1497.412	495376		O-Ethyl O-phenyl ethylphosphorothioate	0
Dimethylcarbazole amide	C14H17O	230.06259			36596.721	151979		N-(2'-Methoxy-5'-oxo-1,3,5-triazin-2-yl)-2-methyl-	0
Valone	C14H14O3	230.09429			83.263	6477		2-(2-Methylbutan-2-yl)-5-hydroxy-1,3,2H-dione	0
Pindone (Pval)	C14H14O3	230.09429			83.261	6478		2-(2,2-Dimethylbutan-2-yl)-5-hydroxy-1,3,2H-dione	0

Agilent's Pesticide PCD and PCDL ensure fast, customized method development.

### Ordering information:

Agilent's TOF and Q-TOF LC/MS Pesticide Application Kits:

- Pesticide PCD Kit for TOF or Q-TOF (G6854AA)
- Pesticide PCDL Kit for Q-TOF (G3878AA)

The following are required but not included with the G6854AA or G3878AA kits:

- Agilent 1200 Series RRLC System or Agilent 1290 Infinity LC
- Agilent 6200 Series TOF or 6500 Series Q-TOF LC/MS system
- Agilent MassHunter Software B.05 or higher and Windows 7 64-Bit
- Agilent MassHunter Qualitative Analysis Software B.05 or higher
- Agilent MassHunter Quantitative Analysis Software B.05.02 or higher

## Put your lab on the productivity fast track.

Contact your local Agilent Representative or Agilent Authorized Distributor

Call **800-227-9770** (in the U.S. or Canada) or visit [www.agilent.com/chem/appkits](http://www.agilent.com/chem/appkits)



**Agilent Technologies**