

PROTECT WATER QUALITY AND HUMAN HEALTH

The Measure of Confidence

SEMI-VOLATILES ANALYSIS IN WATER

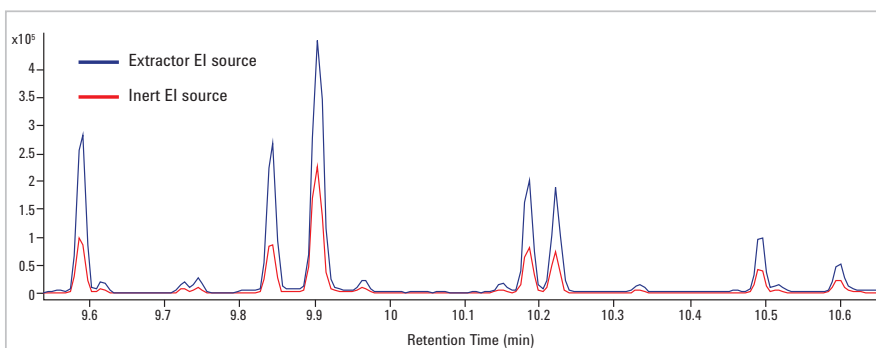
Monitor our most precious resource with Agilent's semi-volatiles analysis products

Consistent data and fast turn-around are critical when detecting low levels of potentially harmful semi-volatile organic compounds in water. You can perform accurate, robust trace analysis – and manage complex classes of compounds – with the NEW Agilent 5977A Series GC/MSD.

The Agilent 5977A Series GC/MSD exceeds the method requirements of environmental regulatory agencies worldwide with new features such as:

- A total inert GC flow path through proprietary surface chemistries
- A highly sensitive new Extractor Ion source
- Optimized analysis and reporting software – including USEPA Method 8270, EU WFD, and other global standards for water samples
- Programmable Helium Conservation Module reduces helium consumption in analysis and standby modes
- *In situ* source conditioning optimizes PAH analysis

Trace-level GC/MSD detection of semi-volatiles in water



Here an Extractor EI source, built into the Agilent 5977A Series GC/MSD, increased sensitivity by 2.5 to 3 times, compared to an Inert EI source. The focusing effect of the Extractor lens allows more ions to reach the detector, resulting in higher-resolution measurements and lower LOD. To ensure flow path inertness, an Agilent J&W HP-5ms Ultra Inert GC column was used (p/n: 19091S-433UI).

You'll find the complete Application Note in our semi-volatiles information kit. Request yours at agilent.com/chem/envirosvoc



Semi-volatiles information kit – complete with applications

- **NEW** Determination of Semi-volatile Organic Compounds in Drinking Water Using the 5977 GC/MSD Application Note (5991-2127EN)
- **NEW** EPA Method 8270 for SVOC Analysis on the 5977A Series GC/MSD Application Note (5991-2153EN)
- Water Analysis Solutions – Applications Notebook (5991-1245EN)
- Water Quality Applications Brochure (5991-0350EN)
- **NEW** Semi-volatiles Analyzer Flyer (5990-6232EN)

Request yours now at agilent.com/chem/envirosvoc

See other side... ►
for workflow solutions that will carry you through every step of your analysis



Agilent Technologies

Explore all of our semi-volatiles product offerings

Confidently perform screening and quantitation – while conforming to the latest worldwide testing requirements – with the widest range of GC/MSD solutions.

OPTIMIZE YOUR ANALYSIS:

Ease the pain of the helium shortage

- **Conservation or conversion:** Through method translation or helium conservation, Agilent can help your laboratory reduce dependence on helium deliveries, reduce monthly carrier gas cost, and ensure continued day-to-day chromatographic operations
- **Improve PAH analysis:** Agilent has introduced a MS source conditioning module that improves peak shape, stabilizes response factors, improves linearity of calibration curves, and reduces cleaning frequency of the MS source



MASSHUNTER SOFTWARE WITH MSD CHEMSTATION:

Deliver accurate and actionable semi-volatiles data on demand

- **MSD ChemStation** continues a 20-year tradition of helping labs develop, distribute, and share sensitive GC/MS methods and reports
- **MassHunter** provides a unified platform for all Agilent MS products – and puts the latest MS tools to work in your lab



SAMPLE PREPARATION:

Accurate semi-volatile analysis starts here

With Agilent sample preparation products, you can *efficiently and quantitatively* extract the analytes you're looking for – ensuring reproducible results right from the start.

- Use less chlorinated solvent and simplify liquid-liquid extractions with **Chem Elut SLE**
- Lower your detection limits by using **Bond Elut SPE** products to clean and concentrate samples
- Prepare challenging samples with greater flexibility using **Bond Elut QuEChERS** extraction and cleanup protocols



INERT FLOW PATH:

Meet trace-level sensitivity requirements for semi-volatiles

Agilent Inert Flow Path solutions provide reliable, consistent inertness for your entire GC flow path. Together, they decrease analyte adsorption for lower detection limits, better s/n response, and greater precision. They also produce high response per unit concentration, so you can perform more injections between routine maintenance tasks.



Make Agilent your partner in semi-volatiles analysis

Visit agilent.com/chem/envirosvoc for your information kit
Or, go to agilent.com/chem/contactus to find your Agilent Representative or Agilent Authorized Distributor

Equip yourself to protect our water and soil with Agilent's extensive applications expertise. Visit agilent.com/chem/environmental

This information is subject to change without notice.

©Agilent Technologies, Inc., 2013
Printed in the USA, April 12, 2013
5991-2142EN

The Measure of Confidence



Agilent Technologies