

Metabolic Phenotyping Using Atmospheric Pressure Gas Chromatography-MS

Vladimir Shulaev,² Ghaste Manoj,^{2,3} Steven Lai,¹ Carolina Salazar,² Nobuhiro Suzuki,² Janna Crossley,² Feroza Kaneez Coudhury,² Khadiza Zaman,² Ron Mittler,² James Langridge,¹ Robert Plumb,¹ Fulvio Mattivi,³ Giuseppe Astarita¹

¹ Waters Corporation, Milford, MA, USA

² Department of Biological Sciences, College of Arts and Sciences, University of North Texas, Denton, TX, USA

³ Department of Food Quality and Nutrition, Research and Innovation Centre, Fondazione Edmund Mach, San Michele all'Adige, Italy

APPLICATION BENEFITS

Atmospheric pressure gas chromatography mass spectrometry (APGC-MS) provides molecular ion information, which is typically absent when traditional vacuum source (i.e., electron ionization) gas chromatography mass spectrometry (GC-MS) is employed. This application note highlights the use of APGC-MS^E for analysis in metabolomics.

WATERS SOLUTIONS

[SYNAPT® G2-S HDMS®](#)

[Mass Spectrometer](#)

[APGC System](#)

[Progenesis® QI Software](#)

[MassLynx® Software v4.1 SCN870](#)

KEY WORDS

Metabolomics, GC, atmospheric pressure gas chromatography

INTRODUCTION

Gas chromatography coupled with mass spectrometry is a well established analytical approach to metabolomics. The most widely used ionization technique is electron ionization (EI), which produces highly fragmented spectra that are library searchable. The molecular ion in an EI spectrum is often absent or of very low abundance. The lack of molecular ion information, especially for derivatized compounds in complex mixtures, can lead to incorrect identification when using spectral matching alone.

Atmospheric pressure GC (APGC) is a soft chemical ionization technique that generates a mass spectrum in which there is minimal fragmentation and conservation of the molecular ion (Figure 1). Additionally, when APGC is combined with a time of flight mass spectrometer (TOF-MS) for exact mass MS^E analysis, comprehensive precursor and fragment ion spectral data is obtained for every detectable component in a complex sample. GC-MS^E offers a simple route to providing high selectivity and confidence for simultaneous identification and quantitation in a single analysis.

Here we report an APGC-TOF MS^E profiling approach and its application to metabolic fingerprinting of Arabidopsis.

EXPERIMENTAL

GC conditions

GC system:	7890A GC
Column:	HP-5MS column, 30 m length, 0.25 mm I.D., and 0.25 μm film thickness (Agilent Technologies)
Carrier gas:	Helium 1 mL/min
Temp. gradient:	Initial 70 $^{\circ}\text{C}$, 5 $^{\circ}\text{C}/\text{min}$ to 310 $^{\circ}\text{C}$, hold 1 min
Injection type:	split mode (split 4:1)
Injector temp.:	230 $^{\circ}\text{C}$
Injection vol.:	1 μL
Make-up gas:	Nitrogen 400 mL/min
Transfer line temp.:	310 $^{\circ}\text{C}$

MS conditions

MS system:	SYNAPT G2-S HDMS
Mode of operation:	TOF-MS ^E
Ionization:	APGC
Corona current:	3 μA
Cone voltage:	20 V
Source temp.:	150 $^{\circ}\text{C}$
Cone gas:	10 L/h
Auxiliary gas flow:	500 L/h
MS gas:	Nitrogen
Acquisition range:	50 to 1200
Transfer CE:	Ramp 20 to 40 V

Data management

Progenesis QI Software v1.0

MassLynx Software v4.1 SCN870

Sample preparation

Arabidopsis thaliana seeds were grown under controlled conditions. Seedlings were harvested and polar metabolites were extracted and derivatized. The dried polar phase was methoximated for 90 minutes at 45 $^{\circ}\text{C}$ and trimethylsilylated for 30 minutes at 37 $^{\circ}\text{C}$.

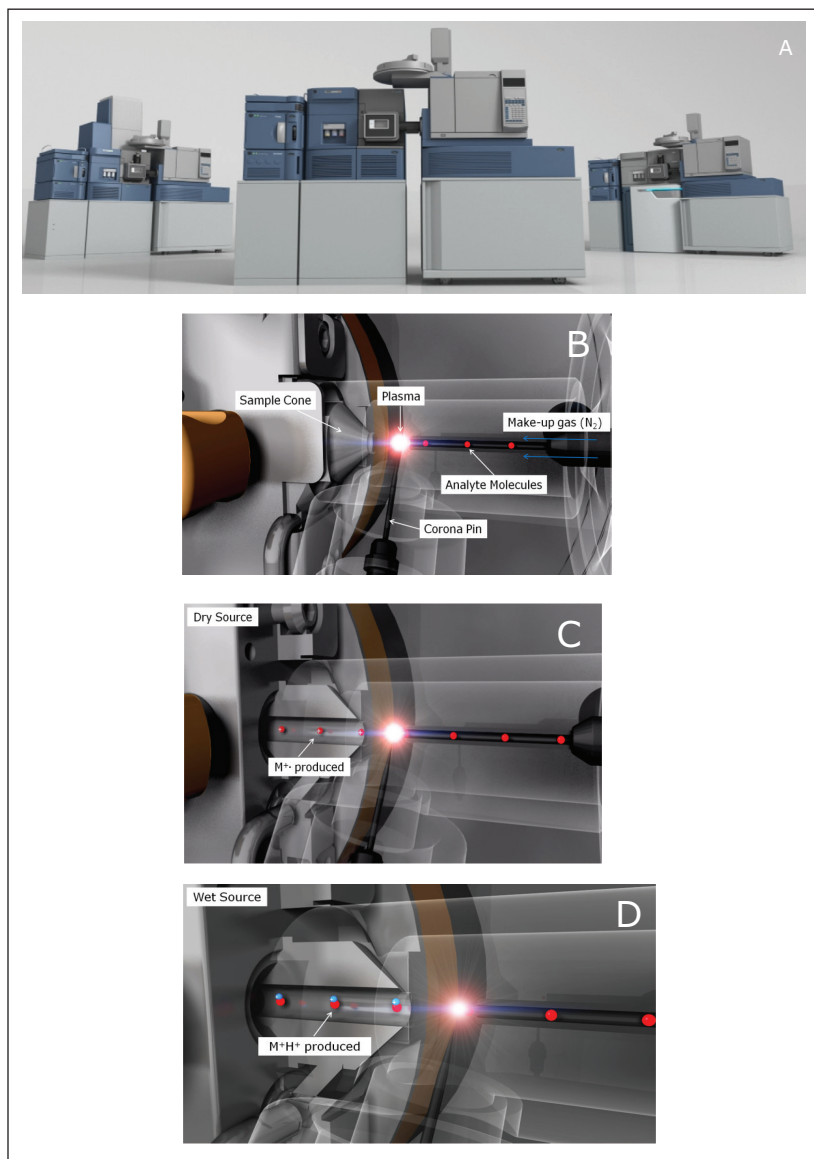


Figure 1. A) An APGC System can be coupled to various Waters MS instruments, including the Xevo[®] TQ-S and the SYNAPT G2-S. The changeover from UPLC[®] to APGC takes less than five minutes. B) The APGC source consists of an ion chamber with a corona pin inside. The GC column enters the source via a heated transfer line. Corona discharge creates nitrogen plasma within this region. Radical cations generated in this plasma interact and ionize the analyte molecules. The ions created are then transferred to the mass analyzer. C) Under dry source conditions the predominant method of ionization is charge transfer, generating molecular radical cations $[M^{\bullet+}]$. This method favours relatively non-polar molecules. D) When a protic solvent, such as water or methanol, is added to the source, the predominant ionisation is proton transfer, generating $[M+H]^+$ ions. This method favors relatively polar molecules.

RESULTS AND DISCUSSION

APGC-MS analysis of commercially available pure reference compounds of known plant metabolites was performed. Following the analysis, an in-house APGC reference database was created containing retention times, and accurate mass-to-charge ratio (m/z) for precursor and fragment ions (Figure 2). APGC provided abundant molecular ions with minimal fragmentation at low collision energy (Figure 2A). To add confidence to compound identification, collision energy was ramped from 20 to 40 eV in the high energy function to generate maximum information from fragment ions (Figure 2A). Due to the use of charge exchange chemical ionization, elevated collision energy data resulted in a spectrum similar to the traditional EI data (Figure 2B).

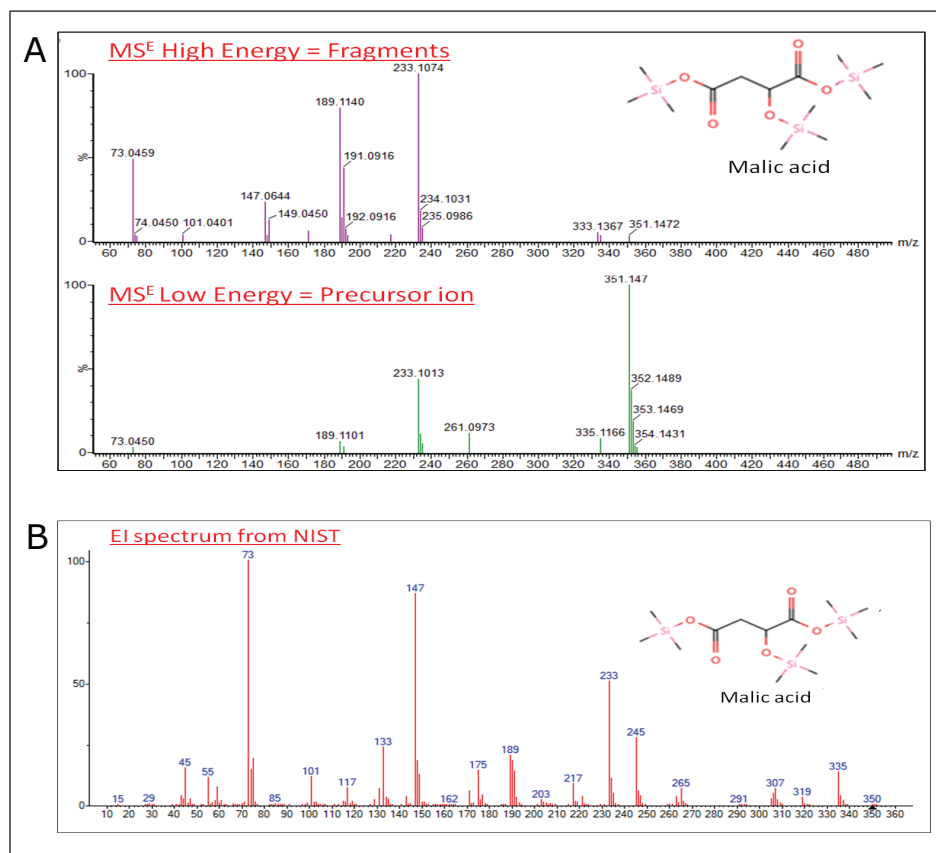


Figure 2. A) Synthetic reference standards were derivatized and analyzed by APGC-SYNAPT HDMS using MS^E acquisition mode. This mode alternates between low and elevated collision energy to acquire both precursor and product ion information in a single analytical run. Advanced software algorithms align precursor and fragment spectra according to retention time and links them together. An in-house database of derivatized precursors and fragments, and retention times was created. B) EI spectrum of derivatized malic acid, obtained from the NIST library, was comparable with the MS^E spectrum obtained by ramping up the collision energy from 20 to 40 eV in the high energy function.

Plant extracts were analyzed using APGC-TOF MS^E and raw data were imported to Progenesis Q1 Software for processing and analysis (Figure 3A and B). Multivariate statistical analysis highlighted the molecular differences between groups of samples (Figure 4A and B). The Progenesis Q1 search engine Metascope allowed us to query experimentally-derived or in-house databases. We were able to customize the search parameters for the metabolite identification according to multiple orthogonal measures such as mass accuracy, retention time and fragmentation matching (Figure 4C). Additionally, if ion mobility is activated, collision cross-section (CCS) data, which reflect the ionic shape of the metabolites in the gas phase, can also be mined for identification.

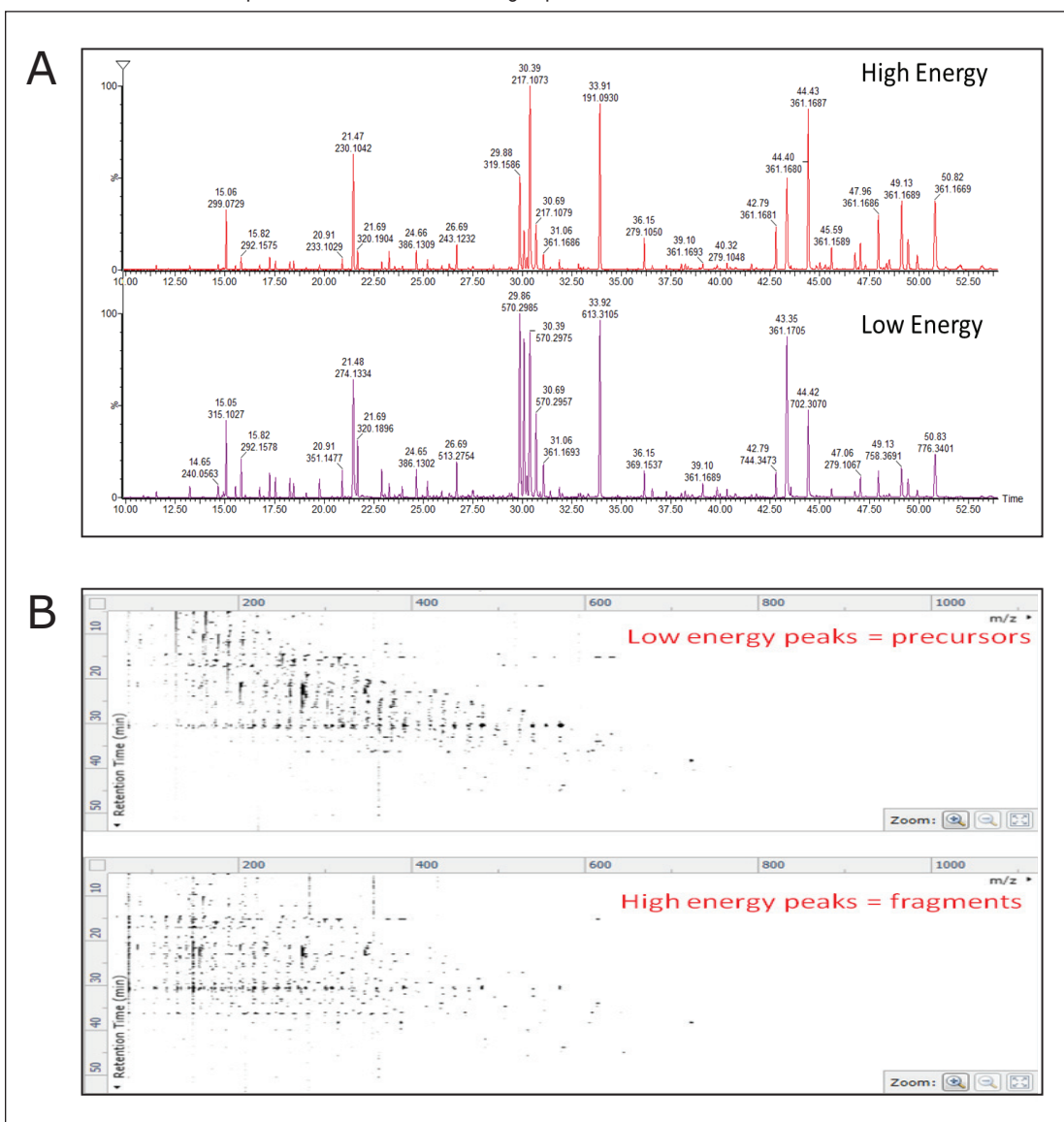


Figure 3. Biological samples were analyzed using APGC-MS^E which provided information for both the intact precursor ions (at low collision energy) and the fragment ions (high collision energy). A) APGC-MS^E chromatogram of the Col-0 Arabidopsis leaf extract. B) Data were imported as bidimensional maps (retention times versus m/z) and processed using Progenesis Q1.

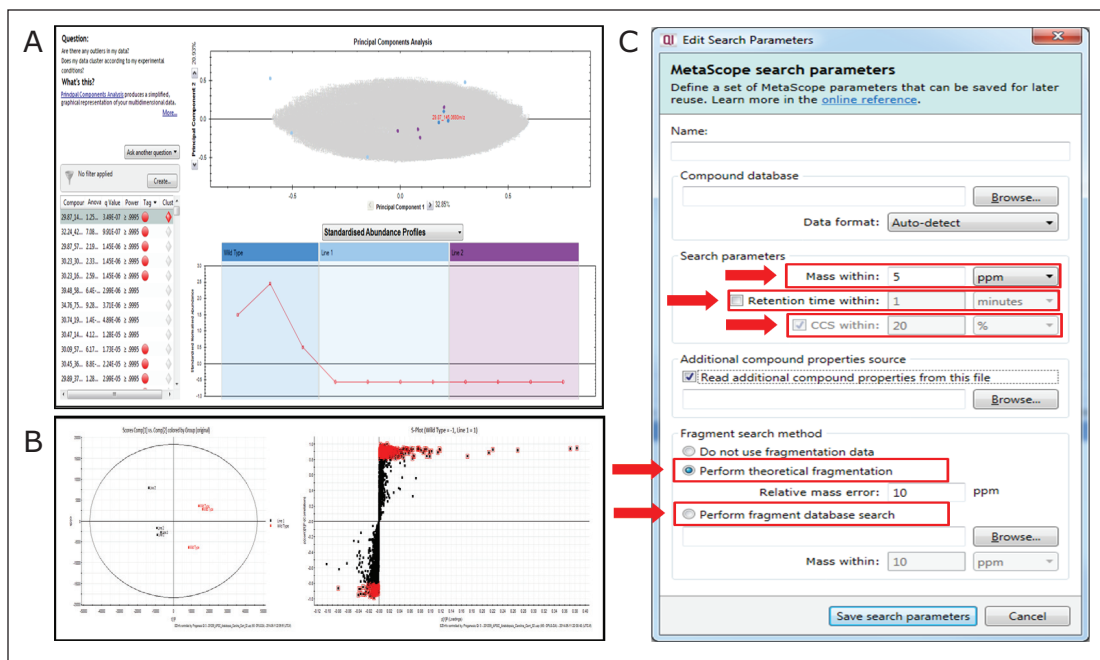


Figure 4. A) PCA model for wild type and mutant lines. B) OPLS-DA model for Arabidopsis Col-0 wild type plants and mutant line. C) The Progenesis Q1 search engine allowed us to query experimentally-derived or in-house databases.

Sample data, generated with the low energy (precursor ion) spectrum and high energy (fragment ion) spectrum of each component, was searched against both the in-house and commercial mass spectrum libraries (Figure 5A and B). The identification score described the level of confidence obtained for each library hit based on accurate mass for precursor and fragment matching, retention time, and isotope ratios (Figure 5A and B).

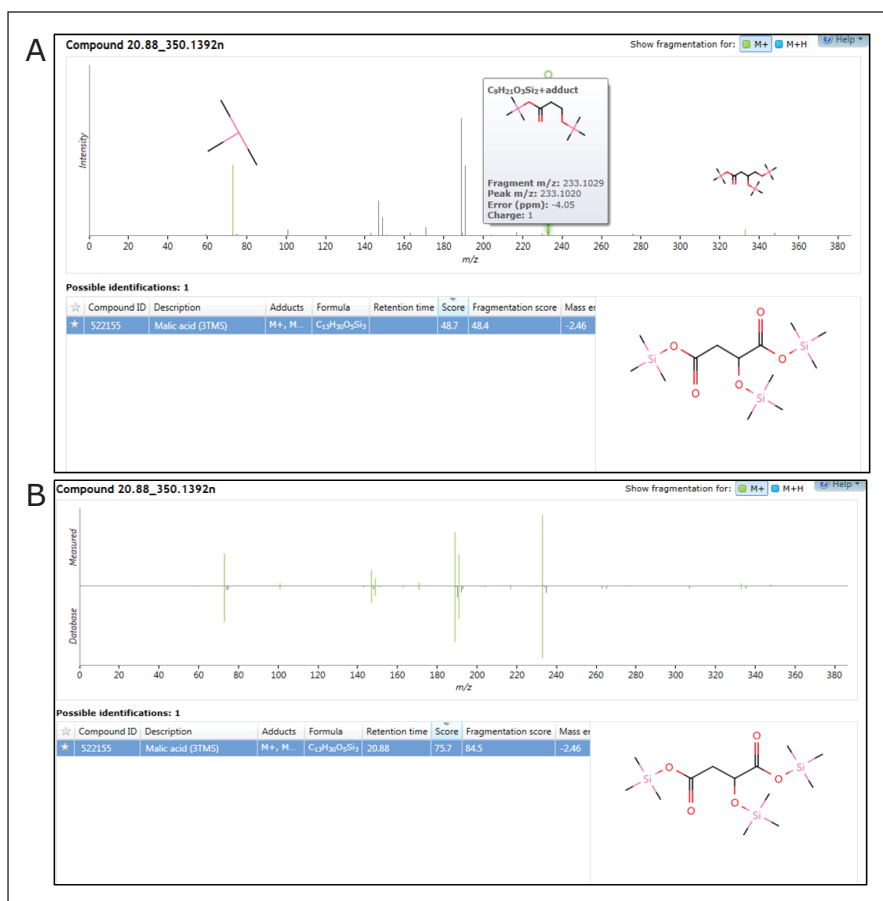


Figure 5. A) APGC-MS^F allowed the identification of malic acid extracted from a biological matrix, using theoretical fragmentation within Progenesis Q1. The spectra of fragment ions were aligned with co-eluting precursor ions and matched against theoretically generated spectra (green signals). B) The identification score improved when identification of malic acid was conducted using an in-house database within Progenesis Q1. The spectra of fragment ions were aligned with co-eluting precursor ions and matched against experimentally generated spectra (green signals).

As structurally similar metabolites often co-elute, the concurrent acquisition of an intact molecular ion, along with fragmentation data for sub-structural determination, was particularly useful. In combination with accurate mass measurement, the molecular ion helps determine the limits of chemical composition, which can subsequently be used along with the fragmentation data for more detailed and specific structural elucidation of both known and unknown metabolites.

A summary workflow for the APGC-TOF-MS^E approach:

1. An in-house database of derivatized metabolites was generated using APGC-MS^E
2. APGC provided abundant molecular ions with minimal fragmentation at low collision energy, which are typically missing when traditional vacuum source GC-MS is employed.
3. Due to the use of charge exchange chemical ionization, the elevated collision energy data resulted in a spectrum similar to the traditional EI data.
4. APGC-MS approach was used for metabolic fingerprinting of a set of Arabidopsis mutants.
5. Sample data generated with the low and high energy function (MS^E) were searched against the in-house database using the search engine within Progenesis QI.

CONCLUSIONS

APGC-TOF MS^E with Progenesis QI is a valuable solution for metabolomics applications. The use of orthogonal information for the metabolite identification, including accurate mass, retention time, and theoretical or measured fragmentation, increased the confidence of metabolite identification while decreasing the number of false positive identifications.

Waters

THE SCIENCE OF WHAT'S POSSIBLE.®

Waters, The Science of What's Possible, SYNAPT, MassLynx, Xevo, and UPLC are registered trademarks of Waters Corporation. Progenesis is a registered trademark of Nonlinear Dynamics, a Waters Company. All other trademarks are the property of their respective owners.

©2015 Waters Corporation. Produced in the U.S.A. February 2015 720005298EN AG-PDF

Waters Corporation
34 Maple Street
Milford, MA 01757 U.S.A.
T: 1 508 478 2000
F: 1 508 872 1990
www.waters.com