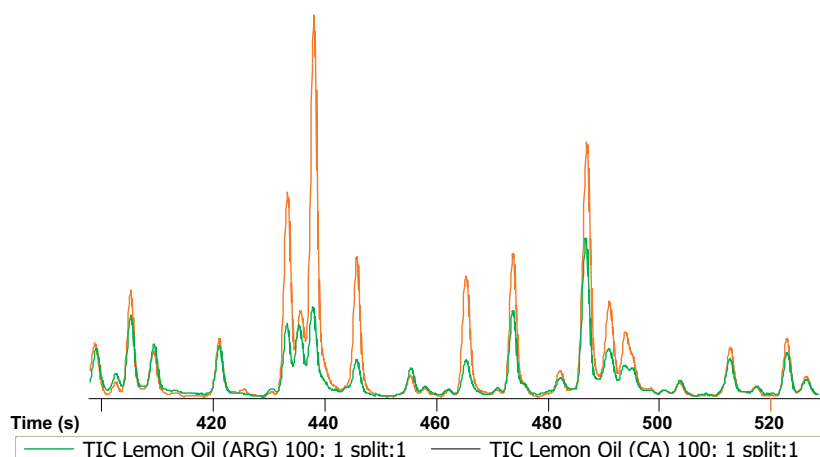


Comparison of Two Lemon Oil Samples by GC-TOFMS

Life Science and Chemical Analysis Centre
LECO Corporation, Saint Joseph, Michigan USA



Peak #	Name	R.T. (s)	Type	Conc.	Unique Mass	S/N	Area
25	1,4-Cyclohexadiene, 1-methyl-4-(1-methylethyl)-	363.1	Unknown		56	584.7	329449
26	Bicyclo[3.2.0]hept-2-ene, 4-bromo-	364.3	Unknown		134	7142	1823556
30	Allopregnane-3 α ,7 α -diol-20-one	398.7	Unknown		71	786.7	322213
36	Limonene oxide, cis-	433.3	Out of Tolerance	300.5	71	1721	573926
38	Bicyclo[3.1.0]hexan-3-ol, 4-methylene-1-(1-methylethyl)-, (1 α ,3 α ,5 α)-	435.9	Unknown		70	455.3	161285
39	Limonene oxide, trans-	438.1	Out of Tolerance	435.1	67	11090	2249180

A comparison of two lemon oil samples. "Unknowns" are compounds not present in the original sample, but are present in the sample being compared to it. "Out of tolerance" indicates that the compound is present in both samples, but its concentration differs by more than a user-defined amount.

Column:

10 m x 0.18 mm x 0.2 μ m Rtx-5

TOFMS:

35 to 350 m/z @ 10 spectra/s

For questions on this analysis e-mail us at:
life_science@leco.com

For a complete listing of snapshots and application notes visit us on the web at www.leco.com

