

Comparing Orthogonality of Convergence Chromatography to Reversed-Phase LC

Michael D. Jones, Kate Yu, and Warren Potts



GOAL

To demonstrate the benefits of UltraPerformance Convergence Chromatography™ (UPC²®) as an orthogonal mode of separation to reversed-phase liquid chromatography (LC).

BACKGROUND

Chromatographic profiling of pharmaceutical drugs, raw materials, biologics, and even natural products is an important technique for scientists to best understand the characteristics related to their research or final products. Typically, scientists rely on analytical tools that provide orthogonal ways to analyze their solutes and assess their content.

For example, in pharmaceutical companies, LC columns with different selectivity are used to evaluate the raw material purity, refine route synthesis, determine finished drug product stability, and investigate container closure effects. For natural product research, different analytical techniques such as reversed-phase LC/MS, high performance thin layer chromatography (HPTLC), capillary electrophoresis with mass spectrometry (CE/MS), and gas chromatography with MS (GC/MS) are utilized to discover bioactive constituents in multiple sample extraction techniques. For bioanalytics, orthogonal methods of analysis are explored to determine drug safety and efficacy. Purification groups use orthogonal selectivity to better isolate and

In this study contrasting UPC² and UPLC chromatographic techniques by peak elution order, we highlight the importance of orthogonality, the challenges associated with impurity isolation and purification, and the role of profile fingerprinting.

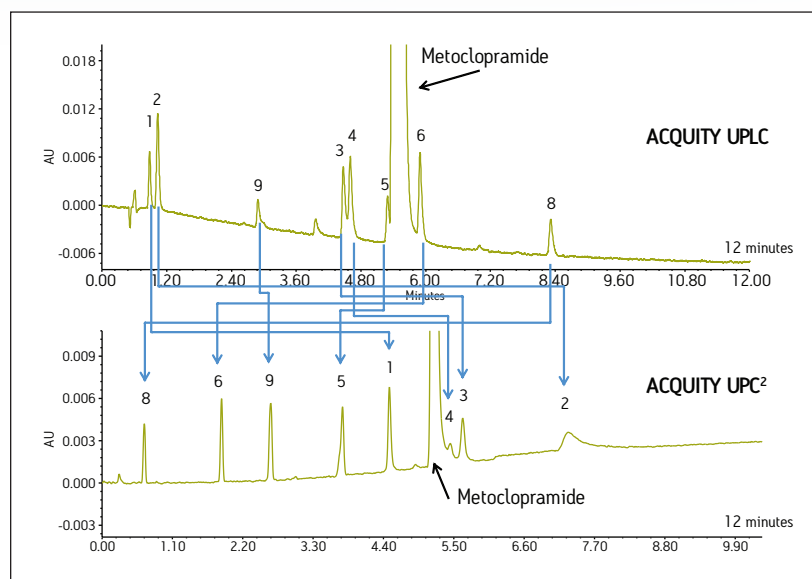


Figure 1. Comparison of UPLC and UPC² for metoclopramide and related impurities.

purify solutes of interest. In commercialization, information from orthogonal analytical tools aids in the final decisions that aim to improve product quality.

In this investigation, pharmaceutical compounds and natural products were analyzed by convergence chromatography (UPC²) and reversed-phase LC, using UPLC®. Evaluating the orthogonality between the two chromatographic techniques was accomplished by tracking the peak elution order of the solutes by UV and mass spectrometry. The samples were analyzed using an ACQUITY UPLC® System for the reversed-phase LC analysis and the ACQUITY® UPC² for the convergence chromatography analysis. Sub-2- μm particle stationary phases were used for each separation technique. Each example highlights the importance of orthogonality, the challenges associated with impurity isolation and purification, and the role of profile fingerprinting.

THE SOLUTION

An impurity profiling method was developed for metoclopramide using both RPLC and UPC².¹ The example shown in Figure 1 demonstrates the relative retention differences between UPC² and UPLC. Peaks that are not resolved by UPLC are resolved by UPC², and vice versa. UPC² also has the ability to provide longer retention for polar compounds that are difficult to retain by UPLC (e.g., peaks 1 and 2). In addition, UPC² can be used to resolve critical pairs (i.e., peak 5 from metoclopramide), facilitating the isolation of unknown compounds for subsequent identification and characterization.

Therefore the use of both analytical tools maximizes the ability to choose an appropriate scale-up approach, effectively aiding the drug development process.

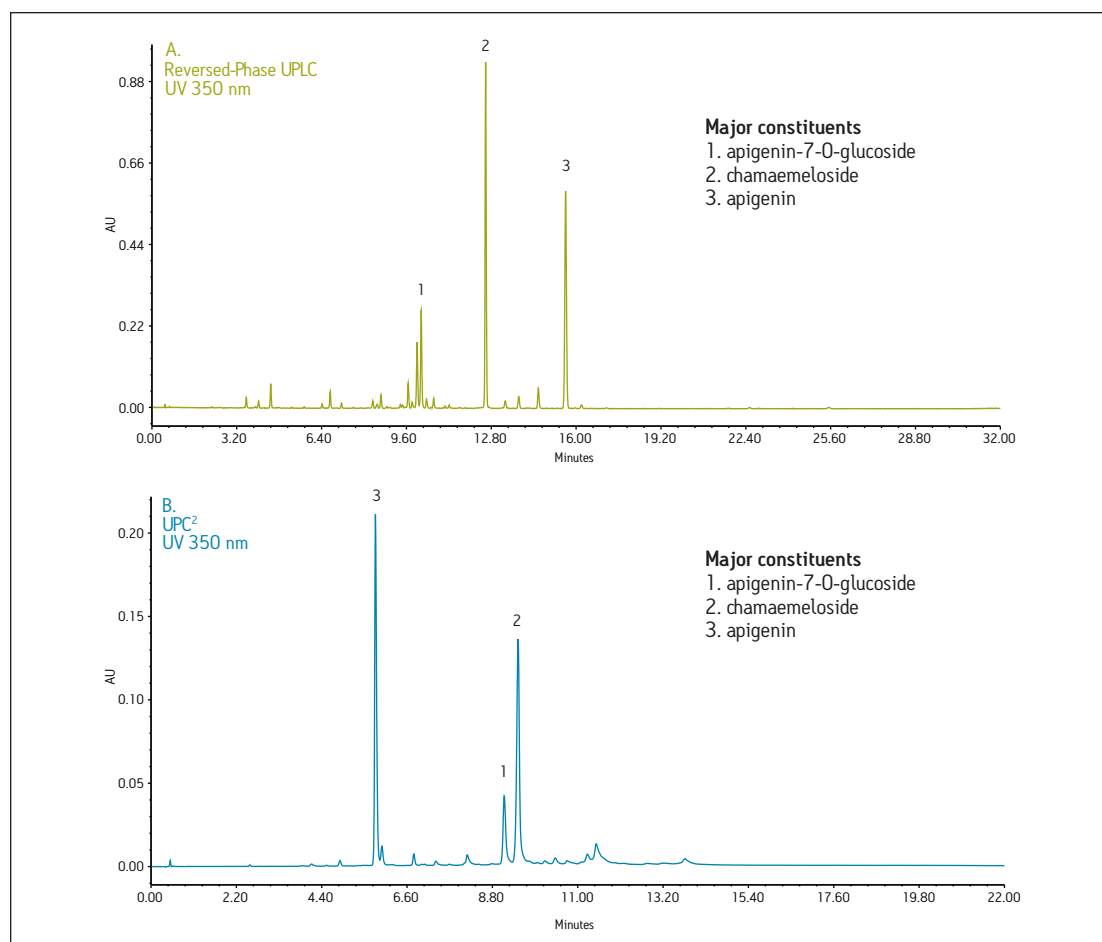


Figure 2. Comparison of UPLC and UPC² chromatographic traces of German chamomile methanolic extract.

The next example demonstrates the need for orthogonal modes of separation for complex natural product extracts (German and Roman chamomile methanolic extracts). For UPLC and UPC², peaks were identified using mass spectrometry (ACQUITY SQD System). Each peak was assigned a nominal peak I.D., whereas retention times were recorded for each UPLC and UPC² result. The data was plotted as retention time versus peak I.D. (not shown) to visualize the orthogonality of the separation techniques. The UPC² elution profile was observed as a scattered relationship rather than an inversely linear relationship to that of UPLC.

The highly non-polar analytes that eluted last by reversed-phase UPLC were observed to elute earlier by UPC² (Figure 2). The real importance of an orthogonal method is illustrated with the extracted chromatograms for m/z 475 using both UPLC and UPC² where the peaks are isobaric (same mass). UPC² resolves an additional peak that cannot be resolved in LC, and that also cannot be distinguished by MS due to the isobaric nature of the compounds. This makes UPC² an ideal orthogonal method for characterization of complex mixtures (Figure 3).

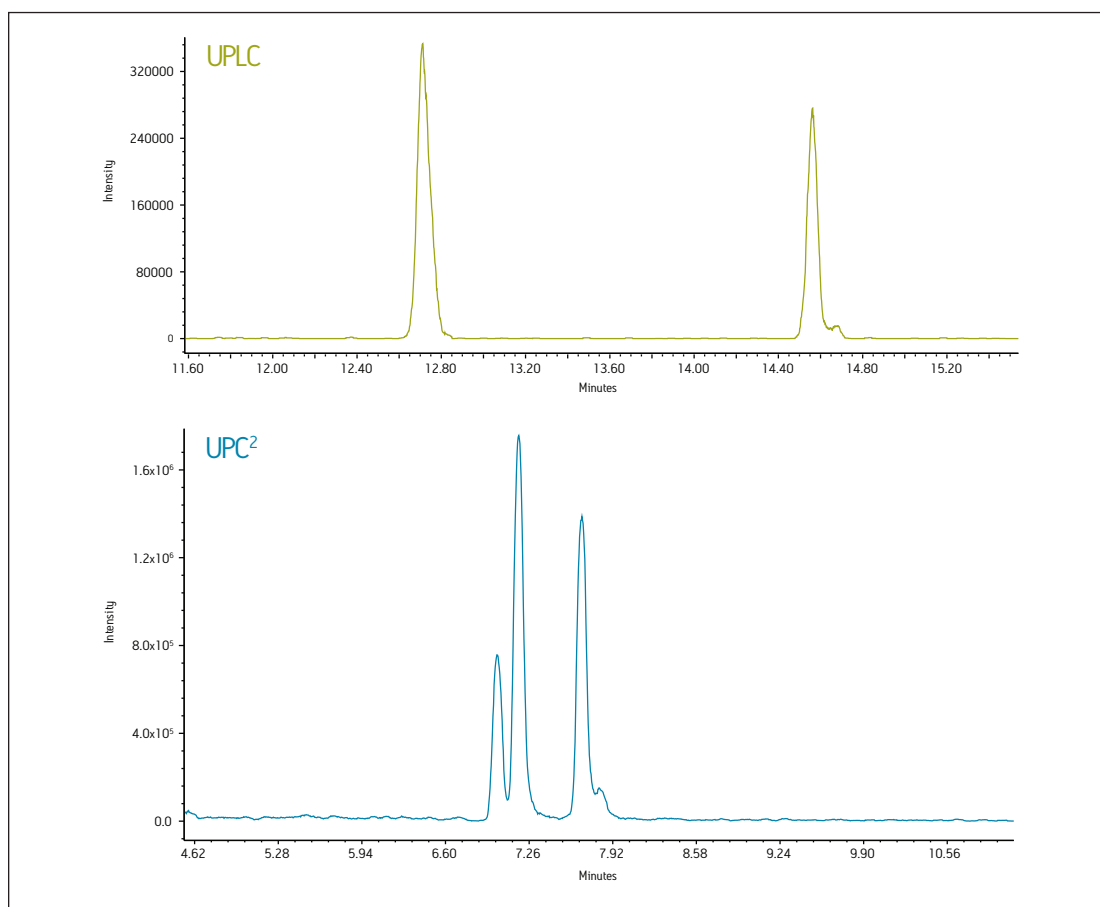
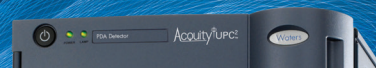


Figure 3. XIC of $m/z=475$. In comparing the reversed-phase UPLC and UPC² traces, an additional peak was found with UPC².



SUMMARY

In conclusion, both application examples have proven convergence chromatography to be an effective orthogonal separation technique to commonly used reversed-phase LC. UPC² provides a different elution order than RPLC, which is critical for resolving all peaks in a sample. From a drug development perspective, the different selectivity allows the scientist to choose a separation technique that will provide an easier path for scale-up and isolation. Unlike normal-phase LC, the separations are compatible with MS detection to give more information on unknown peaks or peak identification. The chamomile methanolic extract, directly injected for UPC² analysis, demonstrated compatibility with many of the extraction solvents used for complex mixture analysis such as natural products. Additionally, UPC² can resolve isobaric compounds, which cannot always be separated by other techniques.

Reference

1. Jones MD, Potts W. UPC² Method Development for Achiral Impurity Analysis. Waters Application Note 720004577EN. 2013 Jan.

Waters

THE SCIENCE OF WHAT'S POSSIBLE.™

Waters, ACQUITY, ACQUITY UPLC, UPLC, and UPC² are registered trademarks of Waters Corporation. UltraPerformance Convergence Chromatography and The Science of What's Possible are trademarks of Waters Corporation. All other trademarks are the property of their respective owners.

©2013 Waters Corporation. Produced in the U.S.A.
May 2013 720004689EN TC-PDF

Waters Corporation
34 Maple Street
Milford, MA 01757 U.S.A.
T: 1 508 478 2000
F: 1 508 872 1990
www.waters.com

