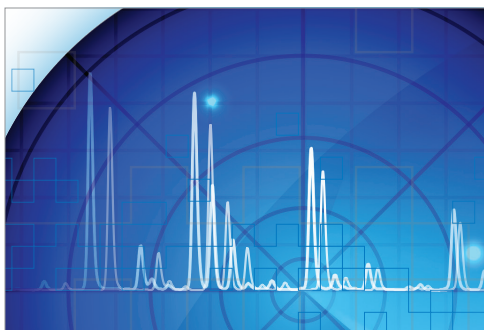


## Enhanced Specificity Provides Increased Quantitative Accuracy When Using SONAR for the Analysis of Low Level Lipids in Plasma-Based Extracts



### GOAL

To demonstrate wide dynamic range capabilities with improved spectral clarity when using SONAR™ to increase identification and quantitative accuracy of low level components in complex samples.

### BACKGROUND

Quantitative lipidomics for various biological samples such as plasma and tissue extracts are routinely performed using LC-MS methodologies, with the most common form using multiple reaction monitoring (MRM) for targeted analyses. However, advancements in high resolution technology and the introduction of alternative data acquisition modes such as data independent acquisition (DIA) provide additional benefits over more traditional modes of acquisition. The complexity of lipid extracts provides technical challenges such as co-elution of multiple species, which consequently has an impact on false positive identification and quantitative accuracy. The presence of multiple fragment ions generated from the dissociation of co-eluting precursors can result in false estimates being reported for quantitative studies. SONAR is a DIA

SONAR demonstrates high quantitative accuracy over a wide dynamic range for highly complex samples comprising of spiked components at low levels.

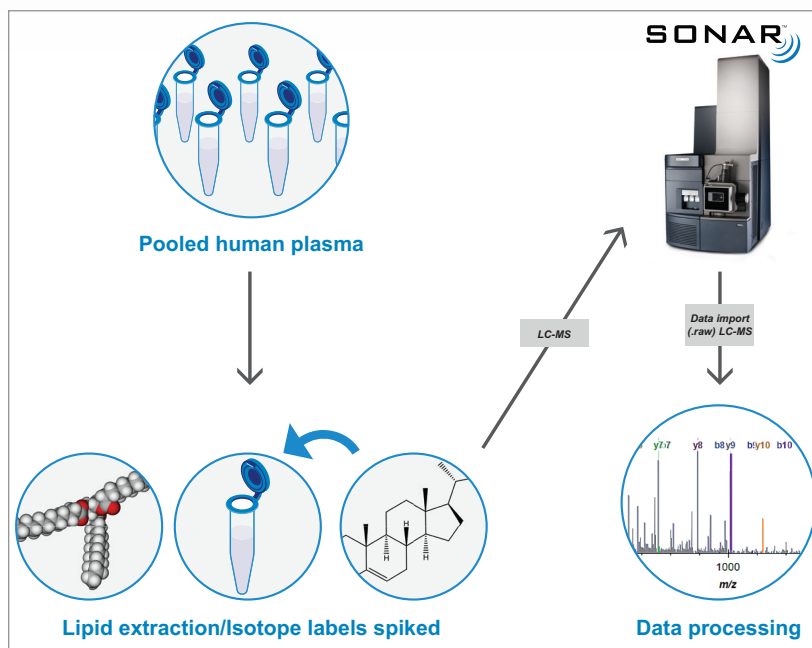


Figure 1. Experimental design and data acquisition/informatics workflow.

acquisition method that collects both precursor and MS-MS data, providing clarity without the associated method development steps. Here we describe the use of SONAR for targeted based studies, involving plasma lipid extracts spiked with deuterated standards at varying concentration to assess the limits of quantitation, linearity and dynamic range.

## THE SOLUTION

SONAR has been utilized for the analysis of lipid extracts derived from pooled human plasma samples. Lipids were extracted using IPA (1:2 v:v) and incubated at room temperature for 10 min prior to overnight storage at -20 °C. Samples were then centrifuged at 14,000 g for 20 min and the resulting supernatant used for analysis. For quantitative purposes, deuterated lipid standards (SPLASH LipidoMix, Avanti Polar Lipids, Inc.) containing a range of lipid classes from 350 to 2 µg/mL were spiked into the plasma extracts at ratios ranging from 1:1 to 1:100,000 (Figure 1).

Lipids were separated over a 20 min LC gradient using reversed phase (RP) chromatography (ACQUITY™ UPLC™ CSH C<sub>18</sub> Column, 1.7 µm, 2.1 x 100 mm)! LC-MS data were acquired using a Xevo™ G2-XS QToF Mass Spectrometer operating in SONAR mode with a quadrupole window of 10 Da, scanning over a precursor mass range of 350–950 *m/z*, whilst the ToF scanned over 50–1200 *m/z* with a scan rate of 0.1 sec. Comparative DIA datasets based on the same sample loadings were also acquired using MS<sup>E</sup>, which operates a non-resolving quadrupole. Data from all experiments were processed and interrogated using Skyline (University of Washington) as shown in Figure 2.

Chromatographic separation of complex lipid samples can result in the co-elution of multiple species, providing multiple precursors and therefore generate mixed fragmentation spectra. Inherently this impacts on the accuracy of quantitation which can be achieved due to the interference effects incurred from multiple fragment ions being present. An example of the spectral clean-up provided by SONAR is shown in Figure 3 for a representative LPE (18:1) (d7). On average, the limit of detection achieved (LOD) was 0.001 µg/mL, while 0.1 µg/mL was established as the limit of quantification (LOQ), which is comparable with previous targeted studies<sup>2</sup> The consequences of improved spectral clarity<sup>1</sup> and quantitative accuracy are further demonstrated in Figure 4 with three transitions corresponding to DG (15:0/18:1) (d7) showing good linearity over a wide dynamic range.

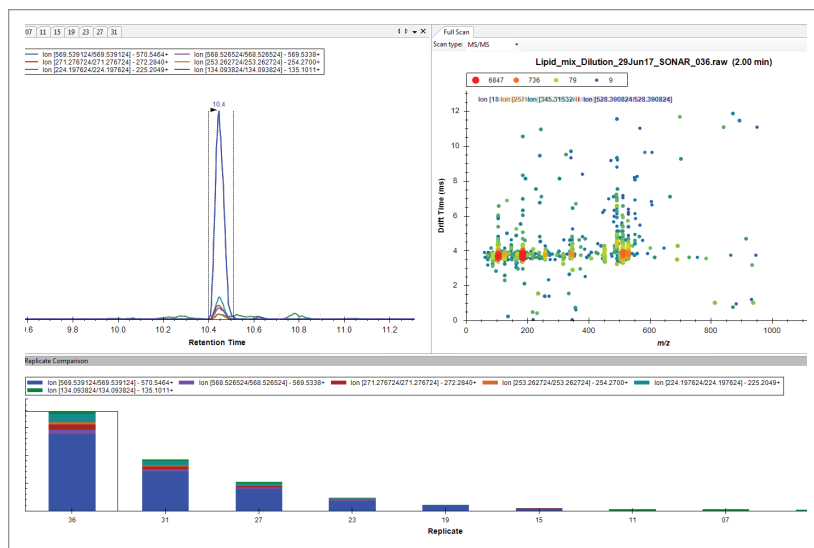


Figure 2. Visualizing SONAR data in Skyline. Representative transitions corresponding to DG (15:0/18:1) (d7) spiked into a plasma background matrix is shown (RT = 10.4 min). Full scan data (top right hand pane) demonstrates the additional specificity provided when using SONAR for data acquisition. The corresponding transitions are shown to be time aligned with the associated precursor ion since they all share the same quadrupole position! Peak areas for the dilution series (5 to 0.0001 µg/mL) are shown as replicates in the lower pane.

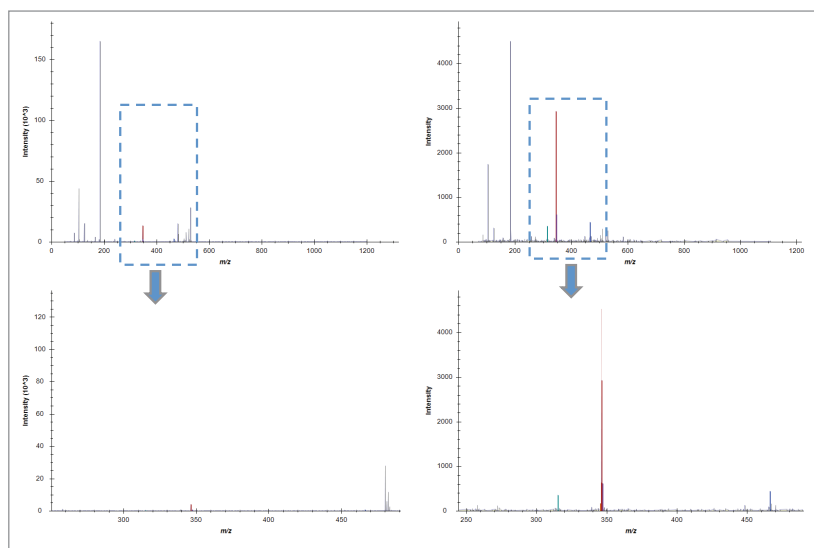


Figure 3. Skyline generated spectra for LPE (18:1) (d7) highlighting the reduction of potential interference effects when applying SONAR generated data to provide cleaner spectra. Full mass range spectra are provided (upper) in addition to a magnified region over the mass range of interest (lower). The number of transitions is also increased with SONAR to include *m/z* 315.32 (green) and 347.33 (purple) in addition to *m/z* 346.32 (brown) and 466.28 (blue).

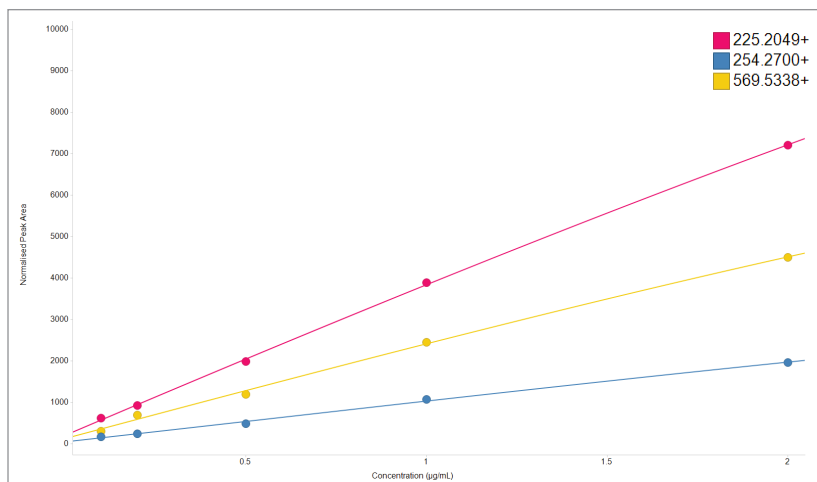


Figure 4. Example quantitative linearity for three representative transitions ( $m/z$  225.20, 254.27, and 569.53) associated with DG (15:0/18:1) (d7)  $[M+H-H_2O]$ . Linearity ( $R^2$  between 0.985 and 0.991) is demonstrated for a dilution range spanning 20-fold with concentrations ranging from 2 to 0.1  $\mu\text{g/mL}$ .

## SUMMARY

This study demonstrates the wide dynamic range capabilities of SONAR with the detection of low level components ( $\text{LOD}=0.001 \mu\text{g/mL}$ ) at high specificity. Interrogation of SONAR data through third party informatics tools such as Skyline, demonstrate a flexible workflow which can be applied to targeted approaches. SONAR is shown to generate qualitative and quantitative data with high selectivity whilst maintaining high duty cycle in order to provide high quantitative accuracy. Data is collected as full scan DIA therefore providing flexibility for data analysis (i.e., the option to quantify using a wide selection of transitions). The concept of SONAR DIA ultimately allows for high throughput analysis and demonstrates its applicability for large cohort studies.

## References

1. A. King, L. Gethings, R. Plumb, I. Wilson, Increased Specificity, Improved Lipidomic Clarity, and Identification Confidence with SONAR. Waters Application Note. [720006036EN](#). 2017.
2. Sarafian et al., Bile Acid Profiling and Quantification in Biofluids using Ultra-Performance Liquid Chromatography Tandem Mass Spectrometry, *Anal. Chem.*, 2015.

# Waters

THE SCIENCE OF WHAT'S POSSIBLE.™

Waters, The Science of What's Possible, ACQUITY, UPLC, Xevo, and SONAR are trademarks of Waters Corporation. All other trademarks are the property of their respective owners.

©2018 Waters Corporation. Produced in the U.S.A. April 2018 720006296EN KP-PDF

Waters Corporation  
34 Maple Street  
Milford, MA 01757 U.S.A.  
T: 1 508 478 2000  
F: 1 508 872 1990  
[www.waters.com](http://www.waters.com)