

# ACCELERATED CLONE SELECTION AND CELL LINE DEVELOPMENT

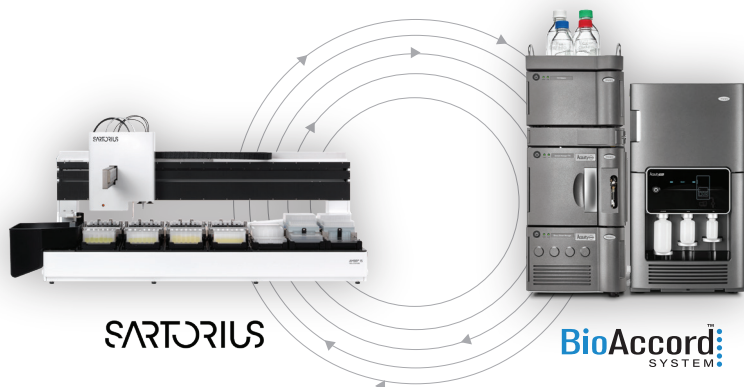
Make decisions faster with  
your own high-quality data

LEARN MORE  
[waters.com/Bioprocessing](https://waters.com/Bioprocessing)



Waters™

Direct measurement of critical process and product attributes increases process understanding, enables faster cell line development, more accurate clone selection and characterization. Save time and money by accelerating your development and drug product release.



### Increase efficiency with fast and simple 2-way data sharing

- 1 Load Ambr sample list to BioAccord
- 2 Analyze and process intact mass data
- 3 Export results to Ambr
- 4 Take decision using Ambr visualization

The Sartorius Ambr® 15 multiple parallel bioreactor systems can now benefit from dedicated workflows and data connectivity to the Waters™ BioAccord LC-MS System. This results in accelerated clone selection and cell line development, maximized drug substance quality and yields, minimized downstream impurities and accelerated development.

- Correlate Process Input and Product Quality Outputs: 200+ media components and critical product attributes such as purity, glycosylation profile and other product modifications on a single platform
- Continuous Product Quality Feedback through faster results: Access leading indicators to make decisions in near-real time
- Rely on the BioAccord LC-MS System: A high throughput, easy to deploy and to operate analyzer for non-expert users with seamless workflows for bioprocess assays

Waters is a trademark of Waters Corporation.  
All other trademarks are the property of their respective owners.

©2023 Waters Corporation. Produced in the U.S.A. June 2023 720007985EN MS-PDF

Waters Corporation  
34 Maple Street  
Milford, MA 01757 U.S.A.  
T: 1 508 478 2000  
F: 1 508 872 1990  
waters.com