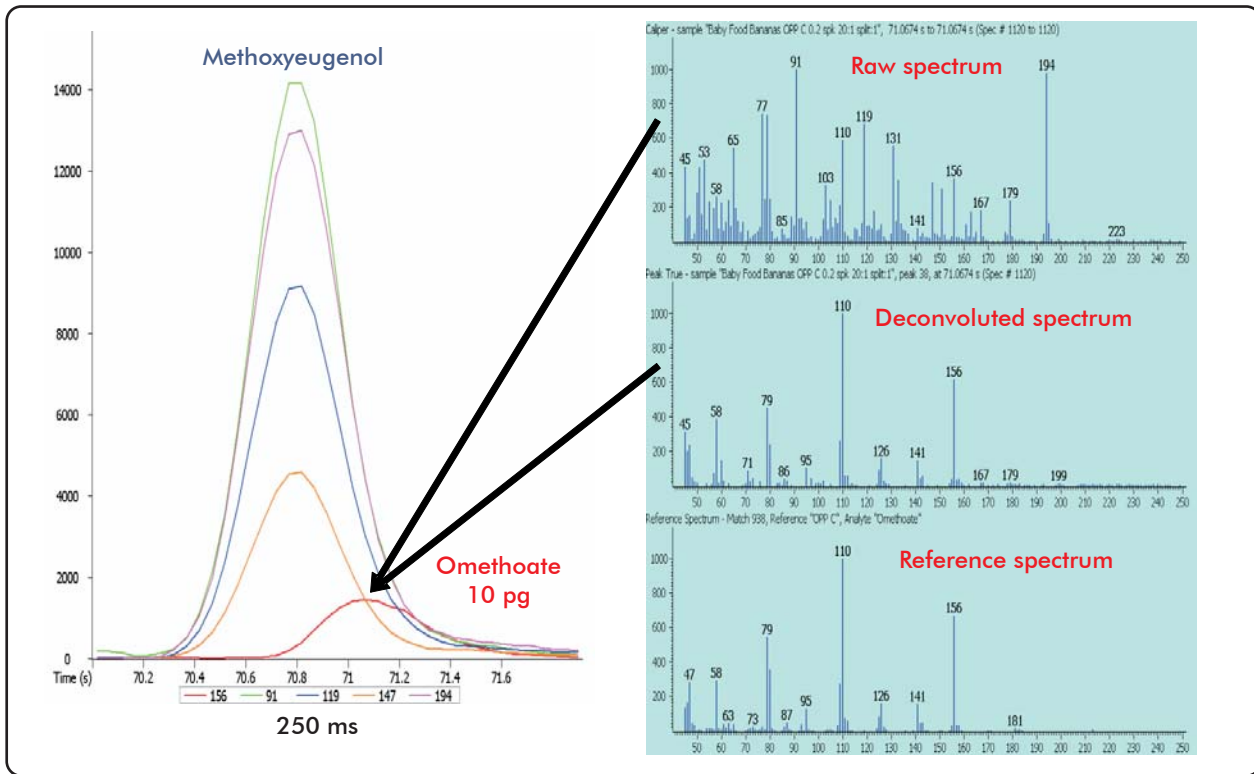


Automatic Detection of Omethoate in Baby Food Bananas

Life Science and Chemical Analysis Centre
LECO Corporation, Saint Joseph, Michigan USA



Omethoate detected in baby food bananas and clearly identified despite coelution with methoxyeugenol.

Column:

5 m x 0.18 mm x 0.18 μ m Restek RTx-XLB

TOFMS:

45 to 550 m/z @ 20 spectra/s

For questions on this analysis e-mail us at:
life_science@leco.com

For a complete listing of snapshots and application notes visit us on the web at www.leco.com

