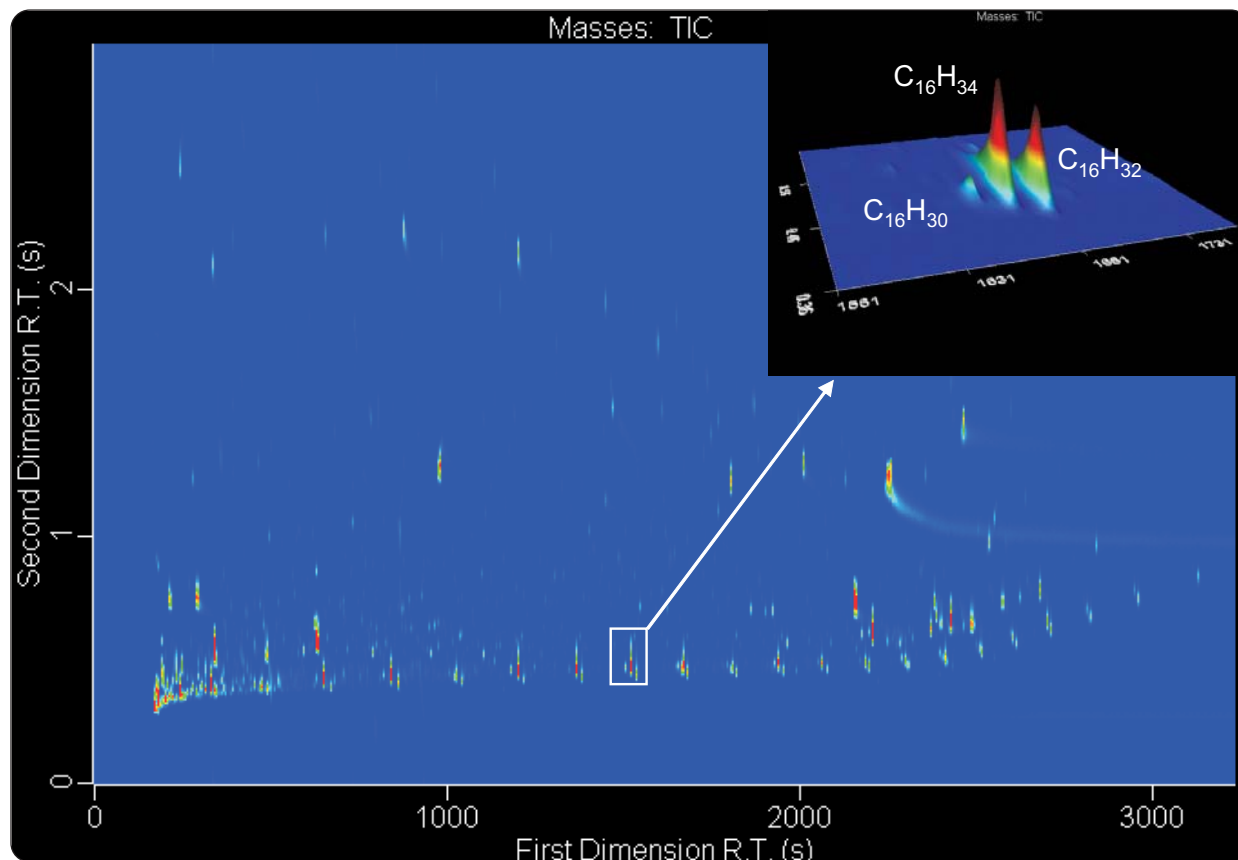


Analysis of Cosmetics by GCxGC-TOFMS

Life Science and Chemical Analysis Centre
LECO Corporation, Saint Joseph, Michigan USA



Total Ion Chromatogram (TIC) of a mascara sample shown as a contour plot. The inset, shown as a surface plot, shows the detail of the n-C16 hydrocarbons.

Columns:

30 m x 0.25 mm x 0.25 μm Rtx-1ms
1 m x 0.10 mm x 0.10 μm DB-Wax

TOFMS:

35 to 400 m/z @ 200 spectra/s

For questions on this analysis
e-mail us at: life_science@leco.com

For a complete listing of snapshots
and application notes visit us on the
web at www.leco.com



Application Snapshot

LECO