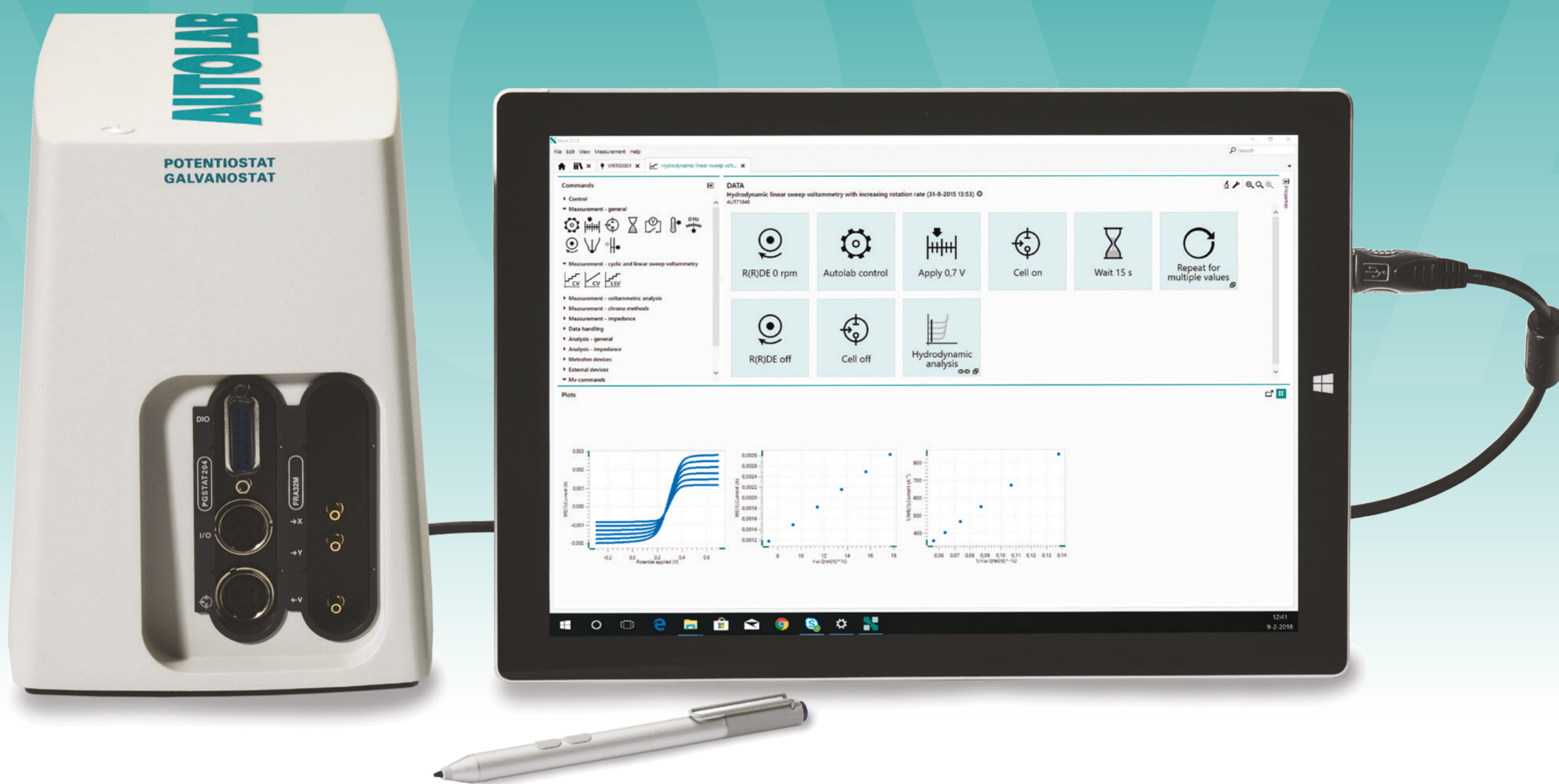




# #KnowNOVA

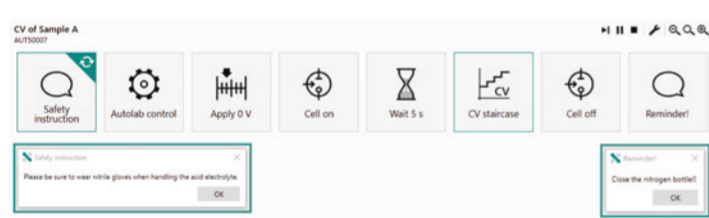


#KnowNOVA

## Message box

**Do you forget to close the gas cylinder at the end of the measurement?**

Or maybe you want to advise your student during their experiment? NOVA's message box command lets you add notes to a procedure at any stage. Know more about your experiment, know NOVA.

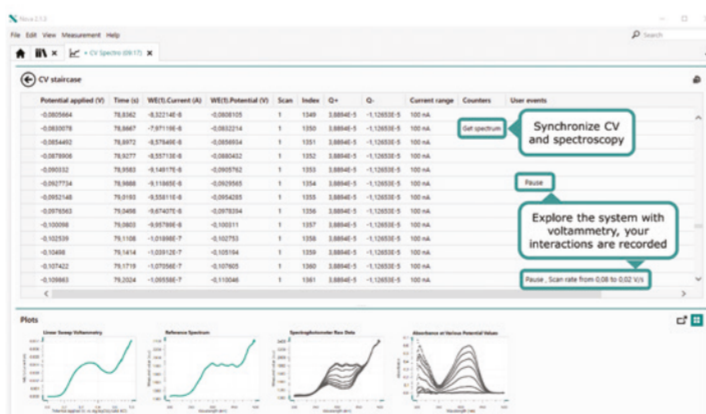


#KnowNOVA

## Events logging

**Do you want to know exactly what happened during your measurement?**

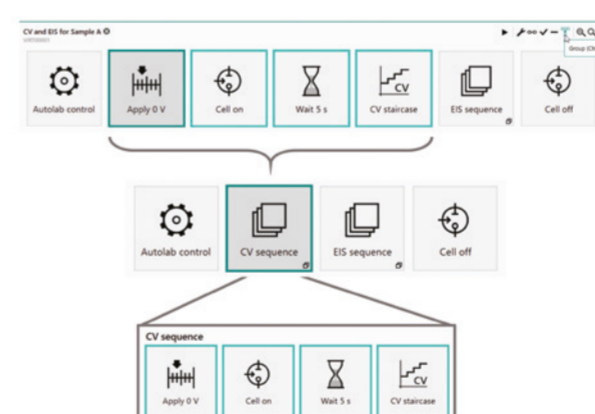
NOVA logs events like cutoffs, triggers, current overloads, and even your manual interactions with the measurement data in the data grid.



#KnowNOVA

## Grouping

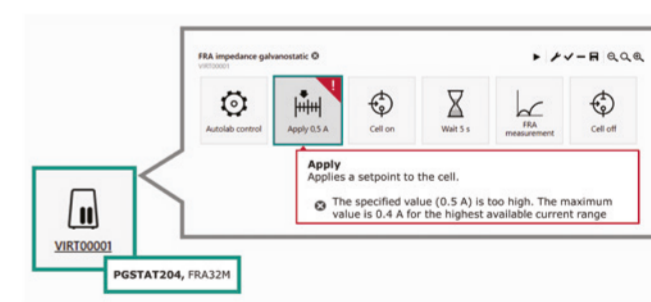
**Do you love to keep your procedure tidy?** NOVA's grouping functionality lets you keep commands together in the procedure view under any heading that you like. Use hot key "CTRL + G" with the command tiles selected to quickly create a group.



#KnowNOVA

## Virtual Instrument

**Do you want to configure your procedure from outside of the lab,** with confidence that it will run on your Autolab instrument? The Virtual Instrument of NOVA allows you to setup mock instrument with all of the modules matching your own set up. Your procedure will be validated before you start buttoning up your lab coat. Know what to expect, know NOVA.



## Want to #KnowNOVA?



### Check out

YouTube/MetrohmAutolab for a range of helpful NOVA 2 videos.

### Subscribe

to be notified when a new video is uploaded.



### Discover

Metrohm Autolab's range of specialist application notes check out our Application Finder.

[www.metrohm.com/applications](http://www.metrohm.com/applications)



### Share

your experiences, images, plots on social media using

#KnowNOVA

Dedicated to research

[www.metrohm.com/electrochemistry](http://www.metrohm.com/electrochemistry)

