

875 KF Gas Analyzer



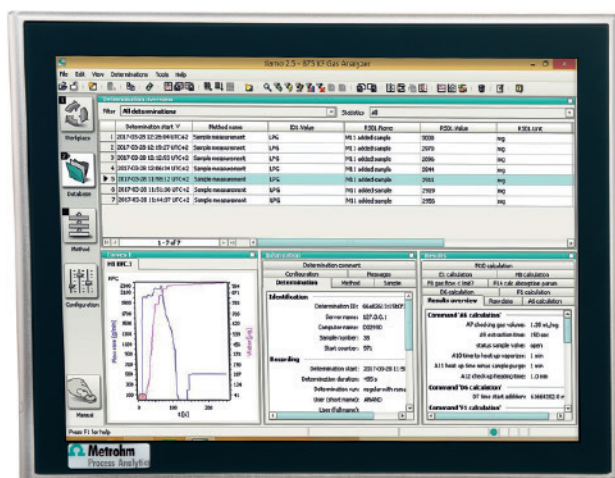
Straightforward determination of water content
in liquefied and permanent gases

A fully automated solution for one of your most critical applications!

02

Accurate, reproducible results at the touch of a screen: The 875 Karl Fischer Gas Analyzer is a fully automated solution for reliable water determination in liquefied and permanent gases. It com-

bines the inherent benefits of coulometric Karl Fischer titration with a robust sampling system that meets the need for safety and convenience of routine users in the oil and gas industry.



Example applications

Use the 875 KF Gas Analyzer to perform routine analysis of the following gases (list not complete)

- Propane, propene, liquefied petroleum gas (LPG), butane, butadiene, isobutene
- Dimethyl ether (DME)
- Chlorinated hydrocarbons: methyl chloride (chloromethane), ethyl chloride (chloroethane), vinyl chloride
- Refrigerants and propellants: various chlorofluorocarbons (CFCs), hydrofluorocarbons (HFCs), hydrochlorofluorocarbons (HCFCs), and perfluorocarbons (PFCs)



Key features & benefits

Uncompromising safety

- Robust shelter with strict separation of the gas handling system from the electronics
- Can handle gas pressure of up to 40 bar
- Inlet filter protects the system from particles providing for a long system life
- Everything at a glance: The optional touch screen can be installed right on the device

Complete Automation

- No manual intervention necessary thanks to automatically controlled solenoid valves
- After the measurement is before the measurement: The system conditions itself with dry nitrogen after each measurement and is immediately ready for the next sample
- Optional 20 mL buret for simple, fully automated change of reagent
- Predefined methods in *tiamo*TM for straightforward operation

Accurate and reproducible results

- Integrated high-end Metrohm coulometer for direct and accurate water determination
- Reproducible results due to precise sampling by means of mass flow controller
- Optional 20 mL buret for simple and semi-automatic cleaning of the system through guided cleaning steps to prevent carry-over

Versatile use

- Besides measuring liquefied gases, you can use the coulometer as a standard system and measure liquids via direct injection.

Optional further automation

Equipment for automatic reagent change and methanol addition

Due to the constant gas flow through the coulometric titration cell, methanol evaporates and must be replaced regularly. This optionally available set contains everything to automate this methanol addition as well as complete refilling of the coulometric titration cell.

System rinsing equipment

Samples with higher boiling impurities, with oil residues, or with a tendency to polymerisation may accumulate in the system. With this optionally available set, these can be easily flushed out of the system. A method guides the user through the individual steps to bring the system back to its original state.

Ordering Information

Instrument

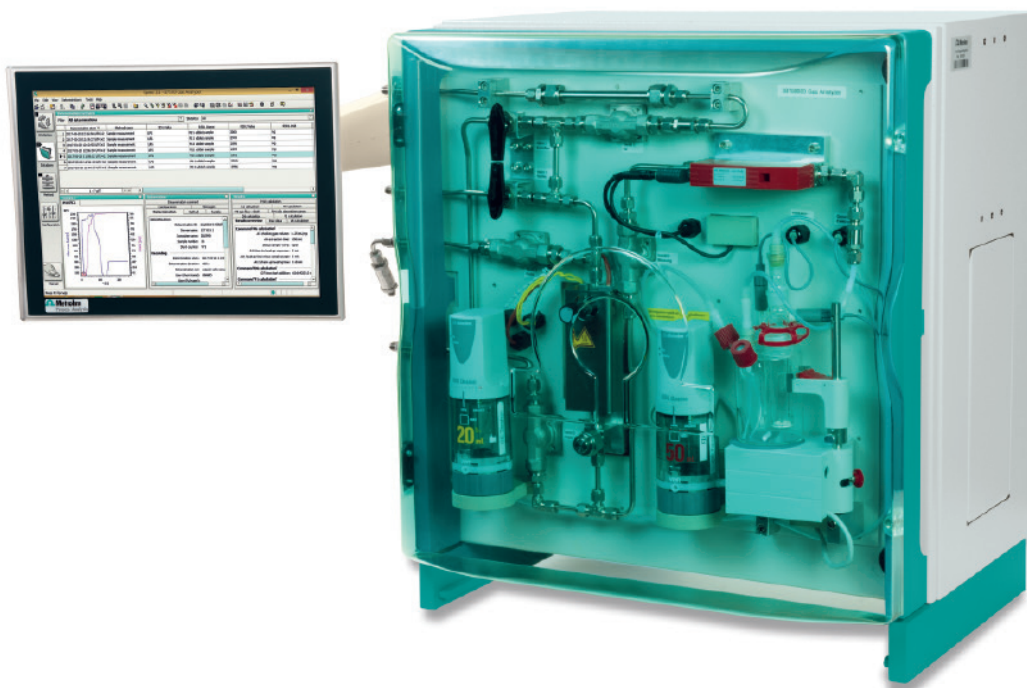
2.875.9050 875 KF Gas Analyzer (incl. *tiamo*[™], monitor and keyboard not included)

Optional accessories

6.7209.000 Accessories for reagent exchange and methanol addition

6.7209.010 Accessories for rinsing with solvent

6.7209.200 TFT-touch monitor (to be mounted on the instrument)



www.metrohm.com

 **Metrohm**