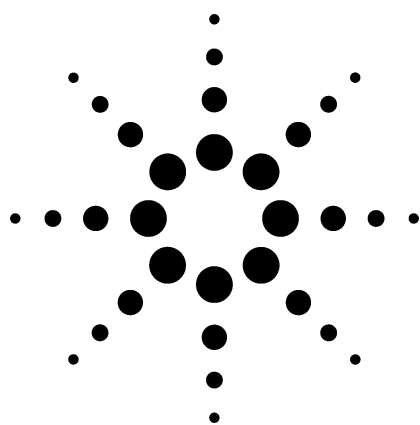


# Application 253-00

## Agilent Refinery Analyzer

Oxygenates in Butane Feed Stocks, Gasoline, Naphtha

### Technical Overview

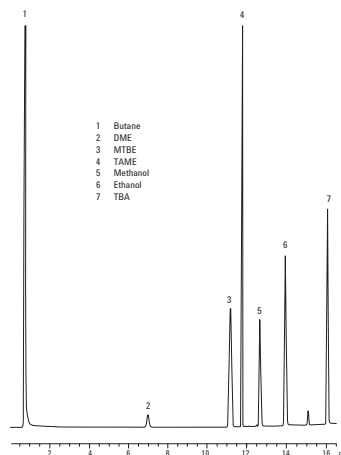
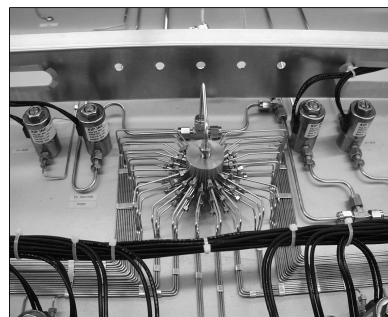


### Application Highlights

- A single Flame Ionization Detector (FID) to detect the following components to a lower detection limit of 1 ppm:

Dimethyl ether (DME)  
Ethyl-tert-butyl ether (ETBE)  
Diisopropyl-ether (DIPE)/methyl tert-butyl ether (MTBE) - (composite)  
sec-butyl-methyl ether (SBME)  
tert-amylmethyl ether (TAME)  
Methanol  
Acetone  
Ethanol  
t-butanol/sec-butanol (composite)

- Analysis time: approximately 15 minutes



### Optional Configurations

- Refinery gas analysis with trace sulfurs by SCD
- Additional boiling point column for the analysis of heavy hydrocarbons (C1-C30)
- Standard analysis with the addition of trace CO by methanizer
- Custom analyzer for performing ASTM D2163, ASTM D2712, and ISO 7941
- High temperature injection for heavy fractions
- High temperature reactor effluent with percent level water
- TCD/TCD/MSD for the analysis of reactor effluent gases

### For More Information

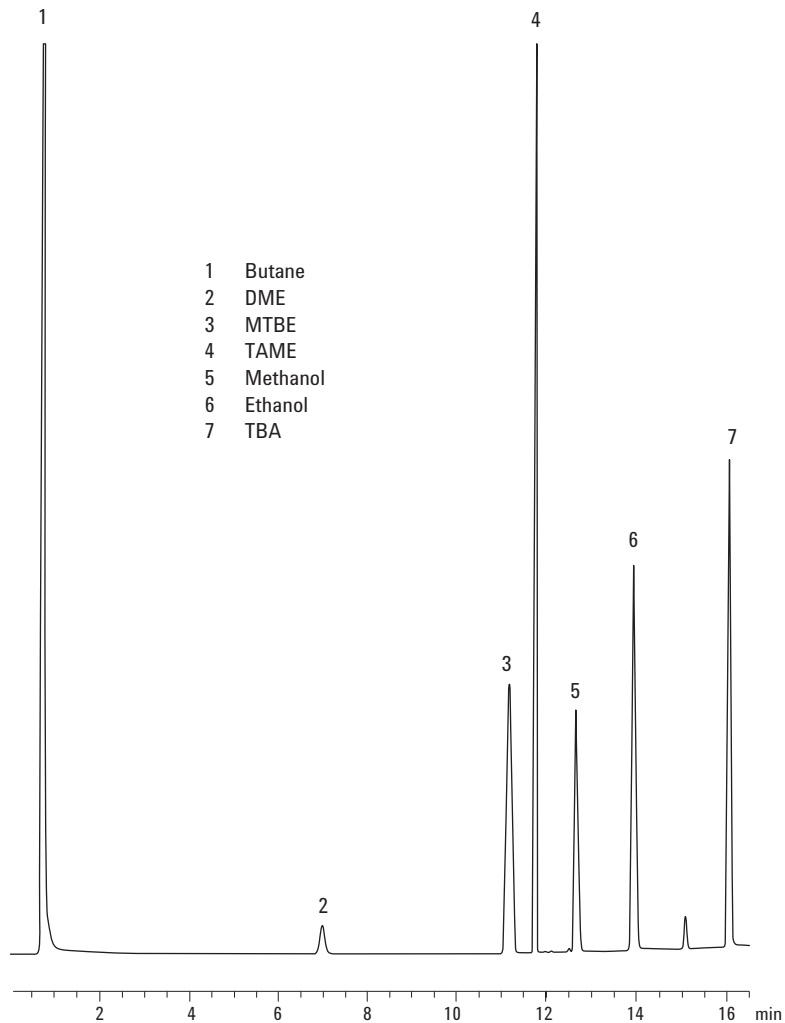
For more information on our products and services, visit our Web site at [www.agilent.com/chem](http://www.agilent.com/chem).



Agilent Technologies



WASSON·ECE  
INSTRUMENTATION



FID output from the Agilent refinery analyzer.

Agilent shall not be liable for errors contained herein or for incidental or consequential damages in connection with the furnishing, performance, or use of this material.

Information, descriptions, and specifications in this publication are subject to change without notice.

© Agilent Technologies, Inc. 2002

Printed in the USA  
December 3, 2002  
5988-6732EN