

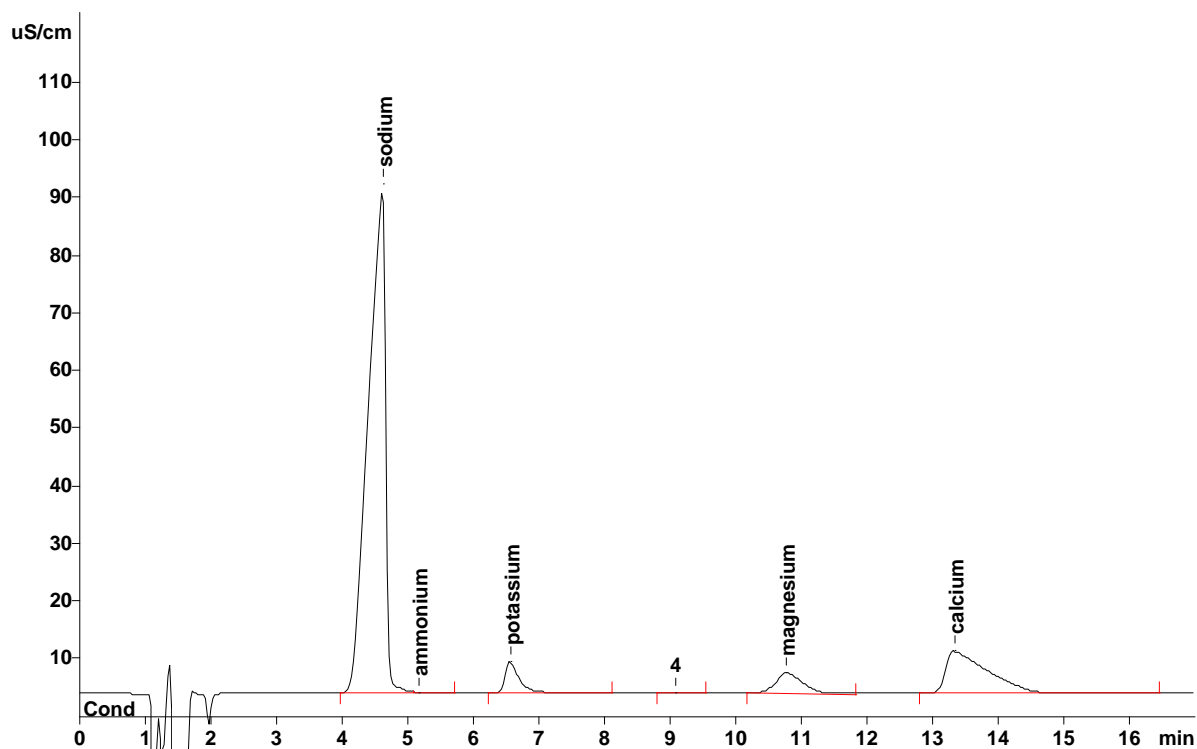
# IC Application Note No. C-67

**Title:** Cations in grapefruit soft drink using inline dialysis

**Summary:** Determination of sodium, ammonium, potassium, calcium and magnesium in a grapefruit soft drink using cation chromatography with direct conductivity detection after advanced dialysis as inline sample preparation.

**Sample:** Grapefruit soft drink  
**Sample Preparation:** –

**Column:** 6.1010.220 Metrosep C 2 – 150  
**Eluent:** 2.5 mmol/L nitric acid, 5% acetonitrile  
**Flow:** 1.0 mL/min  
**Injection Volume:** 20 µL after inline dialysis



<b>Results:</b>	Sodium mg/L	Ammonium mg/L	Potassium mg/L	Magnesium mg/L	Calcium mg/L
	<b>274.1</b>	<b>&lt; 0.1</b>	<b>26.7</b>	<b>9.78</b>	<b>52.0</b>