

IC Application Note No. C-93

Title: Four amines besides standard cations with preconcentration

Summary: Determination of traces of methylamine, isopropylamine, diethylethanolamine and diethylamine besides lithium, sodium, ammonium, potassium, magnesium and calcium using cation chromatography with direct conductivity detection.

Sample: Standard solution

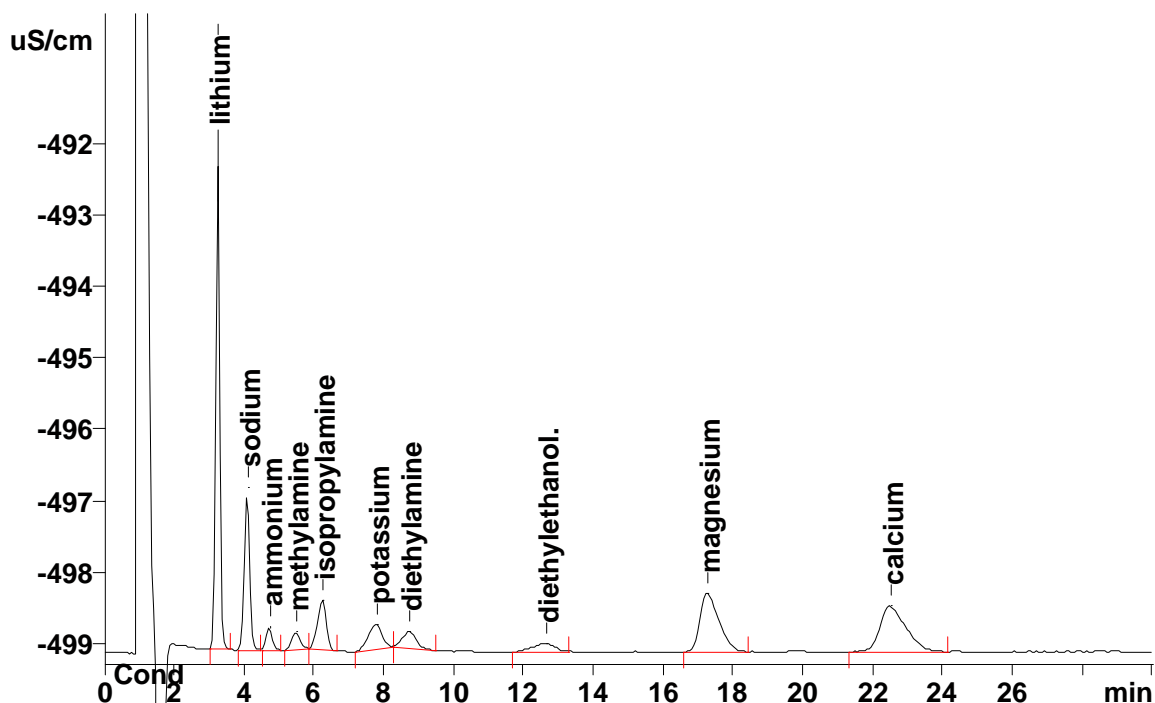
Sample Preparation:

Column: 6.1010.210 Metrosep C 2 – 100
6.1010.310 Metrosep C PCC 1 HC (preconcentration)

Eluent: 1.5 mmol/L nitric acid, 0.2 mmol/L 18-crown-6, 3% acetone

Flow: 1.0 mL/min

Injection Volume: 3 mL preconcentrated



Results:	Amines µg/L	Standard cations
	10	n.q.