

IC Application Note No. N-65

Title: Borate in borate effluent

Summary: Determination of borate in a borate effluent applying anion chromatography with direct conductivity detection.

Sample: Borate effluent

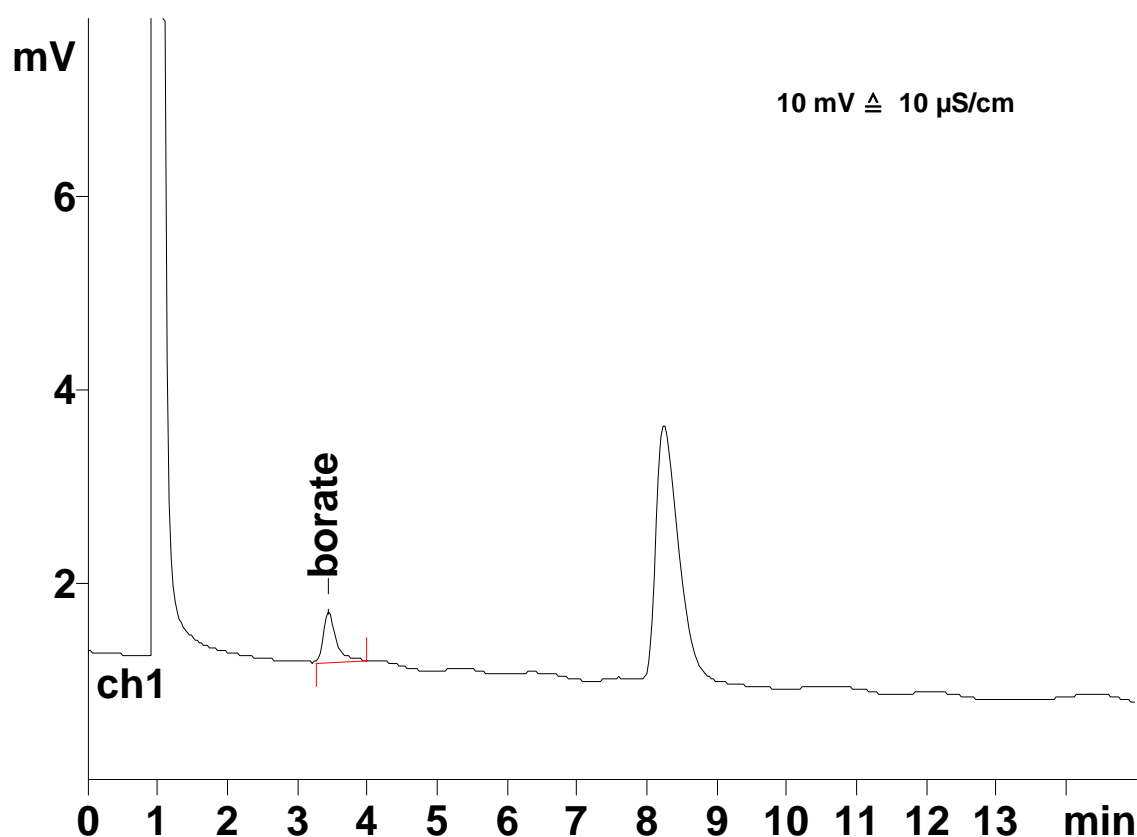
Sample Preparation: Dilution 1 : 500 with ultrapure water

Column: 6.1005.000 Hamilton PRP X-100

Eluent: 3.2 mmol/L sodium hydroxide
0.5 mmol/L sodium carbonate

Flow: 1.0 mL/min

Injection Volume: 10 μ L



Results:	Borate mg/L
	279.7

See AN S-222 for the determination of the other anions in the same sample.