



## Agilent ADM Flow Meter PC Connection

### User Guide

Introduction	2
View and Download a Digital COC	3
Red Cargo Online Access	5
Install the Red Cargo Agent and USB Driver	7
Connecting your Flow Meter to Red Cargo	11
Stream the Flow Data	17
Upgrade the Firmware	18



## Introduction

### Overview

This manual provides instructions on several common tasks involving your flow meter. These tasks include downloading a digital COC, updating your flow meter's firmware, and connecting your flow meter to the Red Cargo web platform.

For more information about your ADM Flow Meter, please refer to the *Agilent G6691A ADM Flow Meter Operating Instructions*.

If you need system assistance, or if you have suggestions, contact the Agilent Technologies, Inc. Support at [redcargo.support@agilent.com](mailto:redcargo.support@agilent.com)

### System requirements

Agilent recommends using the latest available version of the Mozilla Firefox web browser to access the Red Cargo web platform.

Windows 7, 8, 8.1, or 10, 32-bit or 64-bit is required for the Red Cargo software to communicate with the flow meter instruments through USB connectivity.

Adobe Reader is required to view the Certificates of Calibration that are downloaded from the Red Cargo website.

To stream data from your flow meter to your computer, third party terminal emulation software, such as PuTTY or HyperTerminal, is required.

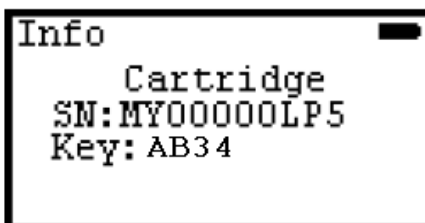
## View and Download a Digital COC

Each Agilent ADM Flow Meter comes equipped with a removable cartridge. These cartridges each come with a Certificate of Calibration (COC), which is generated when the cartridge is manufactured. This certificate gives details about the instruments that were used to calibrate the cartridge, and provides a verification table showing the flow readings obtained in the factory compared to Agilent's flow standard. If the COC is lost, or a digital copy is required, a copy may be downloaded using Agilent's Red Cargo Web Interface (see "To download the COC:" ).

To download your cartridge's COC, you must know the serial number and product key of your instrument's cartridge.

### To view your cartridge's serial number and product key:

- 1 Turn on your ADM flow meter.
- 2 Press the **mode** button until the **Info** screen is visible.
- 3 Press the **select** button to view the serial number and product key, as shown in [Figure 1](#).



**Figure 1** Serial number and product key display from the instrument

### To download the COC:

- 1 Use your web browser to open the Access product features page, go to <https://redcargo.azurewebsites.net/>
- 2 Click **ADM Flowmeter Customer**.
- 3 Enter the model number (G6692A), serial number, and product key of your cartridge, and click **Validate** (see [Figure 2](#) on page 4). The cartridge's details, and the link to download the COC will be displayed under Certificate of Calibration (see [Figure 3](#) on page 4).

**Access product features**

Note: You may refer to the ADM Flow Meter Operating Manual to obtain the Serial Number and Product Key from the instrument.

Cartridge  
SN: MY00000LP5  
Key: AB34

Product Model Number      Product Serial Number      Product Key

[Validate](#)

**Figure 2** Access product features page

**Access product features**

Product Model Number      Product Serial Number      Product Key

G6692A      MY17010043      3B3B

**Certificate of Calibration**

Serial Number	MY17010043	<a href="#">Download</a>
Date of Calibration	01/17/2017	

**Register New Account**

First Name

Last Name

Email

[Register](#)

**Figure 3** Access product features page

**4** Click **Download**.

## Red Cargo Online Access

### Register or update your Red Cargo account

Register a Red Cargo account to access more features related to the instrument, such as performing a firmware upgrade.

Once a Red Cargo account is registered, the username or email address may be updated as needed.

#### To register a new account or update an existing account:

- 1 Use your web browser to open the Access product features page, go to <https://redcargo.azurewebsites.net/>
- 2 Click **ADM Flowmeter Customer**.
- 3 Enter the model number (G6692A), serial number, and product key of your cartridge, and click **Validate** (see [Figure 2](#) on page 4).
- 4 Enter the user's first name, last name, and email address.
- 5 Click **Register** (see [Figure 3](#) on page 4). When the account is approved, an email will be sent to the email address you provided with your account password.  
If your cartridge's serial number has been previously linked to a Red Cargo account, you can update the ownership by entering a different name and email address, and clicking **Update** (see [Figure 4](#)).

The screenshot displays the 'Access product features' page. At the top, there are three input fields for 'Product Model Number' (G6692A), 'Product Serial Number' (MY17010043), and 'Product Key' (3B3B). Below these is a 'Certificate of Calibration' section with a table containing 'Serial Number' (MY17010043) and 'Date of Calibration' (01/17/2017), and a 'Download' button. The bottom section, 'Register New Account', is highlighted with a red border and contains three input fields: 'First Name' (John), 'Last Name' (Doe), and 'Email' (johndoe@customer.com), with an 'Update' button at the bottom right.

**Figure 4** Access product features page

## Sign into to your Red Cargo Account

- 1 From your web browser, go to <https://redcargo.azurewebsites.net>.
- 2 Click **Start Connect** (see Figure 5).
- 3 Enter your **Username** and **Password**.
- 4 Click **Sign In**.

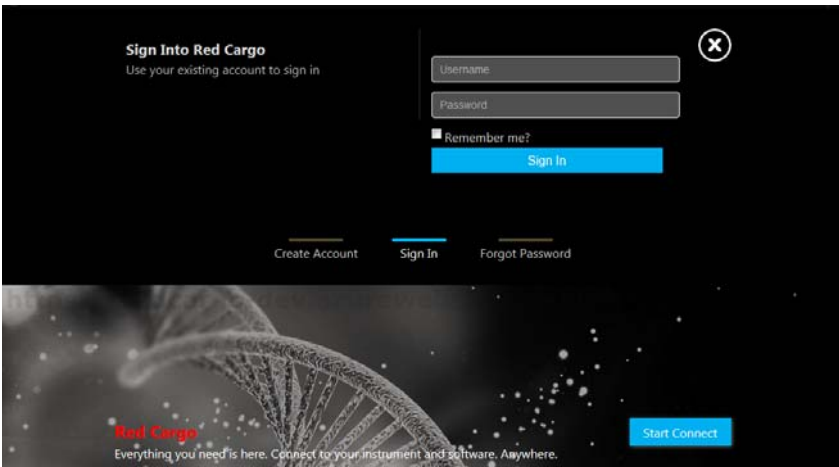


Figure 5 Red Cargo sign in window

## Install the Red Cargo Agent and USB Driver

To use your ADM flow meter with the online features provided by Red Cargo, you will need to download and install the Red Cargo Agent and the USB Driver. The USB Driver allows your PC to connect to the flow meter and the Red Cargo Agent allows the driver to communicate with the web based interface.

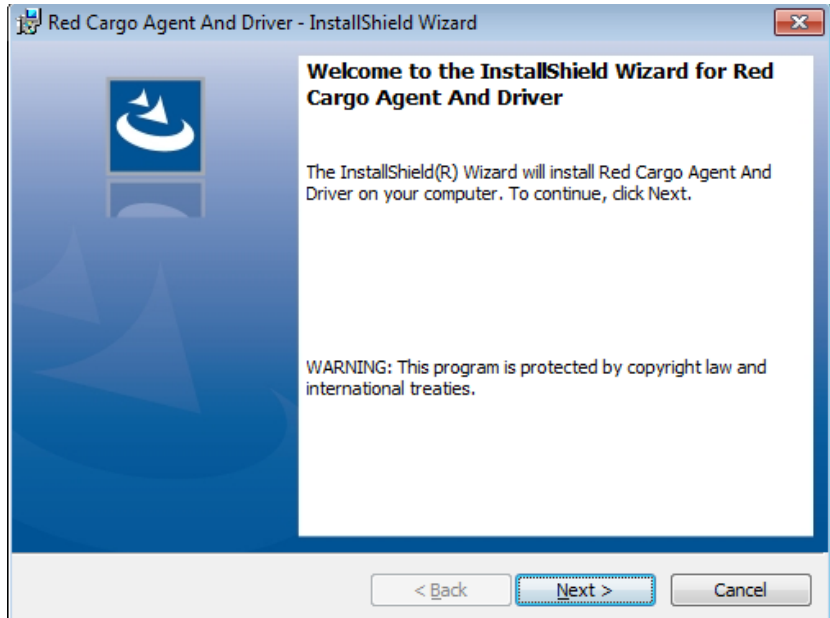
### To install the Red Cargo Agent and USB Driver:

- 1 Sign into your Red Cargo account. See “[Sign into to your Red Cargo Account](#)” on page 6. If you have not installed the Red Cargo Agent and Driver previously, or if either is out of date, you will be prompted to download the agent.

Refer to *Red Cargo Agent and Driver Setup Installation* for more information.

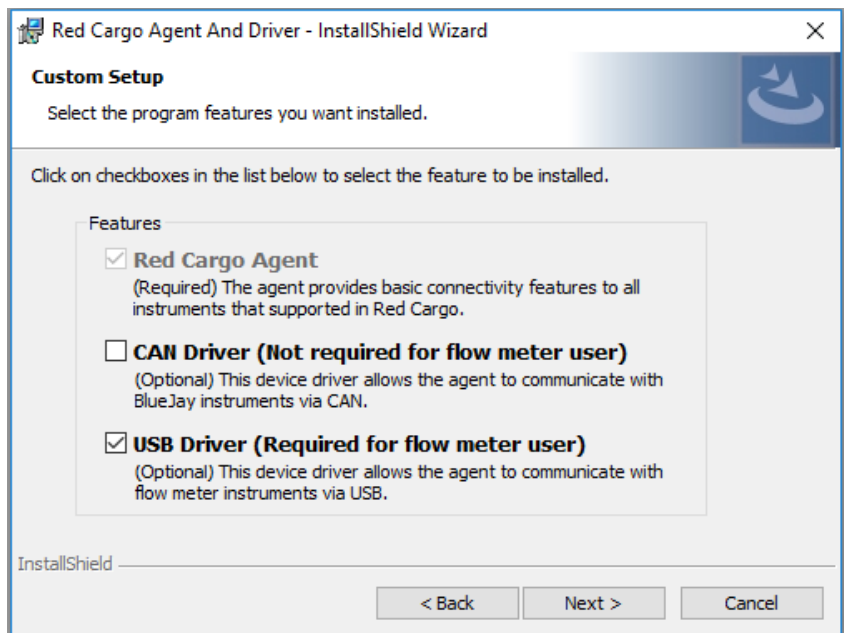
- 2 If you are not prompted to download the agent, it may be downloaded directly from <https://redcargocloud.blob.core.windows.net/public/Red%20Cargo%20Agent%20and%20Driver%20Setup.exe>.
- 3 Run **Red Cargo Agent and Driver Setup.exe**.

- From the **Welcome** page, Click **Next** to proceed with the installation.  
To terminate the installation at any time throughout the installation, click **Cancel**.



**Figure 6** Welcome page

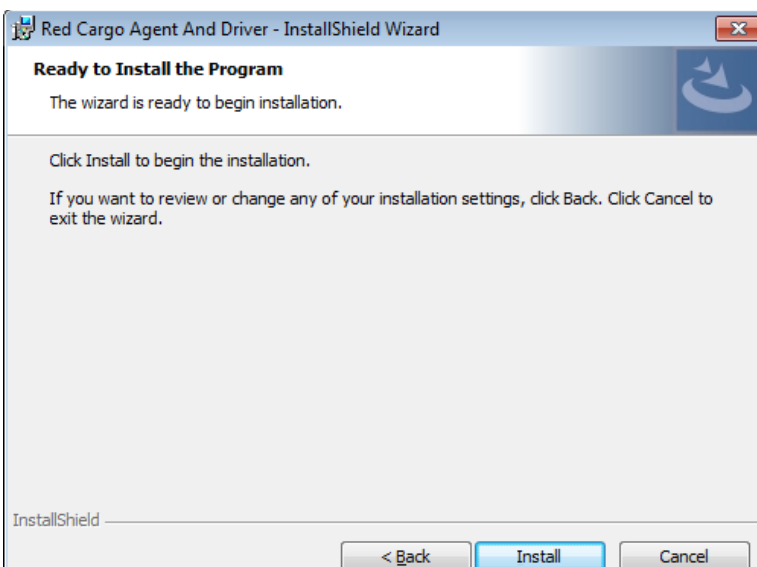
- In the **Custom Setup** page, select **USB Driver**, and click **Next** (see [Figure 7](#)).



**Figure 7** Custom Setup page

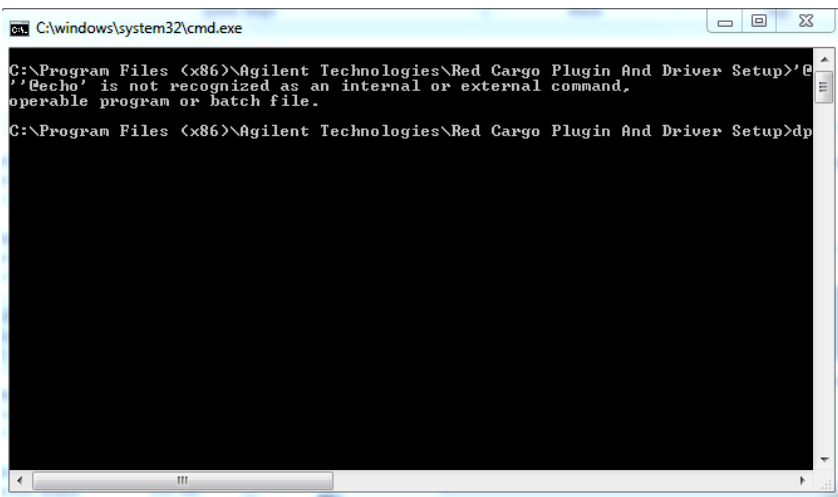


6 Click **Install** (see [Figure 8](#)).



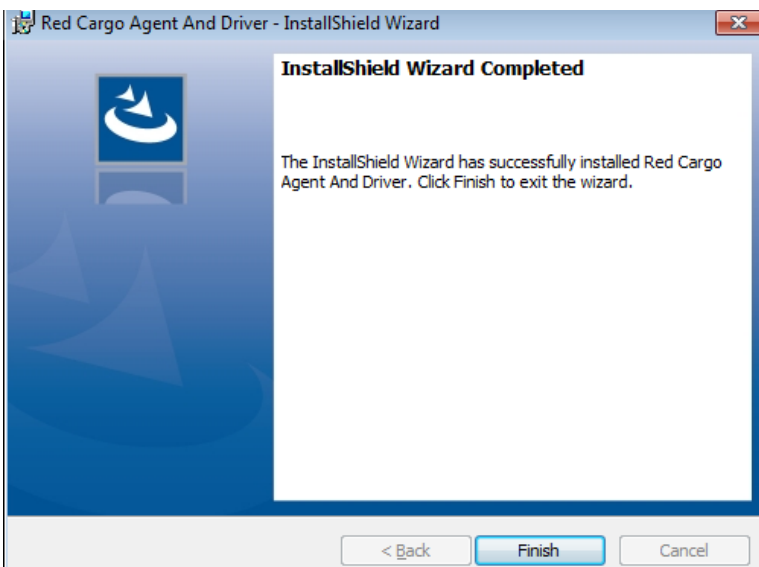
**Figure 8** Ready to Install the Program page

A command prompt window will appear, and the USB driver will be installed (see [Figure 9](#)). The command prompt window will close once the installation of the USB driver is complete.



**Figure 9** Command prompt window

- 7 Once the installation is complete, click **Finish** (see [Figure 10](#)).



**Figure 10** InstallShield Wizard complete page

- 8 Refresh the browser after you have installed the Red Cargo Agent.

## Connecting your Flow Meter to Red Cargo

The Red Cargo Web Interface allows the instrument's firmware to be updated.

### Add an instrument to Red Cargo

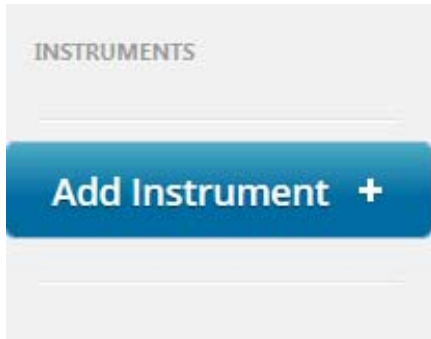
- 1 Connect the flow meter using the USB cable.



**Figure 11** ADM flow meter USB port

- 2 Power on the flow meter.
- 3 Sign into your Red Cargo account. See [“Sign into to your Red Cargo Account”](#) on page 6.

- 4 Click **Add Instrument** in the instruments column (see [Figure 12](#)). The add instrument window will appear on the left side of the page (see [Figure 13](#) on page 13.)



**Figure 12** Add Instrument button

- 5 You can give your flow meter a nickname by entering a name into the **Display Name** field (see [Figure 13](#) on page 13). This is useful if you have more than one flow meter.
- 6 Click **Online**.
- 7 Select the **Flowmeter Virtual COM Port** option from the **Com Port** drop down menu.
- 8 Click **Add Instrument**.

The screenshot shows a window titled "Add Instrument" with a close button (X) in the top right corner. The window contains the following elements:

- Select a type of instrument:** A dark grey button labeled "ADM Flow Meter".
- Display Name:** A text input field containing "Instrument - 1".
- Select a connectivity type:** A dark grey button labeled "Serial COM".
- Com Port:** A dropdown menu showing "Flowmeter Virtual COM Port (...)" with a downward arrow.
- Online/Offline:** Two buttons, "Online" (highlighted in dark grey) and "Offline" (light grey).
- Status:** The text "Agent is connected" is displayed below the buttons.
- Action:** A large blue button labeled "Add Instrument" at the bottom.

**Figure 13** Add Instrument window

## View an instrument's status

The status panel appears in the Red Cargo web client when a flow meter is connected. The panel displays the following attributes (see [Figure 14](#)):

- Instrument Status
- COM Port
- Model
- Serial Number
- Firmware Version



**Figure 14** ADM flow meter status panel

## Edit an instrument's settings

### To change an instrument's COM Port and Display Name:

- 1 Select the instrument to be edited from the list in the instruments column.
- 2 Hover over the selected instrument in the instrument column, and click on the cogwheel icon (see [Figure 15](#) on page 15).



**Figure 15** Edit Instrument button

- 3 Fill out the fields in the Edit Instrument dialog, and click **Save Instrument** (see [Figure 16](#) on page 16).

## Delete an instrument

### CAUTION

Once an instrument is deleted, all data associated with it cannot be recovered.

---

In the **Edit Instrument** panel, click on the recycle bin icon (see [Figure 16](#) on page 16).

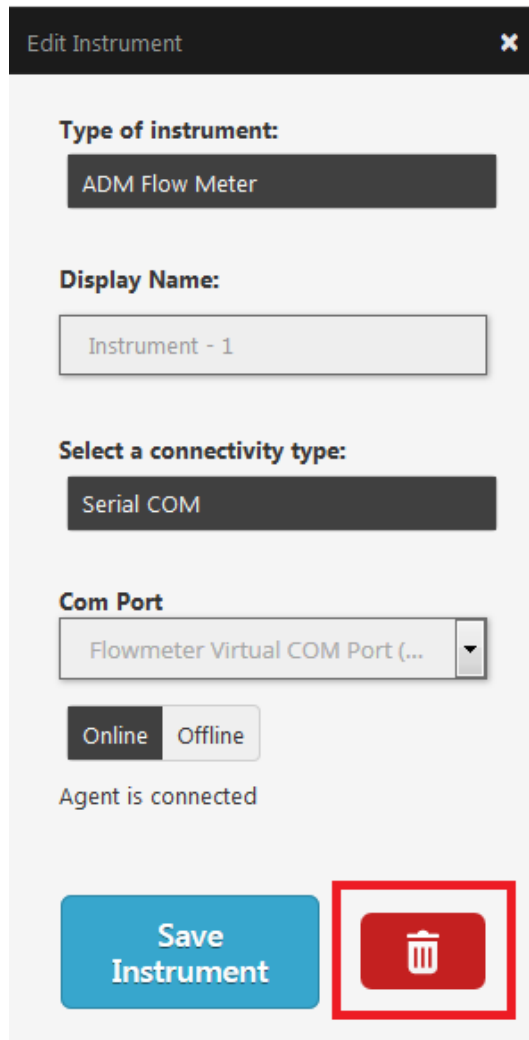


Figure 16 Edit Instrument window



## Stream the Flow Data

The USB driver installed in “[Install the Red Cargo Agent and USB Driver](#)” on page 7 can be used to stream real-time flow measurements to a terminal emulation program of your choosing. Red Cargo does not support data acquisition at this time.

### To begin streaming:

- 1 Install and setup your preferred terminal emulation software, such as PuTTY or HyperTerminal. Connect to the same virtual com port used by the flow meter.
- 2 Connect the flow meter using the USB cable.
- 3 Power on the flow meter.
- 4 Run your preferred terminal emulation software.
- 5 Begin operating your flow meter. The flow rate data will automatically stream, and matches the mode shown on the instrument's screen.



**Figure 17** ADM flow meter USB port

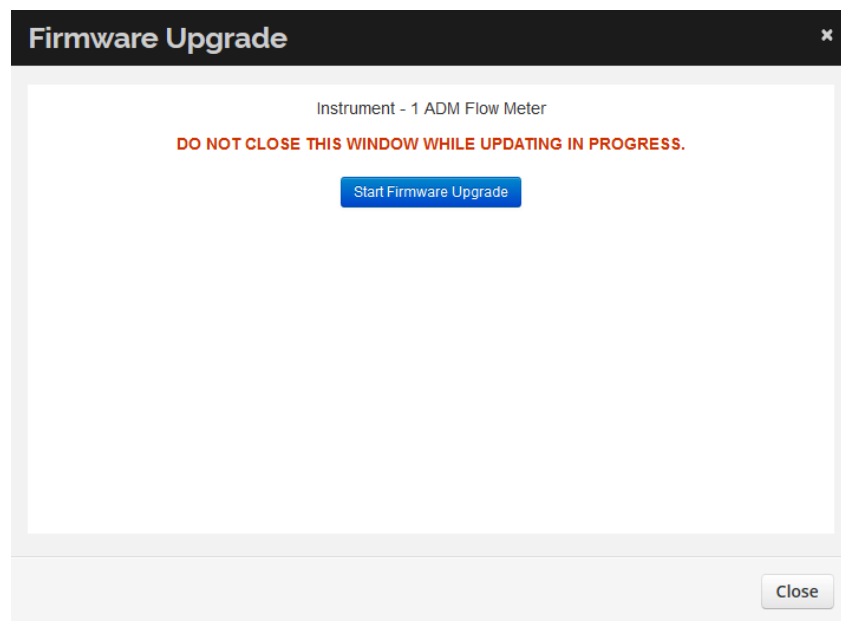
## Upgrade the Firmware

- 1 View the instrument status. See “[View an instrument’s status](#)” on page 14. If a newer firmware version is available, an upgrade button is displayed. Hover your mouse over this button to see which version will be installed.
- 2 Click **Upgrade** (see [Figure 18](#) on page 18).



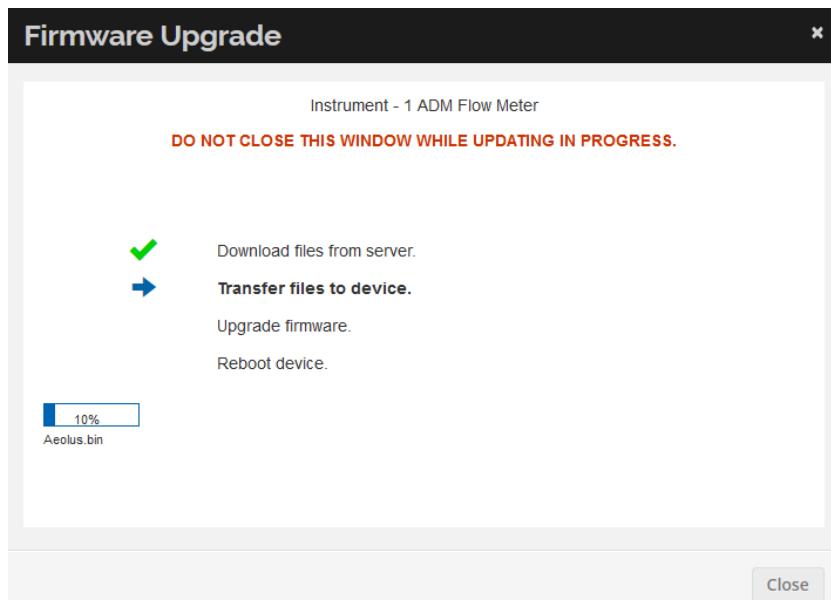
**Figure 18** Firmware Upgrade button

- 3 Click **Start Firmware Upgrade** (see [Figure 19](#)).



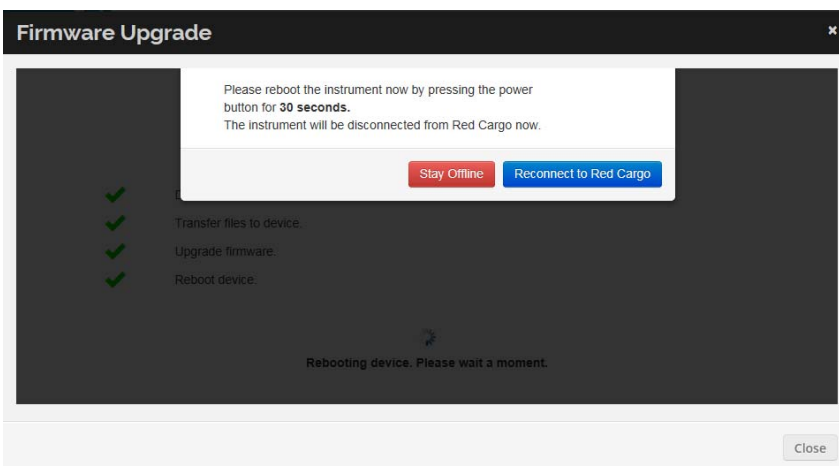
**Figure 19** Firmware upgrade window

The firmware upgrade process may take several minutes. Closing the browser or the firmware upgrade window will interrupt the upgrade process (see [Figure 20](#)).



**Figure 20** Firmware Upgrade in progress

- 4 When the message shown in [Figure 21](#) appears, reboot the flow meter by pressing the **Power** button for 30 seconds.



**Figure 21** Reboot instrument prompt

- 5 Close the message by selecting **Stay Offline** or **Reconnect to Red Cargo**.







### **Warranty**

**The material contained in this document is provided "as is," and is subject to being changed, without notice, in future editions. Further, to the maximum extent permitted by applicable law, Agilent disclaims all warranties, either express or implied, with regard to this manual and any information contained herein, including but not limited to the implied warranties of merchantability and fitness for a particular purpose. Agilent shall not be liable for errors or for incidental or consequential damages in connection with the furnishing, use, or performance of this document or of any information contained herein. Should Agilent and the user have a separate written agreement with warranty terms covering the material in this document that conflict with these terms, the warranty terms in the separate agreement shall control.**

© Agilent Technologies, Inc. 2017  
Printed in USA  
First edition, May 2017



**G6691-90006**