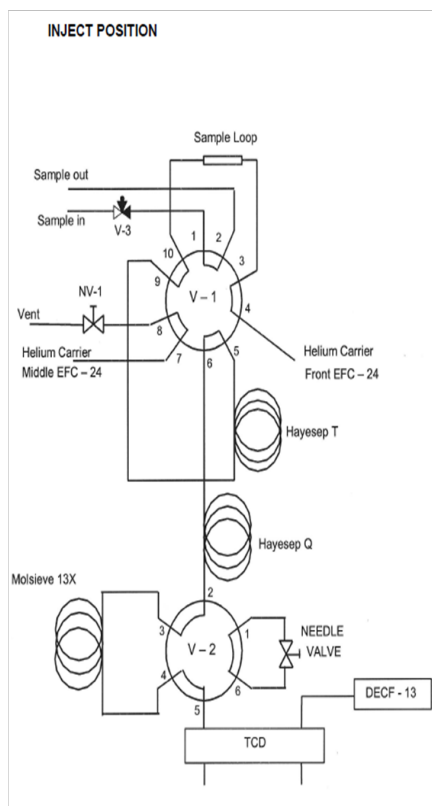
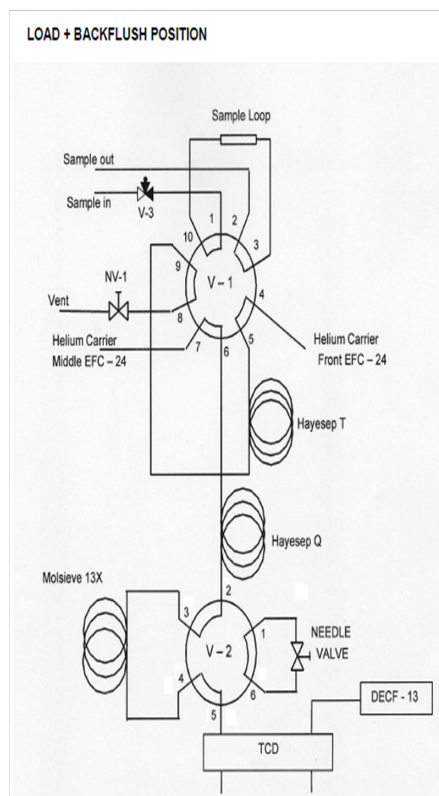


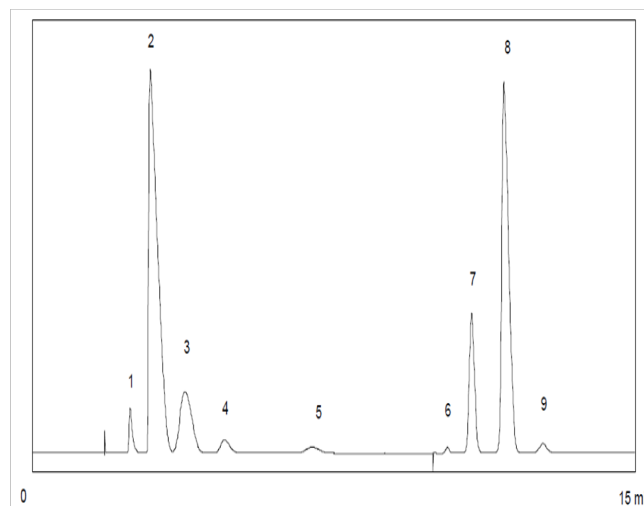
Permanent Gas Analyzer - Quick Reference Guide

Permanent Gas Analyzer

The Permanent Gases Analyzer is a standard turnkey solution to permanent gas analysis. The analyzer is suited for the analysis of all gases up to Propane in various matrices. The Analyzer can be based on several different GC chassis. By using highly advanced columns the analyzer separates Oxygen, Nitrogen, Carbon monoxide, Carbon dioxide, Methane, Hydrogen-sulfide and the C2 isomers, Ethane, Ethylene and Acetylene in various matrices.



Refinery gas sample



Peak identification:

- 1 Carbon dioxide
- 2 Ethylene
- 3 Ethane
- 4 Acetylene
- 5 Hydrogen sulfide
- 6 Oxygen
- 7 Nitrogen
- 8 Methane
- 9 Carbon monoxide

Conclusions

Permanent Gas Analyzer:

- The Analysis is completely automated.
- No Costly method development.
- Full range detection capability.
- Simple set-up for easy operation/maintenance and service.

ChromSolutions Ltd

What we offer at ChromSolutions is our wealth of experience in analytical instrumentation, (over 110 years distributed through the members of our company). We use this experience and independent advice to provide clear concise guidance for analyzer purchase and training on operation.

For more information on Analyzers please contact us:

