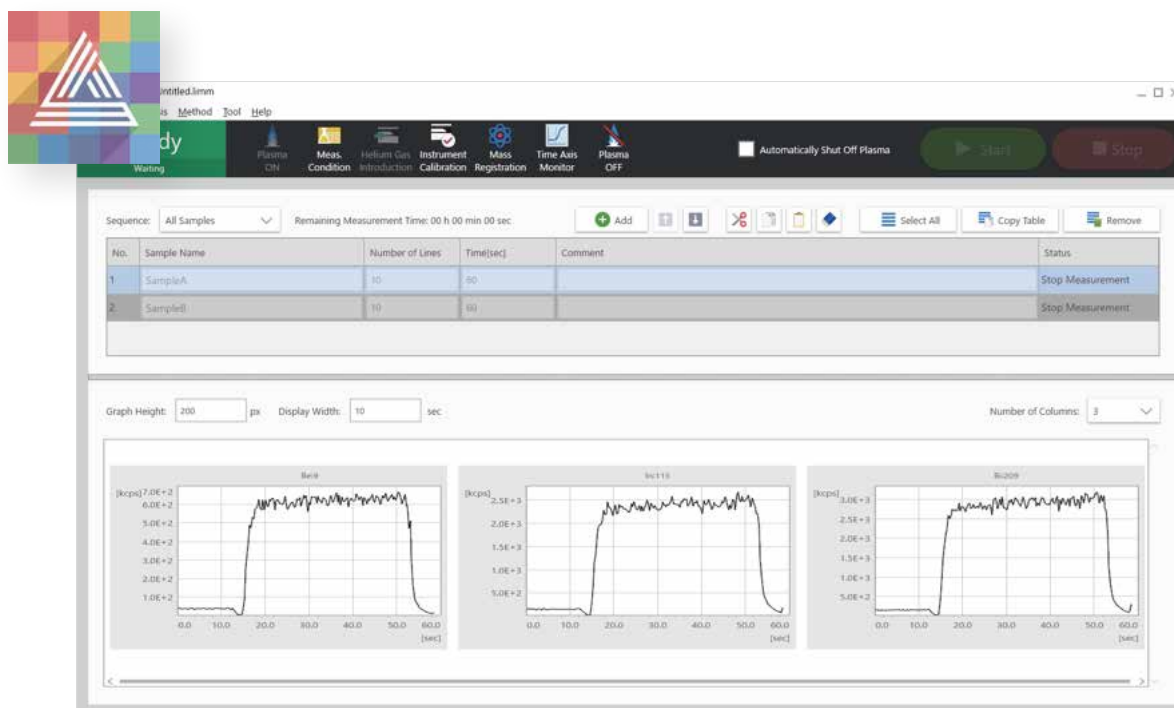


ICP Mass Spectrometer ICPMS Series

LA-ICP-MS Software



By combining this software with Shimadzu ICPMS Series Systems connected to a laser ablation instrument, sample measurement and data output in a format compatible with imaging data analysis software are possible.



Batch registration of line scan information

The sample information can be entered using the image of the irradiation area (Number of lines x irradiation time) set by the laser ablation instrument. Reduce the time and effort required to enter information to 1/10 or less*.

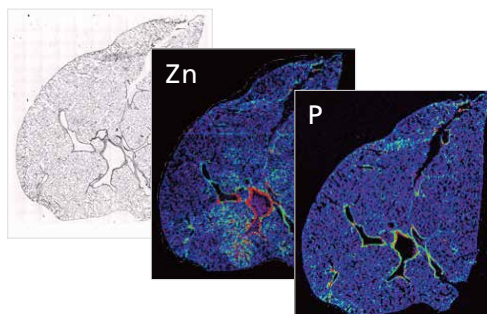
*When 10 or more lines are registered

Supports imdx format

The data of the output imdx format can be read as it is by Shimadzu Mass Spectrometry Imaging Data Analysis Software IMAGEREVEAL™ MS. You can start the analysis immediately without converting the data.

Data output per sample

The acquired data is output as one data file per sample. Prevents missing or mixed data when multiple line data are selected and output.



Sample Information Input Method Specialized for Imaging

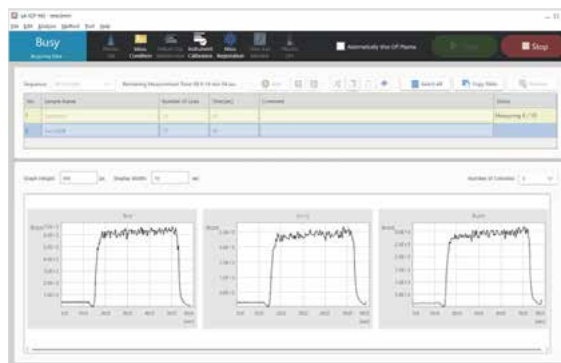
Batch registration of line scan information

LA-ICP-MS imaging is a collection of laser irradiation lines. In the past, information for each line had to be entered into the ICP-MS. "LA-ICP-MS Software" uses a 1-sample input method to reduce the time and effort required to input information. You can enter up to 10,000 lines of information on just 1 line.

Data output per sample

In order to analyze the imaging data, it is necessary to output the data for each sample. The Shimadzu LA-ICP-MS Software outputs one data file each time the measurement of one sample is completed. Unlike conventional software, it is not necessary to select and output line data after measurement.

Measurement information is also included in the data file, making it easier to manage the data and preventing human error such as mixing of data measured under different conditions.



Main Window

Mass Spectrometry Imaging Data Analysis Software IMAGEREVEAL MS

Supports imdx format

Since the data is output in the data format imdx of Mass Spectrometry Imaging Data Analysis Software IMAGEREVEAL MS, it can be opened directly by IMAGEREVEAL MS and the analysis work can be started immediately. You don't need to convert data or create your own software to read data. It is also easy to combine the organic images of the MALDI TOF MS and iMScope series with the inorganic images of the LA-ICP-MS.

LA-ICP-MS Software Specifications

Compatible ICP-MS	ICPMS-2040/2050 Series and ICPMS-2030 Series
Compatible OS	Compatible OS: Windows® 11 Pro, Windows® 10 Pro (64-bit edition) ver. 1809 or later, Windows® Enterprise LTSC 2019 64-bit <ul style="list-style-type: none">ICPMS-2040/2050 Series: LabSolutions™ ICPMS (ver. 2.04 or later) must be installed.ICPMS-2030 Series: LabSolutions ICPMS (ver. 1.40 or later) must be installed.Cannot be installed in a LabSolutions DB/CS environment.
Display resolution	1920 × 1080 pixels or better
Compatible Laser Ablation Instrument	Elemental Scientific Lasers ESL213, imageBIO266 Teledyne Photon Machines LSX-213 G2+
Measurement conditions	Maximum number of elements: ICPMS-2040/2050 30 elements and masses ICPMS-2030 15 elements and masses Maximum number of samples: 50 samples Maximum number of lines: 10,000
Available data formats	imdx format (.imdx) — This format can be read by IMAGEREVEAL MS (ver. 1.30 or later). Iolite format (.csv) — Data in CSV format can be read by Iolite software. Shimadzu CSV format (.csv) — This is the general-purpose CSV format.

IMAGEREVEAL and LabSolutions are trademarks of Shimadzu Corporation.
Windows is either a registered trademark or a trademark of Microsoft Corporation in the United States and/or other countries.



Shimadzu Corporation
www.shimadzu.com/an/

For Research Use Only. Not for use in diagnostic procedures.

This publication may contain references to products that are not available in your country. Please contact us to check the availability of these products in your country.
Company names, products/service names and logos used in this publication are trademarks and trade names of Shimadzu Corporation, its subsidiaries or its affiliates, whether or not they are used with trademark symbol "TM" or "®".
Third-party trademarks and trade names may be used in this publication to refer to either the entities or their products/services, whether or not they are used with trademark symbol "TM" or "®".
Shimadzu disclaims any proprietary interest in trademarks and trade names other than its own.

The contents of this publication are provided to you "as is" without warranty of any kind, and are subject to change without notice. Shimadzu does not assume any responsibility or liability for any damage, whether direct or indirect, relating to the use of this publication.