

## SendCom.exe – Description

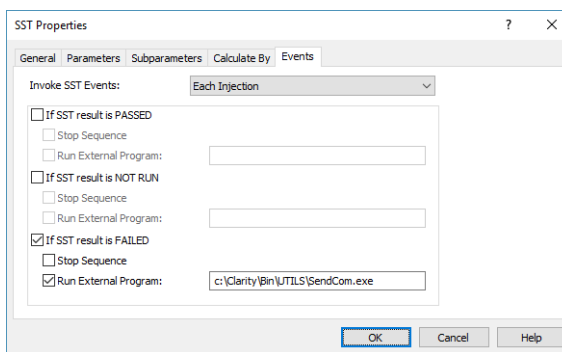
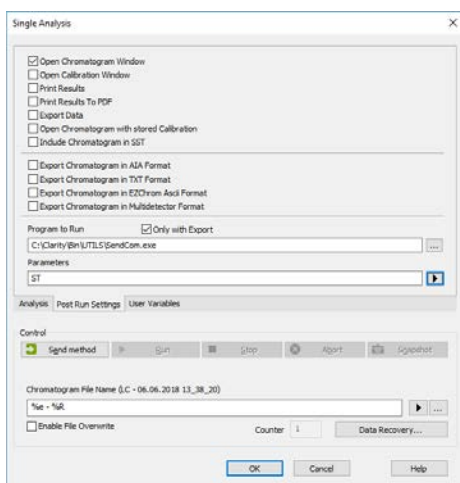
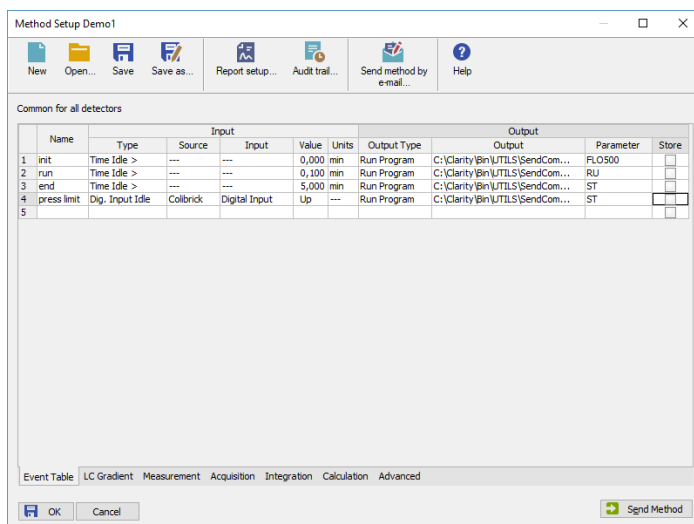
The SendCom.exe is a software utility that enables basic control of certain devices such as HPLC pumps, detectors, and switching valves using *RS232 serial line communication* from Clarity. It enables to send simple text commands to the selected device, using the communications settings specified in the SendCom.ini file (C:\Clarity\CFG).

SendCom.exe can be found in the UTILS subfolder either on the Clarity installation USB or in the C:\Clarity\BIN\UTILS folder after installation. SendCom.exe first searches for the SendCom.ini file in the C:\Clarity\CFG (default location) and when it does not find it there, then it searches next to the SendCom.exe location.

### Using the SendCom in Clarity

The SendCom.exe can be called within Clarity from:

- **Method Setup – Event Table** dialog: during the acquisition run from a line in the Event Table,
- **Single Analysis dialog Post Run Settings** tab: at end of the run
- **SST Properties – Events** dialog: based on the SST result at the end of the acquisition run during the sequence.



To start the SendCom based on the SST Result, the optional SST Extension (p/n A22) for System Suitability Check must be purchased.

Further information about SST Extension can be found at: <http://www.dataapex.com/products/extensions-sst.php>

The SendCom program opens the communication port, sends the parameters and then closes the port again. It does not check whether the communication was successful or whether the command was accepted and performed by the device.

### SendCom parameters

The string entered to the Ext. Parameters field is limited to 255 characters and it will be sent to the device as it is. See the device documentation for required syntax and command timings. Some devices can accept several commands from a single line, others will ignore commands until the preceding one is completed.

Initialization file is located in C:\Clarity\Cfg\ (by default)

The *SendCom.ini* is a simple editable file, containing following parameters:

```
[SendCom]

PORT = 1                specifies the port
SPEED = 9600           used baud rate
BYTESIZE = 8           bytesize

PARITY = 0             parity (according to the options in the list)
; NOPARITY = 0
; ODDPARITY = 1
; EVENPARITY = 2
; MARKPARITY = 3
; SPACEPARITY = 4

STOPBITS = 0           stop bits (according to the options in the list)
; ONESTOPBIT = 0
; ONE5STOPBITS = 1
; TWOSTOPBITS = 2

ADD_CR=0              end command by carriage return (0 = no, 1 = yes)
ADD_LF=0              end command by line feed (0 = no, 1 = yes)
```

### Controlling multiple devices

When it is necessary to control multiple devices, create a copy of SendCom.exe and SendCom.ini in a separate subfolder for each device. For example like this:

- C:\Clarity\CFG\SendCom1
  - C:\Clarity\CFG\SendCom1\SendCom.exe
  - C:\Clarity\CFG\SendCom1\SendCom.ini
- C:\Clarity\CFG\SendCom2
  - C:\Clarity\CFG\SendCom2\SendCom.exe
  - C:\Clarity\CFG\SendCom2\SendCom.ini

In Clarity make sure to use correct SendCom.exe. In the aforementioned example each SendCom.exe will use SendCom.ini from the corresponding subfolder.