

## Empower PLUS Data Management

Improving and managing the availability of your chromatography results

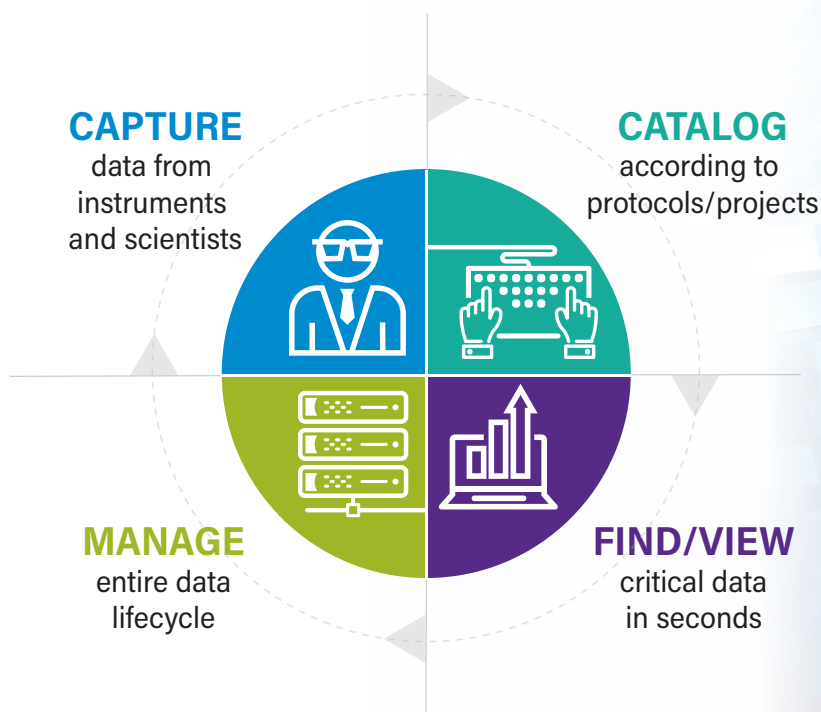
### THE POWER OF AUTOMATED COMPLIANCE-READY CDS AND DATA MANAGEMENT

Empower™ PLUS Data Management (DM) automatically captures, secures, accesses, and distributes information from a wide variety of analytical technologies.

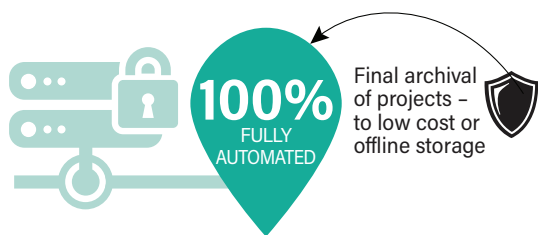
- Eliminate the need for manual data archival and retrieval from computerized laboratory data systems
- Improve information management, sharing, and reusing of laboratory reports
- Increase productivity of system administrators, data reviewers, and data archive for end users beyond Empower Enterprise
- Find information quickly, whenever you need it
- Automatically capture and index Empower audit trails

### EMPOWER PLUS DATA MANAGEMENT OFFERS:

- Empower Enterprise CDS solutions with SDMS archiving capability in a single server
- Automated project archiving capabilities to manage your data footprint
- Advanced archive logic to adapt to your business practices and manage the data lifecycle
- Archive Empower workstations' data from a central solution



## AUTOMATE THE ARCHIVAL PROCESS

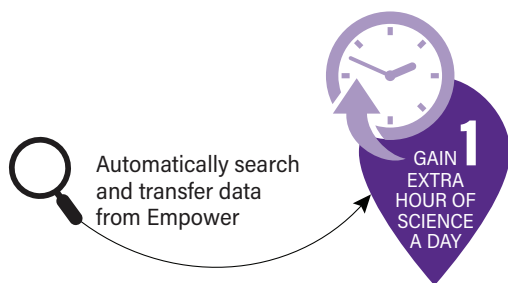


Final archival of projects – to low cost or offline storage

How long chromatographic data is required for analysis and/or re-analysis typically determines how long it should remain active on your Empower server. Do you need to actively process or review results for days, months or even years?

With Empower PLUS DM, you are able to simultaneously manage your data footprint and maximize server performance. This is done by automating the process of archiving inactive projects to a searchable archive.

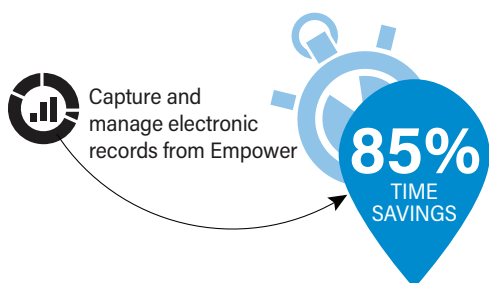
## CAPTURE AND INDEX EMPOWER PROJECTS AND AUDIT TRAIL



Automatically search and transfer data from Empower

During the archival process, Empower PLUS DM scans all Empower projects and data types. It automatically extracts key information from projects and samples, then builds an indexed database catalog that can be quickly searched.

## RESTORE DATA FROM THE ARCHIVE



Capture and manage electronic records from Empower

In addition to the sophisticated and automated archive and retrieval capabilities available with Empower PLUS DM, it can improve the flow of information throughout your global scientific organization.

## WATERS GLOBAL SERVICES

### Delivering world renowned services and support

Waters Service and Support offerings are tailored to optimize your laboratory productivity while addressing your budget realities. Our offerings help maintain system peak performance, minimize down time, address scientific application challenges, and support stringent compliance requirements. As your services and support provider, we are committed to the success of your laboratory and business.

Waters quality support and consultative services ensure your success wherever your laboratory is located in the world.



Waters has consecutively earned the ACE Award since 2001 for providing best-in-class technical knowledge, issue resolution, and process support.

# Waters

THE SCIENCE OF WHAT'S POSSIBLE.™

Waters, The Science of What's Possible, and Empower are trademarks of Waters Corporation. All other trademarks are the property of their respective owners.

©2018 Waters Corporation. Produced in the U.S.A. July 2018 720006345EN LM-PDF

Waters Corporation  
34 Maple Street  
Milford, MA 01757 U.S.A.  
T: 1 508 478 2000  
F: 1 508 872 1990  
www.waters.com