

Agilent Enrichment and Desorption Unit Coupling to Micro GC

EDU Quick Start Guide



This Quick Start guide describes how the Enrichment and Desorption Unit (EDU) is coupled to the Agilent 490 Micro GC. For more information about the EDU or 490 Micro GC refer to the corresponding user manuals.

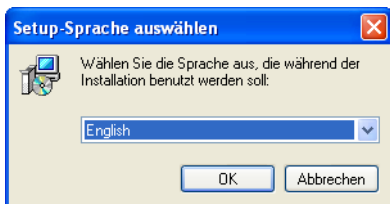


Agilent Enrichment and Desorption Unit Coupling to Micro GC

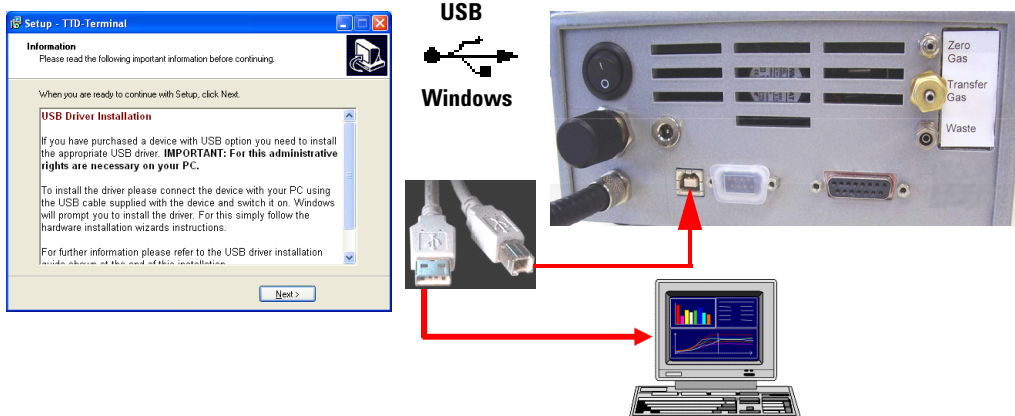
1 Insert the installation CD.



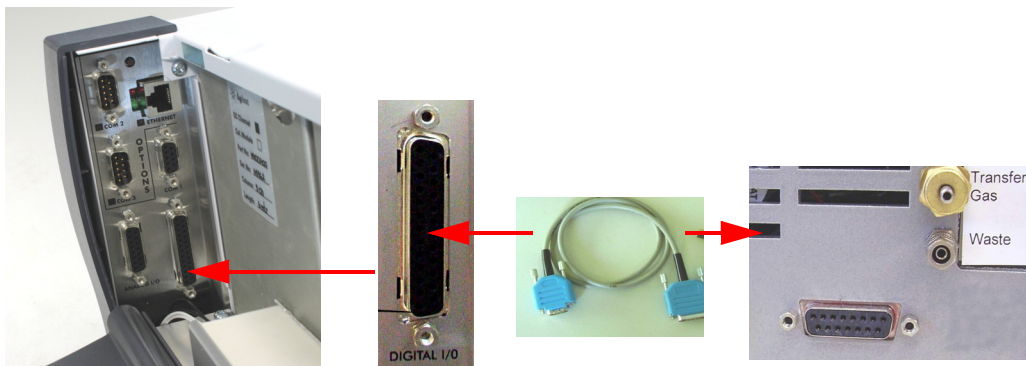
2 Run **setup.exe**, select a language, and follow the setup instructions.



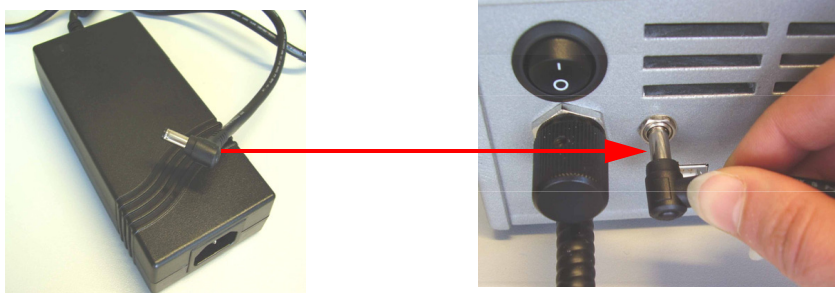
3 Follow the setup program to install the USB interface.



4 Connect the digital interface.



5 Connect the external power supply (15 VDS).

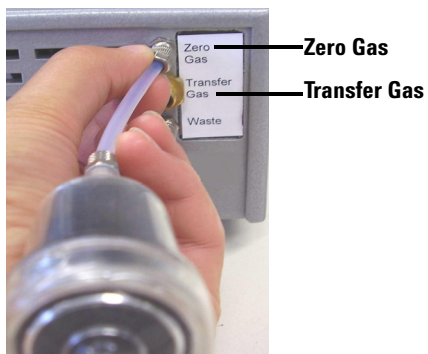


6 Connect the Sample In Line.

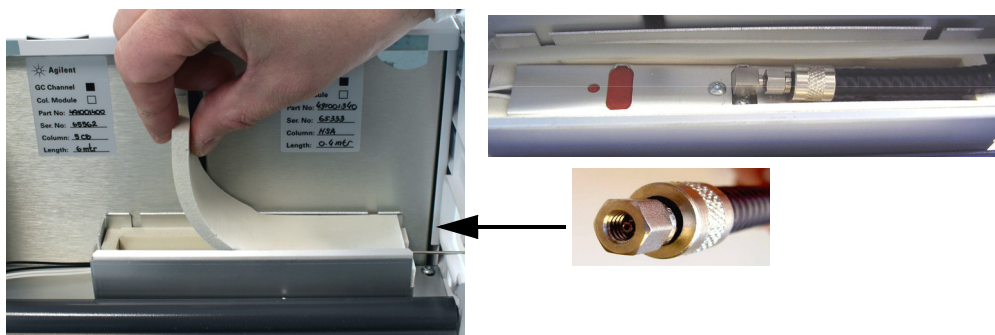


7 Connect the Gas Connections.

- a Couple Active Charcoal Filter to **Zero Gas**.
- b Connect clean carrier gas, He or N₂ at max 550 kPa to **Transfer Gas** port.



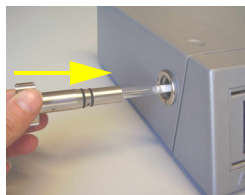
8 Remove the insulation and connect the Transfer Line.



9 Insert the adsorption tube.



10 Shut tube holder by turning clockwise.



11 Start-up procedure.

Please wait until the instrument finishes the self check procedure and is ready for operation (Standby-mode).



**Main Switch
(On/Off)
Back view of the instrument**



Please read the User Manual on the CD for more support.

Warranty

The material contained in this document is provided "as is," and is subject to being changed, without notice, in future editions. Further, to the maximum extent permitted by applicable law, Agilent disclaims all warranties, either express or implied, with regard to this manual and any information contained herein, including but not limited to the implied warranties of merchantability and fitness for a particular purpose. Agilent shall not be liable for errors or for incidental or consequential damages in connection with the furnishing, use, or performance of this document or of any information contained herein. Should Agilent and the user have a separate written agreement with warranty terms covering the material in this document that conflict with these terms, the warranty terms in the separate agreement shall control.

© Agilent Technologies, Inc. 2015
Printed in USA
First edition, January 2015
Agilent Technologies, Inc.
5301 Stevens Creek Boulevard
Santa Clara, CA 95051 USA



G3581-90012