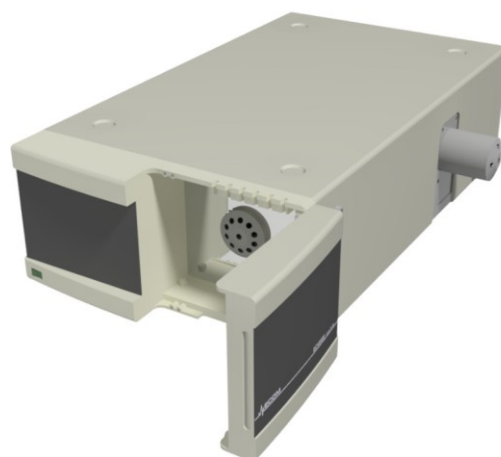


# ECV2014

## FRACTION COLLECTOR WITH 10 AND 4 POSITION VALVE



**ECV2014 for automation of flash and preparative purification.** It collects fractions according to chosen method which can be created by using **ECOMAC** software.

Fraction collector is equipped with 2 selector rotary valves - with 10 and 4 positions. Single stream is directed to selected outlet. It is gradually collected liquid outflowing from detector of the liquid chromatography system. One of them is used as waste and others are used for collecting samples.

### Smart ECOMAC Functionality

The ECOMAC software is able to stop the pumping of all connected pumps while switching valve positions.

One possible way to use a 4-position valve is to connect it to the pump and then inject the samples/switch the solvents.

### Fraction collector operating modes:

- Collect all
- Level (different up and down value)
- Slope (different up and down value)
- Time shift of all collection functions.

### Fraction collector functions main features:

- **Unit simplicity**
- **Easy programming of fraction collection**
- **Compact size fits in most fume hoods**

## SPECIFICATION

	10-POSITION VALVE	4-POSITION VALVE
Number of positions	10	4
Maximum operating pressure	max. 1.72 MPa (250 psi)	
Maximum flow rate (water)	max. 500 ml/min	
Maximum temperature	max. 75°C	
Orifice	1.5 mm (0.060")	
Wetted materials	FEP, PEEK, CTFE, PPS, Valcon E2	
Thread for tubing connection	1/4"-28	
Inlet/outlet tubing	FEP tubing OD 1/8" x ID 1/16"	
<b>COMMON PARAMETERS</b>		
Communication	RS232, Ethernet (LAN), USB	
Power supply	100-240 V 50/60 Hz 110 VA	
Dimensions (W x H x D)	330 x 149 x 498 mm (12.99 x 5.87 x 19.61 in)	
Weight (without racks and tubes)	7 kg (2.20 lb)	