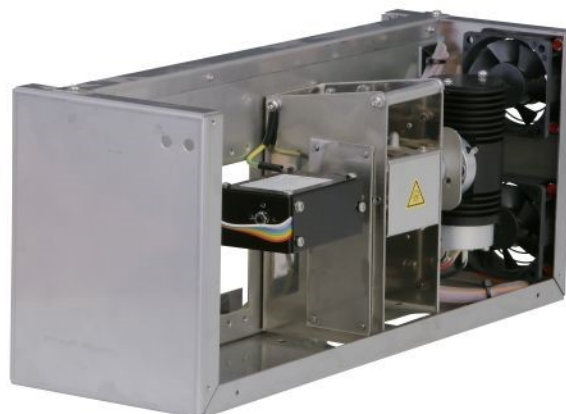


# TOY18DAD 400

**TWO CHANNEL UV DETECTOR**  
**FOUR CHANNEL UV DETECTOR**  
**SCANNING UV DETECTOR**



is **OEM built-in** UV detector suited for preparative and flash chromatography with diode array (**DAD**) in range **200 – 400 nm**. It is offered in the following versions:

**Two Channel** version measures at **two wavelengths simultaneously** with possibility to see **current scan**.

**Four Channel** version measures at **four wavelengths simultaneously** with possibility to see **current scan**.

**Scanning** version measures at **four wavelengths simultaneously or sends scan with speed up to 20 Hz which allows to create 3D picture**.

More wavelengths or scan are used in liquid chromatography to **verify purity of analyzed samples** or in situations when some peaks absorb on different wavelengths.

The unit is supplied with **AMY17 PCB** board of dimensions 100 x 160 mm (3.94 x 6.30 in) . It powers the lamps and control the unit.

- small dimensions
- **built-in** lamp working hours counter
- **easy replacement of flow cell**
- **measuring at more wavelengths simultaneously**
- **sophisticated diagnostic software**

**To the AMY17 board can be optionally connected:**

- Analog outputs board
- LAN and USB board
- Display with keyboard
- Leakage sensor

**Most important features of TOY18DAD detectors:**

## SPECIFICATION

	Two Channel	Four Channel	Scanning
Part Number	<b>TOY0100Y</b>	<b>TOY0200Y</b>	<b>TOY0300Y</b>
Wavelength range	200 - 400 nm (128 elements on CCD)		
Number of channels (Signals)	2	4	4
Scan	Informative 200 – 400 nm	Informative 200 – 400 nm	200 - 400 nm, up to 20 Hz, step 1 nm
Typical spectral half-width	10 nm		
Accuracy of adjustment /Reproducibility	± 1 nm /±0.5 nm		
Noise level at test cell (254 nm, TC 0.75s)	± 5 x 10 <sup>-5</sup> AU		
Drift at test cell (254 nm after 1 h)	1 x 10 <sup>-3</sup> AU/hr		
Materials in contact with mobile phase	FEP; fused silica, stainless steel. PEEK		
Time constant (T63)	0.5 s, 0.75 s, 1.0 s, 2.0 s, 4.0 s, 8.0 s, 16.0 s, 0.2 s, 0.1 s		
Interface	RS232; optionally LAN or USB		
Power supply	24 -36 V DC		
Power input	48 W		
Dimensions (W x H x D)	131 x 167 x 386 mm (5.15 x 6.57 x 15.20 in)		
Weight	3.20 kg (7.06 lb)		

### PREPARATIVE CELL PLCC 15L IN BRACKET

volume/optical path (adjustable)	45 µl / 0.3 mm; 55 µl / 1.4 mm; 70 µl / 2.4 mm
Cell connecting	tubing with OD = 1/8", thread 1/4"-28
Maximal flow rate	500 ml/min. (3 000 ml/min. with PLCC 3L)