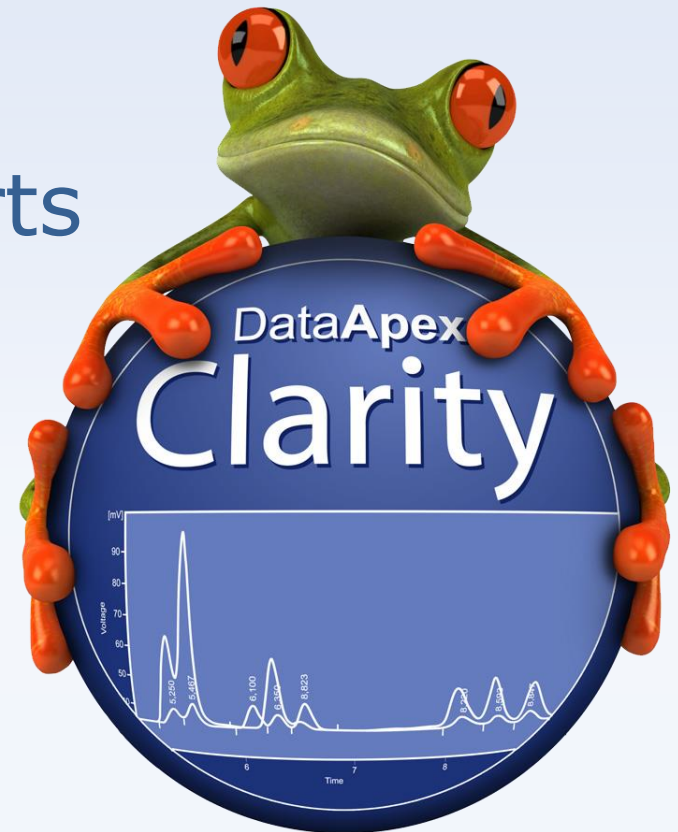


CLARITY 7.0

WHAT'S NEW

New Features in Clarity 7.0

- ✓ Simplified installation structure
- ✓ Custom units
- ✓ User defined variables
- ✓ Single Analysis supports injection by AS
- ✓ Improved batch
- ✓ New control modules



With Clarity 7.0 we deliver to you a totally reorganized installation structure.

How will you benefit?

- ✓ Datafiles conveniently stored in one location
- ✓ Easier backup
- ✓ Well-arranged installation structure

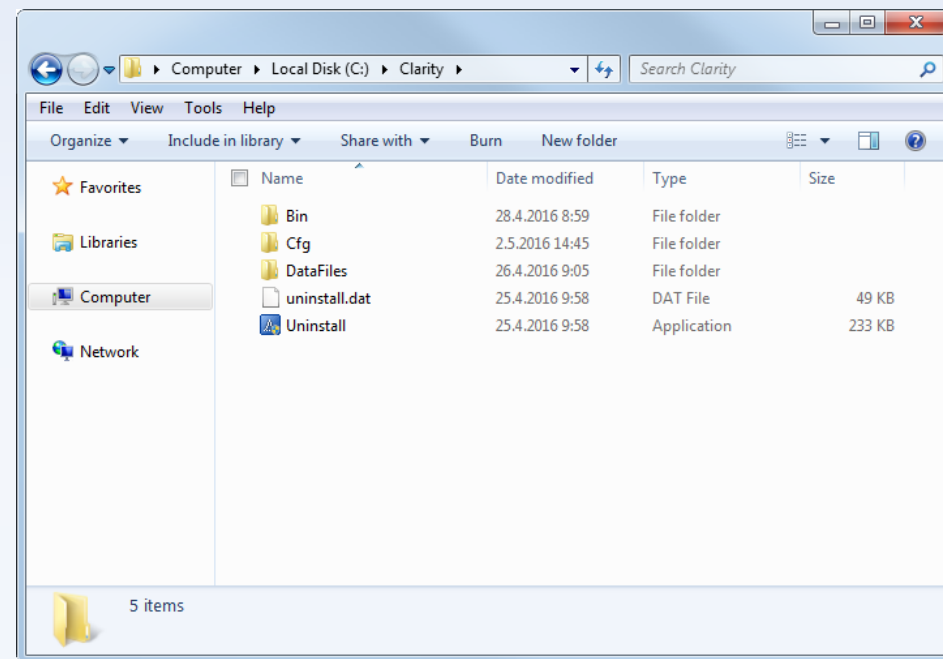
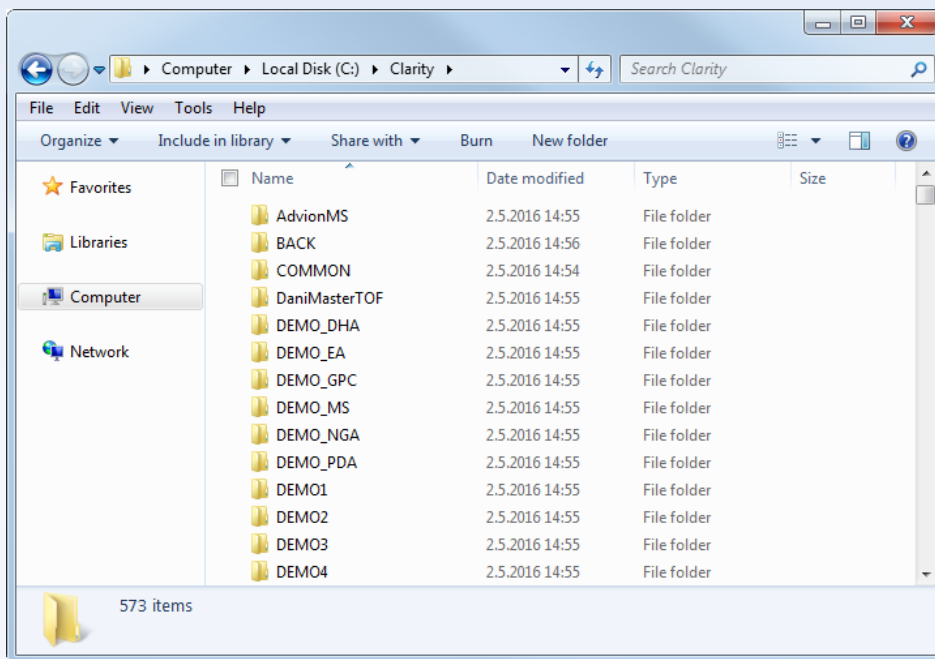


Clarity up to 6.2:

- ✓ Binary files, configurations and data files all mixed up in one directory

Clarity 7.0:

- ✓ All files sorted in relevant sub-directories



Units setup:

- ✓ Set globally per instrument
- ✓ Available setup from main Clarity window or from System Configuration

The screenshot displays the 'System Configuration' window with the 'Units Setup' dialog for 'Instrument 1' open. The dialog is titled 'Instrument 1 - Units' and contains the following sections:

- Basic Units:**
 - Flow Rate Units: mL/min
 - Pressure Units: MPa
 - Temperature Units: °C
 - Injection Volume Units: µL
- Auxiliary Signal Units:**
 - Voltage Units: V
 - Power Units: W
 - Current Units: mA
- X-Axis Units:**
 - Title: Time, Units: Time - minutes, Custom Units: (empty)
 - Replace Retention Time with: Retention Time
 - Replace Start Time with: Start Time
 - Replace End Time with: End Time
 - Display Area in: Time - seconds
 - Display W05 in: Time - minutes
 - Display Drift in: Time - hours

Buttons at the bottom of the dialog include OK, Cancel, Default, and Help. A mouse cursor is pointing at the 'Cancel' button.

The background 'System Configuration' window shows a tree view of control modules (AS, LC, GC, Detector, Balance, Thermostat, Valve, Fraction Collector, Capillary, Electrophoresis, Auxiliary) and a table of instrument configurations. The 'Detector' module is expanded, showing four 'Colbrick' instruments. The 'Instrument 1' configuration is selected, showing 'Instrument 1' and 'Instrument 2'.

- ✓ Newly implemented user defined variables can be used for further custom calculations
- ✓ Advanced tab of method setup – variables are copied to the measured chromatogram
- ✓ Available for Single Analysis and Sequence

Single Analysis - (Demo1)

Analysis

Sample ID

Sample

Amount 0 ISTD1 Amount 0

Dilution 1 Inj. Volume [μL] 0

Calibration Standard

Level: 1

Method...

Comments...

Analysis User Variables

Variable	Name	Value
Variable 1	AnalysisUserVar1	1
Variable 2	AnalysisUserVar2	2
Variable 3	AnalysisUserVar3	3

Control

Run Stop Abort Snapshot

Chromatogram File Name (STD1 - 02_05_2016)

STD1 - %D

Enable File Overwrite Counter 1 Data Recovery...

OK Cancel Help

Method Setup Demo1

Common for all detectors

Subtraction

Chromatogram [None]

Matching No Change

Set... None

Column Calculations

Unretained Time 0 [min]

Column Length 25000 [mm]

Statistical Moments

From Width at 50%

Auxiliary Signal Store

User Variables

Variable 1

Name MethodUserVar1

Value 0

Variable 2

Name MethodUserVar2

Value 0

Variable 3

Name MethodUserVar3

Value 0

Event Table Measurement Acquisition Integration Calculation Advanced

OK Cancel Send Method Report... Audit Trail... Help

- ✓ Single Analysis now supports injection via directly controlled autosampler

Single Analysis - (Demo1)

Analysis

Sample ID:

Sample:

Amount: ISTD1 Amount: ...

Dilution: Inj. Volume [µL]:

Calibration Standard

Level:

Method...

Comments...

Analysis User Variables

Control

Use Autosampler Vial: ...

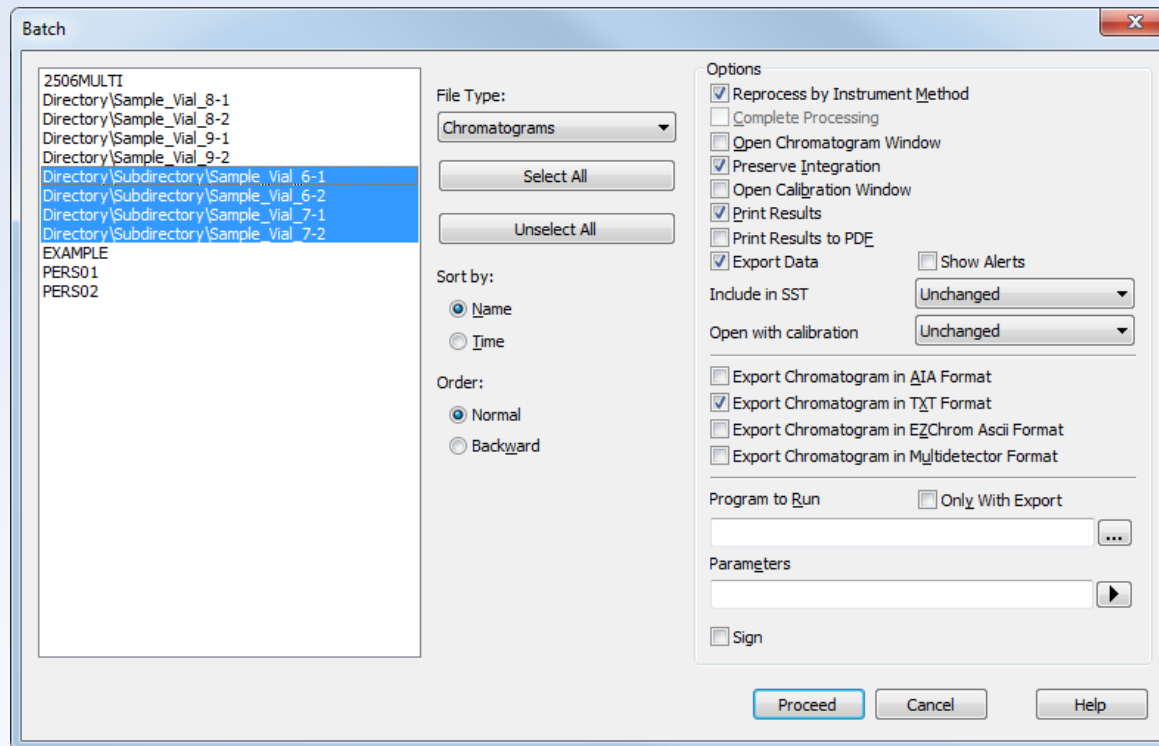
Chromatogram File Name (STD1 - 29_04_2016)

▶ ...

Enable File Overwrite Counter: Data Recovery...

OK Cancel Help

- ✓ Batch dialog now supports reprocessing of files in subdirectories



Installation
structure

Custom
units

User defined
variables

AS in single
analysis

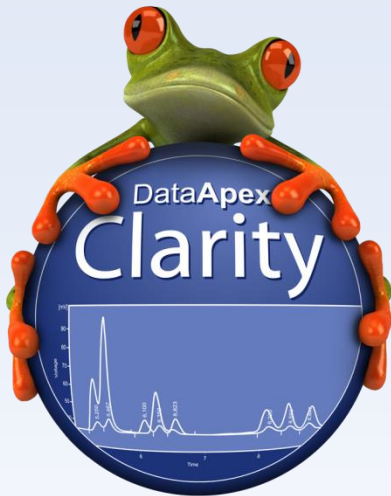
Improved
batch

New control
modules

- ✓ Microsaic 4000 MiD
- ✓ Spark Integrity autosampler
- ✓ Various control modules are updated
 - ✓ Advion Expression CMS



Thanks for your attention



More information about Clarity and DataApex at:

www.dataapex.com

For technical support contact us at:

support@dataapex.com

