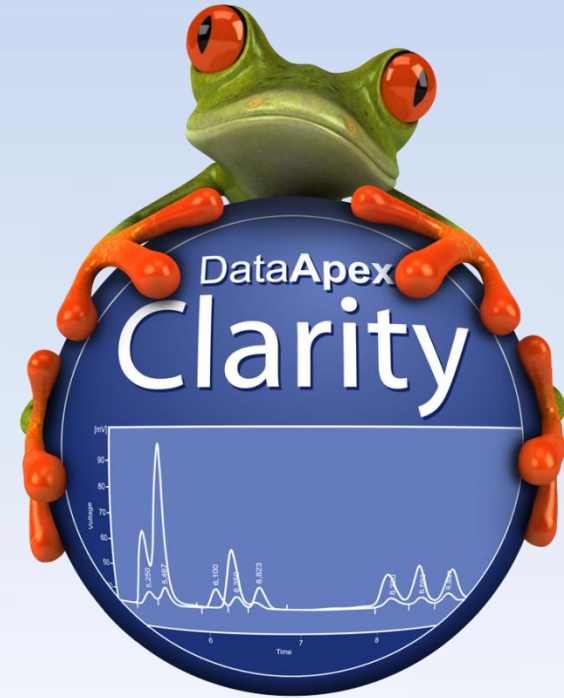


CLARITY 7.3

WHAT'S NEW

What is new in Clarity 7.3

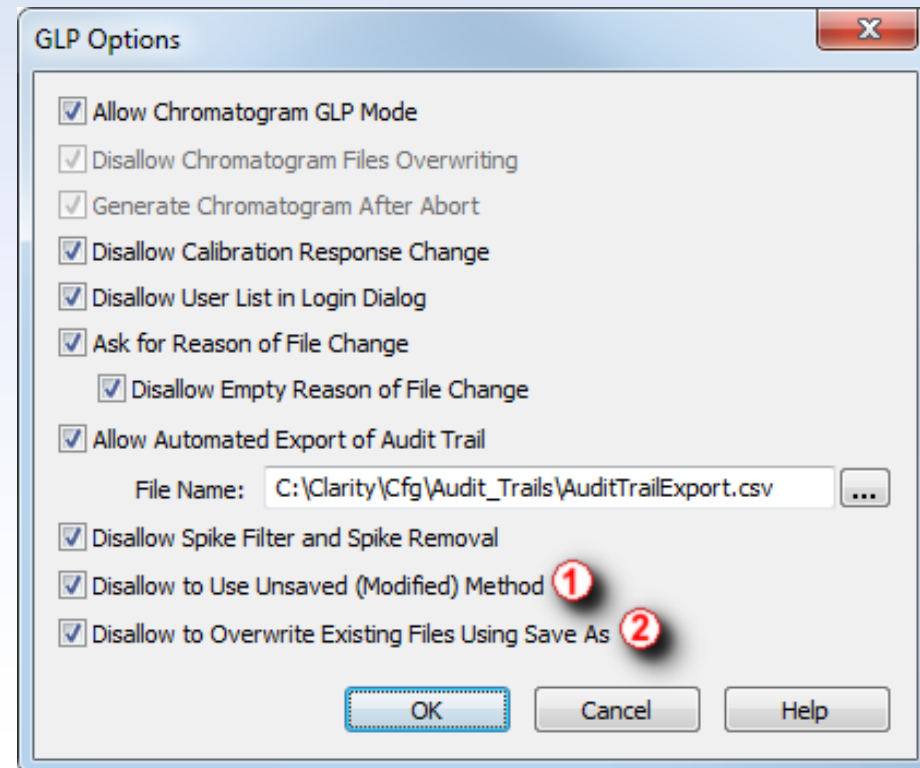
- Enhanced GLP options
- Improved Experimental Integration Algorithm
- Export of Auxiliary signals
- Discontinued support for Windows Vista
- Installation under Windows 8 requires 8.1 update
- New control modules



We take Good Laboratory Practice (GLP) seriously and respond to GLP issues with the utmost importance.

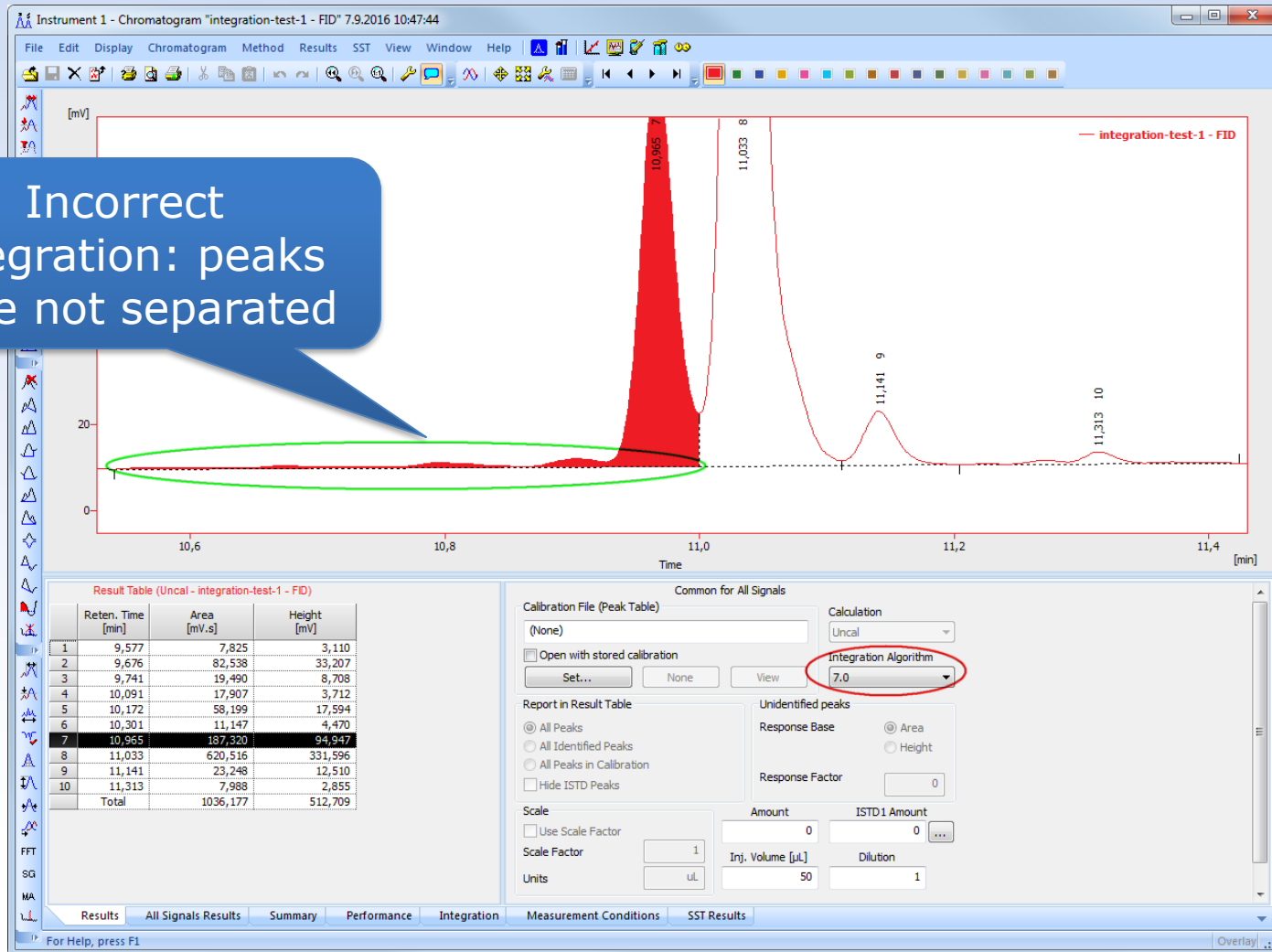
Enhanced GLP options:

- ① Prevent measuring with unsaved method
- ② Overwriting of existing files can be prohibited



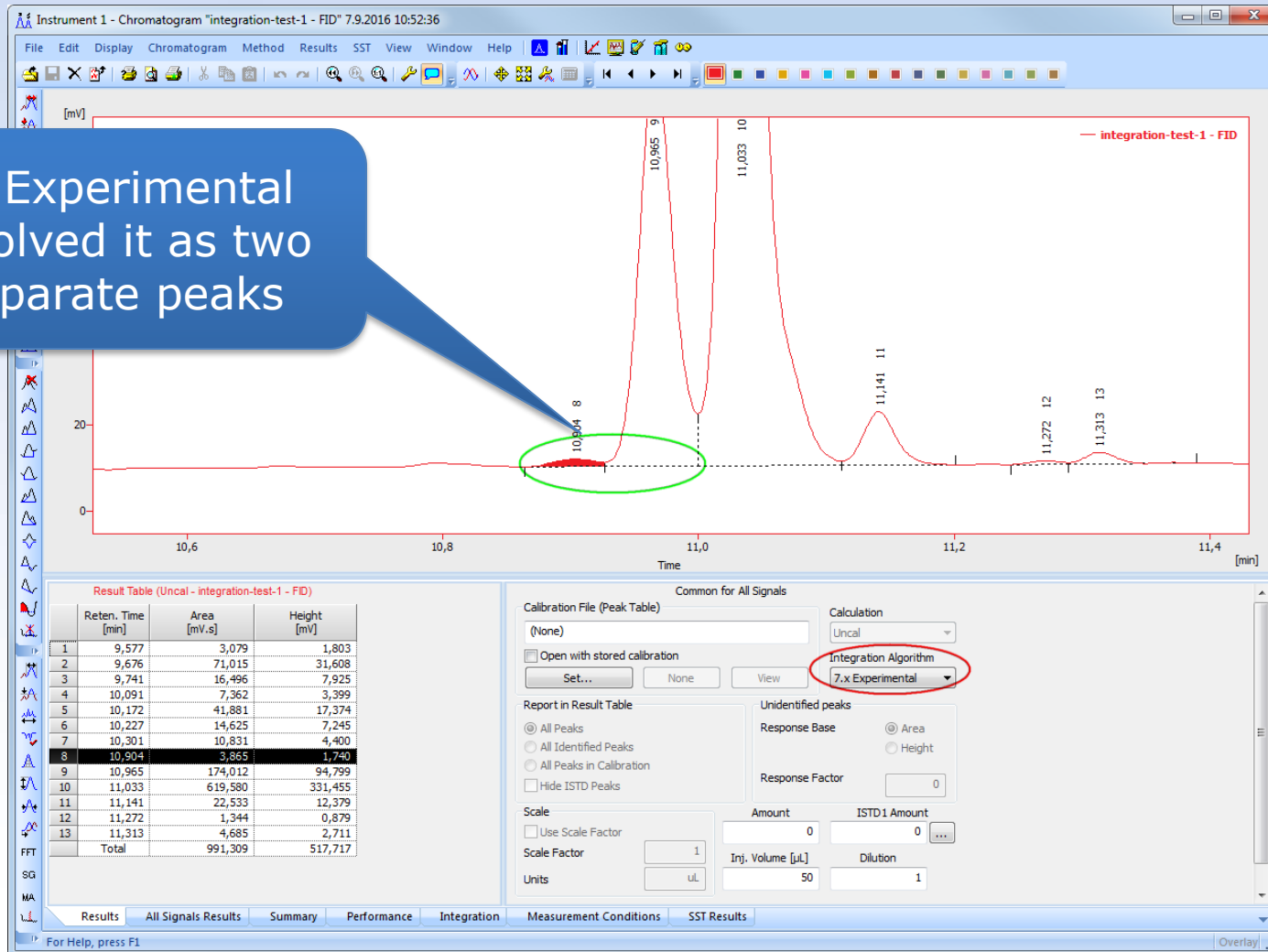
Further improvements in the IA Experimental - better detection of peaks

Incorrect
integration: peaks
were not separated

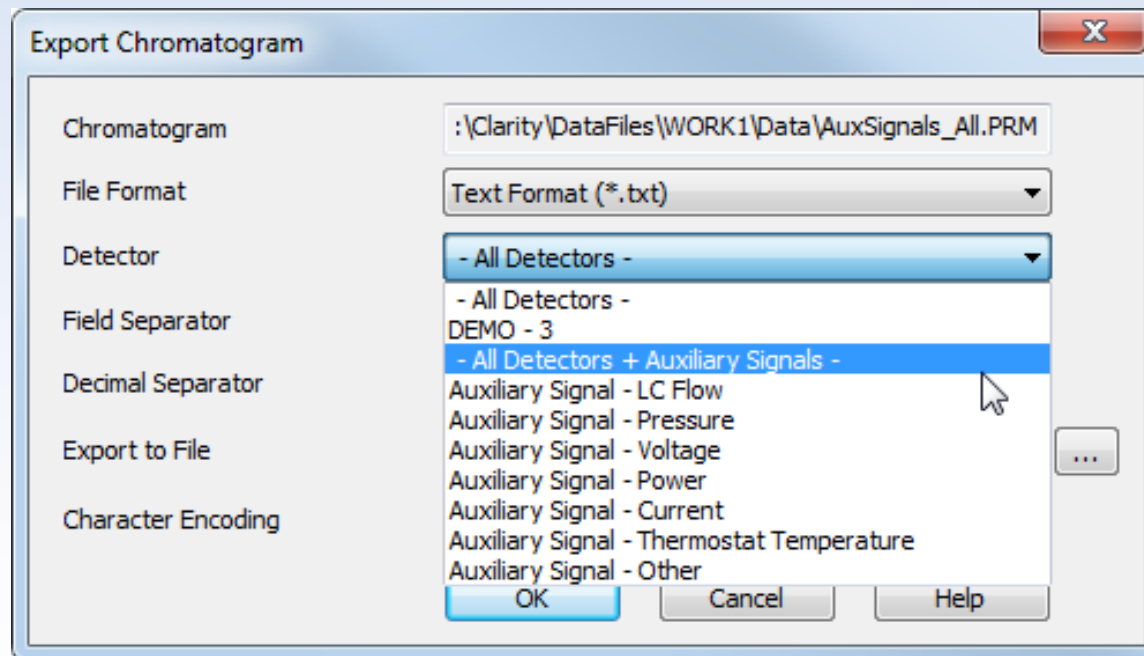


Further improvements in the IA Experimental - better detection of peaks

IA Experimental
resolved it as two
separate peaks



- Auxiliary signals can now be exported into *.txt format
 - You can further process the exported data such as evaluate the course of pressure or flow



- Support for Windows Vista and Windows 8 ended:
 - Use supported Windows: 7, 8.1 or 10
 - Update from Windows 8 to 8.1 is offered free of charge directly from Microsoft

Compatibility overview of Clarity 7.3:

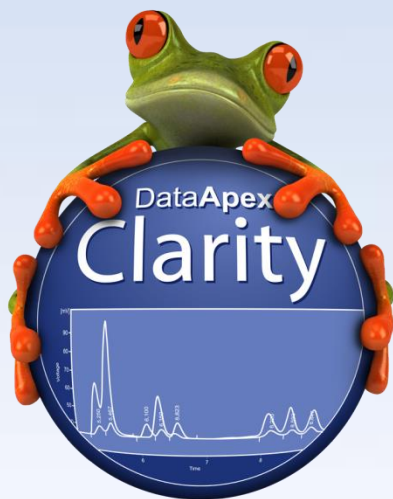
Windows					
XP SP3	Vista	7 SP1	8	8.1	10
✓	✗	✓	✗	✓	✓

- Sedere – Sedex 100LT
- Recipe – EC6000
- Elysia Raytest – Gabi Nova and Ramona Star
- Agilent – 7820 and various ICF control modules

... and many other control modules have been updated



Download your Clarity 7.3 directly from your station
or from our website



More information about Clarity and DataApex at:

www.dataapex.com

For technical support contact us at:

support@dataapex.com

