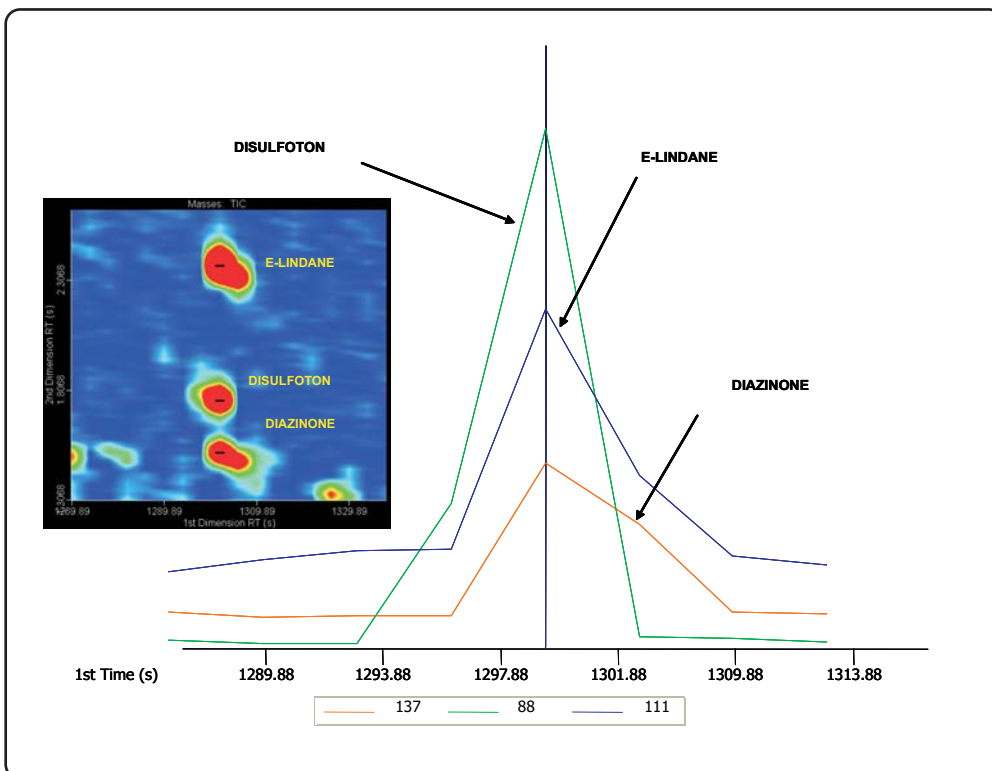


Analysis of Pesticides in Brewed Green Tea by SBSE-GCxGC-TOFMS Showing Baseline Resolution of Three Pesticides in the 2nd Dimension Separation

Life Science and Chemical Analysis Centre
LECO Corporation, Saint Joseph, Michigan USA



Disulfoton, E-Lindane, and Diazinone spiked at 250 ppt into brewed green tea is illustrated in the reconstructed 1st dimension chromatogram by the unique ions m/z 137, 88, and 111 showing complete coelution in the first dimension. The inset of the three dimensional contour plot shows that these pesticides are baseline resolved by the 2nd dimension separation.

Columns:

10 m x 0.18 mm x 0.2 μ m Rtx-5
1.5 m x 0.10 mm x 0.10 μ m DB-17

TOFMS:

45 to 550 m/z @ 150 spectra/s

For questions on this analysis
e-mail us at: life_science@leco.com

For a complete listing of snapshots
and application notes visit us on the
web at www.leco.com

