

### Errata Notice

This document contains references to PSS or Polymer Standards Service. Please note that PSS is now Agilent. This document will be republished as an Agilent document in the future.



A part of Agilent

## # 10276 - Column Application Note Characterization of Alginate Sodium Salt

Alginate sodium salt is a biopolymer used in food, cosmetic, and pharma industry as a emulsifier, emulsion stabilizer or thickener.

### Experimental Setup

Mobile Phase:	Water Disodium hydrogen phosphate 0.07M
Stationary Phase:	PSS SUPREMA
Flow rate [mL/min]:	1,00
Temperature [°C]:	25
Detection:	GPC1100 Refractive index
Calibration:	Kit Pullulan
Data processing:	PSS WinGPC

### Recommendations for Sample Concentration

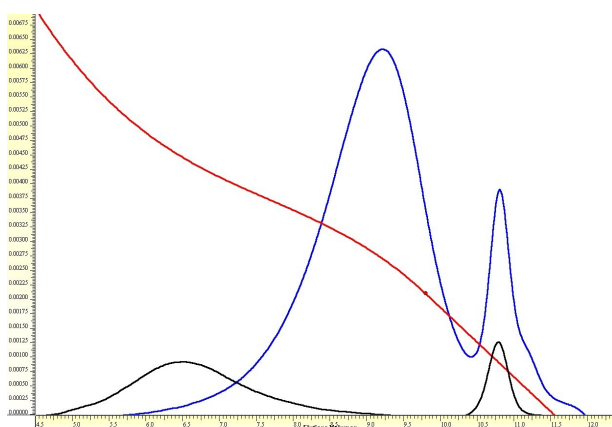
narrow PDI	
M 100 Da - 10 000 Da:	2 g/L
M 10 000 Da - 1 000 000 Da:	1-2 g/L
M > 1 000 000 Da:	0.5 g/L or less
broad PDI (>1.5)	
all molar masses:	3.0 - 5.0 g/L
Injection volume [ $\mu$ L]:	20



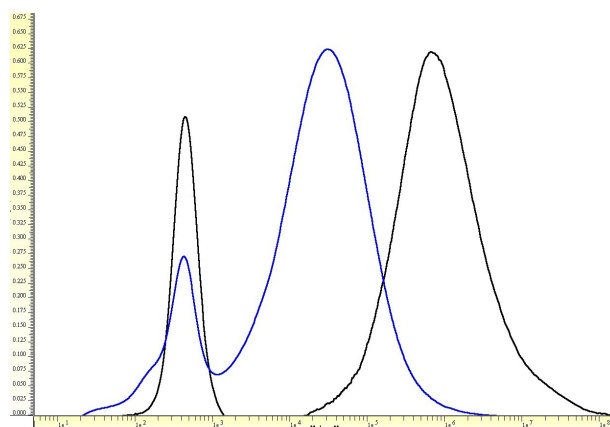
### Suitable Columns

low molecular weights:	P/N 206-0001 (set of 3) OR sua083005lis (1 linear)
medium molecular weights:	P/N 206-0002 (set of 3) OR sua083005lim (1 linear)
high molecular weights:	P/N 206-0003 (set of 3) OR sua083010lxl (1 linear)
ultrahigh molecular weights:	P/N 206-0004 (set of 3) OR sua083010luh (1 linear)

### Calibration and elugram of two different alginate sodium salt samples separation on PSS SUPREMA



### Molar mass distribution based on pullulan calibration separation on PSS SUPREMA



PSS Polymer Standards  
Service GmbH  
In der Dalheimer Wiese 5  
55120 Mainz | Germany

Phone +49 6131 96239-0  
Fax +49 6131 96239-11  
E-Mail [info@pss-polymer.com](mailto:info@pss-polymer.com)  
Web [www.pss-polymer.com](http://www.pss-polymer.com)

Polymer Standards  
Service-USA, Inc.  
160 Old Farm Rd, Suite A  
Amherst | MA 01002 | USA

Phone +1 413 835-0265  
Fax +1 413 835-0354  
E-Mail [pssusa@pss-polymer.com](mailto:pssusa@pss-polymer.com)  
Web [www.pss-polymer.com](http://www.pss-polymer.com)

RA45128.3762847222  
5994-6271EN  
August 1, 2023