

**Errata Notice**

This document contains references to PSS or Polymer Standards Service. Please note that PSS is now Agilent. This document will be republished as an Agilent document in the future.



A part of Agilent

# # 10047 - Column Application Note Characterization of Poly(carbonate urethane)

Poly(carbonate urethane) (PCU)

## Experimental Setup

Mobile Phase:	Tetrahydrofuran
Stationary Phase:	PSS SDV
Flow rate [mL/min]:	1,00
Temperature [°C]:	25
Detection:	GPC1100 Refractive index    GPC1100 UV 254
Calibration:	ReadyCal-Kit Poly(styrene)
Data processing:	PSS WinGPC

## Recommendations for Sample Concentration

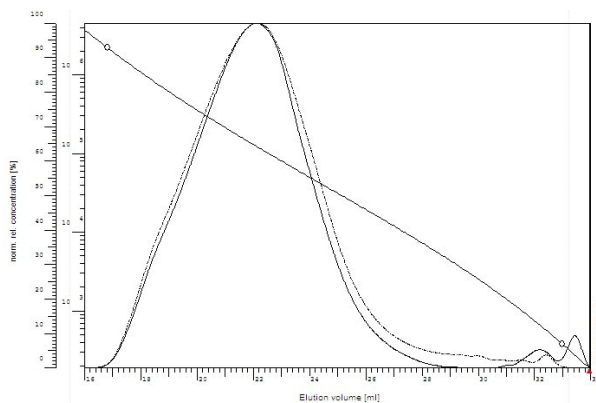
narrow PDI	
M 100 Da - 10 000 Da:	2 g/L
M 10 000 Da - 1 000 000 Da:	1-2 g/L
M > 1 000 000 Da:	0.5 g/L or less
broad PDI (>1.5)	
all molar masses:	3.0 - 5.0 g/L
Injection volume [µL]:	100



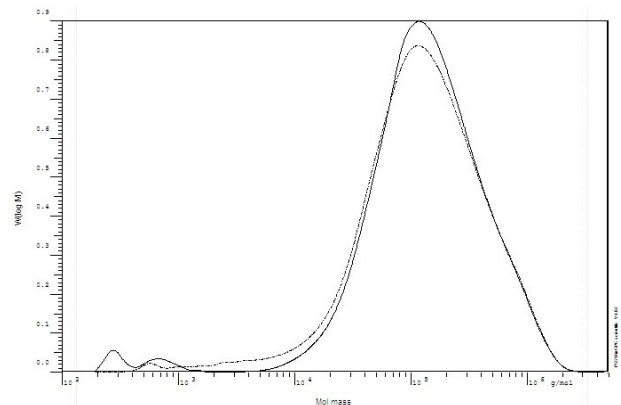
## Suitable Columns

low molecular weights:	P/N 201-0001 (set of 3) OR sda083003lis (1 linear)
medium molecular weights:	P/N 201-0002 (set of 2) OR sda083005lim (1 linear)
high molecular weights:	P/N 201-0003 (set of 3) OR sda083005lxl (1 linear)
ultrahigh molecular weights:	P/N 202-0001 (set of 3)

## Elugram and Calibration separation on PSS SDV



## Molar Mass Distribution separation on PSS SDV



**PSS Polymer Standards  
Service GmbH**  
In der Dalheimer Wiese 5  
55120 Mainz | Germany

**Phone** +49 6131 96239-0  
**Fax** +49 6131 96239-11  
**E-Mail** info@pss-polymer.com  
**Web** www.pss-polymer.com

**Polymer Standards  
Service-USA, Inc.**  
160 Old Farm Rd, Suite A  
Amherst | MA 01002 | USA

**Phone** +1 413 835-0265  
**Fax** +1 413 835-0354  
**E-Mail** pssusa@pss-polymer.com  
**Web** www.pss-polymer.com

DE95364796

5994-6286EN  
July 1, 2023