

### Errata Notice

This document contains references to PSS or Polymer Standards Service. Please note that PSS is now Agilent. This document will be republished as an Agilent document in the future.



A part of Agilent

## # 10042 - Column Application Note Characterization of Poly(ethyl methacrylate)

Poly(ethyl methacrylate) is a weak rubber with glass transition temperature below 0°C and is used as a comonomer for Methacrylates.

### Experimental Setup

Mobile Phase:	Tetrahydrofuran
Stationary Phase:	PSS SDV
Flow rate [mL/min]:	1,00
Temperature [°C]:	35
Detection:	Shodex-RI71
Calibration:	ReadyCal-Kit Poly(methyl methacrylate)
Data processing:	PSS WinGPC

### Recommendations for Sample Concentration

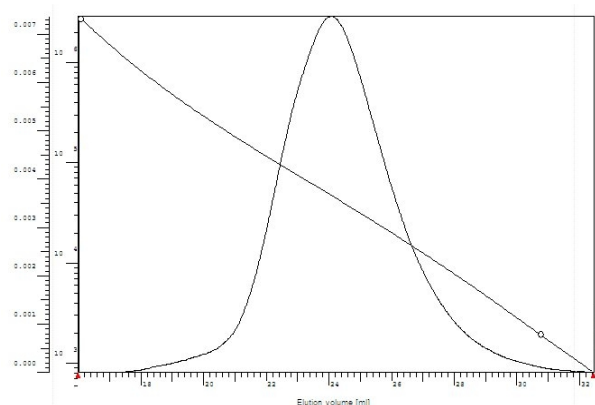
narrow PDI	
M 100 Da - 10 000 Da:	2 g/L
M 10 000 Da - 1 000 000 Da:	1-2 g/L
M > 1 000 000 Da:	0.5 g/L or less
broad PDI (>1.5)	
all molar masses:	3.0 - 5.0 g/L
Injection volume [μL]:	100



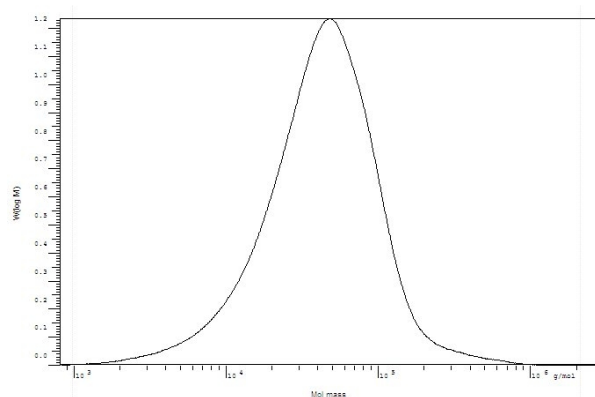
### Suitable Columns

low molecular weights:	P/N 201-0001 (set of 3) OR sda083003lis (1 linear)
medium molecular weights:	P/N 201-0002 (set of 2) OR sda083005lim (1 linear)
high molecular weights:	P/N 201-0003 (set of 3) OR sda083005lxl (1 linear)
ultrahigh molecular weights:	P/N 202-0001 (set of 3)

### Elugram and Calibration separation on PSS SDV



### Molar Mass Distribution separation on PSS SDV



PSS Polymer Standards  
Service GmbH  
In der Dalheimer Wiese 5  
55120 Mainz | Germany

Phone +49 6131 96239-0  
Fax +49 6131 96239-11  
E-Mail [info@pss-polymer.com](mailto:info@pss-polymer.com)  
Web [www.pss-polymer.com](http://www.pss-polymer.com)

Polymer Standards  
Service-USA, Inc.  
160 Old Farm Rd, Suite A  
Amherst | MA 01002 | USA

Phone +1 413 835-0265  
Fax +1 413 835-0354  
E-Mail [pssusa@pss-polymer.com](mailto:pssusa@pss-polymer.com)  
Web [www.pss-polymer.com](http://www.pss-polymer.com)

DE00073961

5994-6282EN  
July 1, 2023