

**Errata Notice**

This document contains references to PSS or Polymer Standards Service. Please note that PSS is now Agilent. This document will be republished as an Agilent document in the future.



A part of Agilent

## # 10058 - Column Application Note Characterization of Poly Naphthalene Sulfonate

Poly naphthalene sulfonate sodium salt is used as dispersing agent for pulp and paper applications.

### Experimental Setup

Mobile Phase:	Water Disodium hydrogen phosphate 0.07M
Stationary Phase:	PSS MCX
Flow rate [mL/min]:	1,00
Temperature [°C]:	25
Detection:	Shodex-RI71
Calibration:	Kit Pullulan
Data processing:	PSS WinGPC

### Recommendations for Sample Concentration

narrow PDI	
M 100 Da - 10 000 Da:	2 g/L
M 10 000 Da - 1 000 000 Da:	1-2 g/L
M > 1 000 000 Da:	0.5 g/L or less
broad PDI (>1.5)	
all molar masses:	3.0 - 5.0 g/L
Injection volume [ $\mu$ L]:	20

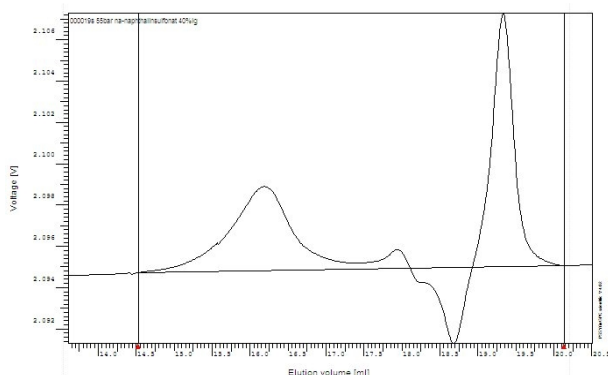


### Suitable Columns

low molecular weights:	P/N 211-0001 (set of 3)
medium molecular weights:	P/N 211-0012 (set of 2)
high molecular weights:	P/N 211-0003 (set of 3)
ultrahigh molecular weights:	P/N 211-0004 (set of 3)

### Raw data with typical negative RI peak and salt peak separation on PSS MCX

### Molar Mass Distribution separation on PSS MCX



PSS Polymer Standards  
Service GmbH  
In der Dalheimer Wiese 5  
55120 Mainz | Germany

Phone +49 6131 96239-0  
Fax +49 6131 96239-11  
E-Mail [info@pss-polymer.com](mailto:info@pss-polymer.com)  
Web [www.pss-polymer.com](http://www.pss-polymer.com)

Polymer Standards  
Service-USA, Inc.  
160 Old Farm Rd, Suite A  
Amherst | MA 01002 | USA

Phone +1 413 835-0265  
Fax +1 413 835-0354  
E-Mail [pssusa@pss-polymer.com](mailto:pssusa@pss-polymer.com)  
Web [www.pss-polymer.com](http://www.pss-polymer.com)

DE38228573

5994-6295EN  
July 1, 2023