

CoreFocus
Report
No.12

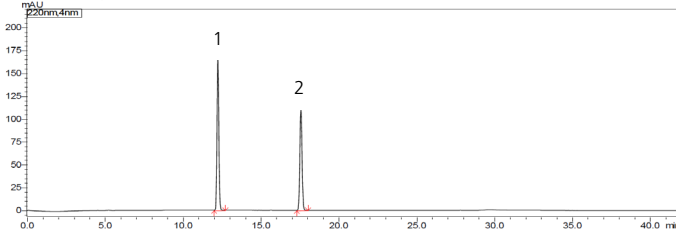
LC Reversed-phase Shim-pack Series

Shim-pack™ VP-ODS

Analysis of Gastrodin, *p*-hydroxybenzyl alcohol and Parishins in *Gastrodia* Tuber

Keywords: Chinese herbal medicine, phenolic glucoside, neuroprotective

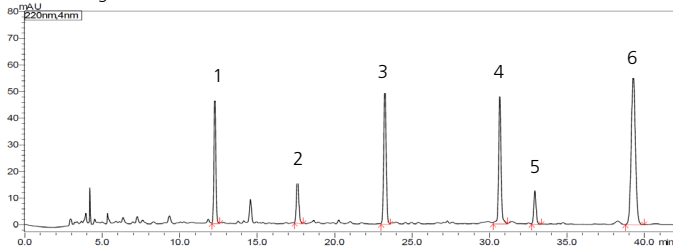
Chromatogram of Standard Mix



1. Gastrodin
2. *p*-hydroxybenzyl alcohol
3. Parishin E
4. Parishin B
5. Parishin C
6. Parishin

Standard Mix
Gastrodin (50 µg/mL in Acetonitrile-water (3:97))
p-hydroxybenzyl alcohol (35 µg/mL in Acetonitrile-water (3:97))

Chromatogram of Medicinal Standard mix

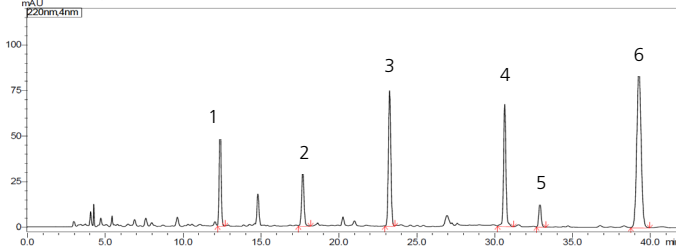


Pretreatment procedure

<Medical material of *Gastrodia*>

- a. Collect sample. (Herbal medicine: Six Ingredient Pills with *Rehmannia*) and grind to a fine powder.
- b. Weigh 0.5g of medicinal material of *Gastrodia* and transfer into a stoppered conical flask.
- c. Add 25 mL of 50% Methanol/Water into flask.
- d. Close the stopper and reweigh.
- e. Ultrasonically treat it (power 500W, frequency 40 kHz) for 30 minutes.
- f. After cooling, shake well and filter into a sample vial.

Chromatogram of *Gastrodia*



<*Gastrodia*>

- a. Weigh 0.5g of sample (commercially available *Gastrodia* powder) and passed through No. 4 sieve.
- b. Prepare for sample in the same procedure as Control medical material of *Gastrodia*

Column : Shim-pack VP-ODS, (250 mm x 4.6 mm I.D., 5 µm), P/N: 228-34937-92
 Mobile phase : A) 0.1% Phosphoric acid
 B) Acetonitrile
 Time Program : B Conc. 3% (0.0 min) → 10% (10.0 min) → 12% (15.0 min) → 18% (25.0 min) → 8% (40.0 min) → 95% (42.0 min)
 Flow rate : 0.8 mL/min
 Column Temp. : 30°C
 Detection : UV 220 nm
 Injection Volume : 3 µL
 Vial : LabTotal™ Vial for LC/ LCMS, P/N: 227-34001-01

CoreFocus, Shim-pack and LabTotal are trademarks of Shimadzu Corporation or its affiliated companies in Japan and/or other countries.

Shimadzu Corporation
www.shimadzu.com/an/

For Research Use Only. Not for use in diagnostic procedures.

This publication may contain references to products that are not available in your country. Please contact us to check the availability of these products in your country.

The content of this publication shall not be reproduced, altered or sold for any commercial purpose without the written approval of Shimadzu.

Company names, products/service names and logos used in this publication are trademarks and trade names of Shimadzu Corporation, its subsidiaries or its affiliates, whether or not they are used with trademark symbol "TM" or "®". Third-party trademarks and trade names may be used in this publication to refer to either the entities or their products/services, whether or not they are used with trademark symbol "TM" or "®". Shimadzu disclaims any proprietary interest in trademarks and trade names other than its own.

The information contained herein is provided to you "as is" without warranty of any kind including without limitation warranties as to its accuracy or completeness. Shimadzu does not assume any responsibility or liability for any damage, whether direct or indirect, relating to the use of this publication. This publication is based upon the information available to Shimadzu on or before the date of publication, and subject to change without notice.