

CoreFocus
Report
No.64

LC

Reversed-phase

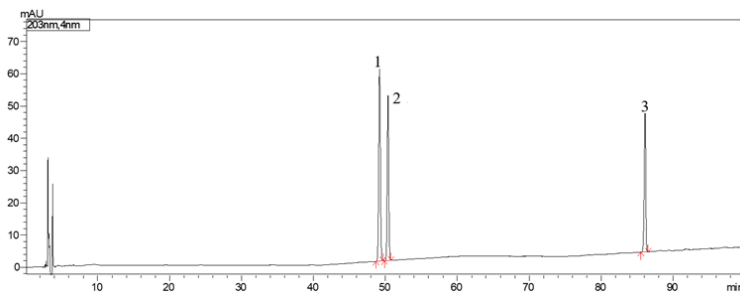
Shim-pack Series

Shim-pack™ GISS C18

Analysis of Ginsenosides in *Ginseng*

Keywords: panaxosides, triterpene saponins

Chromatogram of Standard Mix



1. Ginsenosides Rg₁
2. Ginsenosides Re
3. Ginsenosides Rb₁

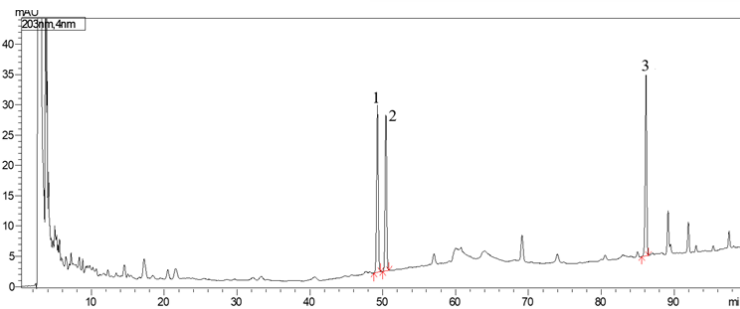
Standard Mix

Ginsenosides Rg₁ (0.2 mg/mL in 70% Methanol)
Ginsenosides Re (0.2 mg/mL in 70% Methanol)
Ginsenosides Rb₁ (0.2 mg/mL in 70% Methanol)

Pretreatment procedure

- a. Weigh 1 g of this product powder.
- b. Add Chloroform and reflux for 3 hours.
- c. Discard the chloroform liquid.
- d. Evaporate the dregs and evaporate the solvent together with the filter paper cartridge.
- e. Transfer into a 100 mL Erlenmeyer flask.
- f. Precisely add 50 mL of saturated n-butanol.
- g. Place overnight and ultrasonic treatment (power 250W, frequency 33kHz) for 30 minutes.
- h. Filter discard the first filtrate.
- i. Measure 25 mL of the filtrate.
- j. Place it in an evaporating dish and evaporate to dryness.
- k. Add Methanol to dissolve the residue and transfer to a 5 mL measuring flask.
- l. Add Methanol to dilute to the mark.
- m. Shake well and filter into a sample vial.

Chromatogram of Standard *Ginseng*



Column	: Shim-pack GISS C18 (250 mm x 4.6 mm I.D., 5 μm), P/N : 227-30061-07
Mobile phase	: A) Water B) Acetonitrile
Gradient Program	: 19%B (0 min – 35 min) – 29%B (55 min – 70 min) – 40%B (100 min)
Flow rate	: 1.0 mL/min
Column temp.	: 35 °C
Injection vol.	: 10 μL
Vial	: LabTotal™ Vial for LC/LCMS, P/N : 227-34001-01
Detection	: UV at 203 nm

CoreFocus, Shim-pack and LabTotal are trademarks of Shimadzu Corporation or its affiliated companies in Japan and/or other countries.

Shimadzu Corporation
www.shimadzu.com/an/

For Research Use Only. Not for use in diagnostic procedures.

This publication may contain references to products that are not available in your country. Please contact us to check the availability of these products in your country.

The content of this publication shall not be reproduced, altered or sold for any commercial purpose without the written approval of Shimadzu.

Company names, products/service names and logos used in this publication are trademarks and trade names of Shimadzu Corporation, its subsidiaries or its affiliates, whether or not they are used with trademark symbol "TM" or "®". Third-party trademarks and trade names may be used in this publication to refer to either the entities or their products/services, whether or not they are used with trademark symbol "TM" or "®". Shimadzu disclaims any proprietary interest in trademarks and trade names other than its own.

The information contained herein is provided to you "as is" without warranty of any kind including without limitation warranties as to its accuracy or completeness. Shimadzu does not assume any responsibility or liability for any damage, whether direct or indirect, relating to the use of this publication. This publication is based upon the information available to Shimadzu on or before the date of publication, and subject to change without notice.