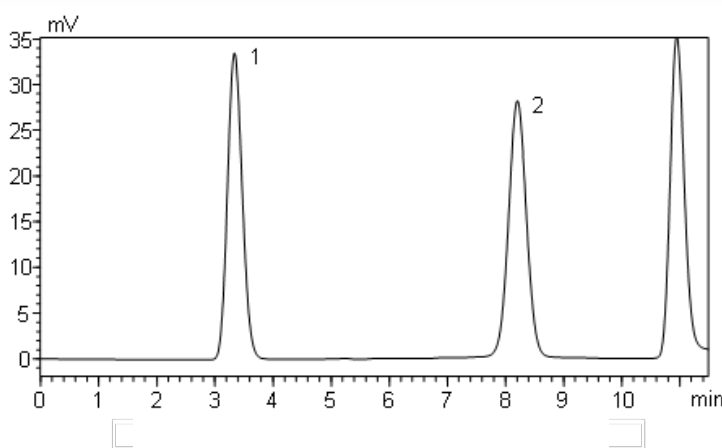


CoreFocus
Report
No.160A

LC Ion-exchange Shim-pack Series

Shim-pack™ Amino-Na
Analysis of Cysteic Acid and Methionine Sulfone under Na Type Condition

Keywords: cysteine, cystine, post-column derivatization, OPA, o-phthalaldehyde, protein hydrolysate



1. Cysteic acid
2. Methionine sulfone
(0.1 mmol/L each)

System	: Nexera™ Post-Column Amino Acid Analysis System
Column	: Shim-pack Amino-Na (100 mm x 6.0 mm I.D., 5 μm), P/N : 228-18837-91
Mobile phase	: A*1) 67 mmol/L Sodium citrate containing 7 % ethanol and 0.15 mol/L perchloric acid B) 0.2 mol/L NaOH Gradient elution
Flow rate	: 0.4 mL/min
Column temp.	: 60 °C
Injection vol.	: 10 μL
Reaction reagent	: Amino Acid Reagent Kits not add sodium hypochlorite to reagent A
Flow rate of reagent	: 0.2 mL/min each
Reaction temp.	: 60 °C
Detection	: Fluorescence, Ex. 350 nm Em. 450 nm

*1: Sodium citrate 2-hydrate 19.6 g, ethanol 70 mL, perchloric acid (60 %) 14 mL into 1 L of water

Source : Application News L568A ([JP](#), [ENG](#))

CoreFocus, Nexera and Shim-pack are trademarks of Shimadzu Corporation or its affiliated companies in Japan and/or other countries.

Shimadzu Corporation
www.shimadzu.com/an/

For Research Use Only. Not for use in diagnostic procedures.

This publication may contain references to products that are not available in your country. Please contact us to check the availability of these products in your country.

The content of this publication shall not be reproduced, altered or sold for any commercial purpose without the written approval of Shimadzu.

Company names, products/service names and logos used in this publication are trademarks and trade names of Shimadzu Corporation, its subsidiaries or its affiliates, whether or not they are used with trademark symbol "TM" or "®".

Third-party trademarks and trade names may be used in this publication to refer to either the entities or their products/services, whether or not they are used with trademark symbol "TM" or "®".

Shimadzu disclaims any proprietary interest in trademarks and trade names other than its own.

The information contained herein is provided to you "as is" without warranty of any kind including without limitation warranties as to its accuracy or completeness. Shimadzu does not assume any responsibility or liability for any damage, whether direct or indirect, relating to the use of this publication. This publication is based upon the information available to Shimadzu on or before the date of publication, and subject to change without notice.