

**CoreFocus**  
**Report**

**No.277**

LC

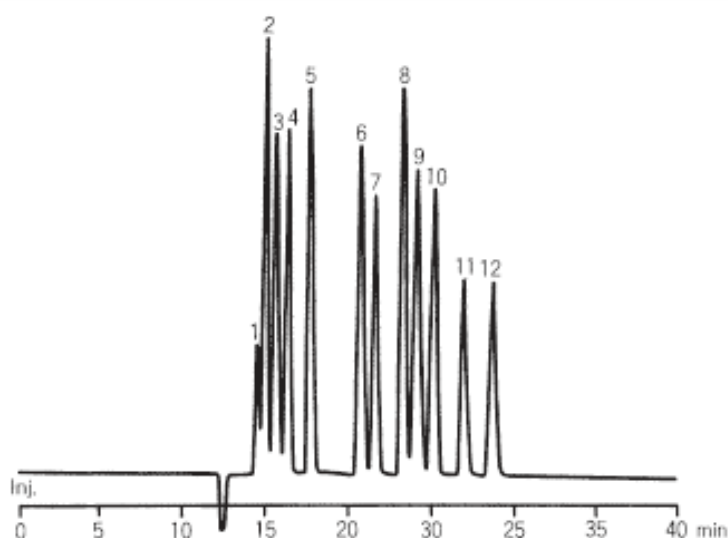
SEC/Ligand Exchange

Shim-pack Series

**Shim-pack™ SCR-102H**

**Analysis of Organic Acids**

**Keywords: carboxylic acids, fatty acids**



1. Phosphoric acid
2.  $\alpha$ -Ketoglutaric acid
3. Citric acid
4. Pyruvic acid
5. Malic acid
6. Succinic acid
7. Lactic acid
8. Formic acid
9. Fumaric acid
10. Acetic acid
11. Levulinic acid
12. Pyroglutamic acid

System	: Organic Acid Analysis System
Column	: Shim-pack SCR-102H (2 columns in series), (300 x 8.0, 7 $\mu$ m) P/N : 228-17893-91
Mobile phase	: 5 mmol/L <i>p</i> -Toluene sulfonic acids aqueous solution
Flow rate	: 0.8 mL/min
Column temp.	: 40 °C
Detection	: Conductivity

CoreFocus and Shim-pack are trademarks of Shimadzu Corporation or its affiliated companies in Japan and/or other countries.

**Shimadzu Corporation**

[www.shimadzu.com/an/](http://www.shimadzu.com/an/)

**For Research Use Only. Not for use in diagnostic procedures.**

This publication may contain references to products that are not available in your country. Please contact us to check the availability of these products in your country.

The content of this publication shall not be reproduced, altered or sold for any commercial purpose without the written approval of Shimadzu.

Company names, products/service names and logos used in this publication are trademarks and trade names of Shimadzu Corporation, its subsidiaries or its affiliates, whether or not they are used with trademark symbol "TM" or "®".

Third-party trademarks and trade names may be used in this publication to refer to either the entities or their products/services, whether or not they are used with trademark symbol "TM" or "®".

Shimadzu disclaims any proprietary interest in trademarks and trade names other than its own.

The information contained herein is provided to you "as is" without warranty of any kind including without limitation warranties as to its accuracy or completeness. Shimadzu does not assume any responsibility or liability for any damage, whether direct or indirect, relating to the use of this publication. This publication is based upon the information available to Shimadzu on or before the date of publication, and subject to change without notice.