

CoreFocus
Report
No.490

GC

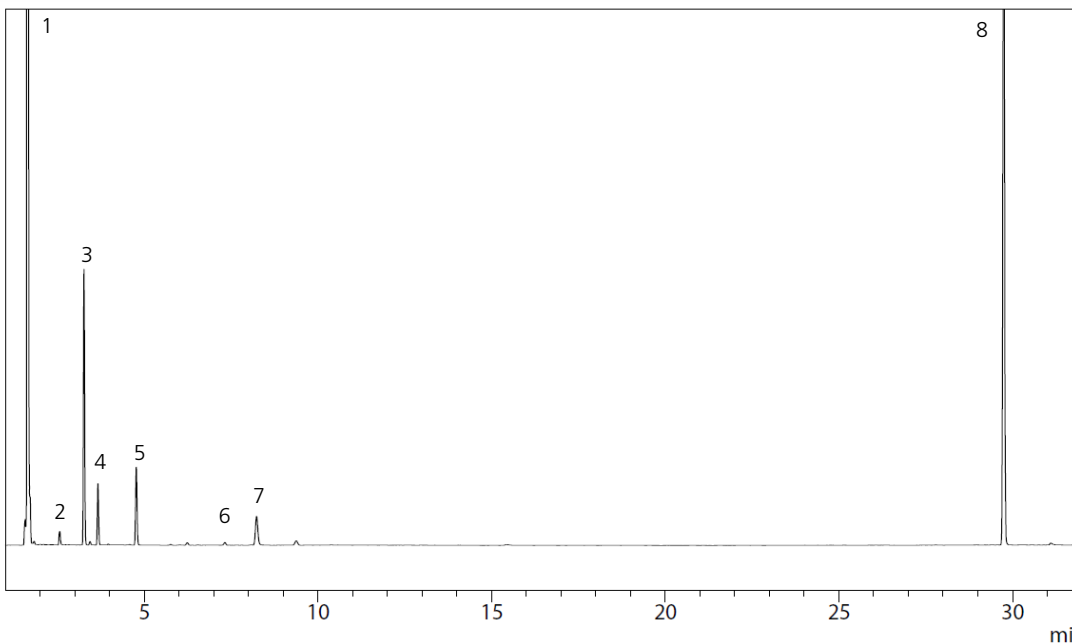
FID

SH Series

SH-PolarWax

**Analysis of Residual solvents USP 467
Class 2 MixB in pharmaceuticals**

Keywords: Procedure B, Water soluble



1. Hexane
2. 1,2-Dimethoxyethane
3. Trichloroethene
4. Chloroform
5. Methylbutylketone
6. Nitromethane
7. Pyridine
8. Tetraline

Instrument	: GC-2010 Plus™ + HS-20	HS-20	
Column	: SH-PolarWax (30 m x 0.32 mm I.D., df = 0.25 µm) , P/N : 221-75972-30	Oven temp.	: 80°C
Column temp.	: 50°C (20 min) - 6°C/min - 165°C (20 min)	Sample line temp.	: 110°C
Inj. vol.	:	Transfer line temp.	: 120°C
Split ratio	: 1:10	Vial stirring	: Off
Inj. temp.	: 140 °C	Vial vol.	: 20 mL
Carrier gas	: He, 35 cm/s, linear velocity	Vial heat-retention time	: 60 min
Detector	: FID at 250°C	Vial pressure time	: 1 min
FID H ₂ flow rate	: 40 mL/min	Vial pressure	: 75 kPa
FID make up flow rate	: He, 30 mL/min	Loading time	: 0.5 min
FID air flow rate	: 400 mL/min	Needle flush time	: 20 min

CoreFocus and GC-2010 Plus is a trademark of Shimadzu Corporation or its affiliated companies in Japan and/or other countries.

Shimadzu Corporation
www.shimadzu.com/an/

For Research Use Only. Not for use in diagnostic procedures.

This publication may contain references to products that are not available in your country. Please contact us to check the availability of these products in your country.

The content of this publication shall not be reproduced, altered or sold for any commercial purpose without the written approval of Shimadzu.

Company names, products/service names and logos used in this publication are trademarks and trade names of Shimadzu Corporation, its subsidiaries or its affiliates, whether or not they are used with trademark symbol "TM" or "®". Third-party trademarks and trade names may be used in this publication to refer to either the entities or their products/services, whether or not they are used with trademark symbol "TM" or "®".

Shimadzu disclaims any proprietary interest in trademarks and trade names other than its own.

The information contained herein is provided to you "as is" without warranty of any kind including without limitation warranties as to its accuracy or completeness. Shimadzu does not assume any responsibility or liability for any damage, whether direct or indirect, relating to the use of this publication. This publication is based upon the information available to Shimadzu on or before the date of publication, and subject to change without notice.