



Alcohols

Determination of dimethylsulfide in beer

Application Note

Food Testing & Agriculture

Authors

Agilent Technologies, Inc.

Introduction

Gas chromatography using an Agilent CP-Wax 52 CB column identifies dimethylsulfide in a sample of beer in 15 minutes.



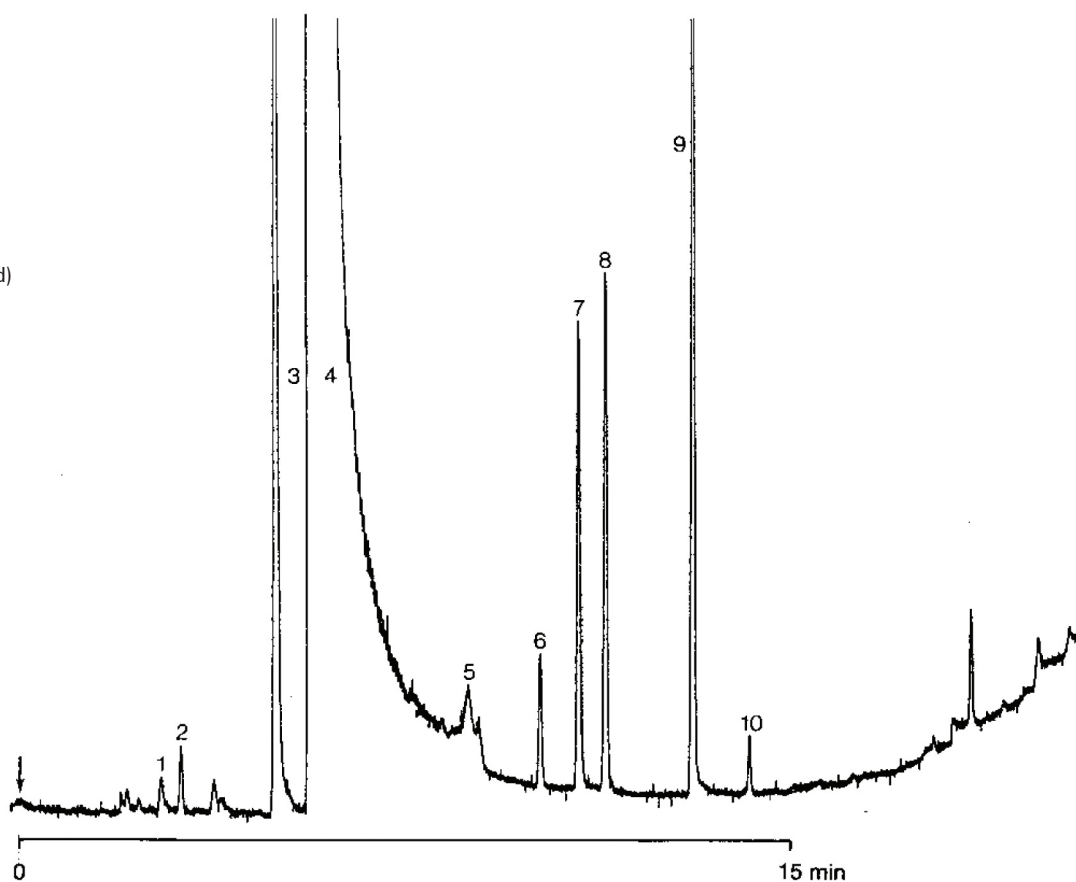
Agilent Technologies

Conditions

Technique : GC-capillary
Column : Agilent CP-Wax 52 CB, 0.32 mm x 50 m fused silica
WCOT CP-Wax 52 CB (1.2 μ m) (Part no. CP7773)
Temperature : 60 °C \rightarrow 70 °C, 2 °C/min \rightarrow 200 °C/min, 10 °C/min
Carrier Gas : H₂, 30 kPa (0.3 bar), 32 cm/s
Injector : Splitter, 10 mL/min
T = 200 °C
Detector : FID, 1 x 10⁻¹² Afs
T = 250 °C
Sample Size : 500 μ L

Peak identification

1. acetaldehyde
2. dimethylsulfide
3. ethylacetate
4. ethanol
5. n-propanol
6. isobutanol
7. 2-pentanol (internal standard)
8. isoamylacetate
9. isoamylalcohol
10. amylalcohol



www.agilent.com/chem

This information is subject to change without notice.

© Agilent Technologies, Inc. 2011

Printed in the USA

31 October, 2011

First published prior to 11 May, 2010

A00006



Agilent Technologies