

Solvents

Separation of amines

Application Note

Environmental

Authors

Agilent Technologies, Inc.

Introduction

Gas chromatography with an Agilent CP-Select 624 CB column separates 11 amines in 12 minutes.

The unique selectivity of the CP-Select 624 CB stationary phase enables separation of almost any type of solvent.



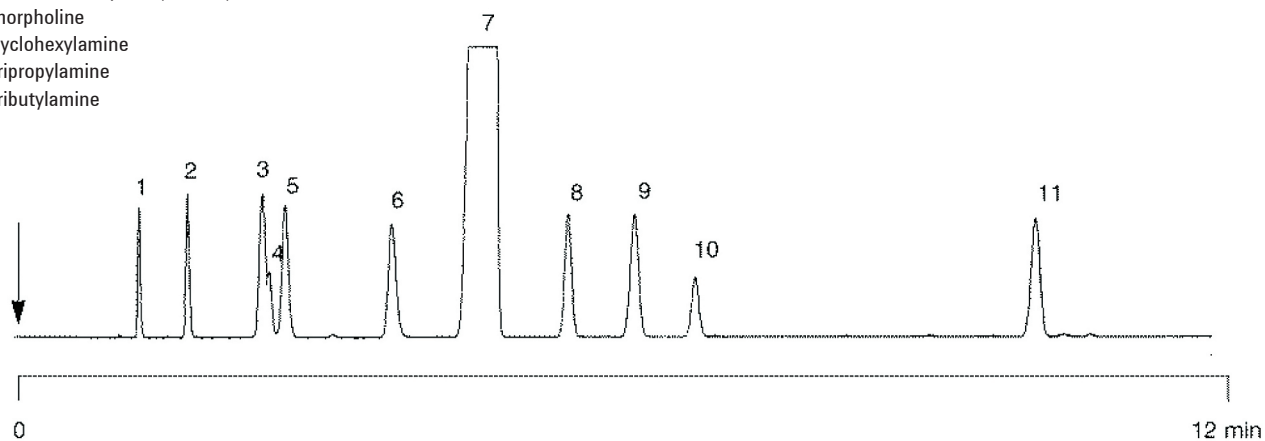
Agilent Technologies

Conditions

Technique : GC-wide-bore
Column : Agilent CP-Select 624 CB fused silica WCOT
30 m x 0.53 mm, fused silica WCOT (df = 3.0 µm)
(Part no. CP7416)
Temperature : 50 °C → 200 °C. 10 °C/min
Carrier Gas : N₂, 10 mL/min
Injector : Direct,
T = 250 °C
Detector : FID
T = 250 °C
Sample Size : 0.02 µL
Solvent Sample : solvents mixture

Peak identification

1. isopropyl amine
2. diethylamine
3. diisopropylamine
4. triethylamine
5. 2-methoxyethylamine
6. dipropylamine
7. tetrachloroethylene (solvent)
8. morpholine
9. cyclohexylamine
10. tripropylamine
11. tributylamine



www.agilent.com/chem

This information is subject to change without notice.

© Agilent Technologies, Inc. 2011

Printed in the USA

31 October, 2011

First published prior to 11 May, 2010

A01414



Agilent Technologies