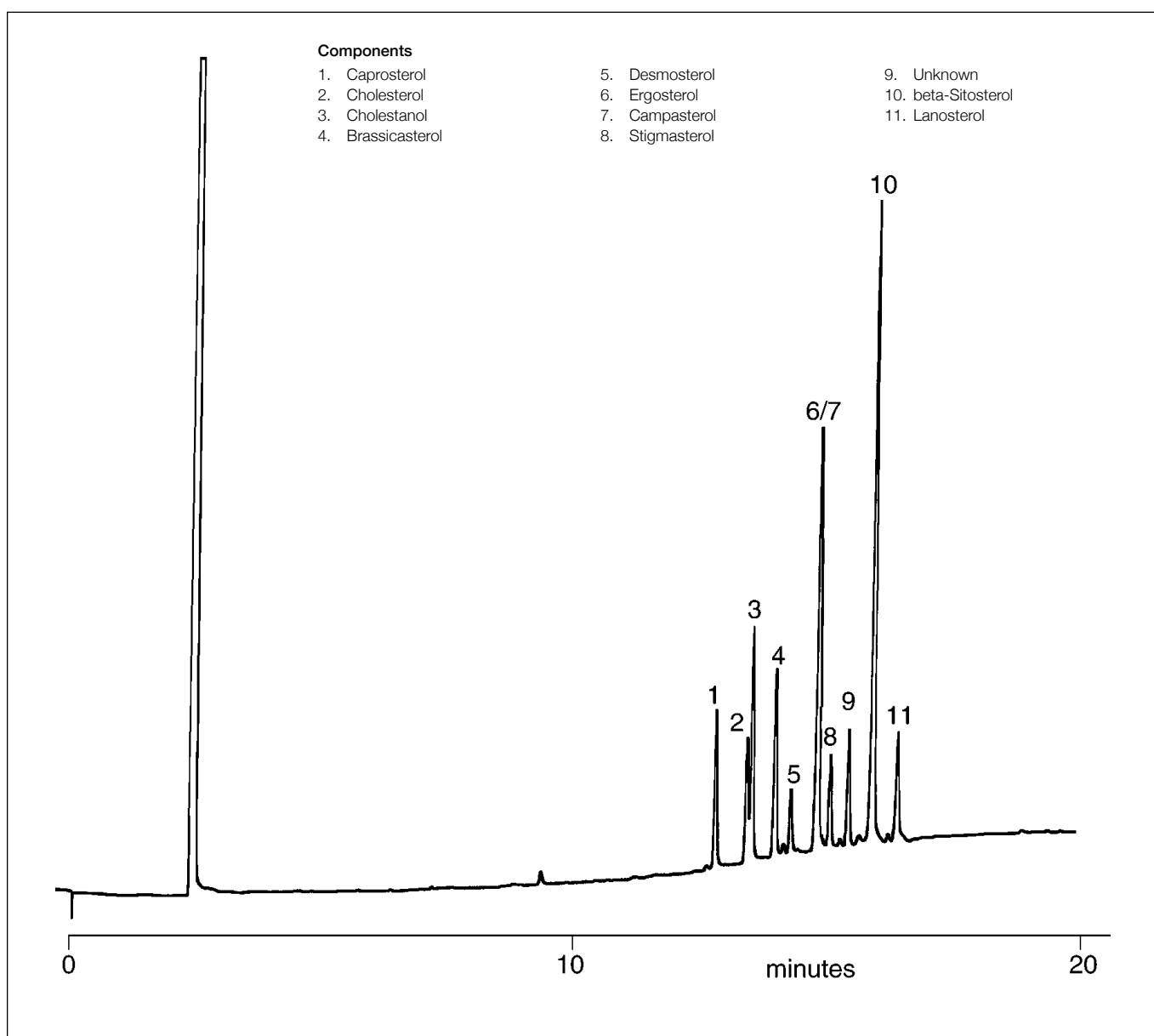


## Analysis of plant sterols

**BPX35**

<b>Column part number</b>	<b>054701</b>		
Phase	BPX35	Detector	FID, 360°C
Column	30 m x 0.25 mm x 0.25 µm	Injection mode	Split (100:1)
Initial temperature	280°C, 1 min	Carrier gas	He, 20 psi
Rate	4°C/min	Injection volume	1 µL
Final temperature	350°C, 5 min		


 For more information visit [www.trajanscimed.com](http://www.trajanscimed.com) or contact [techsupport@trajanscimed.com](mailto:techsupport@trajanscimed.com)