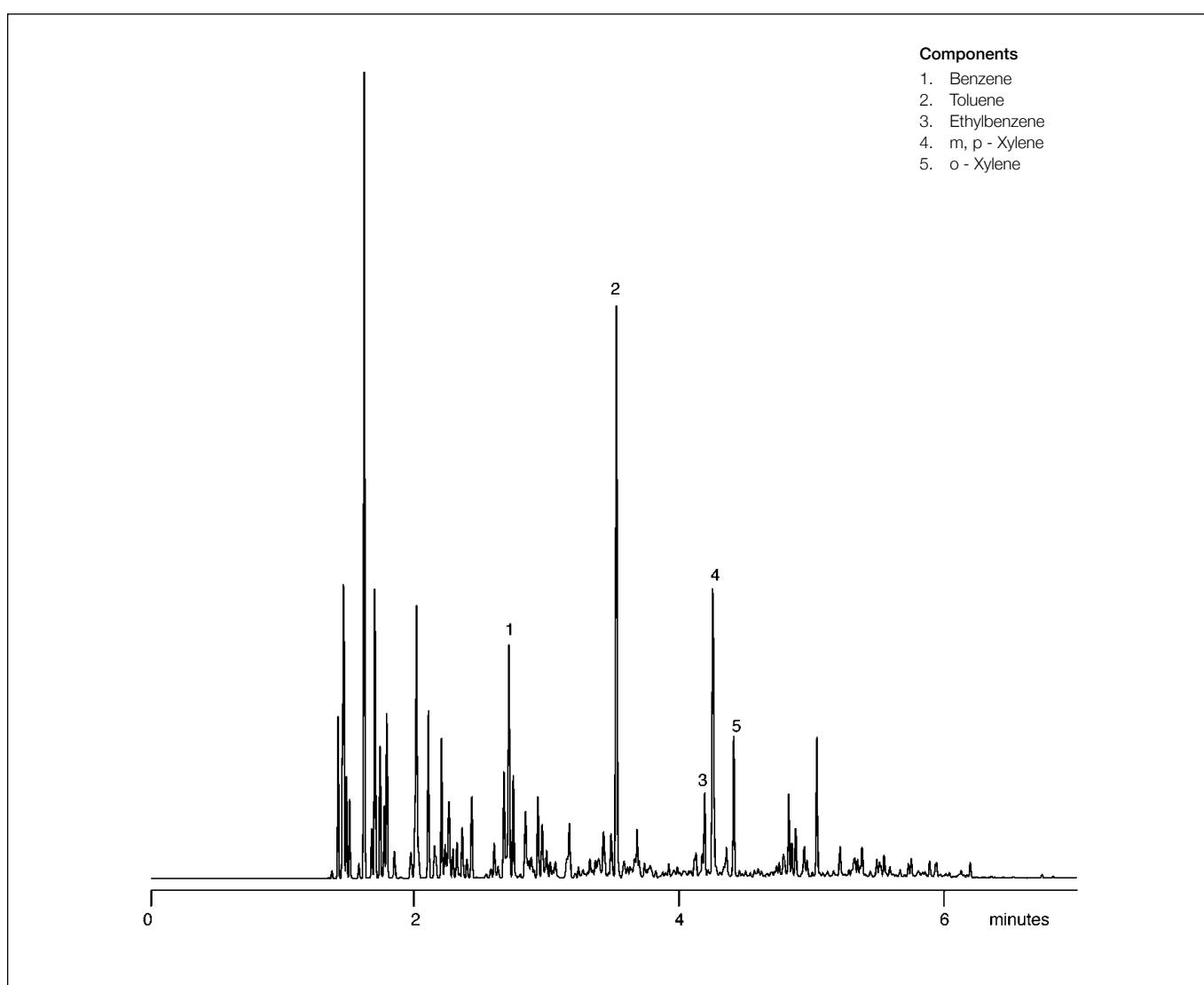


Analysis of unleaded gasoline

BPX5

Column part number	054101		
Phase	BPX5	Constant flow	On
Column	30 m x 0.25 mm x 0.25 μ m	Average linear velocity	30 cm/sec at 25°C
Sample	Split / Splitless	Injection mode	Split (150:1), 240°C
Initial temperature	25°C, 1 min	Injection volume	0.1 μ L
Rate	30°C/min	Liner type	FocusLiner® single taper
Final temperature	240°C, 1 min	Purge on time	NA
Carrier gas	He, 13.6 psi	Purge on (split) vent	200 mL/min
Carrier gas flow	1.34 mL/min	Detector	FID at 280°C


 For more information visit www.trajanscimed.com or contact techsupport@trajanscimed.com