



See What's Really There

Sorbent Pens™

For Next Generation Headspace Analysis

Featured Chromatograms

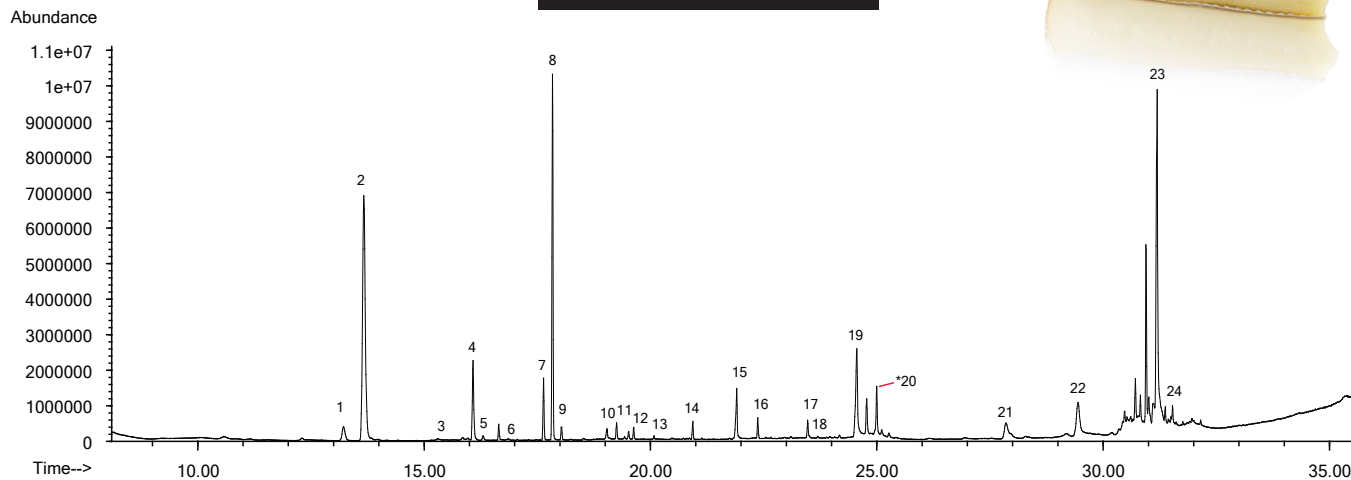


Brie Cheese Duplicate Analysis

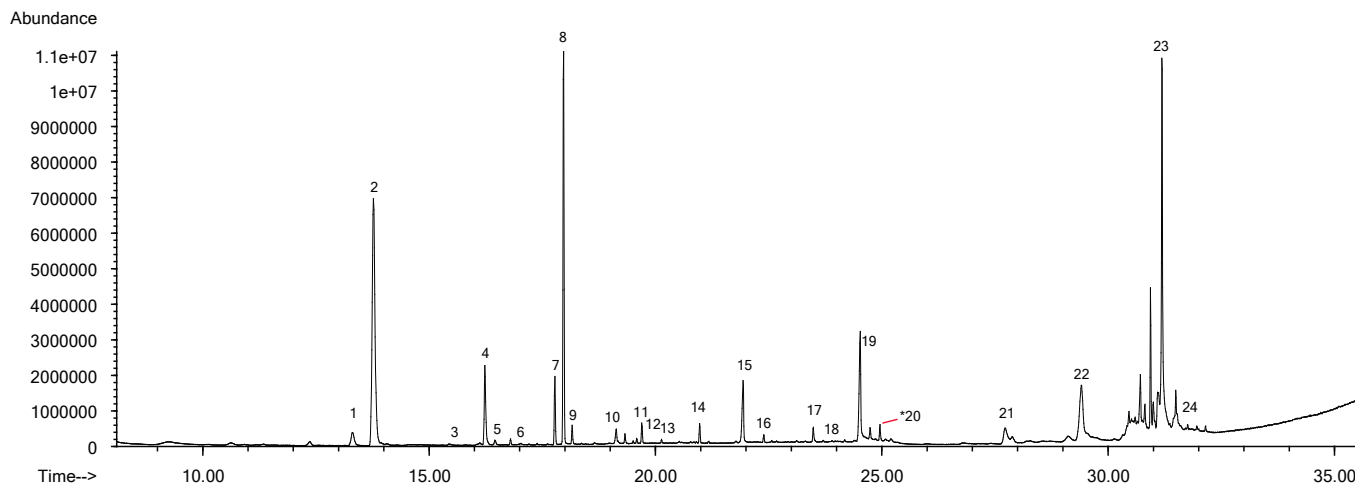
TIC: 16081501.D\data.ms



SORBENT PEN™ #1



SORBENT PEN™ #2



*Difference in Dodecanoic acid, ethyl ester caused by difficulty in maintaining exact amount of cheese sample oxidation from run to run, and expected variations in sample homogeneity.

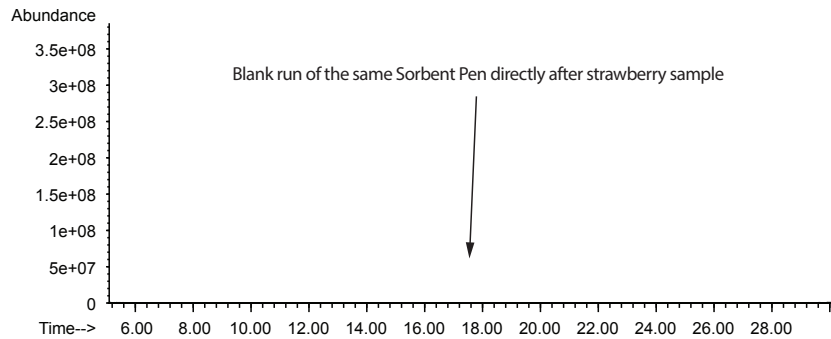
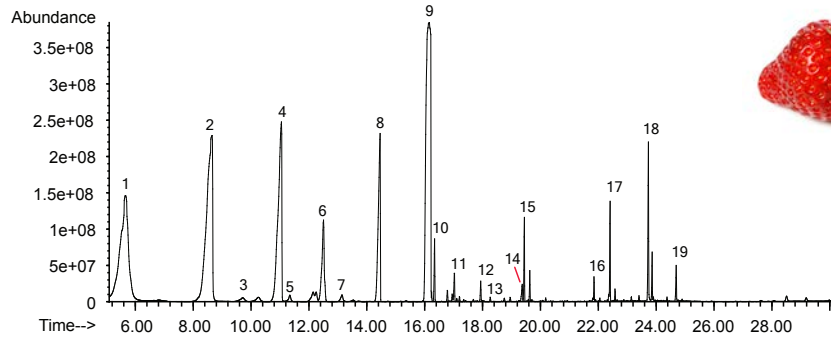
Instrument: 5800-SPDU (Sorbent Pen Desorption Unit)
Technique: VASE (Vacuum Assisted Sorbent Extraction)
Run date: August 15, 2016
Sample description: Brie Cheese
Weight of sample (g): 70g cheese in 140mL water, blended, 10.1025g taken
Sample conditions: blended + vac(30sec) + 50°C + 3 hr equilibration
Desorb conditions: 260°C for 5 min.
Split Mode: Splitless
Precolumn: DB1 5m length x 0.25mm ID, 0.25µm film
Column: DB1 30m length x 0.25mm ID, 0.5µm film
Carrier: He, 1.5cc/min. constant flow
Oven Temp: 40°C hold 5min., 6°C/min. to 95°C, 10°C/min. to 140°C, 10°C/min. to 325 hold 5min.
GCMS: Agilent 7890B/5977A
MS Operation: 34-450 amu, 1.8 scans/sec

1. 4-Heptanone
2. 2-Heptanone
3. Benzaldehyde
4. 2-Octanone
5. Hexanoic acid, ethyl ester
6. Benzeneacetaldehyde
7. 8-Nonen-2-one
8. 2-Nonanone
9. Nonanal
10. Octanoic acid
11. Octanoic acid, ethyl ester
12. Decanal
13. n-Octanoic acid isopropyl ester

14. 2-Undecanone
15. n-Decanoic acid
16. Decanoic acid, ethyl ester
17. 2H-Pyran-2-one, tetrahydro-6-pentyl-
18. 2-Tridecanone
19. Dodecanoic acid
20. Dodecanoic acid, ethyl ester
21. 2H-Pyran-2-one, 6-heptyltetrahydro-
22. Tetradecanoic acid
23. n-Hexadecanoic acid
24. Hexadecanoic acid, ethyl ester

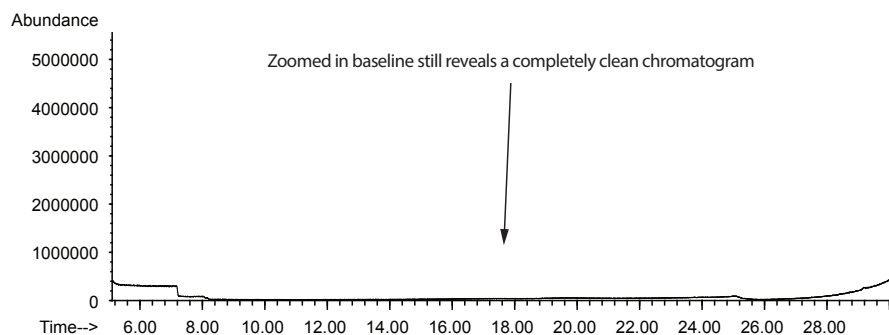
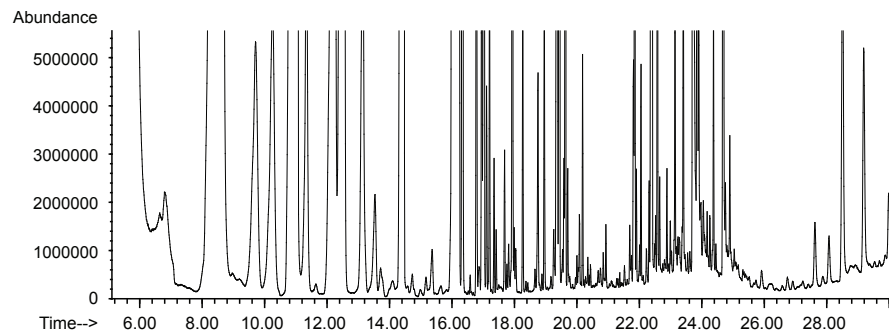
Extremely Clean Blank After Strawberry Analysis

TIC: 16080301.D\data.ms



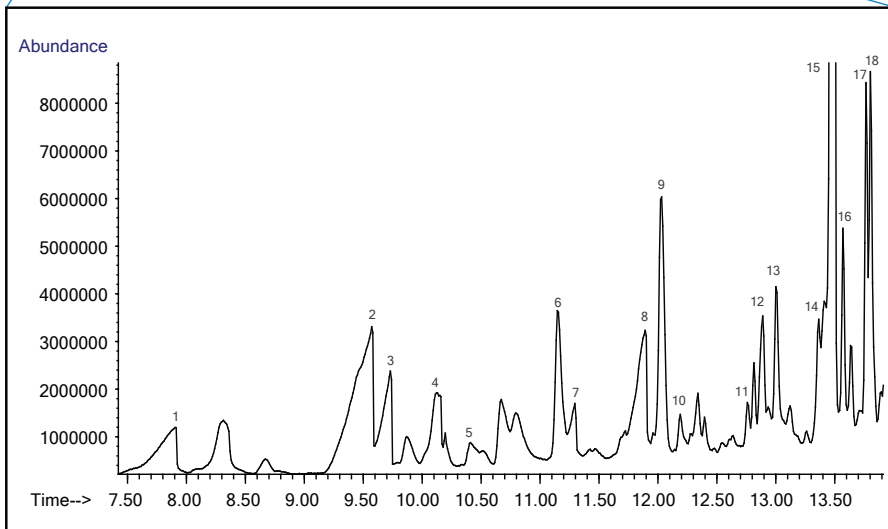
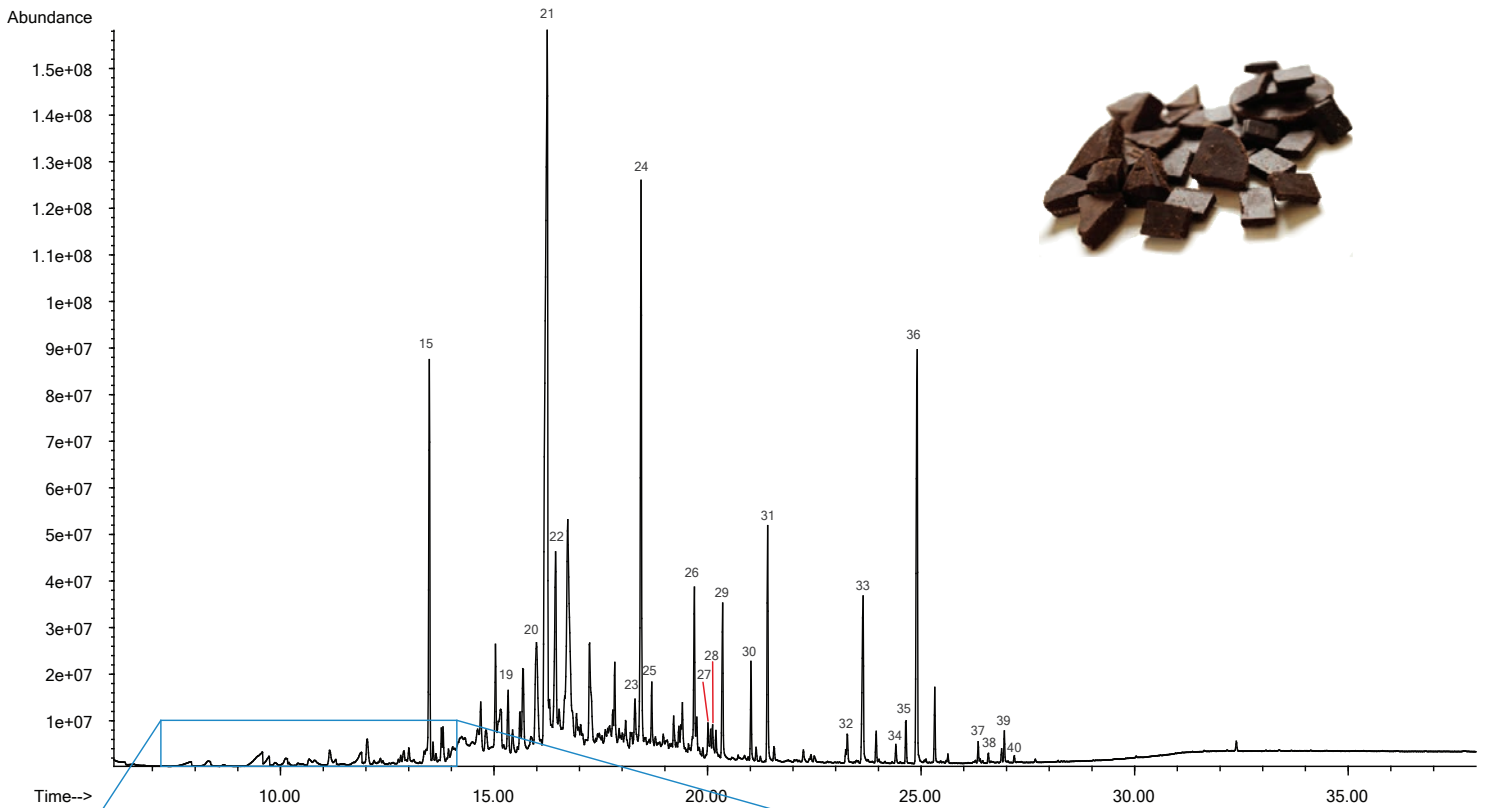
Instrument: 5800-SPDU (Sorbent Pen Desorption Unit)
Technique: VASE (Vacuum Assisted Sorbent Extraction)
Run date: August 3, 2016
Sample description: Fresh Strawberries
Weight of sample (g): 7.7425
Sample conditions: 5 hours equilibration
Desorb conditions: 260°C for 5 min.
Split Mode: Splitless
Precolumn: DB1 5m length x 0.25mm ID, 0.25µm film
Column: DB1 30m length x 0.25mm ID, 0.5µm film
Carrier: He, 1.5cc/min. constant flow
Oven Temp: 40°C hold 5min., 6°C/min. to 95°C, 10°C/min. to 140°C, 15°C/min. to 325 hold 5 min.
GCMS: Agilent 7890B/5977A
MS Operation: 34-450 amu, 1.8 scans/sec

- | | |
|---|--|
| 1. Ethyl acetate | 11. 3(2H)-Furanone, 4-methoxy-2,5-dimethyl- |
| 2. Butanoic acid methyl ester | 12. 1,6-Octadien-3-ol, 3,7-dimethyl- |
| 3. Propanoic acid, 2-methyl-, ethyl ester | 13. Octanoic acid, methyl ester |
| 4. Butanoic acid, ethyl ester | 14. Methyl salicylate |
| 5. Acetic acid, butyl ester | 15. Octanoic acid, ethyl ester |
| 6. Butanoic acid, 2-methyl-, ethyl ester | 16. Butanoic acid, octyl ester |
| 7. 1-Butanol, 3-methyl-, acetate | 17. Pentanoic acid, octyl ester |
| 8. Hexanoic acid, methyl ester | 18. 1,6,10-Dodecatrien-3-ol, 3,7,11-trimethyl- |
| 9. Hexanoic acid, ethyl ester | 19. .gamma.-Dodecalactone |
| 10. 2-Hexen-1-ol, acetate, (Z)- | |



Dark Chocolate Analysis

TIC: 161117_04.D\data.ms

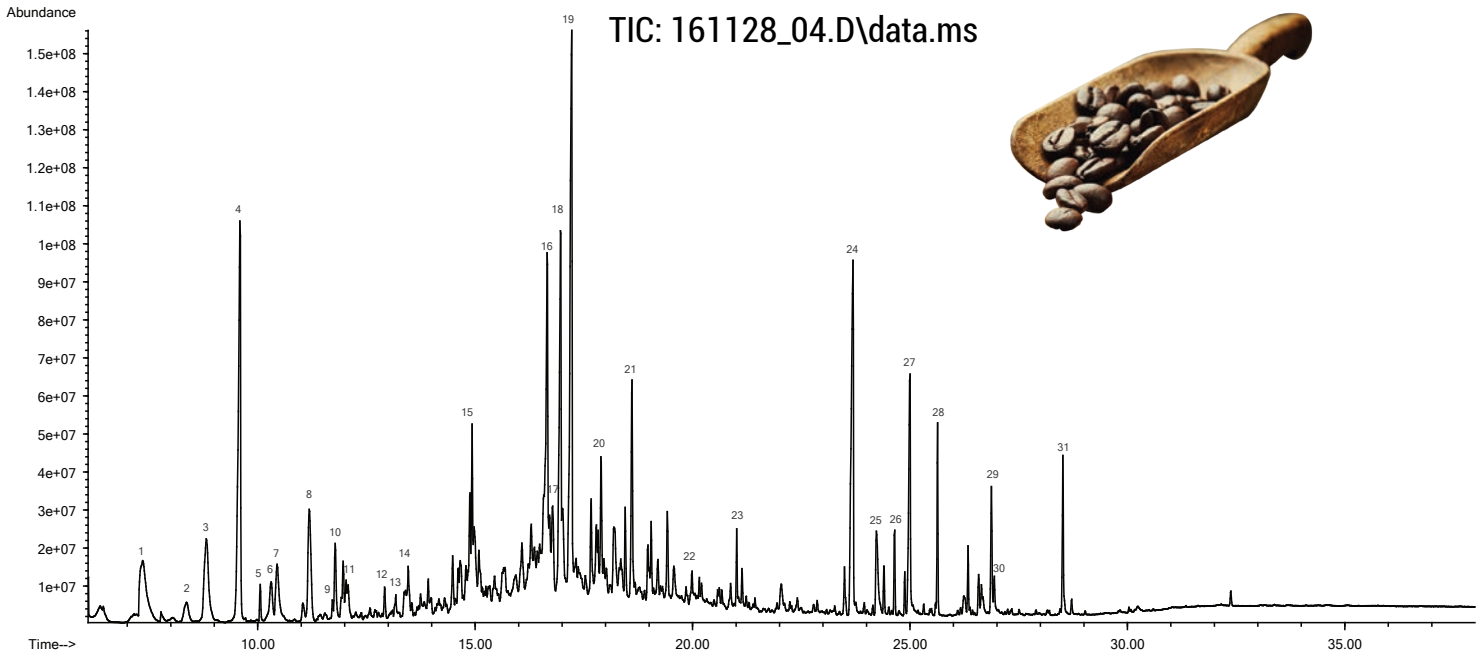


Instrument: 5800-SPDU (Sorbent Pen Desorption Unit)
Technique: VASE (Vacuum Assisted Sorbent Extraction)
Run date: November 17, 2016
Sample description: Dark Chocolate
Amount of sample (g): 1
Sample conditions: 40 mL vial with 15 hours equilibration at 25°C
Desorb conditions: 260°C for 5 min.
Split Mode: Splitless
Precolumn: DB1 5m length x 0.25mm ID, 0.25µm film
Column: DB1 30m length x 0.25mm ID, 0.5µm film
Carrier: He, 1.5cc/min. constant flow
Oven Temp: 40°C hold 5 min., 10°C/min. to 325°C, 325 hold 5 min. (solvent delay at 6 min.)
GCMS: Agilent 7890B/5977A
MS Operation: 34-450 amu, 1.8 scans/sec

- | | | | |
|---|--------------------------------------|--|---------------------------------------|
| 1. Propanoic acid, 2-methyl- | 11. D-Limonene | 21. Acetic acid, 2-phenylethyl ester | 31. Benzophenone |
| 2. Butanoic acid, 3-methyl- | 12. Ethanone, 1-(1H-pyrrol-2-yl)- | 22. Benzeneacetaldehyde, .alpha.-ethylidene- | 32. Tetradecanoic acid, ethyl ester |
| 3. Butanoic acid, 2-methyl- | 13. Acetophenone | 23. Vanillin | 33. Caffeine |
| 4. Heptanal | 14. Pyrazine, 3-ethyl-2,5-dimethyl- | 24. Benzoic acid, pent-2-yl ester | 34. 2-Heptadecanone |
| 5. Pyrazine, 2,5-dimethyl- | 15. Pyrazine, tetramethyl- | 25. Tetradecane | 35. Hexadecanoic acid, methyl ester |
| 6. Benzaldehyde | 16. 2-Nonanone | 26. 5-Methyl-2-phenyl-2-hexenal | 36. Di-sec-butyl phthalate |
| 7. Pentanoic acid, 4-methyl- | 17. Nonanal | 27. Pentadecane | 37. 9-Octadecenoic acid, methyl ester |
| 8. Hexanoic acid | 18. 1,6-Octadien-3-ol, 3,7-dimethyl- | 28. Butylated Hydroxytoluene | 38. Linoleic acid ethyl ester |
| 9. Pyrazine, trimethyl- | 19. Octanoic acid, ethyl ester | 29. 1H-2-Benzopyran-1-one, 3,4-dihydro-8-hydroxy-3-methyl- | 39. 9-Octadecenoic acid, (E)- |
| 10. Propanoic acid, 2-hydroxy-, butyl ester | 20. Benzeneacetic acid, ethyl ester | 30. Dodecanoic acid, ethyl ester | 40. Octadecanoic acid, ethyl ester |

Coffee Analysis

TIC: 161128_04.D\data.ms

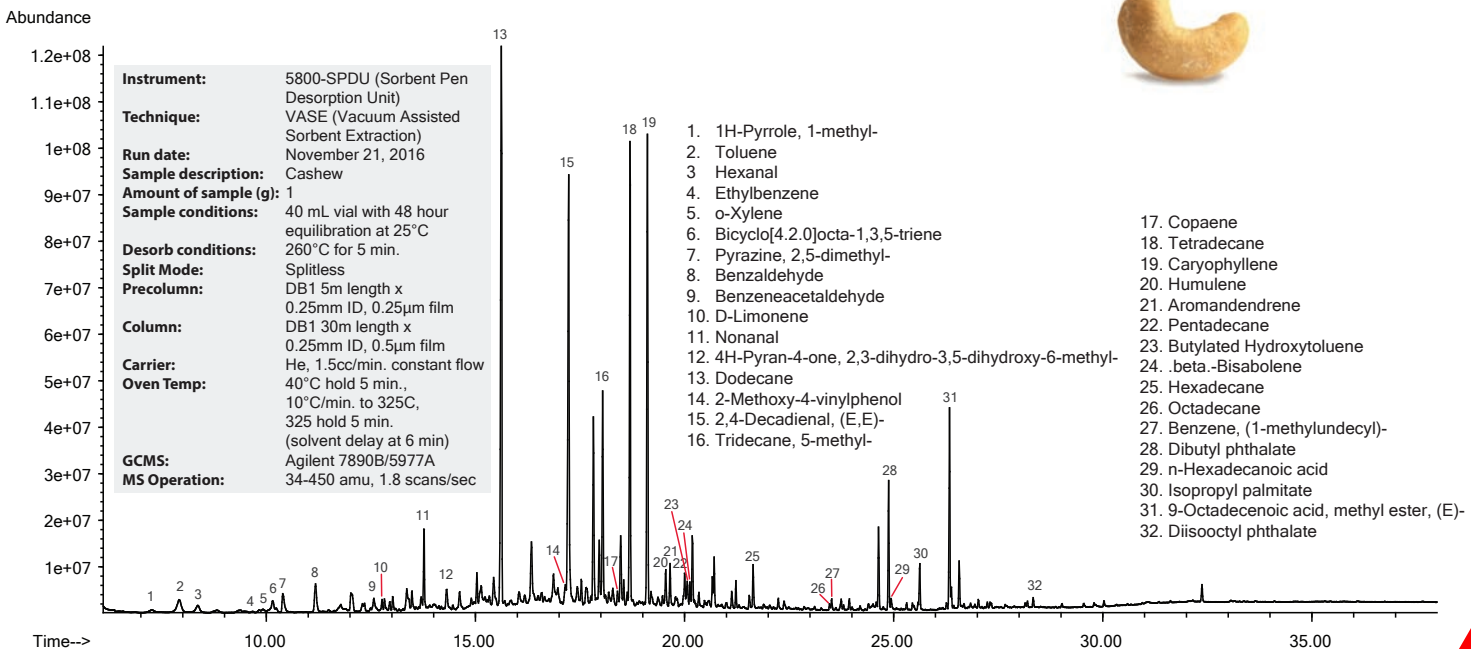


Instrument: 5800-SPDU (Sorbent Pen Desorption Unit)
Technique: VASE (Vacuum Assisted Sorbent Extraction)
Run date: November 28, 2016
Sample description: Breakroom Coffee
Amount of sample (g): 2
Sample conditions: 20 mL vial with 3 hour equilibration at 60°C
Desorb conditions: 260°C for 5 min.
Split Mode: Splitless
Precolumn: DB1 5m length x 0.25mm ID, 0.25µm film
Column: DB1 30m length x 0.25mm ID, 0.5µm film
Carrier: He, 1.5cc/min. constant flow
Oven Temp: 40°C hold 5 min., 10°C/min. to 325C, 325 hold 5 min. (solvent delay at 6 min)
GCMS: Agilent 7890B/5977A
MS Operation: 34-450 amu, 1.8 scans/sec

1. Pyridine
2. 3(2H)-Furanone, dihydro-2-methyl-
3. 3-Furaldehyde
4. 2-Furanmethanol
5. Butyrolactone
6. Ethanone, 1-(2-furanyl)-
7. Pyrazine, 2,5-dimethyl-
8. 2-Furancarboxaldehyde, 5-methyl-
9. Phenol
10. 2-Furanmethanol, acetate
11. 1H-Pyrrole-2-carboxaldehyde
12. Ethanone, 1-(1H-pyrrol-2-yl)-
13. Ethanone, 1-(1-methyl-1H-pyrrol-2-yl)-
14. Phenol, 2-methoxy-
15. 1H-Pyrrole, 1-(2-furanylmethyl)-
16. Phenol, 4-ethyl-2-methoxy-
17. Indole
18. Furan, 2,2'-[oxybis(methylene)]bis-
19. 2-Methoxy-4-vinylphenol
20. Benzene, 4-ethenyl-1,2-dimethoxy-
21. 1H-Pyrrole, 1-(2-furanylmethyl)-
22. Phenol, 2,5-bis(1,1-dimethylethyl)-
23. Dodecanoic acid, ethyl ester
24. Caffeine
25. 1-Hexadecanol
26. Hexadecanoic acid, methyl ester
27. n-Hexadecanoic acid
28. Isopropyl palmitate
29. Octadecanoic acid
30. Hexadecanamide
31. 9-Octadecenamide, (Z)-

Cashew Analysis

TIC: 161121_03.D\data.ms

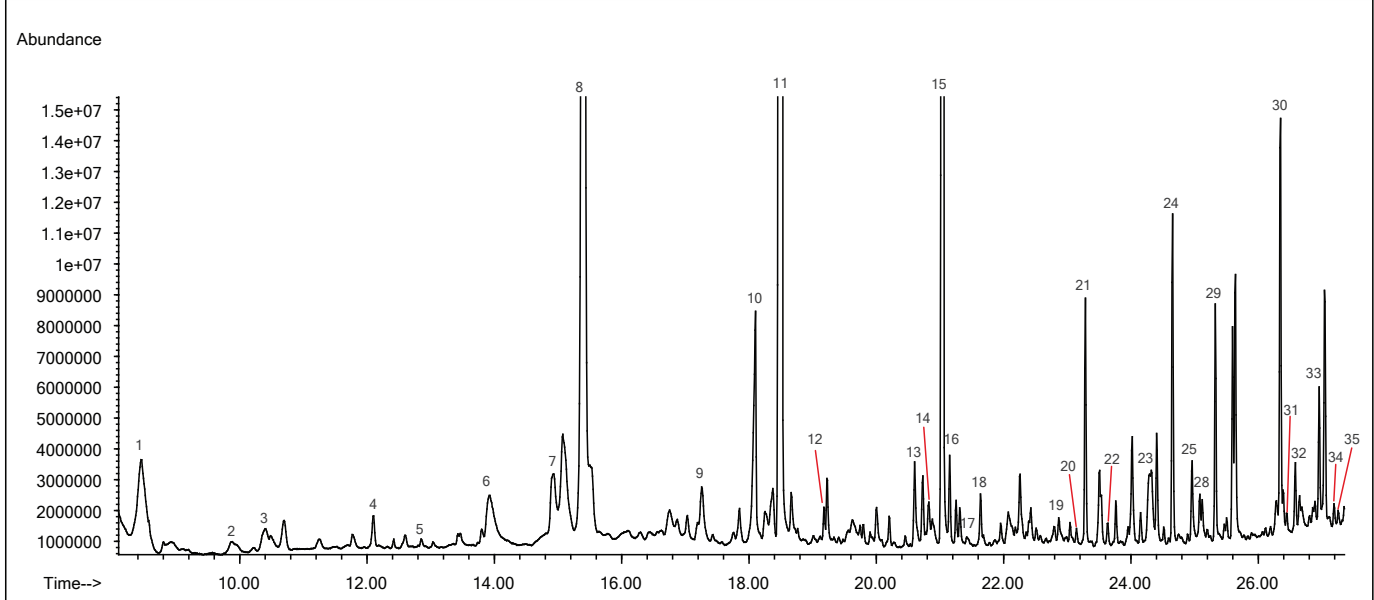
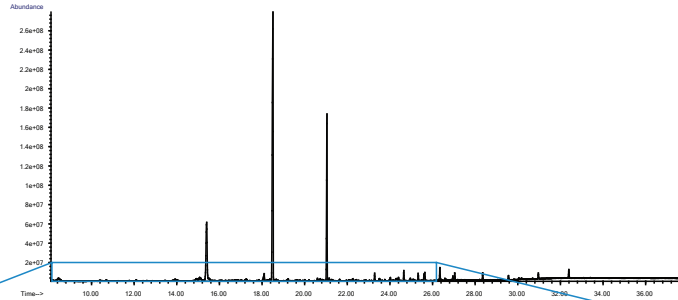


Instrument: 5800-SPDU (Sorbent Pen Desorption Unit)
Technique: VASE (Vacuum Assisted Sorbent Extraction)
Run date: November 21, 2016
Sample description: Cashew
Amount of sample (g): 1
Sample conditions: 40 mL vial with 48 hour equilibration at 25°C
Desorb conditions: 260°C for 5 min.
Split Mode: Splitless
Precolumn: DB1 5m length x 0.25mm ID, 0.25µm film
Column: DB1 30m length x 0.25mm ID, 0.5µm film
Carrier: He, 1.5cc/min. constant flow
Oven Temp: 40°C hold 5 min., 10°C/min. to 325C, 325 hold 5 min. (solvent delay at 6 min)
GCMS: Agilent 7890B/5977A
MS Operation: 34-450 amu, 1.8 scans/sec

1. 1H-Pyrrole, 1-methyl-
2. Toluene
3. Hexanal
4. Ethylbenzene
5. o-Xylene
6. Bicyclo[4.2.0]octa-1,3,5-triene
7. Pyrazine, 2,5-dimethyl-
8. Benzaldehyde
9. Benzeneacetaldehyde
10. D-Limonene
11. Nonanal
12. 4H-Pyran-4-one, 2,3-dihydro-3,5-dihydroxy-6-methyl-
13. Dodecane
14. 2-Methoxy-4-vinylphenol
15. 2,4-Decadienal, (E,E)-
16. Tridecane, 5-methyl-
17. Copaene
18. Tetradecane
19. Caryophyllene
20. Humulene
21. Aromandendrene
22. Pentadecane
23. Butylated Hydroxytoluene
24. beta.-Bisabolene
25. Hexadecane
26. Octadecane
27. Benzene, (1-methylundecyl)-
28. Dibutyl phthalate
29. n-Hexadecanoic acid
30. Isopropyl palmitate
31. 9-Octadecenoic acid, methyl ester, (E)-
32. Diisooctyl phthalate

Rum Analysis

TIC: 161116_07.D\data.ms

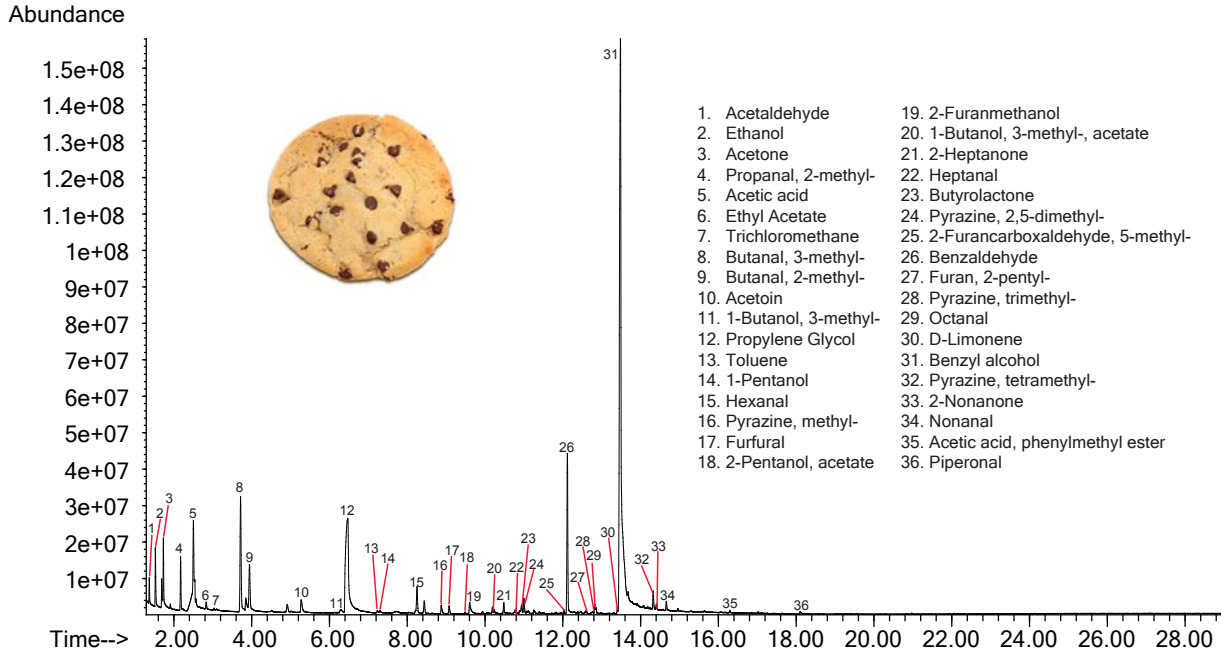


Instrument: 5800-SPDU (Sorbent Pen Desorption Unit)
Technique: VASE (Vacuum Assisted Sorbent Extraction)
Run date: November 16, 2016
Sample description: 1:1 Rum (50µl Rum + 50µl Water)
Amount of sample (mL): 50µl
Sample conditions: 20mL vial with 15 hour equilibration at 25°C 260°C for 5 min.
Desorb conditions: Splitless
Split Mode: DB1 5m length x 0.25mm ID, 0.25µm film
Precolumn: DB1 30m length x 0.25mm ID, 0.5µm film
Column: He, 1.5cc/min. constant flow
Carrier: 40°C hold 5 min., 10°C/min. to 300°C, hold 7 min. (solvent delay at 8 min)
Oven Temp: Agilent 7890B/5977A
GCMS: 34-450 amu, 1.8 scans/sec

- 3(2H)-Furanone, dihydro-2-methyl-
- 1-Hexanol
- Ethanone, 1-(2-furanyl)-
- Hexanoic acid, ethyl ester
- Pentanoic acid, 4-oxo-, ethyl ester
- Phenylethyl Alcohol
- Butanedioic acid, diethyl ester
- Octanoic acid, ethyl ester
- trans-3-Methyl-4-octanolide
- n-Decanoic acid
- Decanoic acid, ethyl ester
- Octanoic acid, 3-methylbutyl ester
- Dodecanoic acid
- Benzoic acid, 4-hydroxy-3-methoxy-, ethyl ester
- Dodecanoic acid, ethyl ester
- Pentanoic acid, 2,2,4-trimethyl-3-carboxyisopropyl, isobutyl ester
- Benzophenone
- Pentadecanoic acid, 3-methylbutyl ester
- Tetradecanoic acid
- Ethyl 9-tetradecenoate
- Pentadecanoic acid, ethyl ester
- Isopropyl myristate
- 1-Hexadecanol
- Pentadecanoic acid, 14-methyl-, methyl ester
- n-Hexadecanoic acid
- Ethyl 9-hexadecenoate
- Hexadecanoic acid, ethyl ester
- 1-Tetradecyl acetate
- Isopropyl palmitate
- 9-Octadecenoic acid (Z)-, methyl ester
- Heneicosane
- Methyl stearate
- Ethyl 9-hexadecenoate
- Octadecanoic acid, ethyl ester
- Benzoic acid, tridecyl ester

Fresh Cookie Analysis

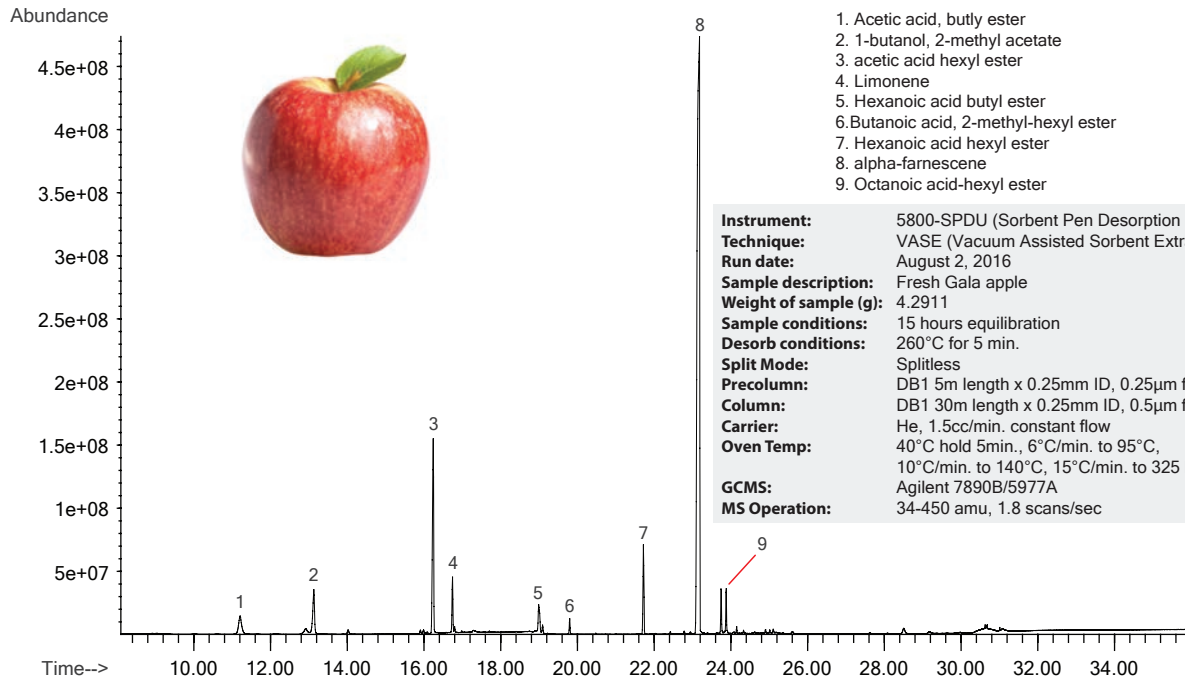
TIC: 170428_08.D\data.ms



Instrument: 5800-SPDU (Sorbent Pen Desorption Unit)
Technique: VASE (Vacuum Assisted Sorbent Extraction)
Run date: April 28, 2017
Sample description: Fresh Baked Chocolate Chip Cookie
Weight of sample (g): 1.4723
Sample conditions: 5hrs@25C 100rpm + preheat 2min + split 30:1
Split Mode: Split 2, 30:1
Column: Db-5MS UI 30 x 0.250 x 0.50
Carrier: Helium 1.5mL/min
Oven Temp: 35C hold 5min, 10C/min to 150, 20C/min to 300C, hold 5min (29min run time)
GCMS: Agilent 7890B GC 5977A MS
MS Operation: 33-450, 3 scans/sec

Fresh Apple Analysis

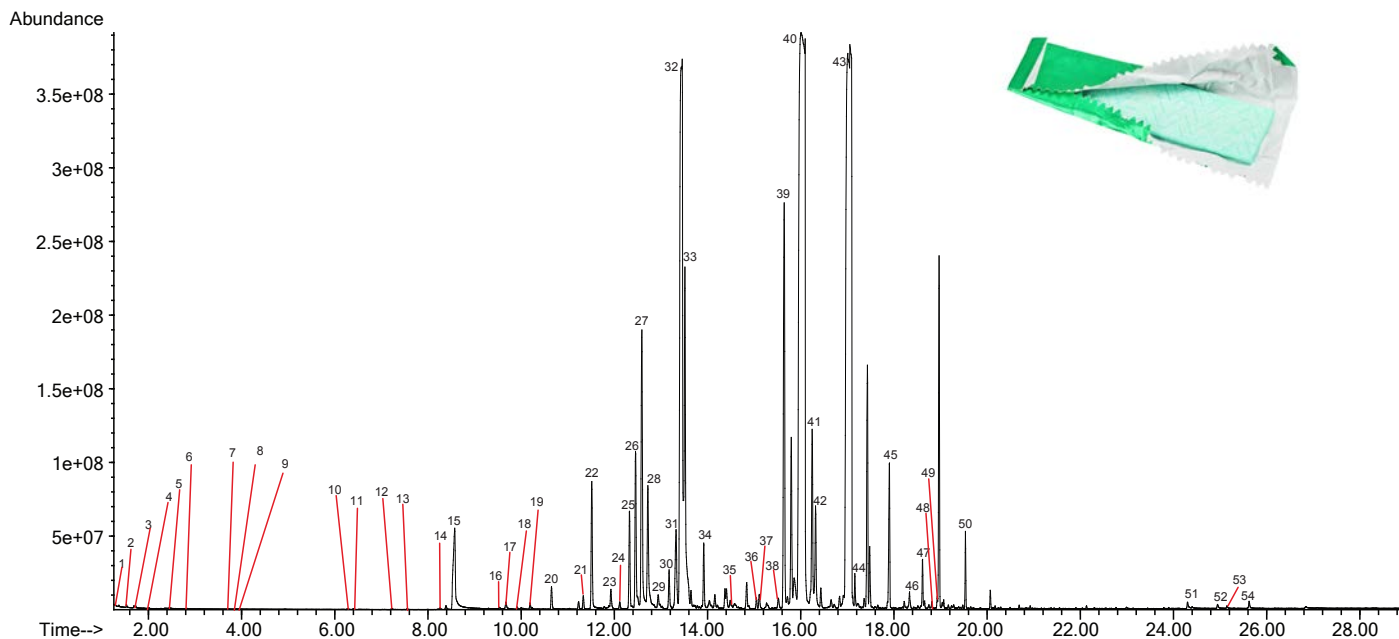
TIC: 16080202.D\data.ms



Instrument: 5800-SPDU (Sorbent Pen Desorption Unit)
Technique: VASE (Vacuum Assisted Sorbent Extraction)
Run date: August 2, 2016
Sample description: Fresh Gala apple
Weight of sample (g): 4.2911
Sample conditions: 15 hours equilibration
Desorb conditions: 260°C for 5 min.
Split Mode: Splitless
Precolumn: DB1 5m length x 0.25mm ID, 0.25µm film
Column: DB1 30m length x 0.25mm ID, 0.5µm film
Carrier: He, 1.5cc/min. constant flow
Oven Temp: 40°C hold 5min., 6°C/min. to 95°C, 10°C/min. to 140°C, 15°C/min. to 325 hold 5min.
GCMS: Agilent 7890B/5977A
MS Operation: 34-450 amu, 1.8 scans/sec

Gum Analysis

TIC: 170426_08.D\data.ms

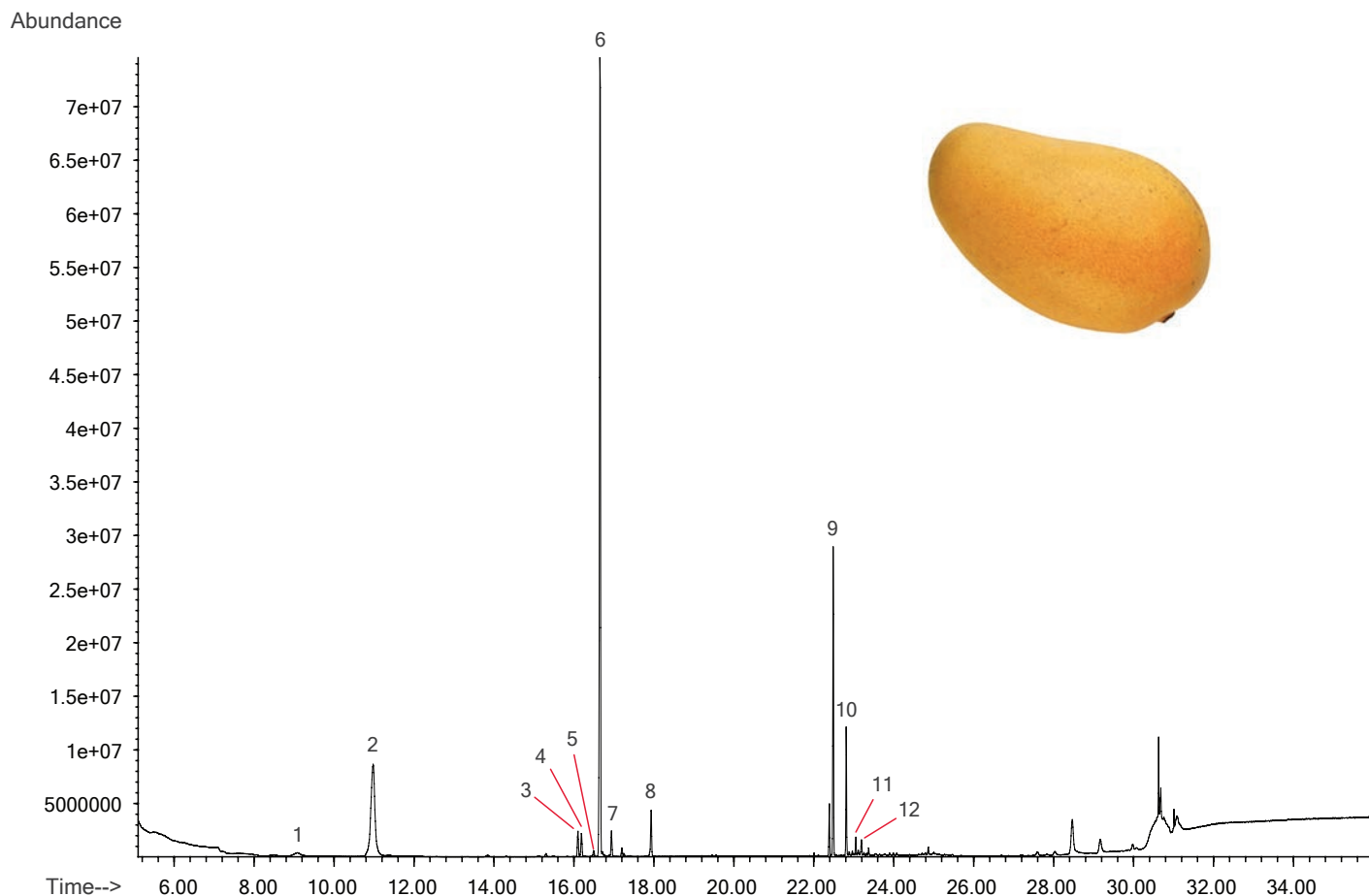


Instrument: 5800-SPDU (Sorbent Pen Desorption Unit)
Technique: VASE (Vacuum Assisted Sorbent Extraction)
Run Date: April 26, 2017
Sample Description: Gum
Weight of Sample (g): 0.0745
Sample Conditions: 20mL vial with 1 hour at 25°C 100rpm
Split Mode: Split 2, 30:1
Column: Db-5MS UI 30 x 0.250 x 0.50
Carrier: Helium 1.5mL/min
Oven Temp: 35°C hold 5 min., 10°C/min. to 150, 20°C/min to 300°C, hold 5min (29 min. run time)
GCMS: Agilent 7890B GC 5977A MS
MS Operation: 33-450, 3 scans/sec

- | | |
|---|--|
| 1. Acetaldehyde | 28. 3-Octanol |
| 2. Ethanol | 29. 1,3,8-p-Menthatriene |
| 3. Acetone | 30. 1,3-Cyclohexadiene, 1-methyl-4-(1-methylethyl)- |
| 4. Carbon disulfide | 31. o-Cymene |
| 5. Methyl vinyl ketone | 32. D-Limonene |
| 6. Ethyl Acetate | 33. Eucalyptol |
| 7. Butanal, 3-methyl- | 34. .gamma.-Terpinene |
| 8. 1-Butanol | 35. Benzene, 1-methyl-4-(1-methylethenyl)- |
| 9. Butanal, 2-methyl- | 36. 2,4,6-Octatriene, 2,6-dimethyl-, (E,Z)- |
| 10. 1-Butanol, 3-methyl- | 37. Pentanedioic acid, dimethyl ester |
| 11. 1-Butanol, 2-methyl- | 38. dl-Isopulegol |
| 12. Toluene | 39. l-Menthone |
| 13. Butanoic acid, 2-methyl-, methyl ester | 40. Levomenthol |
| 14. Butanoic acid, ethyl ester | 41. Methyl salicylate |
| 15. Propanoic acid, 2-hydroxy-, ethyl ester | 42. Cyclohexanone, 2-methyl-5-(1-methylethenyl)-, trans- |
| 16. Butanoic acid, 2-methyl-, ethyl ester | 43. D-Carvone |
| 17. 3-Hexen-1-ol, (Z)- | 44. 2-Cyclohexen-1-one, 3-methyl-6-(1-methylethyl)- |
| 18. 2-Hexen-1-ol, (E)- | 45. Triacetin |
| 19. 1-Butanol, 3-methyl-, acetate | 46. 2-Allyl-4-methylphenol |
| 20. Furan, 2,5-diethyltetrahydro- | 47. (-).beta.-Bourbonene |
| 21. .alpha.-Phellandrene | 48. Isocaryophyllene |
| 22. .alpha.-Pinene | 49. .beta.-ylangene |
| 23. Cyclohexanone, 3-methyl- | 50. Butylated Hydroxytoluene |
| 24. Benzaldehyde | 51. 9-Octadecenamamide, (Z)- |
| 25. .beta.-Phellandrene | 52. Erucic acid |
| 26. .beta.-Pinene | 53. Diisooctyl phthalate |
| 27. .beta.-Myrcene | 54. 13-Docosenamamide, (Z)- |

Mango Analysis

TIC: 16080303.D\data.ms

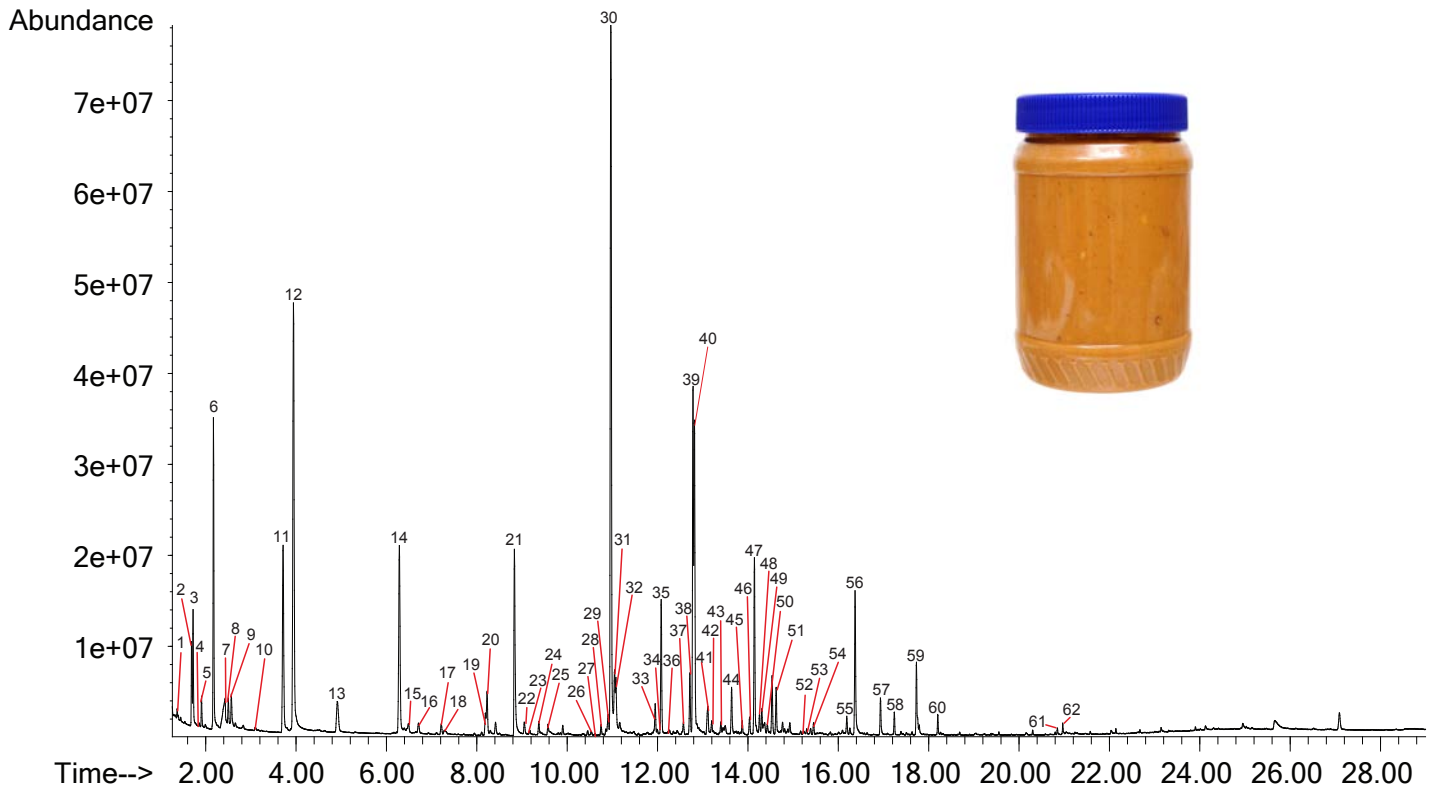


Instrument: 5800-SPDU (Sorbent Pen Desorption Unit)
Technique: VASE (Vacuum Assisted Sorbent Extraction)
Run Date: August 3, 2016
Sample Description: Fresh Mango
Weight of Sample (g): 7.7366
Sample Conditions: 40mL vial with 15 hours equilibration
Desorb conditions: 260°C for 5 min.
Split Mode: Splitless
Precolumn: DB1 5m length x 0.25mm ID, 0.25µm film
Column: DB1 30m length x 0.25mm ID, 0.5µm film
Carrier: He, 1.5cc/min. constant flow
Oven Temp: 40°C hold 5min., 6°C/min. to 95°C, 10°C/min. to 140°C, 10°C/min. to 325 hold 5min.
GCMS: Agilent 7890B/5977A
MS Operation: 34-450 amu, 1.8 scans/sec

1. Disulfide, dimethyl
2. Butanoic acid, ethyl ester
3. Butanoic acid, butyl ester
4. .beta.-Myrcene
5. .alpha.-Phellandrene
6. 3-Carene
7. Limonene
8. Terpinolene
9. Caryophyllene
10. Humulene
11. .beta.-copaene
12. Naphthalene, 1,2,3,5,6,7,8,8a-octahydro-1,8a-dimethyl-7-(1-methylethenyl)-, [1R-(1.alpha.,7.beta.,8a.alpha.)]-

Peanut Butter Analysis

TIC: 170503_04.D\data.ms



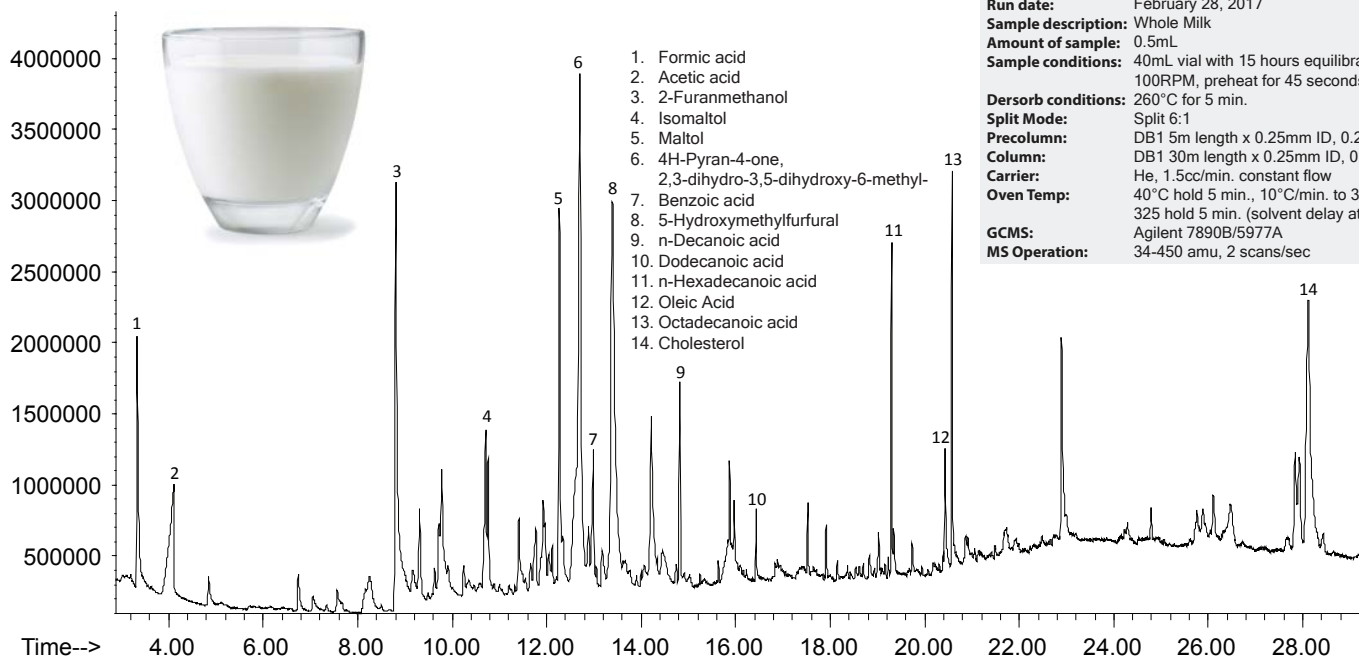
Instrument: 5800-SPDU (Sorbent Pen Desorption Unit)
Technique: VASE (Vacuum Assisted Sorbent Extraction)
Run Date: May 3, 2017
Sample Description: Peanut Butter, creamy, 16oz., lot # 69504004
Weight of Sample (g): 0.5386
Sample Conditions: 40mL vial with 15 hours at 25°C 100rpm
+ split 30:1 + preheat 2 min
Split Mode: Agilent Splitter, 30:1
Column: DB-5MS UI 30 x 0.250 x 0.50
Carrier: Helium 1.5mL/min
Oven Temp: 35°C hold 5min, 10°C/min to 150,
20°C/min to 300°C, hold 5 min (29 min run time)
GCMS: Agilent 7890B GC 5977A MS
MS Operation: 33-450, 3 scans/sec

- | | | |
|------------------------------|--------------------------------------|---|
| 1. Acetaldehyde | 21. Pyrazine, methyl- | 41. Pyrazinamide |
| 2. Acetone | 22. Furfural | 42. Pyrazine, 2-ethenyl-5-methyl- |
| 3. Pentane | 23. 1H-Pyrrole, 3-methyl- | 43. Ethanone, 1-(2-pyridinyl)- |
| 4. Dimethyl sulfide | 24. 1H-Pyrrole, 2-methyl- | 44. Benzeneacetaldehyde |
| 5. Acetic acid, methyl ester | 25. 2-Furanmethanol | 45. Ethanone, 1-(1H-pyrrol-2-yl)- |
| 6. Propanal, 2-methyl- | 26. 2-Heptanone | 46. Acetophenone |
| 7. Acetic acid | 27. Heptanal | 47. Pyrazine, 3-ethyl-2,5-dimethyl- |
| 8. 2,3-Butanedione | 28. 2(5H)-Furanone | 48. Pyrazine, 2-ethyl-3,5-dimethyl- |
| 9. 2-Butanone | 29. Butyrolactone | 49. 2,3-Dimethyl-5-ethylpyrazine |
| 10. 1-Propanol, 2-methyl- | 30. Pyrazine, 2,5-dimethyl- | 50. Pyrazine, 2,5-diethyl- |
| 11. Butanal, 3-methyl- | 31. Pyrazine, ethyl- | 51. Nonanal |
| 12. Butanal, 2-methyl- | 32. Pyrazine, 2,3-dimethyl- | 52. Methyl nicotinate |
| 13. 2,3-Pentanedione | 33. 2H-Pyran-2-one, tetrahydro- | 53. 5H-5-Methyl-6,7-dihydrocyclopentapyrazine |
| 14. 1H-Pyrrole, 1-methyl- | 34. 2-Furancarboxaldehyde, 5-methyl- | 54. Pyrazine, 3,5-diethyl-2-methyl- |
| 15. Disulfide, dimethyl | 35. Benzaldehyde | 55. 6-Aminoindoline |
| 16. Pyrrole | 36. Dimethyl trisulfide | 56. Benzofuran, 2,3-dihydro- |
| 17. Pentanal, 2-methyl- | 37. Furan, 2-pentyl- | 57. (-)-Carvone |
| 18. Toluene | 38. Pyrazine, 2-ethyl-6-methyl- | 58. Benzeneacetaldehyde, .alpha.-ethylidene- |
| 19. Octane | 39. Pyrazine, trimethyl- | 59. 2-Methoxy-4-vinylphenol |
| 20. Hexanal | 40. Pyrazine, 2-ethyl-5-methyl- | 60. 2,4-Decadienal |
| | | 61. 2-Pentadecanone |
| | | 62. Pentadecanal- |

Milk Analysis

TIC: 170228_18.D\data.ms

Abundance

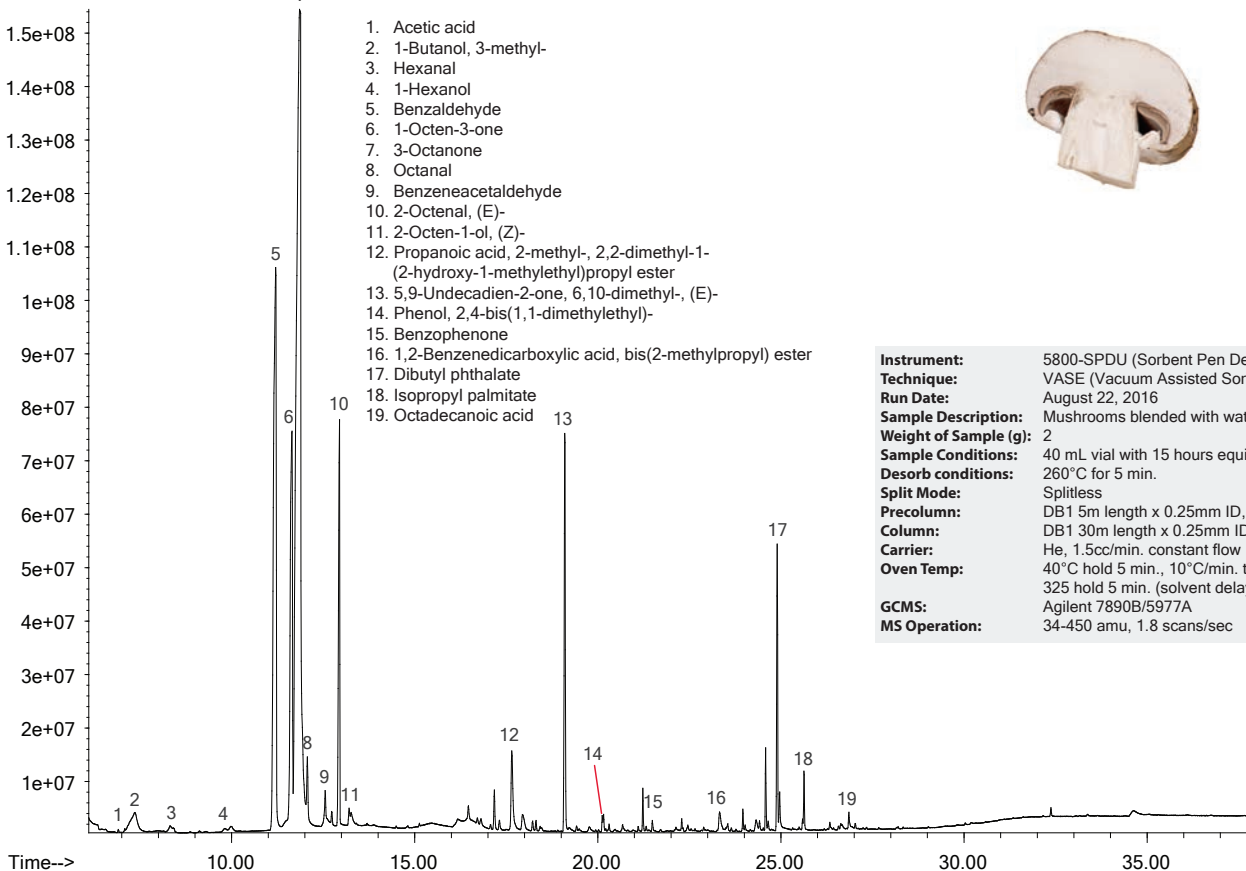


Instrument: 5800-SPDU (Sorbent Pen Desorption Unit)
Technique: VASE (Vacuum Assisted Sorbent Extraction)
Run date: February 28, 2017
Sample description: Whole Milk
Amount of sample: 0.5mL
Sample conditions: 40mL vial with 15 hours equilibration at 25°C
100RPM, preheat for 45 seconds
Desorb conditions: 260°C for 5 min.
Split Mode: Split 6:1
Precolumn: DB1 5m length x 0.25mm ID, 0.25µm film
Column: DB1 30m length x 0.25mm ID, 0.5µm film
Carrier: He, 1.5cc/min. constant flow
Oven Temp: 40°C hold 5 min., 10°C/min. to 325°C,
325 hold 5 min. (solvent delay at 6 min.)
GCMS: Agilent 7890B/5977A
MS Operation: 34-450 amu, 2 scans/sec

Mushroom Analysis

TIC: 161122_02.D\data.ms

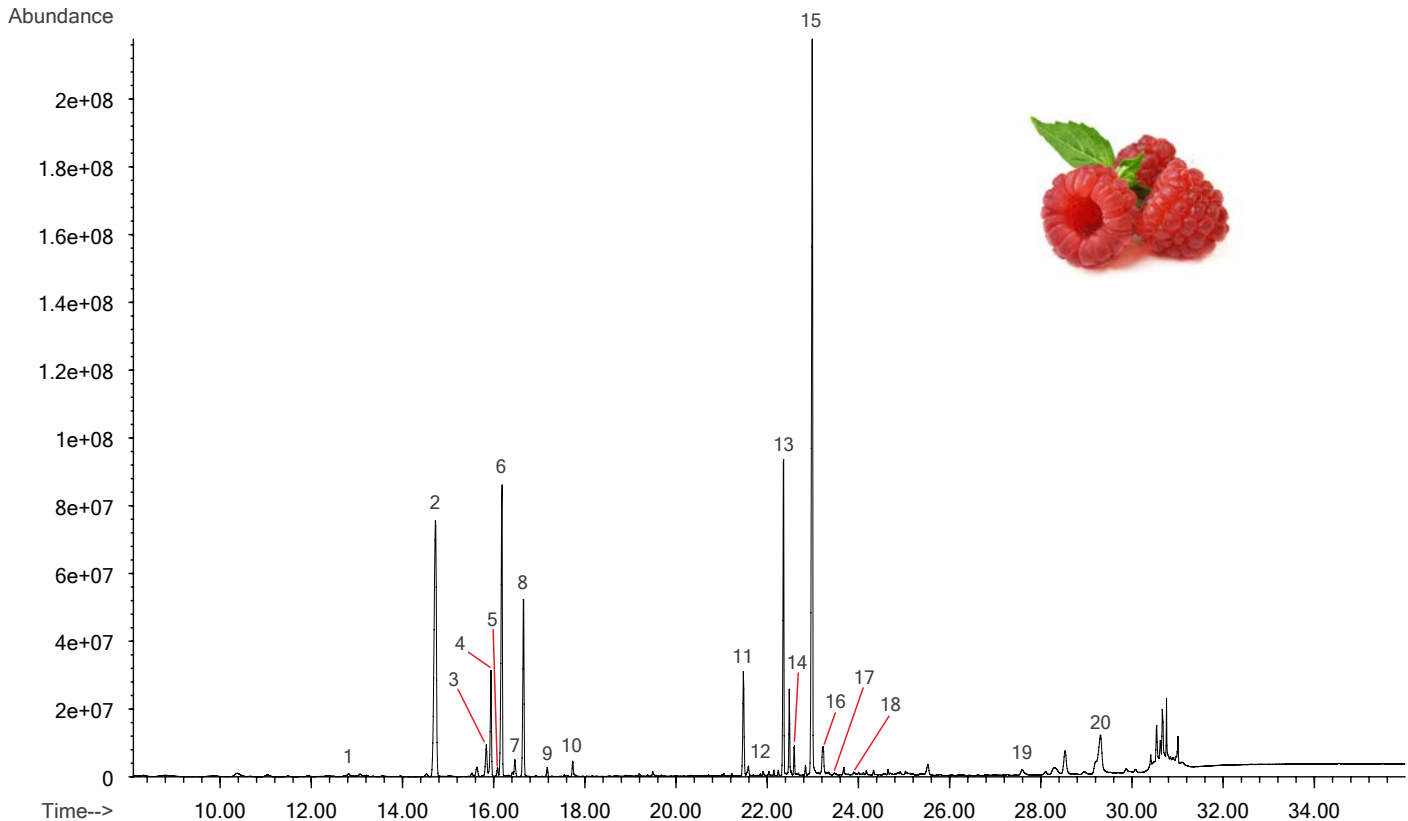
Abundance



Instrument: 5800-SPDU (Sorbent Pen Desorption Unit)
Technique: VASE (Vacuum Assisted Sorbent Extraction)
Run Date: August 22, 2016
Sample Description: Mushrooms blended with water (1:2 ratio)
Weight of Sample (g): 2
Sample Conditions: 40 mL vial with 15 hours equilibration at 25°C
260°C for 5 min.
Desorb conditions: Splitless
Split Mode: Splitless
Precolumn: DB1 5m length x 0.25mm ID, 0.25µm film
Column: DB1 30m length x 0.25mm ID, 0.5µm film
Carrier: He, 1.5cc/min. constant flow
Oven Temp: 40°C hold 5 min., 10°C/min. to 325°C,
325 hold 5 min. (solvent delay at 6 min.)
GCMS: Agilent 7890B/5977A
MS Operation: 34-450 amu, 1.8 scans/sec

Raspberry Analysis

TIC: 16080201.D\data.ms



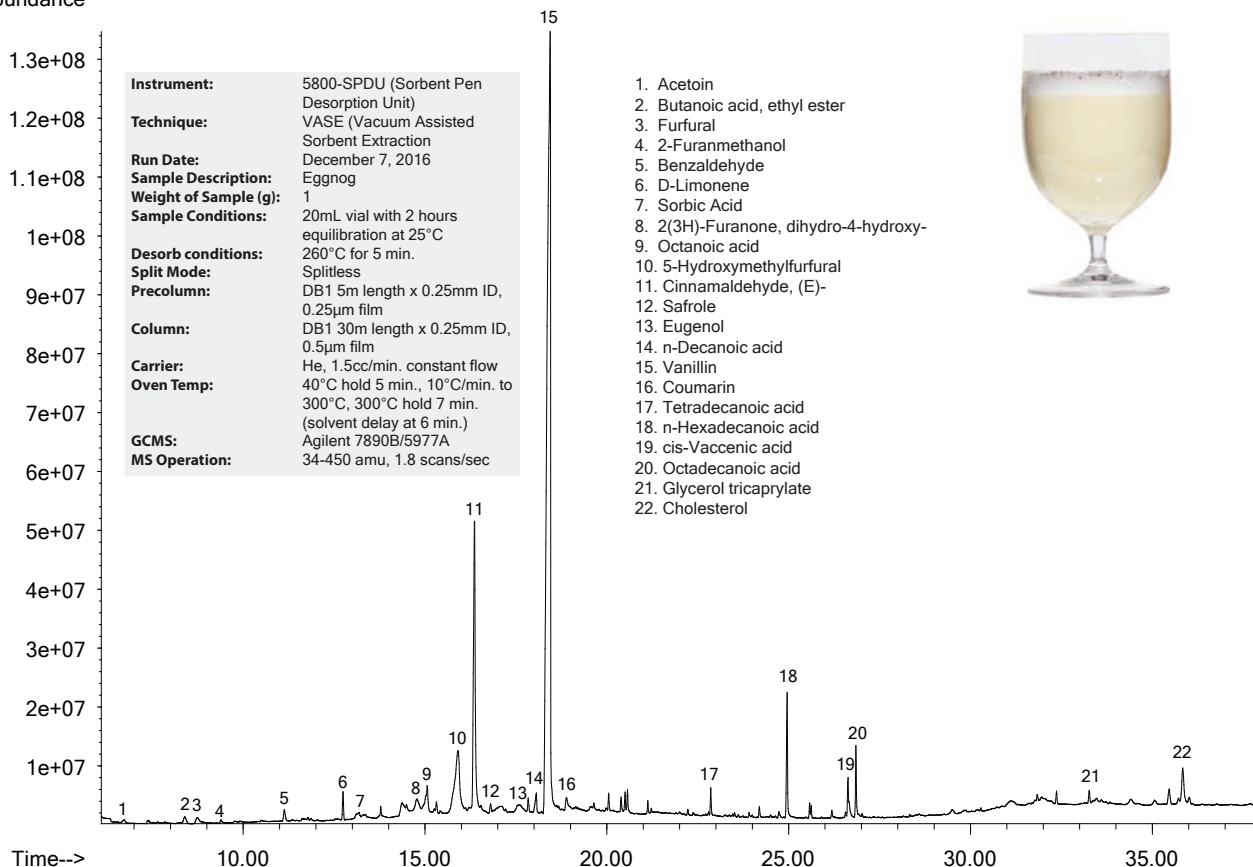
Instrument: 5800-SPDU (Sorbent Pen Desorption Unit)
Technique: VASE (Vacuum Assisted Sorbent Extraction)
Run Date: August 2, 2016
Sample Description: Fresh Raspberries
Weight of Sample (g): 6.9049
Sample Conditions: vac(30sec) + 15hr equilibration
Desorb conditions: 260°C for 5 min.
Split Mode: Splitless
Precolumn: DB1 5m length x 0.25mm ID, 0.25µm film
Column: DB1 30m length x 0.25mm ID, 0.5µm film
Carrier: He, 1.5cc/min. constant flow
Oven Temp: 40°C hold 5min., 6°C/min. to 95°C,
10°C/min. to 140°C, 15°C/min. to
325 hold 5min.
GCMS: Agilent 7890B/5977A
MS Operation: 34-450 amu, 1.8 scans/sec

1. 2-Heptanone
2. alpha-pinene
3. beta-myrcene
4. 3-hexen-1-ol, acetate (Z)
5. acetic acid, hexyl ester
6. alpha-phellandrene
7. p-cymene
8. beta-Phellandrene
9. gamma-terpinene
10. Cyclohexene, 1-methyl-4(1-methylethylidene)
11. 3-buten-2-one, 4-(2,6,6-trimethyl-1-cyclohexen-1-yl)
12. 1,1,5-trimethyl-1,2-hydronaphthalene
13. alpha-lonone
14. 1,3,6,10-Dodecatetraene, 3,7,11-trimethyl (Z,E)
15. trans-beta-lonone
16. alpha-farnesene
17. Naphthalene, 1,2,3,5,6,7,8,8a-octahydro-1,8a-dimethyl-7-(1-methylethenyl)-, [1R-(1.alpha.,7.beta.,8a.alpha.)]-
18. Dodecanoic acid
19. Pentadecanoic acid
20. n-Hexadecanoic acid

Eggnog Analysis

TIC: 161207_08.D\data.ms

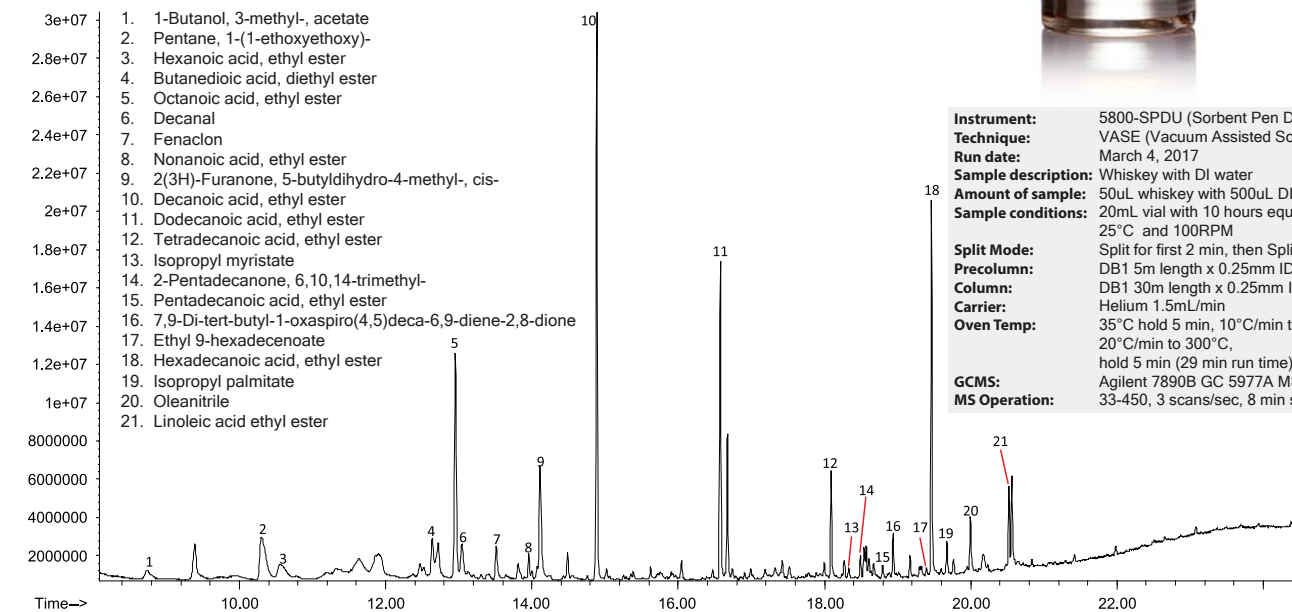
Abundance



Whiskey Analysis

TIC: 170304_04.D\data.ms

Abundance

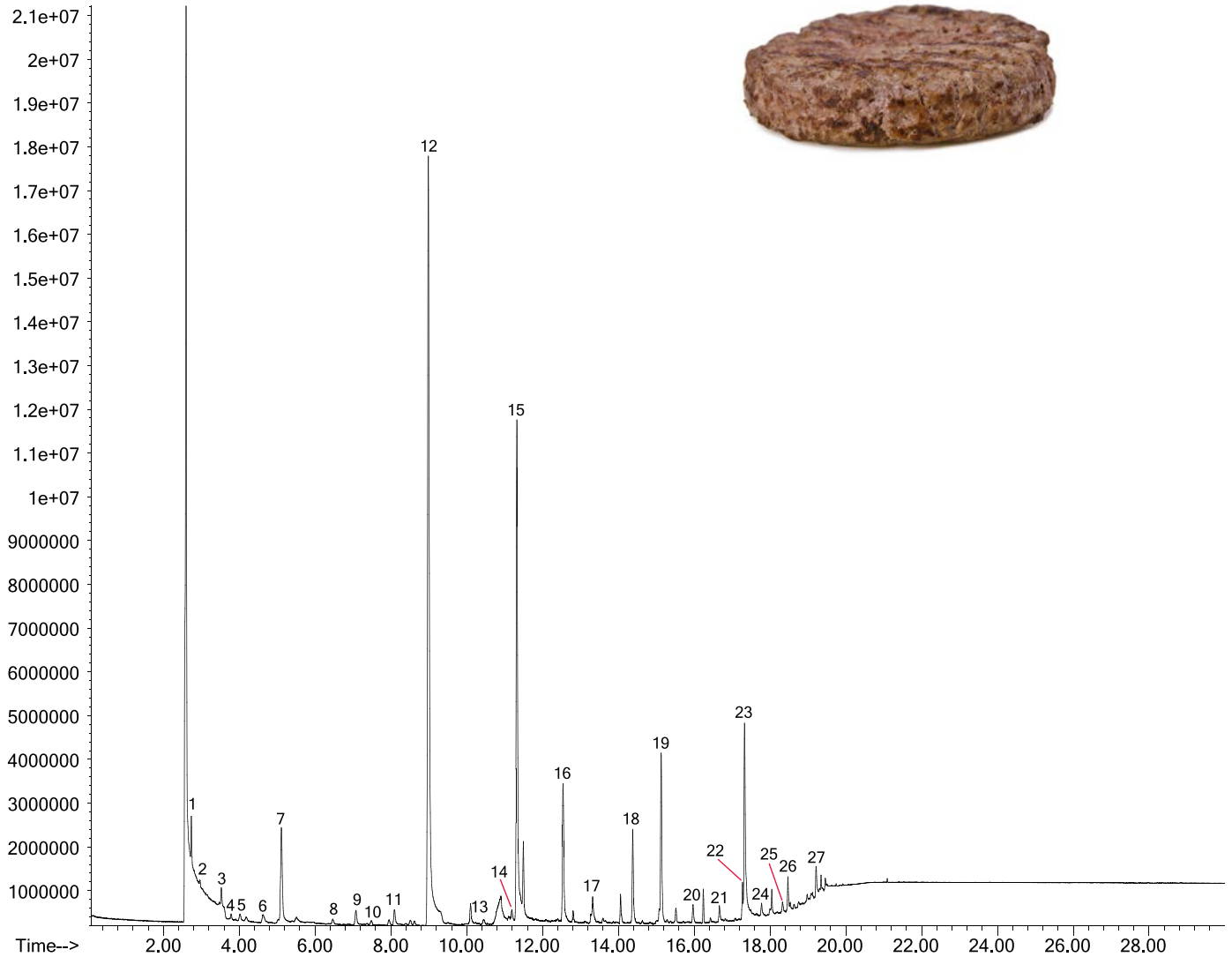


Instrument: 5800-SPDU (Sorbent Pen Desorption Unit)
Technique: VASE (Vacuum Assisted Sorbent Extraction)
Run date: March 4, 2017
Sample description: Whiskey with DI water
Amount of sample: 50uL whiskey with 500uL DI water
Sample conditions: 20mL vial with 10 hours equilibration at 25°C and 100RPM
Split Mode: Split for first 2 min, then Splitless
Precolumn: DB1 5m length x 0.25mm ID, 0.25um film
Column: DB1 30m length x 0.25mm ID, 0.5um film
Carrier: Helium 1.5mL/min
Oven Temp: 35°C hold 5 min, 10°C/min to 150°C, 20°C/min to 300°C, hold 5 min (29 min run time)
GCMS: Agilent 7890B GC 5977A MS
MS Operation: 33-450, 3 scans/sec, 8 min solvent delay

Cooked Ground Beef Analysis

TIC: 1171121_14.D\data.ms

Abundance

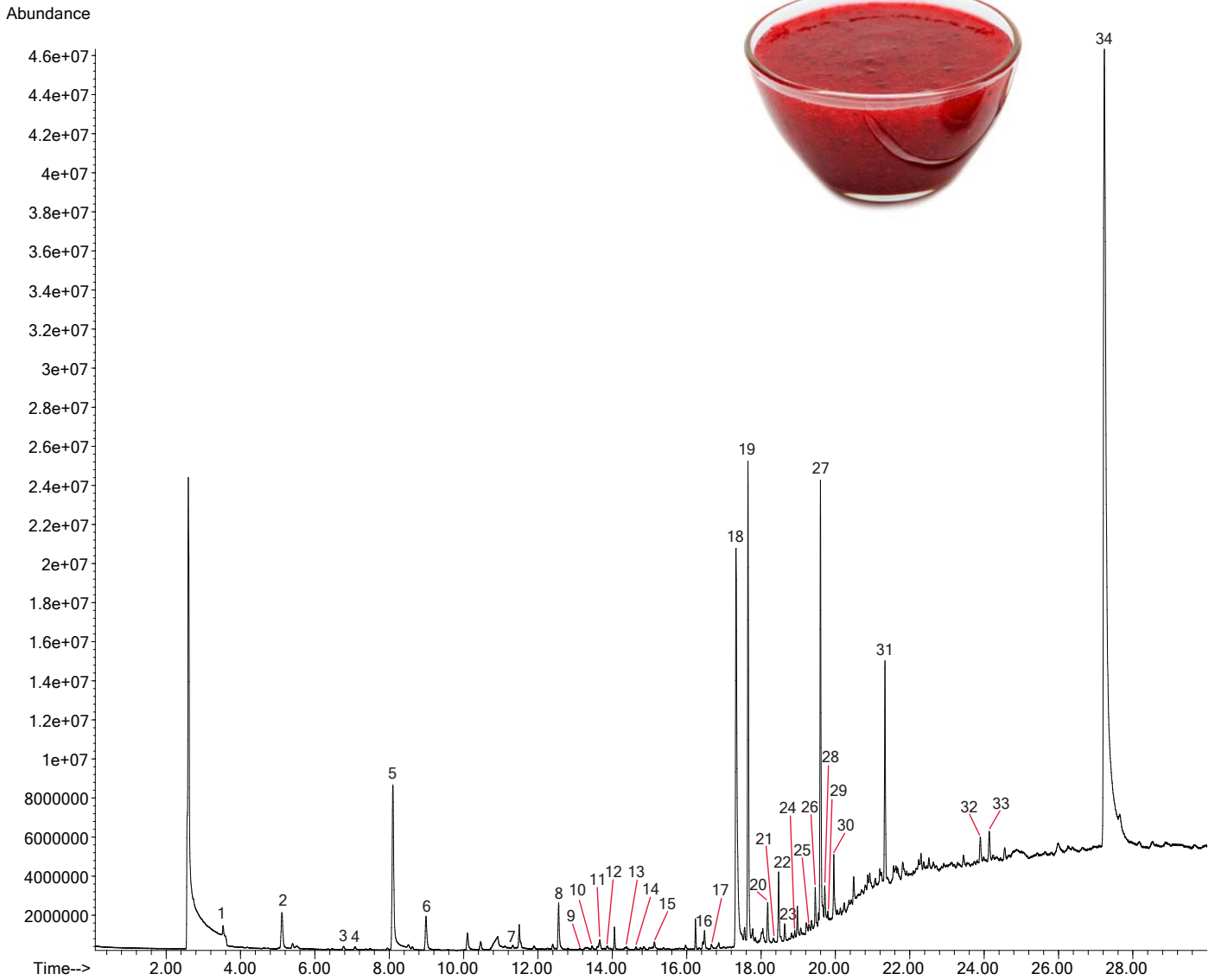


Instrument: 5800-SPDU (Sorbent Pen Desorption Unit)
Technique: VASE (Vacuum Assisted Sorbent Extraction)
Run date: November 28, 2017
Sample description: Cooked ground beef 80% lean
Weight of sample (g): 0.50
Sample conditions: 5hrs@25C 300 rpm + cold tray
Split Mode: Agilent 30:1 split
Preheat: 2min at 260°C
Precolumn: 0.6m Silonite Coated Tubing
Column: DB-5MS UI 30m x 0.250mm ID x 0.50um film thickness
Carrier: Helium 1.5mL/min
Oven Temp: 35°C hold 5min, 10°C/min to 150, 20°C/min to 230°C, hold 9.5min (30min run time)
GCMS: Agilent 7890B GC 5977A MS
MS Operation: Full Scan, 33-450, 3 scans/sec

- | | |
|-------------------------|-------------------------|
| 1. Pentane | 15. Hexanal |
| 2. n-Hexane | 16. p-Xylene |
| 3. Acetaldehyde | 17. Heptanal |
| 4. Carbon disulfide | 18. 1-Pentanol |
| 5. Dimethyl sulfide | 19. Acetoin |
| 6. Propanal | 20. 1-Hexanol |
| 7. Acetone | 21. Nonanal |
| 8. Butanal | 22. 1-Octen-3-ol |
| 9. 2-Butanone | 23. Acetic acid |
| 10. Butanal, 3-methyl- | 24. 1-Hexanol, 2-ethyl- |
| 11. Ethanol | 25. Propanoic acid |
| 12. Toluene | 26. Benzaldehyde |
| 13. 2,3-Butanedione | 27. Butanoic Acid |
| 14. Disulfide, dimethyl | |

Canned Cranberry Sauce Analysis

TIC: 161207_08.D\data.ms

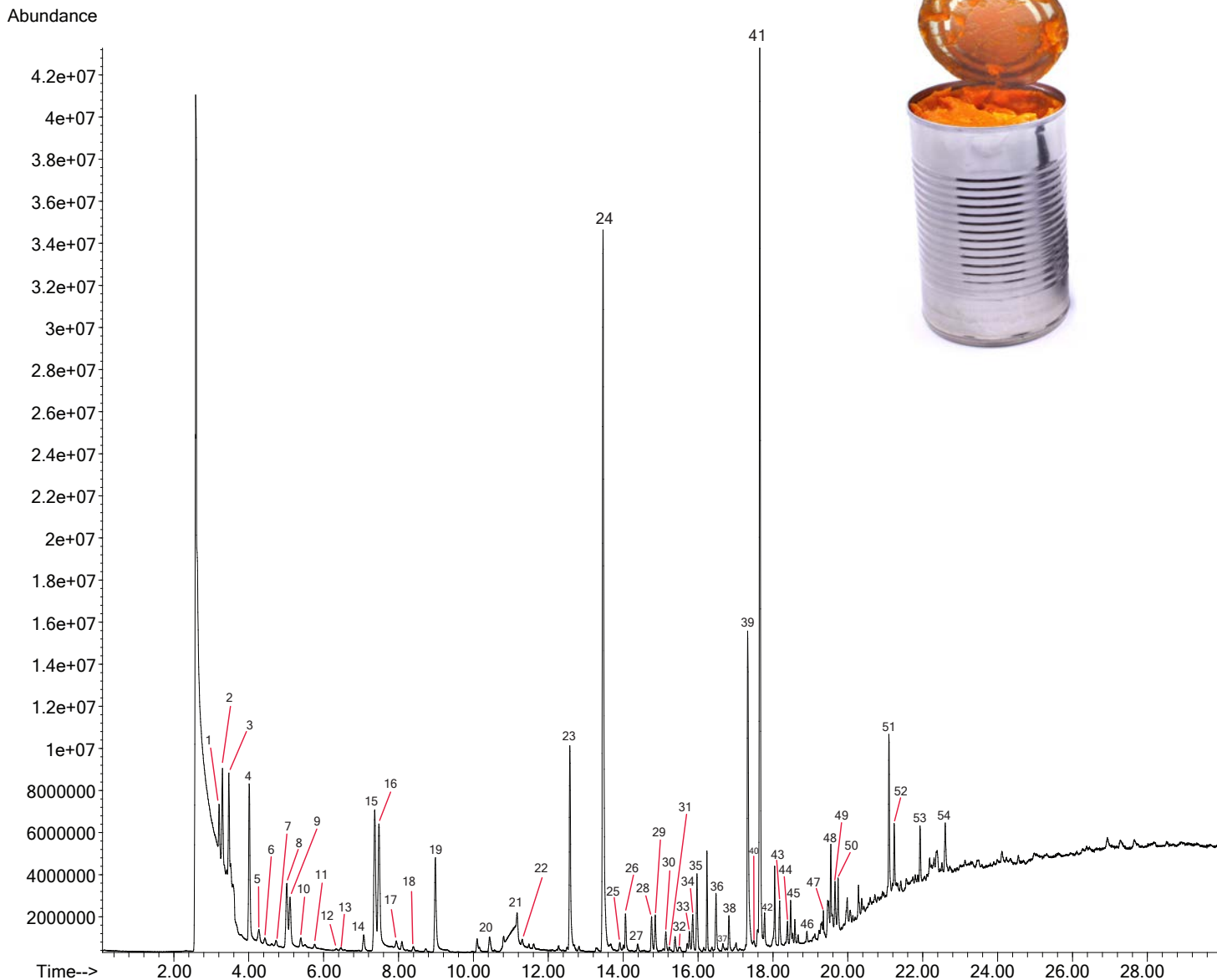


Instrument: 5800-SPDU (Sorbent Pen Desorption Unit)
Technique: VASE (Vacuum Assisted Sorbent Extraction)
Run date: November 28, 2017
Sample description: Canned whole cranberry sauce
Weight of sample (g): 0.49
Sample conditions: 15hrs@25C 300 rpm + cold tray
Split Mode: 30:1 split
Preheat: 2min at 260°C
Precolumn: 0.6m Silonite Coated Tubing
Column: DB-5MS UI 30m x 0.250mm ID x 0.50um film thickness
Carrier: Helium 1.5mL/min
Oven Temp: 35°C hold 5min, 10°C/min to 150, 20°C/min to 230°C, hold 9.5min (30min run time)
GCMS: Agilent 7890B GC 5977A MS
MS Operation: Full Scan, 33-450, 3 scans/scan

- | | |
|--------------------------|---------------------------------------|
| 1. Acetaldehyde | 18. Acetic acid |
| 2. Acetone | 19. Furfural |
| 3. Ethyl Acetate | 20. Ethanone, 1-(2-furanyl)- |
| 4. 2-Butanone | 21. Propanoic acid |
| 5. Ethanol | 22. Benzaldehyde |
| 6. 2,3-Butanedione | 23. Propanoic acid, 2-methyl- |
| 7. Hexanal | 24. 2-Furancarboxaldehyde, 5-methyl- |
| 8. 1-Butanol | 25. Butanoic acid |
| 9. Pyridine | 26. Octadecane |
| 10. D-Limonene | 27. Butanoic acid, 2-methyl- |
| 11. 1-Butanol, 3-methyl- | 28. Heptadecane |
| 12. Eucalyptol | 29. Benzoic acid, ethyl ester |
| 13. 1-Pentanol | 30. .alpha.-Terpineol |
| 14. Styrene | 31. Benzyl alcohol |
| 15. Acetoin | 32. Benzoic acid, 2-ethylhexyl ester |
| 16. 3-Hexen-1-ol, (Z)- | 33. i-Propyl 14-methyl-pentadecanoate |
| 17. Nonanal | 34. Benzoic acid |

Canned Pumpkin Analysis

TIC: 171121_06.D\data.ms

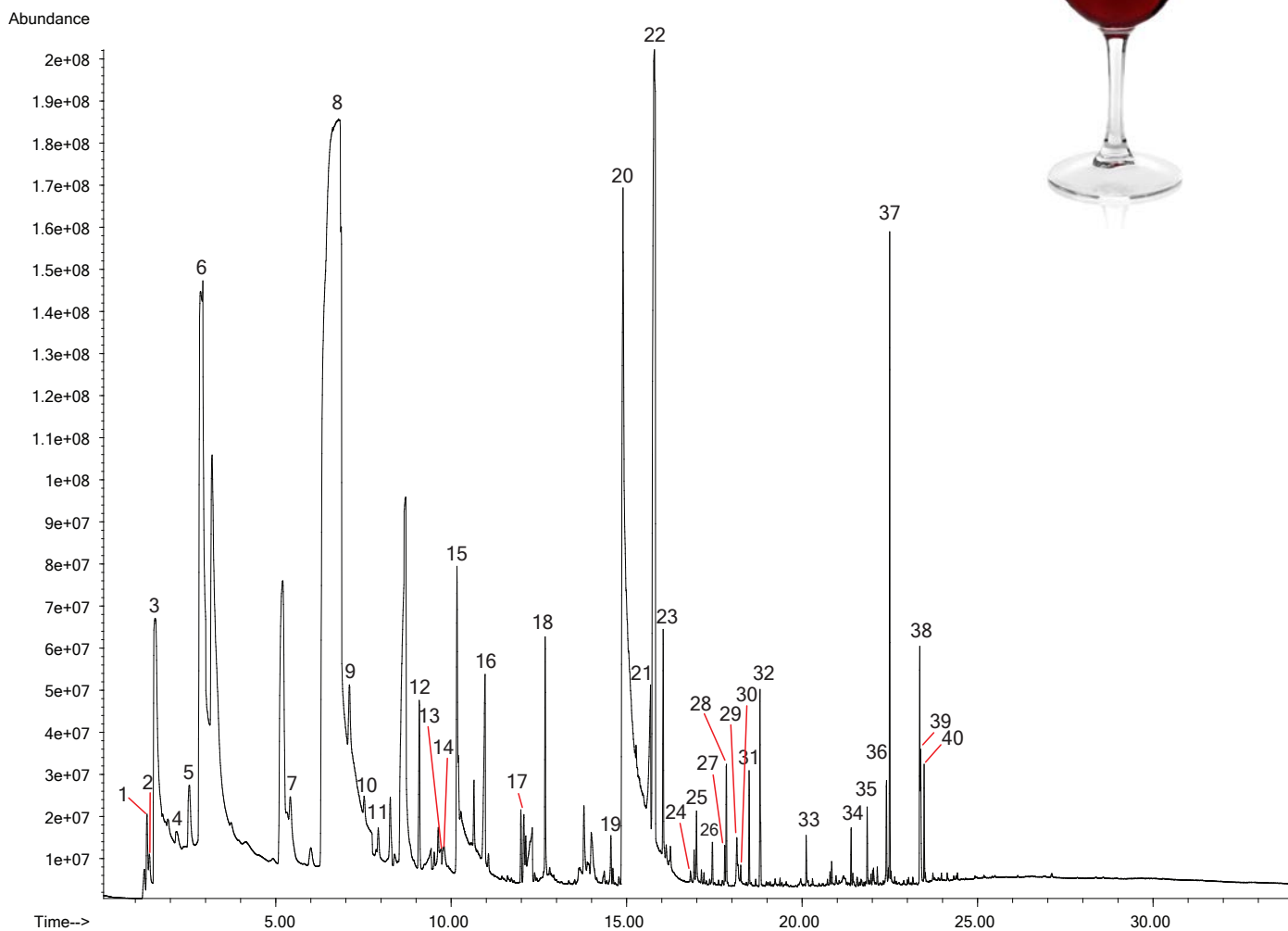


Instrument: 5800-SPDU (Sorbent Pen Desorption Unit)
Technique: VASE (Vacuum Assisted Sorbent Extraction)
Run date: November 28, 2017
Sample description: Canned Pumpkin
Weight of sample (g): 0.88
Sample conditions: 15hrs@25C 300 rpm + cold tray
Split Mode: 30:1 split
Preheat: 2min at 260°C
Precolumn: 0.6m Silonite Coated Tubing
Column: DB-5MS UI 30m x 0.250mm ID x 0.50um film thickness
Carrier: Helium 1.5mL/min
Oven Temp: 35°C hold 5min, 10°C/min to 150, 20°C/min to 230°C, hold 9.5min (30min run time)
GCMS: Agilent 7890B GC 5977A MS
MS Operation: Full Scan, 33-450, 3 scans/sec

- | | |
|--------------------------------------|---|
| 1. Acetaldehyde | 28. Heptadecane |
| 2. Acetone | 29. Benzoic acid, ethyl ester |
| 3. Ethyl Acetate | 30. alpha-Terpineol |
| 4. 2-Butanone | 31. Benzyl alcohol |
| 5. Ethanol | 32. Benzoic acid, 2-ethylhexyl ester |
| 6. 2,3-Butanedione | 33. i-Propyl 14-methyl-pentadecanoate |
| 7. Hexanal | 34. Benzoic acid |
| 8. 1-Butanol | 35. 1-Hexanol |
| 9. Pyridine | 36. 3-Hexen-1-ol, (Z)- |
| 10. D-Limonene | 37. Nonanal |
| 11. 1-Butanol, 3-methyl- | 38. Ethanol, 2-butoxy- |
| 12. Eucalyptol | 39. Acetic acid |
| 13. 1-Pentanol | 40. Methional |
| 14. Styrene | 41. Furfural |
| 15. Acetoin | 42. 1-Hexanol, 2-ethyl- |
| 16. 3-Hexen-1-ol, (Z)- | 43. Ethanone, 1-(2-furanyl)- |
| 17. Nonanal | 44. 1,6-Octadien-3-ol, 3,7-dimethyl- |
| 18. Acetic acid | 45. Benzaldehyde |
| 19. Furfural | 46. 2-Furancarboxaldehyde, 5-methyl- |
| 20. Ethanone, 1-(2-furanyl)- | 47. 1H-Pyrazole-4-carboxaldehyde, 1,5-dimethyl- |
| 21. Propanoic acid | 48. 2-Furanmethanol |
| 22. Benzaldehyde | 49. 1H-Indene, 1,1,3-trimethyl- |
| 23. Propanoic acid, 2-methyl- | 50. 3-Nonen-1-ol, (Z)- |
| 24. 2-Furancarboxaldehyde, 5-methyl- | 51. 5,9-Undecadien-2-one, 6,10-dimethyl-, (E)- |
| 25. Butanoic acid | 52. alpha-Ionone |
| 26. Octadecane | 53. trans-beta-Ionone |
| 27. Butanoic acid, 2-methyl- | 54. 1H-Pyrole-2-carboxaldehyde |

Wine Analysis

TIC: 170601_03.D\data.ms

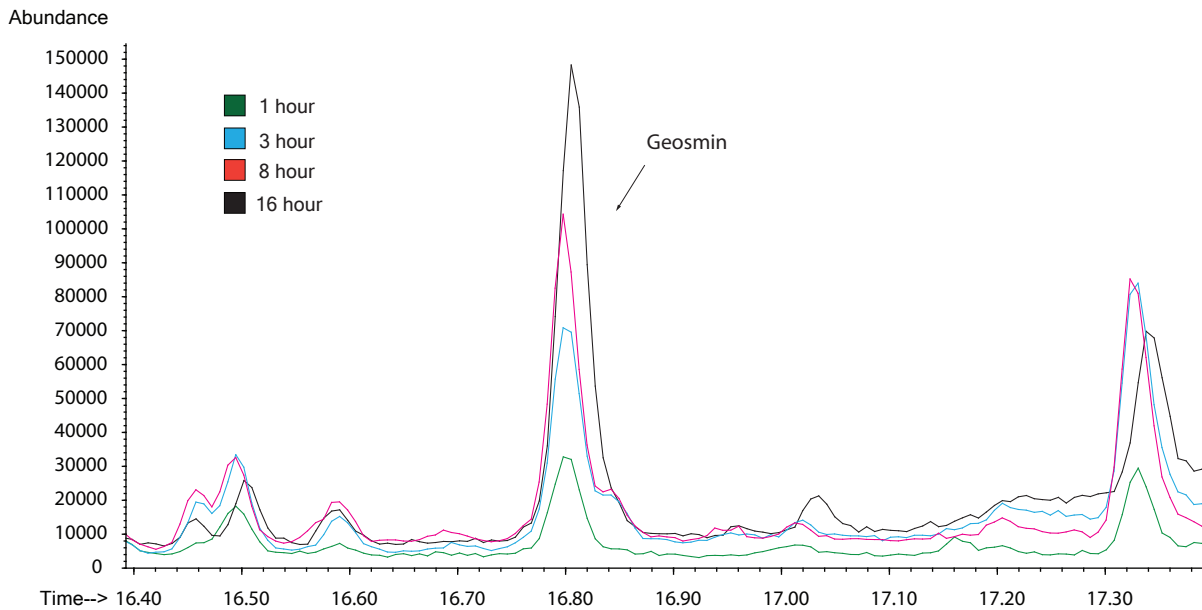
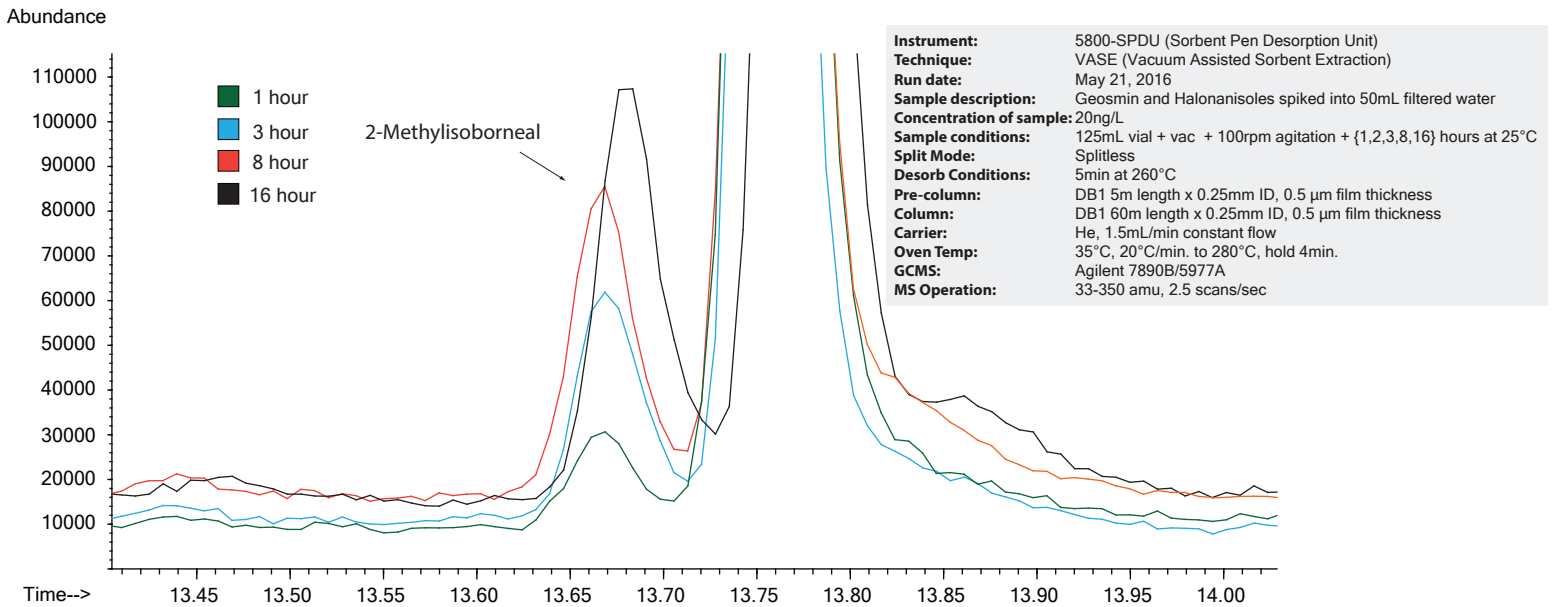


Instrument: 5800-SPDU (Sorbent Pen Desorption Unit)
Technique: VASE (Vacuum Assisted Sorbent Extraction)
Run date: June 1, 2017
Sample description: Red Wine
Amount of sample: 0.5mL
Sample conditions: 40mL vial with 15 hours equilibration at 25°C, preheat to 260°C for 1.5min
Split Mode: Agilent Splitter, 10:1
Precolumn: 0.6m Silonite Coated filmless column
Column: DB-5MS UI 30 x 0.250 x 0.50
Carrier: Helium 1.5mL/min
Oven Temp: 35°C hold 5min, 10°C/min to 150, 20°C/min to 300°C, hold 5min (29min run time)
GCMS: Agilent 7890B GC 5977A MS
MS Operation: 33-450, 3 scans/sec

1. Sulfur dioxide
2. Acetaldehyde
3. Ethanol
4. 1-Propanol
5. 2,3-Butanedione
6. Ethyl Acetate
7. Propanoic acid, ethyl ester
8. 1-Butanol, 3-methyl-
9. Propanoic acid, 2-methyl-, ethyl ester
10. Isobutyl acetate
11. Butanoic acid, ethyl ester
12. Furfural
13. Butanoic acid, 2-methyl-, ethyl ester
14. Butanoic acid, 3-methyl-, ethyl ester
15. 1-Butanol, 3-methyl-, acetate
16. Butyrolactone
17. 2-Furancarboxaldehyde, 5-methyl-
18. Hexanoic acid, ethyl ester
19. Butanedioic acid, ethyl methyl ester
20. Phenylethyl Alcohol
21. Octanoic acid
22. Butanedioic acid, diethyl ester
23. Octanoic acid, ethyl ester
24. Benzeneacetic acid, ethyl ester
25. Acetic acid, 2-phenylethyl ester
26. 2(3H)-Furanone, 5-butylidihydro-4-methyl-, cis-
27. Succinic acid, butyl ethyl ester
28. 2(3H)-Furanone, 5-butylidihydro-4-methyl-
29. n-Decanoic acid
30. 2(3H)-Furanone, dihydro-5-pentyl-
31. Decanoic acid, ethyl ester
32. Butanedioic acid, ethyl 3-methylbutyl ester
33. Dodecanoic acid, ethyl ester
34. Tetradecanoic acid, ethyl ester
35. 1,2-Benzenedicarboxylic acid, bis(2-methylpropyl) ester
36. Ethyl 9-hexadecenoate
37. Hexadecanoic acid, ethyl ester
38. Linoleic acid ethyl ester
39. Ethyl Oleate
40. Octadecanoic acid, ethyl ester

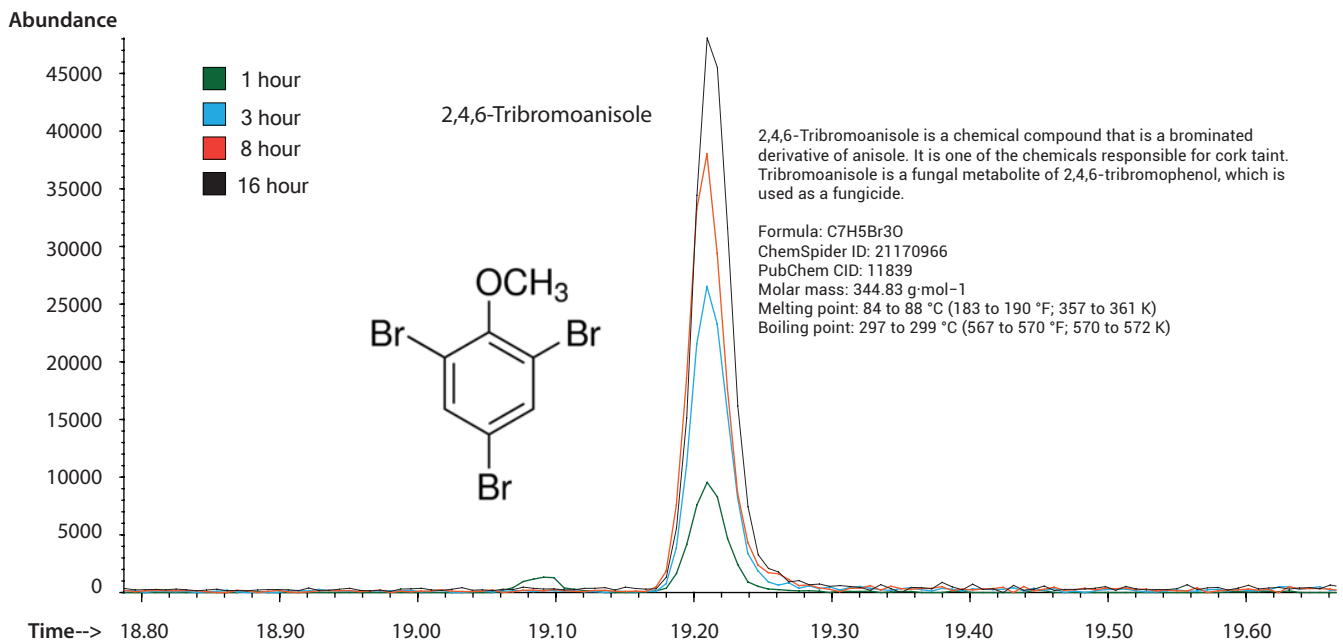
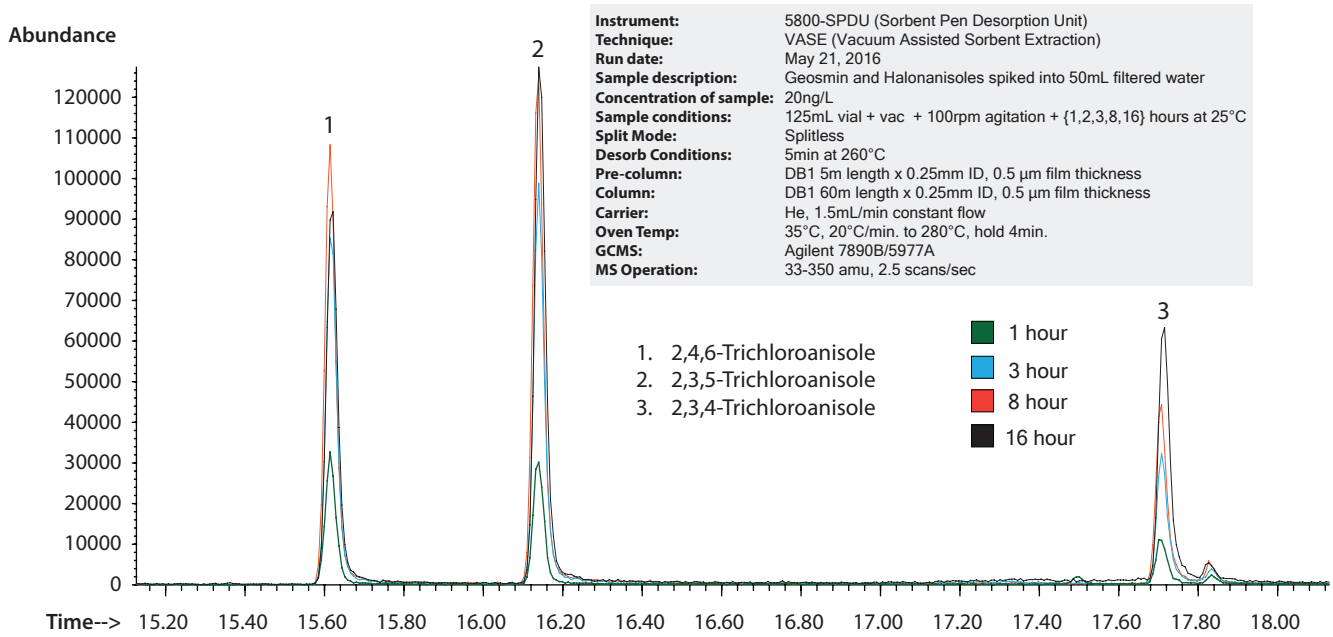
Sorbent Pen™ Vacuum Extraction of Odors Kinetics Study Comparing Recoveries of a 20 Ppt Standard in Water After 1, 3, 8, 16 Hour Extraction Times

- Extractions performed without salting to prevent adsorbent damage via aerosol transport
- Temp = 25°C. Sorbent Pens™ heated to 30°C to prevent water condensation
- An overnight extraction appears to bring the Pens to near equilibrium with the sample



Figures 1,2 (above) – Relative responses for target compounds extracted from 20ng/L standards in 50cc filtered water at 25°C, no salt added, 100 rpm agitation, 1/30th atm vacuum, for 1,3,8, and 16 hours. A final extraction time of 20 hours was selected for this method with an extraction efficiency between 60-80%.

Sorbent Pen™ Kinetic Study



Figures 3,4 (above) – Relative responses for target compounds extracted from 20ng/L standards in 50cc filtered water at 25°C, no salt added, 100 rpm agitation, 1/30th atm vacuum, for 1,3,8, and 16 hours.



Sorbent Pens™ - A Revolutionary Extraction Technology That Is Quantitative By Design.

Learn more about us:



entechinst.com



facebook.com/entechinst



twitter.com/entechinst



linkedin.com/company/entech-instruments-inc

Entech Instruments
2207 Agate Court
Simi Valley, CA 93065
Phone: 805-527-5939

Sorbent Pens™ Chromatograms – 190228 - 3.0