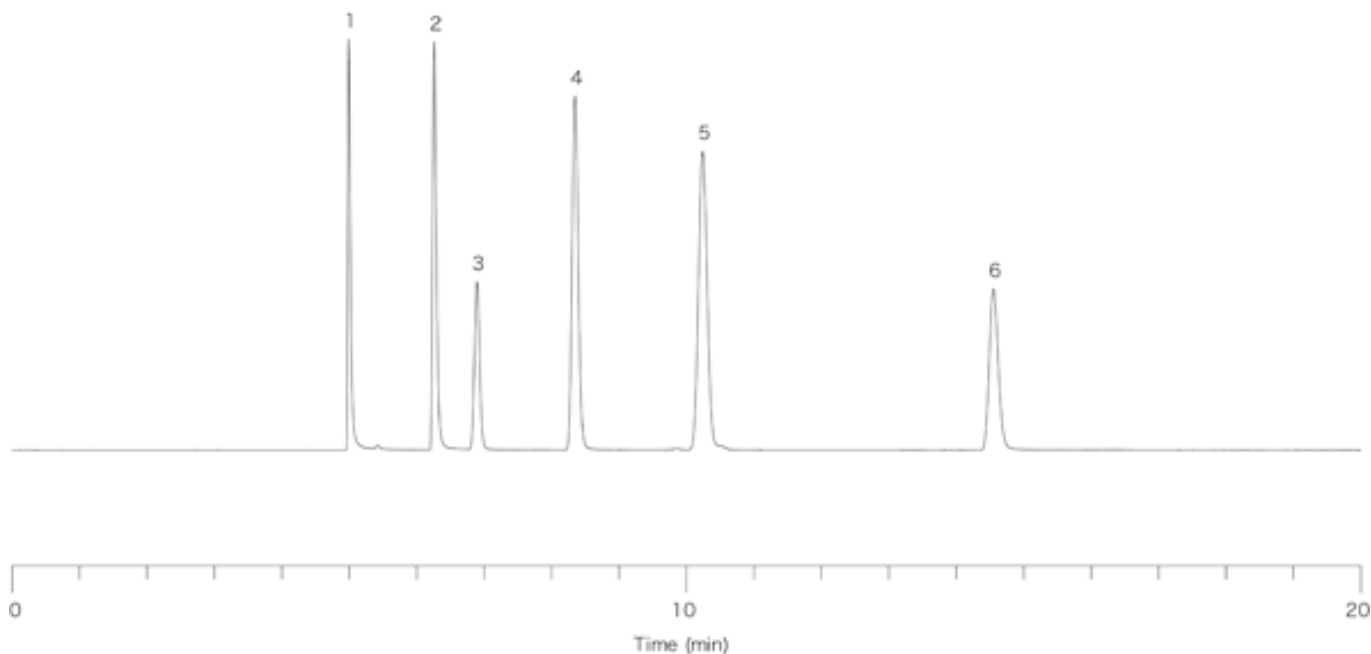


# InertSearch™ for GC

InertCap® Applications

## Amines

Data No. GA068-0000



System : GC/FID  
Column : InertCap for Amines  
0.32mmI.D. × 60m  
Column Temp. : 60°C  
Carrier Gas : He 150kPa  
Injection : Split 1 : 50  
Detection : FID  
Sample : Amines

Solutes : 1. Monomethylamine (MMA)  
2. Dimethylamine (DMA)  
3. Trimethylamine (TMA)  
4. iso-Propylamine  
5. n-Propylamine  
6. Diethylamine