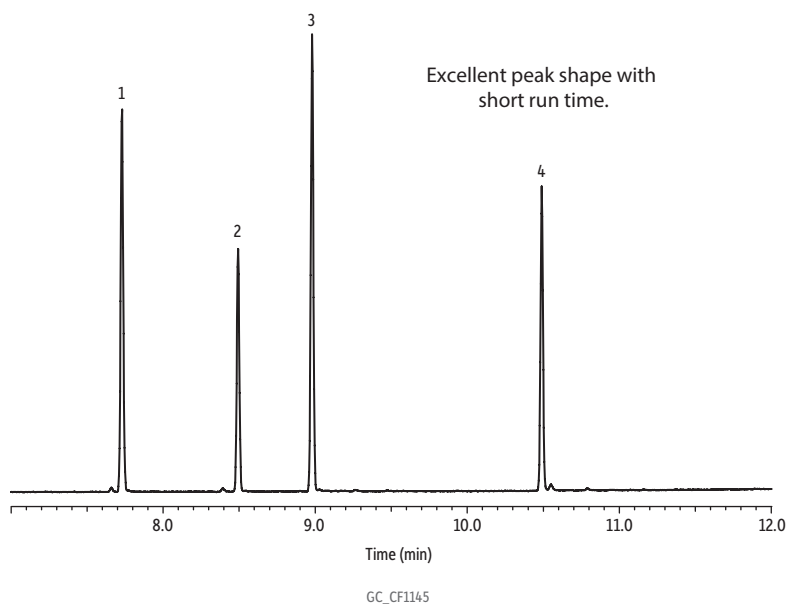


Derivatized Cannabinoids (5 µg/mL) on Rxi-5Sil MS



Peaks

1. Cannabidiol
2. delta 9 THC
3. Cannabinol
4. THC-COOH; THCA

Column	Rxi-5Sil MS, 30 m, 0.25 mm ID, 0.25 µm (cat.# 13623)
Sample	
Diluent:	Ethyl acetate
Conc.:	5 µg/mL TMS derivatives
Injection	
Inj. Vol.:	1 µL splitless (hold 1 min)
Liner:	3.5 mm taper splitless w/wool (cat.# 22286-200.1)
Inj. Temp.:	250 °C
Purge Flow:	21.4 mL/min
Oven	
Oven Temp.:	150 °C to 330 °C at 15 °C/min (hold 3 min)
Carrier Gas	He, constant linear velocity
Linear Velocity:	40 cm/sec, 13.8 psi, 95.1 kPa @ 150 °C
Detector	MS
Mode:	Scan
Transfer Line Temp.:	280 °C
Analyzer Type:	Quadrupole
Source Temp.:	200 °C
Electron Energy:	70 eV
Solvent Delay Time:	4 min
Tune Type:	PFTBA
Ionization Mode:	El
Scan Range:	200-500 amu
Scan Rate:	5 scans/sec
Instrument	Shimadzu 2010 GC & QP2010+ MS